



EDITOR & CREATOR
of MID-CENTURY *ICONS*

FIN
ISH
ES



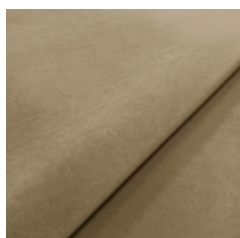
Finishes

FABRICS - 11 collections = 112 colors

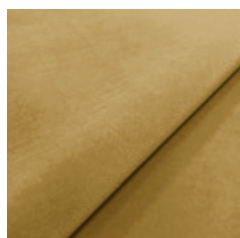
VELVET Collection - 13 colors



Creme



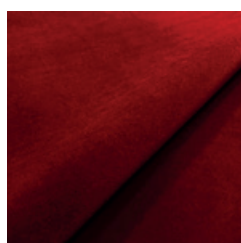
Sand



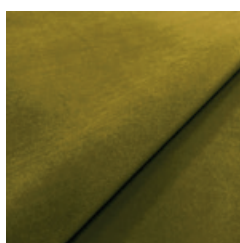
Mustard



Sierra



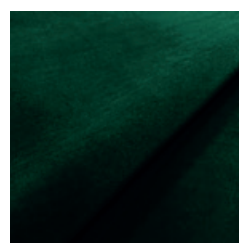
Red Brick



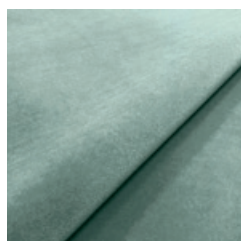
Olive



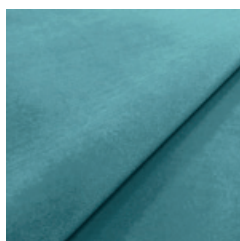
Turtle



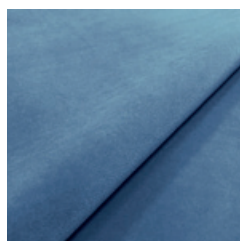
Bottle Green



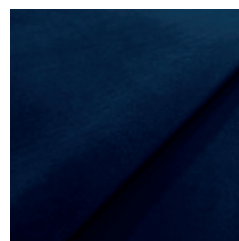
Mint



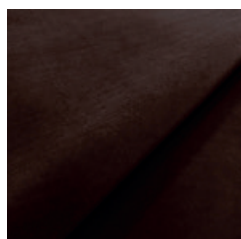
Turquoise



Sky Blue



Indigo



Chocolate

Story behind:

The VELVET collection is synonymous with refinement and softness. Velvet has delighted since its arrival in Europe, providing a royal feel. This highly tactile fabric, available in a soft color palette, fits a broad range of interiors, adding a touch of sophistication to any home. The fabric's special stain resistant coating makes it easy to clean.

Colors shades may slightly vary from dye-lot to dye-lot.

Fabric type: Velvet

Composition: 100% PES

Martindale abrasion: 100'000 cycles (cat. A)

Stain resistant: yes

Flame resistance: British BS 5852

Source 0 (Cigarette)

Wyzenbeek: 200,000 (cat. A)

Finishes

SHINE VELVET Collection - 13 colors



Creme



Taupe



Mustard



Sierra



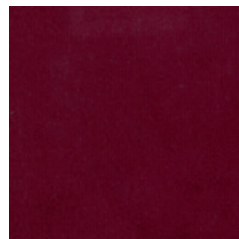
Olive



Emerald



Mauve



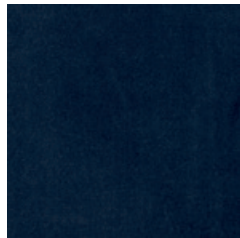
Bordeaux



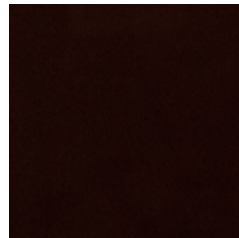
Light Blue



Blue



Indigo



Chocolate



Black

Story behind:

The SHINE VELVET collection is synonymous with softness and chic. Velvet has delighted since its arrival in Europe, providing a royal feel. Shine Velvet is highly tactile fabric, available in a soft color palette. It's very shiny, thanks to it beautifully harmonizes with light, changing the shade depending on the time of day.

Colors shades may slightly vary from dye-lot to dye-lot.

Fabric type: French Velvet

Composition: 100% PES

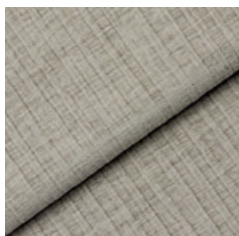
Martindale abrasion: 115'000 cycles (cat. A)

Stain resistant: yes

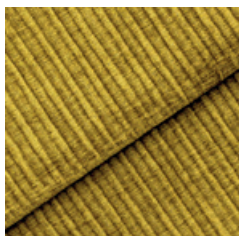
Flame resistance: BS EN 1021-1 Ignition Source 0 (Cigarette), BS EN 1021-2 Ignition Source 1 (Match)

Finishes

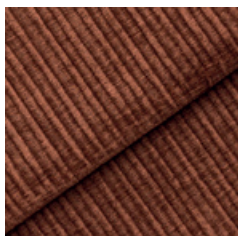
Wave Velvet Collection - 7 colors



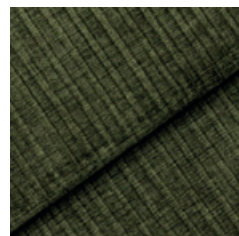
Creme



Mustard



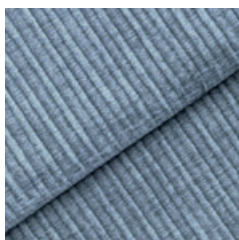
Sierra



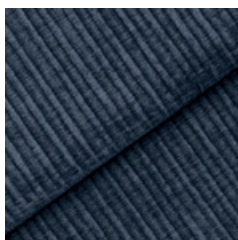
Olive



Light Blue



Jeans



Denim

Story behind:

Pleasant to the touch chenille fabric with the effect of characteristic corduroy. This multifunctional high quality fabric will work well both as a furniture upholstery and as an accessory in the form of cushions. It complements fabrics with a distinctive weave and velvets. Technologies of easy cleaning and hindered absorption of spills will guarantee you comfort of use, clean and attractive furniture for years. The Oeko Tex certificate assures us that the fabric is allergen-free and completely safe.

Fabric type: Velvet

Composition: 47% PES, 45% PA, 8% VI

Martindale abrasion: 35'000 cycles (cat. A)

Stain resistant: yes

Flame resistance: Cigarette Test

Finishes

CORD Collection - 9 colors



Creme



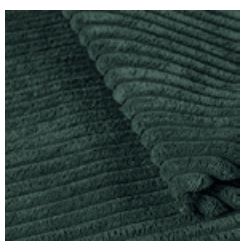
Taupe



Mustard



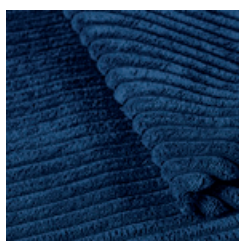
Grass



Bottle Green



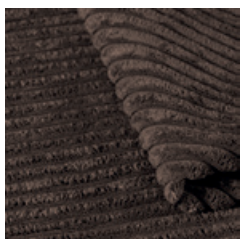
Mint



Indigo



Cappuccino



Cacao

Story behind:

CORD fabric is very soft and pleasant to the touch, and at the same time an extremely strong and durable velor fabric with an interesting, albeit classic texture. Exquisite as a cover of the whole piece of furniture, a single element or as a material for sublime and stylish accessories.

Fabric type: Velvet

Composition: 88% PES, 12 % PA

Martindale abrasion: 100'000 cycles (cat. A)

Colors shades may slightly vary from dye-lot to dye-lot.

Finishes

BOUCLE Collection - 17 colors



Snow



Creme



Camel



Beige



Mustard



Ginger



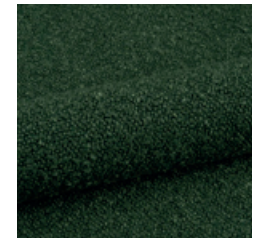
Sierra



Powder Pink



Olive



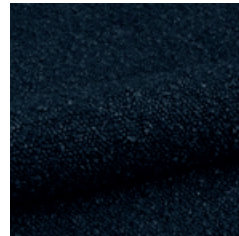
Bottle Green



Blue



Denim



Indigo



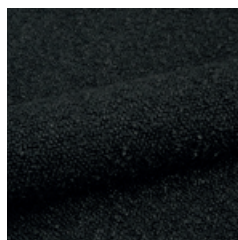
Chocolate



Mouse Grey



Graphite



Black

Story behind:

BOUCLE fabric is a material woven from yarns with an irregular structure, with knotty lugs that can create a cozy atmosphere. In this irregularity lies all the charm of boucle fabric - its surface is soft, warm and pleasant to the touch. It is coated with molecules and a hydrophobic coating that protects fabric from dirt and absorption of liquids. It also meets high quality standards Oeko-Tex Standard 100 certificate.

Colors shades may slightly vary from dye-lot to dye-lot.

Fabric type: Loop

Composition: 93% PES, 6% ACR, 1% COT

Martindale abrasion: > 100'000 cycles (cat. A)

Stain resistant: yes

Flame resistance: Cigarette Test PN-EN

1021-1:2014-12

Finishes

COCO Collection - 13 colors



Snow



Creme



Sand



Beige



Taupe



Mustard



Olive



Bottle Green



Light Blue



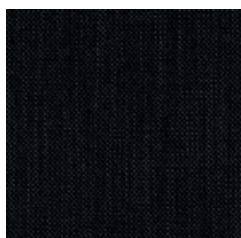
Jeans



Indigo



Chocolate



Black

Story behind:

Fabrics from the COCO collection are typical Scandinavian thick weave. The 366 Concept furniture in beiges and greys from this collection will be a complete match for both minimalistic, modern and sublime interiors.

Colors shades may slightly vary from dye-lot to dye-lot.

Fabric type: Woven

Composition: 84% PES, 16% AC

Martindale abrasion: 30'000 cycles (cat. A)

Flame resistance: BS EN 1021-1 Ignition Source 0 (Cigarette), BS EN 1021-2 Ignition Source 1 (Match)

Finishes

MARBLE Collection - 8 colors



White



Beige



Mustard



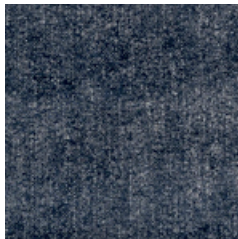
Orange



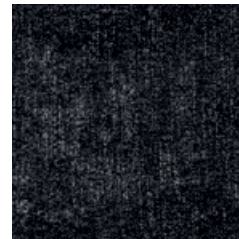
Light Blue



Bottle Green



Indigo



Black

Story behind:

Fabrics from the MARBLE collection are characterized by a unique structure, reminiscent of natural marble. There are no two identical pieces of this fabric. Thanks to it your furniture will be absolutely unique.

Fabric type: Chenille

Composition: 87% PES, 13% Rayon

Martindale abrasion: 45'000 cycles (cat. B)

Flame resistance: BS EN 1021-1 Ignition Source 0 (Cigarette), BS EN 1021-2 Ignition Source 1 (Match)

Colors shades may slightly vary from dye-lot to dye-lot.

Finishes

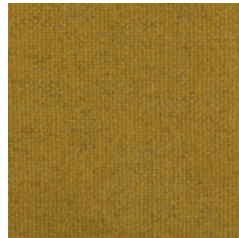
WOOL Collection - 12 colors



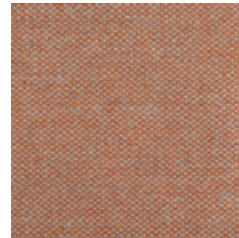
Sand



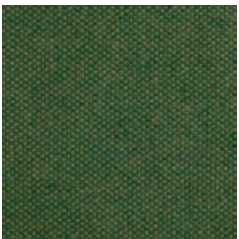
Light Mustard



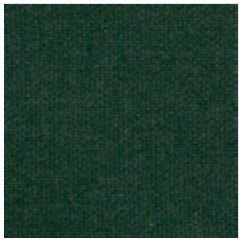
Mustard



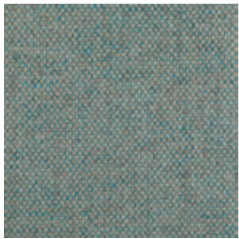
Orange Beige



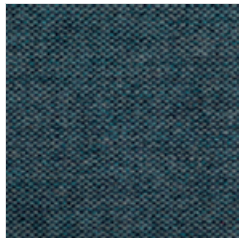
Olive



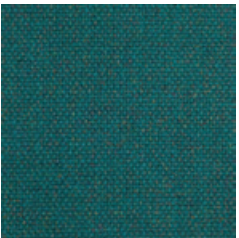
Bottle Green



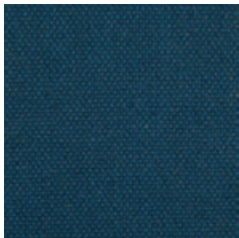
White Blue



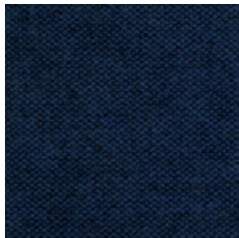
Grey Blue



Turquoise



Jeans



Blue



Grey Black

Story behind:

The WOOL collection uses new-generation fabrics made from natural materials. Weaving long, smooth wild flax fibre between the wool creates a stunning two-tone color inspired by precious stones. The addition of flax makes wool fabrics less flammable, which means that they are exquisite for commercial interiors, such as hotels or restaurants.

Fabric type: Woven

Composition: 75% VIRGIN WOOL, 25% FLAX

Martindale abrasion: > 50'000 cycles (cat. A)

Flame resistance: BS 7176 Low Hazard, NFPA 260 + UFAC Class 1

Colors shades may slightly vary from dye-lot to dye-lot.

Finishes

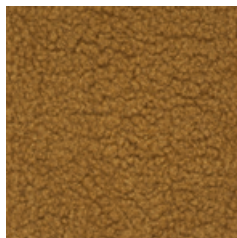
TEDDY Collection - 4 colors



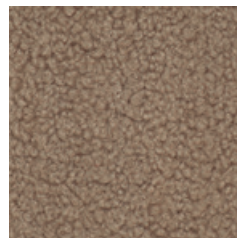
Creme



Beige



Mustard



Cappuccino

Story behind:

The fabrics from one of the most fashionable TEDDY collection are characterized by delicate structure that resembles soft plush.

What distinguishes them is knotted weave, high grammage and resistance to abrasion. Teddy looks prominent against the background of walls made of natural wood, raw brick, concrete or stone. Exceptionally soft texture and toned-down color range are exquisite complement for rooms in boho style, as well as Scandinavian, where it adds a bit of warmth, coziness and lightness.

Fabric type: Loop

Composition: 100% PES

Martindale abrasion: > 50 000 cycles (cat. A)

Flame resistance: BS EN 1021-1 Ignition Source 0 (Cigarette) , BS EN 1021-2 Ignition Source 1 (Match)

Colors shades may slightly vary from dye-lot to dye-lot.

Finishes

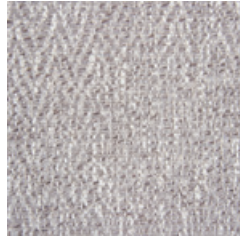
BRAID Collection - 10 colors



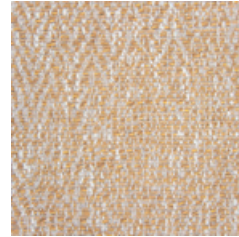
Crema



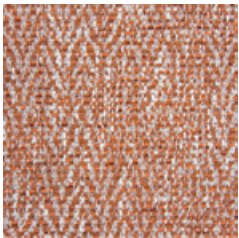
Beige



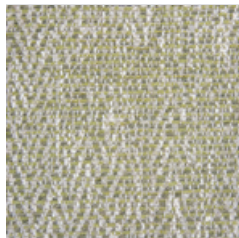
Light Brown



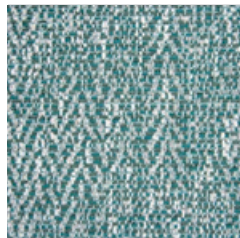
Mustard



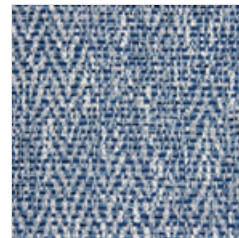
Sierra



Olive



Emerald



Indigo



Brown



Black

Story behind:

The BRAID fabric has been appreciated by the greatest designers and interior architects. The colors from the collection emphasize the thick woven structure of the material that is pleasant and soft to the touch. Each color has an admixture of white which makes the fabric even lighter and warmer. Its thick braid weave makes furniture very cozy, and combined with the natural color of the wood, it will become an idyllic addition in your homes. The special finish of the fabrics protects them from the rapid seepage of liquids, or even effectively blocks the infiltration of dirt into the fabric.

Fabric type: Braid

Composition: 60% COT, 14% VI, 9% AC, 7% PES, 6% LI, 4% Other

Martindale abrasion: 20'000 cycles (cat. A)

Fire resistance: BS 5852 Part I – Cigarette Test, EN 1021-1 – Cigarette Test, CA Tech. Bull. 117:2013 / NFPA 260

Colors shades may slightly vary from dye-lot to dye-lot.

Finishes

NATURAL LEATHER Collection - 6 colors



Creme



Light Blue



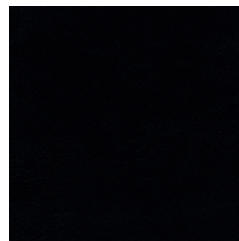
Cognac



Bottle Green



Mocca



Black

Story behind:

NATURAL LEATHER available in our collection is one of the best naturally and sustainably tanned leathers with rhubarb. Chromium-free leather tanning is a new, innovative way to obtain this noble raw material in an environmentally friendly manner. Natural leather can get dirty from fats, liquids or jeans.

Fabric type: Natural Leather

Composition: 100% Natural Leather dyed with rhubarb

Certificate: Member of the International Association of Natural Textiles (IVN e.V.)

Colors shades may slightly vary from dye-lot to dye-lot.

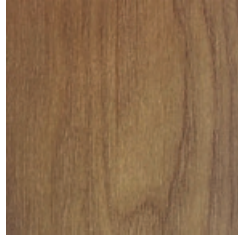
Finishes

WOOD - 2 types

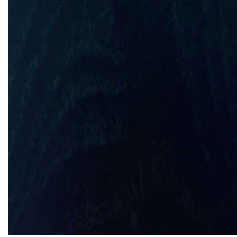
Ash Wood - 4 colors



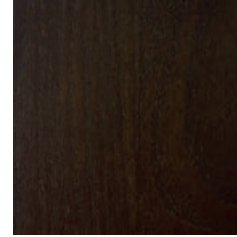
Natural 02



Caramel 03



Black 04



Brown 05

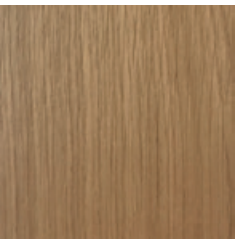
Story behind:

Ash is a noble wood with special properties. It is used especially when elasticity and strength are required. Ash is also valued due to its structure that is characterized by a marbled pattern. It can also be recognized by its clearly visible annual rings that indicate the highest quality of the wood. For this reason, it is often used in the production of furniture.

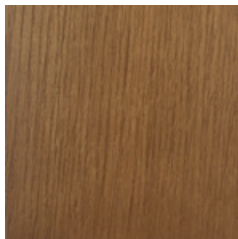
Selected to series:

- Fox
- 200-190
- 200-125 VAR

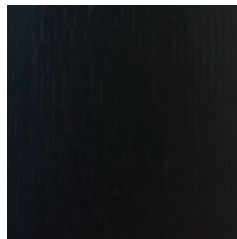
Oak Wood - 4 colors



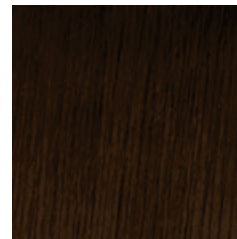
Natural 02



Caramel 03



Black 04



Brown 05

Story behind:

Oak wood is one of the highest quality woods with beautiful decorative surface. The grain has a uniform structure, in which the annual rings are visible. Therefore the oak wood is preferred in the construction of noble solid wood furniture. It is prized in furniture making because of its durability, workability and natural beauty.

Selected to series:

- 366
- Bunny
- Dining tables
- Desks
- Sideboards
- Stefan

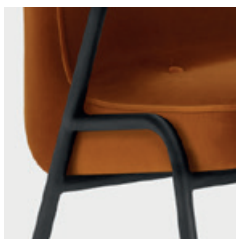
Finishes

METAL - 2 types

Story behind:

366 Concept selects the most refined metals, steel and brass in matt finish. The metals have a galvanic finish and are coated with a thin layer of a more noble metal. This makes 366 Concept furniture even more captivating.

Black Matt



366 Series



Fox Series

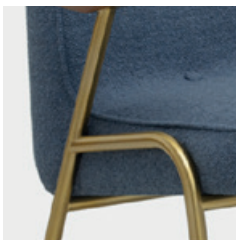
Story behind:

Our Black Matt finish looks stunning on the 366 Metal and Fox Metal Series.

They allow you to maintain a natural, classic look, thanks to which they will enrich any interior.

The Black Matt finish fits splendidly with our wooden armrests, which is why this color has been the most attractive finish in the metal series for many years.

Brass Matt



366 Series

Story behind:

Our Brass Matt is a great finish for people who want to feel a subtle refinement effect.

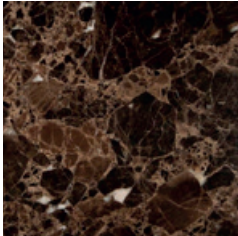
The Brass Matt finish is a subdued and unique color that splendidly harmonizes with the cream upholstery. In combination with wooden armrests, it creates an extraordinary piece.

It is both sophisticated and subtle finish for a unique interior. Selected only to 366 Metal Series.

Finishes

MARBLE - 7 colors

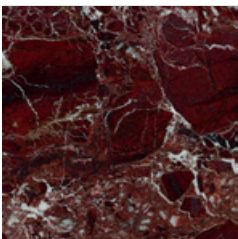
Brown - Emperador Dark



Story behind:

Emperador Dark is highly valued by designers and interior architects due to its distinctive pattern with rich veining and strong dark color. A brown, cream-beige natural stone clearly captures the unique southern warmth. It goes very well with natural wood.

Bordeaux - Rosso Levanto



Story behind:

A striking, rich deep maroon stone with contrasting white veins that adds a natural texture. Rosso Levanto marble's uniqueness is a bold addition to any design that enriches your interior with the appearance of unmitigated refinement. This marble effortlessly blends red, brown, maroon, black and white tones into a natural masterpiece that creates an sophisticated aura that engulfs any space.

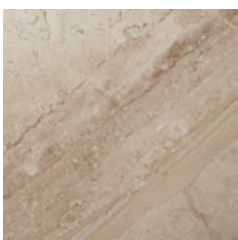
White & Grey - Breccia Vagli



Story behind:

Breccia Vagli is a classic marble with plenty of character. The depth of color is apparent in the polished finish. It resembles ice sheets floating in a deep sea that reflects the beauty of nature. Breccia Vagli marble is distinguished by the striking contrast of white and grey. The opulent glamour of this Italian marble has inspired many names in design world.

Creme - Diana Royal

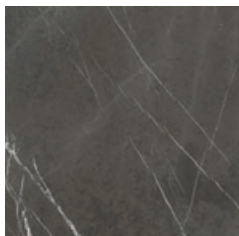


Story behind:

A stunning blend of linen and light grey-cream tones. Diana Royal is a type of light and white coloured marble which uncover your meaning of softness and beauty. Its light beige color makes it easily fit in every architectural context. Also, since its color is really light and bright, it makes any interior look more spacious and gives it a desired calm and a fresh look.

Finishes

Taupe – Pietra Beige



Story behind:

Beautiful, unusual taupe, color with various shades and white-taupe veins. The exclusive, unique Pietra Beige color and contrasting shades of white make it a noble and modern material. Taupe is an exclusive stone that includes tiles of various shades. Bright lines may appear on each table top. This feature is typical of natural stone, especially marbles with rich veins.

White – Bianco Carrara



Story behind:

Bianco Carrara is a beautiful Italian marble with unique veins that fits into any space and harmonizes very well with wooden elements. This Italian marble has a light background – white, grey and fine veins that are unevenly scattered on each top. Bianco Carrara is an exquisite addition to any interior.

Black – Nero Marquina



Story behind:

Nero Marquina – an extraordinary marble straight from Spain. Nero Marquina is a unique, beautiful, classic marble that looks great in a set and also fits splendidly with the Pietra Beige and the Bianco Carrara tables. This marble will enrich any space with their deep and sublime blackness. There are noticeable white veins that add a beauty stone and at the same time are a very characteristic element of this stone.

Contacts

B2C

E hello@366concept.com

M + 48 570 480 190

B2B & ARCHITECTS

E business@366concept.com

M + 48 533 326 366

OFFICE & SHOWROOM

E hello@366concept.com

M + 48 570 480 190

W 366concept.com

A Bagatela 10/5, 00-585 Warsaw, Poland

PRESS

E pr@366concept.com

MARKETING

E marketing@366concept.com

FOUNDERS

Agata Górka

E agata@366concept.com

M + 48 502 251 616

Maciek Cypryk

E maciek@366concept.com

ART DIRECTION

Agata Górka - 366 Concept

PICTURE CREDITS

366 Concept - Furniture Icons

If we have inadvertently used material without acknowledgement, we will correct the omission immediately upon notification.

No part of this catalog may be reproduced without prior written permission from 366 Concept - Furniture Icons.

© 2022, 366 Concept - Furniture Icons. All rights reserved.

Inspire. Create. Deliver.