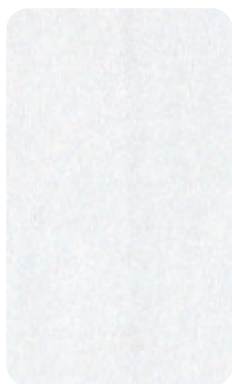


The background of the page is a complex, abstract wireframe structure. It consists of numerous thin, light gray lines that intersect to form a dense, interconnected mesh. The lines are arranged in a way that creates a sense of depth and movement, with some areas appearing more prominent than others. The overall effect is that of a digital or architectural model, possibly representing a surface or a volume in a three-dimensional space. The lines are most concentrated in the lower-left and middle-right areas, with some gaps and thinner sections towards the top and right edges.

**armet**

MATERIALS | 2018



**PP1**  
bianco  
*white*



**PP2**  
grigio perla  
*pearl grey*



**PP3**  
nero  
*black*



**PP4**  
marrone  
*brown*



**PP5**  
antracite  
*anthracite*



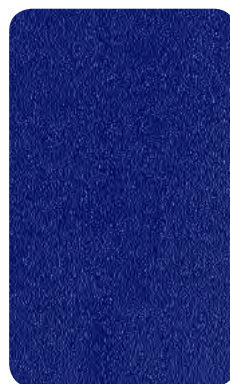
**PP6**  
rosso  
*red*



**PP7**  
arancio  
*orange*



**PP8**  
verde chiaro  
*light green*



**PP9**  
blu  
*blue*



**PP11**  
tortora  
*dove*



**PP12**  
grafite  
*graphite*



**PP13**  
oliva  
*olive*



**PP14**  
lampone  
*raspberry*

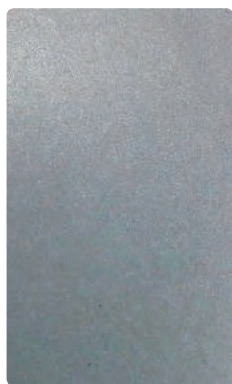


**PP15**  
blu polvere  
*powder blue*





**AL1**  
alluminio gofrato  
*embossed aluminium*



**AL2**  
alluminio satinato  
*satinated aluminium*



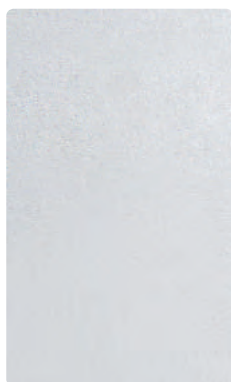
**OT**  
ottone  
*brass*



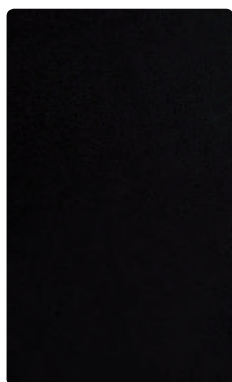
**CU**  
rame  
*copper*



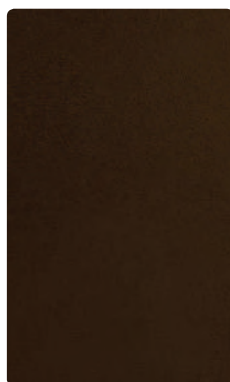
**TI**  
titanio  
*titanium*



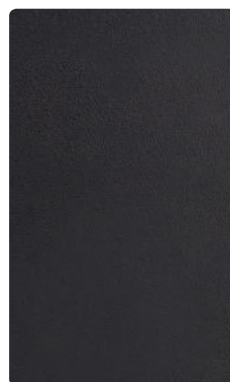
**M1**  
bianco gofrato  
*embossed white*



**M2**  
nero gofrato  
*embossed black*



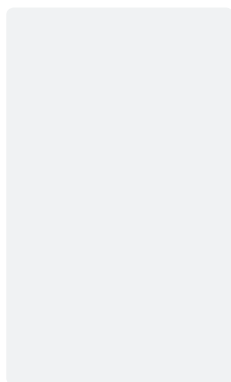
**M3**  
marrone seppia  
gofrato  
*embossed  
sepia brown*



**M4**  
grigio basalto  
gofrato  
*embossed  
basalt grey*



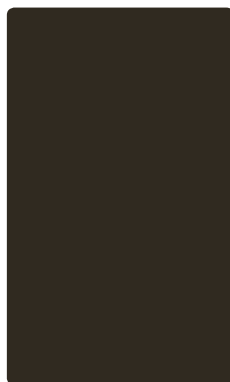
**M5**  
rosso rubino gofrato  
*embossed ruby red*



**M6**  
bianco  
*white*



**M7**  
nero  
*black*



**M8**  
marrone grigiastro  
*grey brown*



**M10**  
rosso fuoco  
*flame red*



**T1**  
faggio naturale  
*natural beechwood*



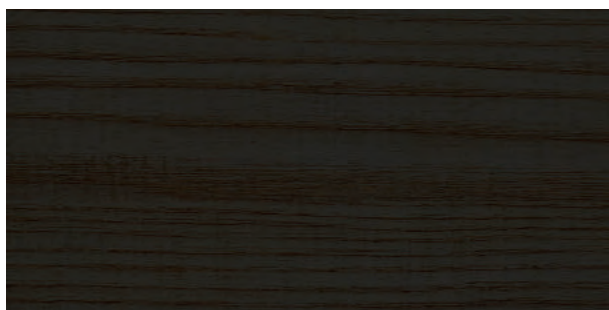
**T2**  
frassino tinto rovere  
*stained-oak ashwood*



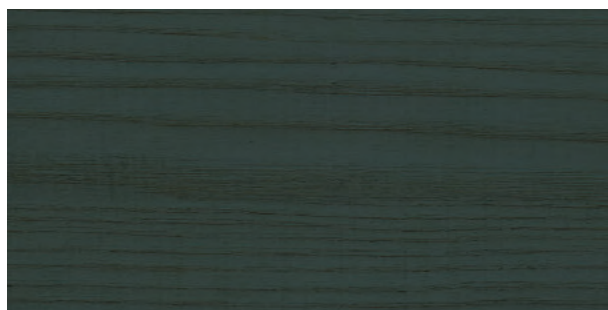
**T3**  
frassino naturale  
*natural ashwood*



**T4**  
frassino anilina bianco  
*white aniline ashwood*



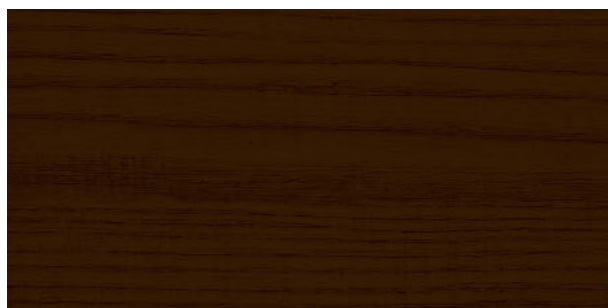
**T5**  
frassino anilina nero  
*black aniline ashwood*



**T6**  
frassino anilina grigio  
*grey aniline ashwood*

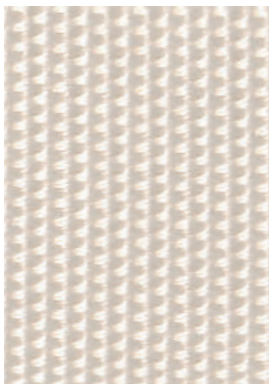


**T7**  
frassino anilina rosso  
*red aniline ashwood*



**T8**  
frassino anilina wengé  
*wenge aniline ashwood*

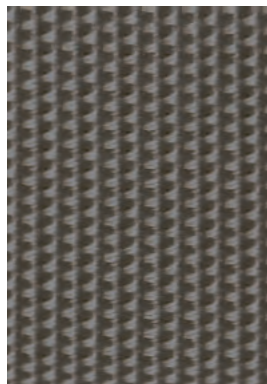




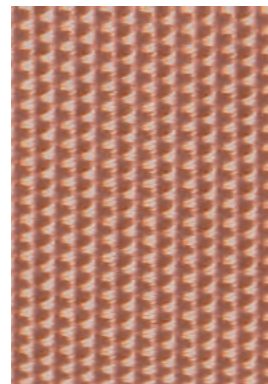
**BLT1**  
bianco  
*white*



**BLT2**  
nero  
*black*



**BLT3**  
argento  
*silver*



**BLT4**  
salmone  
*salmon*

**CORDA PVC**  
*PVC ROPE*



Ø 4 mm



**STR1** trasparente / *transparent*

**STR2** bianco / *white*

**STR3** nero / *black*

**STR4** marrone / *brown*

**STR5** rosso / *red*

**STR6** verde / *green*

**STR7** celeste / *light blue*

**CORDA POLIESTERE**  
*POLYESTER ROPE*



Ø 8 mm



H 8 mm / H 10 mm



**RO1** bianco / *white*

**RO2** nero / *black*

**RO3** argento / *silver*

**RO4** marrone / *brown*

**RO5** canapa / *hemp*

**RO6** beige / *beige*

**RO7** verde militare / *military green*

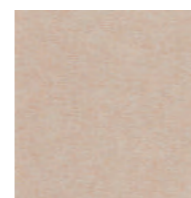


973

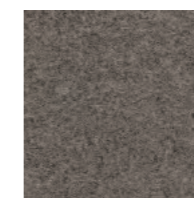
**DIVINA MD**

**Tipologia:** lana  
**Composizione:** 100% lana vergine  
**Larghezza:** 150 cm  
**Peso:** 820 g/mtl  
**Design:** Finn Sködt  
**Pulizia e manutenzione:** contattare il fornitore al sito [www.kvadrat.dk](http://www.kvadrat.dk).

**Type:** wool  
**Composition:** 100% new wool  
**Width:** 150 cm  
**Weight:** 820 g/lm  
**Design:** Finn Sködt  
**Cleaning and maintenance:** contact the supplier through website [www.kvadrat.dk](http://www.kvadrat.dk).



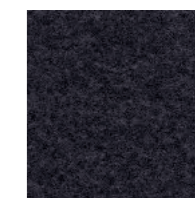
203



343



353



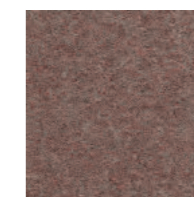
193



413



453



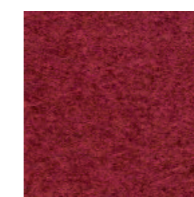
363



433



613



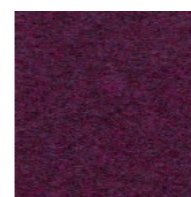
633



653



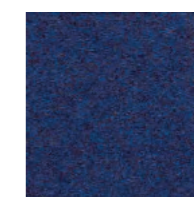
673



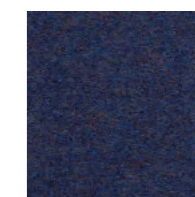
683



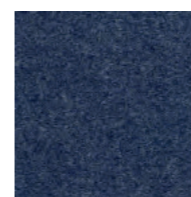
783



773



753



743



733



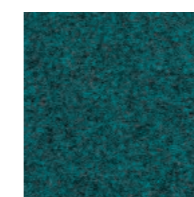
713



813



873



843



943



913

**Resistenza al fuoco / Flame resistance**

EN 1021-1/2  
 BS 5852 (2-5)  
 CA TB 117-2013  
 DIN 4102 B2  
 Önorm B1/Q1  
 NFD 60 013  
 UNI 9175 1IM  
 AS.NZS 1530.3  
 IMO FTP Code 2010 (8)

**Solidità alla luce / Light fastness**

UNI EN ISO 105-B02 (5-7)

**Resistenza all'abrasione / Abrasion resistance**

UNI EN ISO 12947 (≈ 45.000 Martindale)

**Solidità allo sfregamento / Fastness to rubbing**

UNI EN ISO 105-X12 (a secco/dry rubbing 4-5)  
 UNI EN ISO 105-X12 (a umido/wet rubbing 4)

**Pilling**

UNI EN ISO 12945 (3)

**Note**

Leggere differenze di colore fra una partita e l'altra sono da considerarsi normali

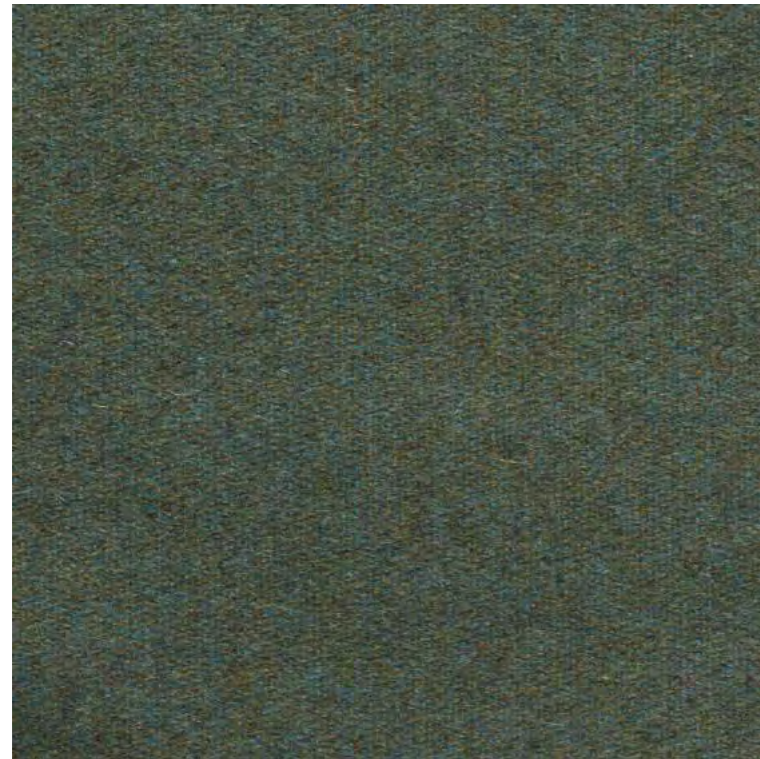
**Notes**

Light colour differences between lots must be considered normal

# kvadrat

For further information  
[kvadrat.dk](http://kvadrat.dk)



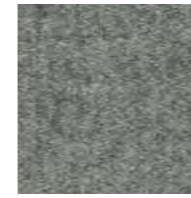


042

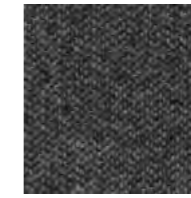
**ST. MORITZ**

**Tipologia:** lana  
**Composizione:** 80% lana, 20% poliammide  
**Larghezza:** 140 cm  
**Peso:** 440 g/mtl  
**Pulizia e manutenzione:** contattare il fornitore al sito [www.linterno.it](http://www.linterno.it).

**Type:** wool  
**Composition:** 80% wool, 20% polyamide  
**Width:** 140 cm  
**Weight:** 440 g/lm  
**Cleaning and maintenance:** contact the supplier through website [www.linterno.it](http://www.linterno.it).



155



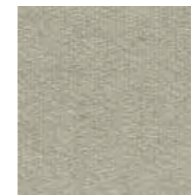
159



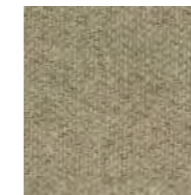
162



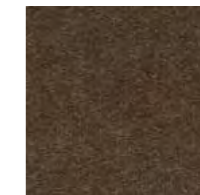
163



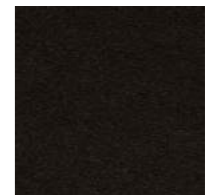
001



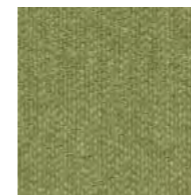
005



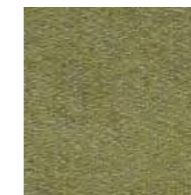
025



081



047



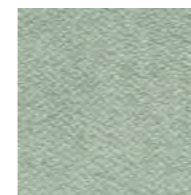
034



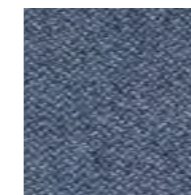
038



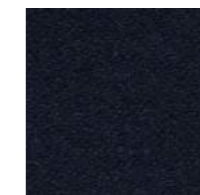
099



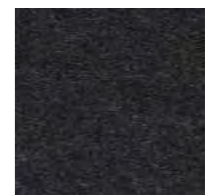
130



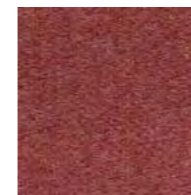
142



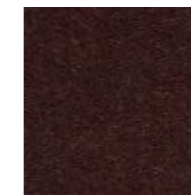
148



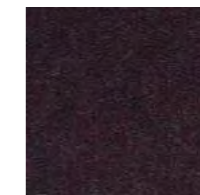
091



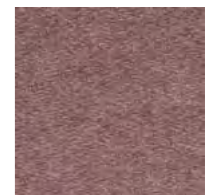
108



075



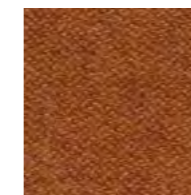
078



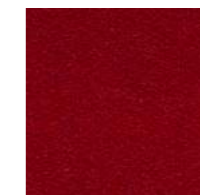
122



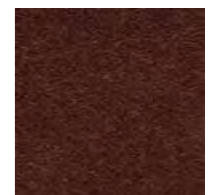
059



064



069



067

**Resistenza al fuoco / Flame resistance**  
 EN 1021-1/2  
 IMO A.652(16)

**Solidità alla luce / Light fastness**  
 UNI EN ISO 105-B02 (5)

**Resistenza all'abrasione / Abrasion resistance**  
 UNI EN ISO 12947 12kpa (≈ 80.000 Martindale)

**Pilling**  
 UNI EN ISO 1512434 0 (3)

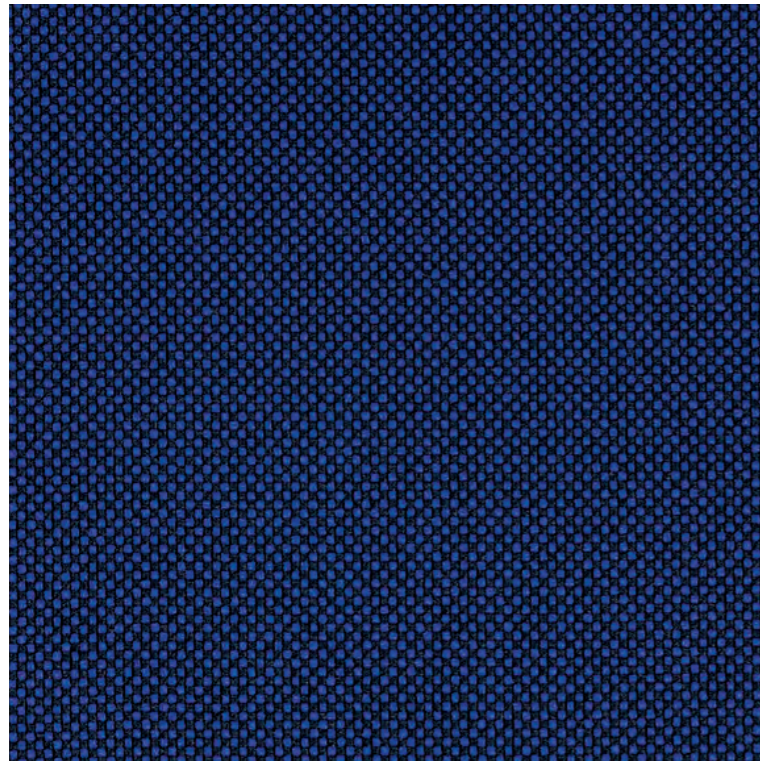
**Note**  
 Leggere differenze di colore fra una partita e l'altra sono da considerarsi normali

**Notes**  
 Light colour differences between lots must be considered normal

**L'INTERNO**  
 DI FRANCO FABBRI

For further information  
[linterno.it](http://linterno.it)





66136

**GO CHECK**

**Tipologia:** trevira  
**Composizione:** 100% poliestere (Trevira cs)  
**Larghezza:** 140 cm  
**Peso:** 435 g/mtl  
**Design:** Inger Mosholt Nielsen  
**Pulizia e manutenzione:** contattare il fornitore al sito [www.gabriel.dk](http://www.gabriel.dk).

**Type:** trevira  
**Composition:** 100% polyester (Trevira cs)  
**Width:** 140 cm  
**Weight:** 435 g/lm  
**Design:** Inger Mosholt Nielsen  
**Cleaning and maintenance:** contact the supplier through website [www.gabriel.dk](http://www.gabriel.dk).

**Resistenza al fuoco / Flame resistance**

EN 1021-1/2  
 BS 5852 (0,1-5)  
 CA TB 117-2013  
 BS 7176  
 DIN 4102 B1  
 DIN EN 13501-1 B-s1,d0  
 NFP 92-503/504/505 M1  
 ÖNORM B1/Q1  
 UNI 9175 1IM  
 FAR/JAR 25.853 (a) (i) (ii)

**Solidità alla luce / Light fastness**

UNI EN ISO 105-B02 (5-8)

**Resistenza all'abrasione / Abrasion resistance**

UNI EN ISO 12947-2 (≈ 80.000 Martindale)

**Solidità allo sfregamento / Fastness to rubbing**

UNI EN ISO 105-X12 (a secco/dry rubbing 4-5)  
 UNI EN ISO 105-X12 (a umido/wet rubbing 4-5)

**Pilling**

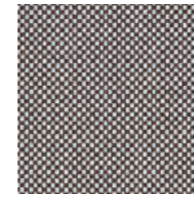
UNI EN ISO 12945-2 (5)

**Note**

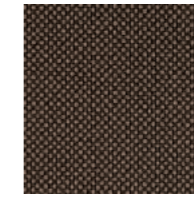
Leggere differenze di colore fra una partita e l'altra sono da considerarsi normali

**Notes**

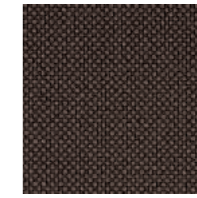
Light colour differences between lots must be considered normal



60079



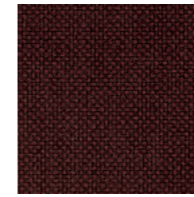
61139



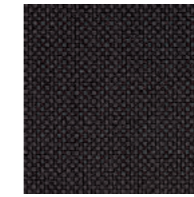
61140



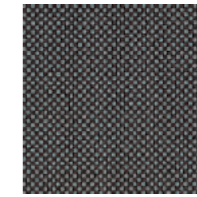
61141



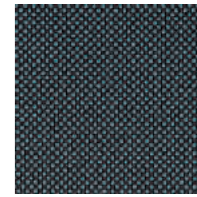
61145



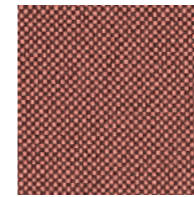
60084



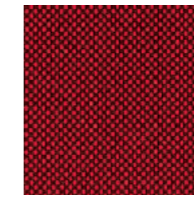
60083



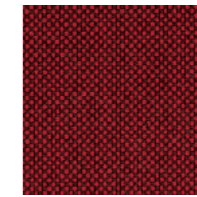
60081



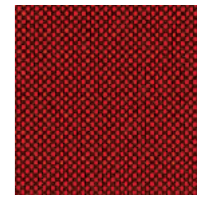
64183



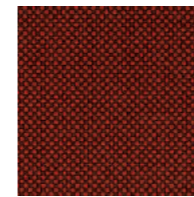
64175



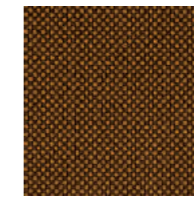
64172



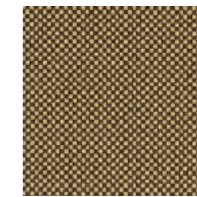
64171



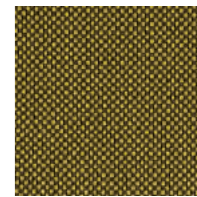
61144



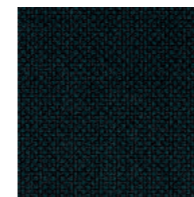
61143



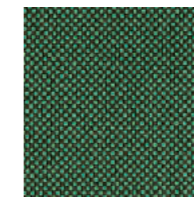
61142



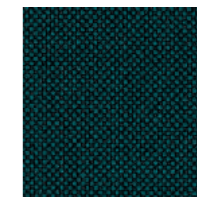
62071



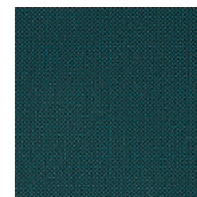
68149



68169



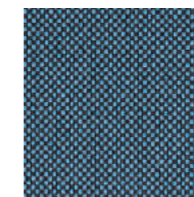
68152



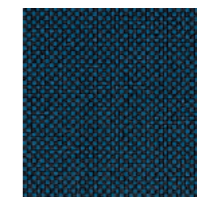
67071



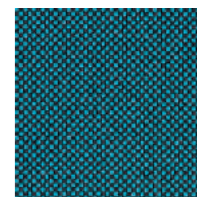
66140



66135



66139

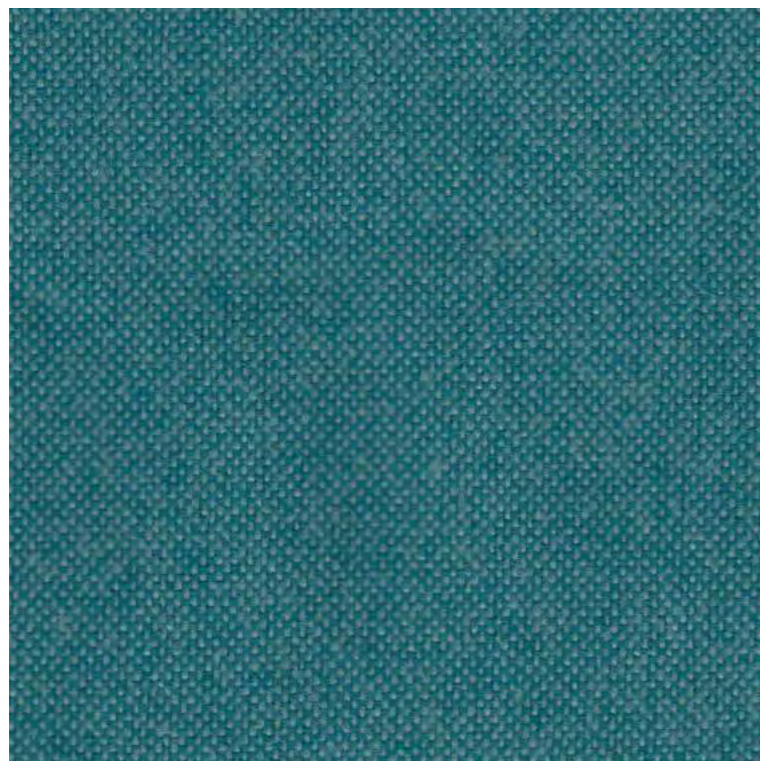


67070

**Gabriel**

For further information  
[gabriel.dk](http://gabriel.dk)





9609

**JET**

**Tipologia:** trevira  
**Composizione:** 100% poliestere (Trevira cs)  
**Larghezza:** 140 cm  
**Peso:** 365 g/mtl  
**Pulizia e manutenzione:** contattare il fornitore al sito [www.fidivi.com](http://www.fidivi.com).

**Type:** trevira  
**Composition:** 100% polyester (Trevira cs)  
**Width:** 140 cm  
**Weight:** 365 g/lm  
**Cleaning and maintenance:** contact the supplier through website [www.fidivi.com](http://www.fidivi.com).

**Resistenza al fuoco / Flame resistance**

EN 1021-1/2  
 BS 5852-2 (5)  
 BS 7176  
 DIN 4102 B1  
 NFP 92501-7 M1  
 NFD 60 013  
 UNI 9174 - UNI 845 C1  
 IMO A.652(16)  
 IMO B (5)-(7)-(8)

**Solidità alla luce / Light fastness**

UNI EN ISO 105-B02 (6)

**Resistenza all'abrasione / Abrasion resistance**

UNI EN ISO 12947-2 (≈ 65.000 Martindale)

**Solidità allo sfregamento / Fastness to rubbing**

UNI EN ISO 105-X12 (a secco/dry rubbing 4-5)  
 UNI EN ISO 105-X12 (a umido/wet rubbing 4-5)

**Pilling**

UNI EN ISO 12945-2 (5)

**Note**

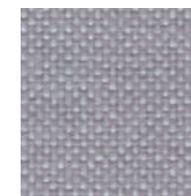
Leggere differenze di colore fra una partita e l'altra sono da considerarsi normali

**Notes**

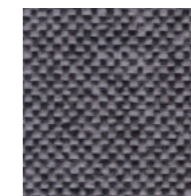
Light colour differences between lots must be considered normal



8001



9803



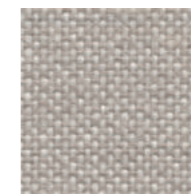
9294



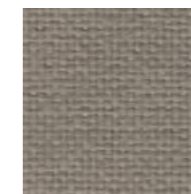
9806



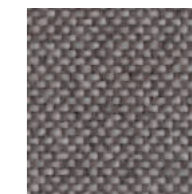
1001



9110



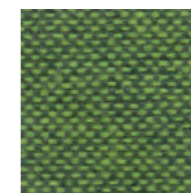
2024



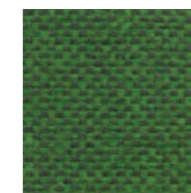
9109



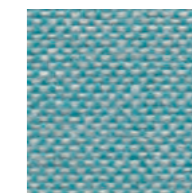
9701



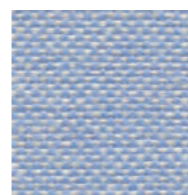
9702



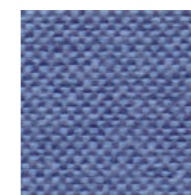
9704



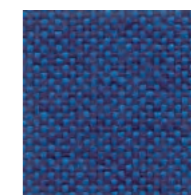
9610



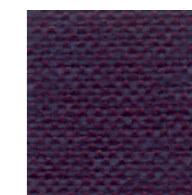
9600



9601



9603



9607



9302



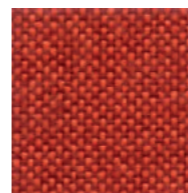
9304



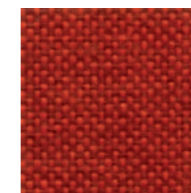
9301



9403



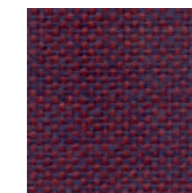
9402



9401



4018



9501





64121

**OBIKA LEATHER+**

**Tipologia:** similpelle  
**Composizione:** 66% poliuretano, 24% poliestere, 10% cotone  
**Larghezza:** 140 cm  
**Peso:** 1000 g/mtl  
**Design:** Inger Mosholt Nielsen / Helene Jensen  
**Pulizia e manutenzione:** contattare il fornitore al sito [www.gabriel.dk](http://www.gabriel.dk).

**Type:** Faux leather  
**Composition:** 66% polyurethane, 24% polyester, 10% cotton  
**Width:** 140 cm  
**Weight:** 1000 g/lm  
**Design:** Inger Mosholt Nielsen / Helene Jensen  
**Cleaning and maintenance:** contact the supplier through website [www.gabriel.dk](http://www.gabriel.dk).



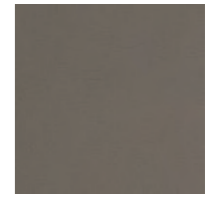
60000



61177



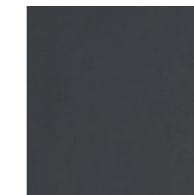
61178



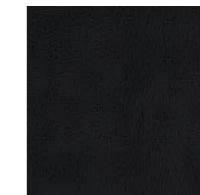
61179



60160



60161



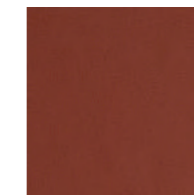
60999



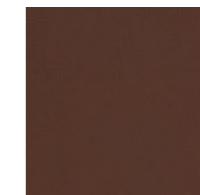
64122



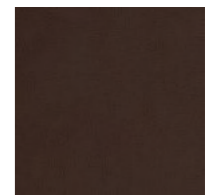
61181



63059



63060



61182

**Resistenza al fuoco / Flame resistance**

EN 1021-1/2  
 BS 5852 (O,1-5)  
 CA TB 117-2013  
 BS 7176  
 DIN 4102 B1  
 NFP 92-503/504/505 M1  
 ÖNORM B1/Q1  
 UNI 9175 1IM  
 FAR/JAR 25.853 (a) (i) (ii)

**Solidità alla luce / Light fastness**

UNI EN ISO 105-B02 (5-7)

**Resistenza all'abrasione / Abrasion resistance**

UNI EN ISO 12947-2 (≈ 250.000 Martindale)

**Solidità allo sfregamento / Fastness to rubbing**

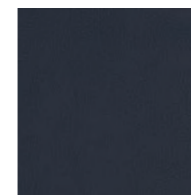
UNI EN ISO 105-X12 (a secco/dry rubbing 4-5)  
 UNI EN ISO 105-X12 (a umido/wet rubbing 4-5)

**Note**

Leggere differenze di colore fra una partita e l'altra sono da considerarsi normali

**Notes**

Light colour differences between lots must be considered normal



66138



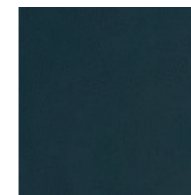
67050



67049



66139



67051



68105

**Gabriel®**

For further information  
[gabriel.dk](http://gabriel.dk)





111

**MAGNUM**

**Tipologia:** similpelle  
**Composizione:** 88% polivinil cloruro, 7% poliestere, 4% cotone, 1% poliuretano  
**Larghezza:** 140 cm  
**Peso:** 715 g/m<sup>2</sup>  
**Pulizia e manutenzione:** contattare il fornitore al sito [www.abitex.eu](http://www.abitex.eu).

**Type:** faux leather  
**Composition:** 88% polyvinyl chloride, 7% polyester, 4% cotton, 1% polyurethane  
**Width:** 140 cm  
**Weight:** 715 g/m<sup>2</sup>  
**Cleaning and maintenance:** contact the supplier through website [www.abitex.eu](http://www.abitex.eu).

**Resistenza al fuoco / Flame resistance**

EN 1021-1/2  
 BS 5852 (O-1)  
 CA TB 117-2013  
 BS 5852 IS 11 (5)  
 DIN 4102-1 B1  
 NFP 503 M1  
 FTP CODE 307(88):10 Annex 7-8  
 UNI 9175 1IM

**Solidità alla luce / Light fastness**

UNI EN ISO 105-B02 (≥7)

**Resistenza all'abrasione / Abrasion resistance**

BS EN ISO 5470-2 (≈ 200.000 Martindale)

**Solidità allo sfregamento / Fastness to rubbing**

UNI EN ISO 105-X12 (a secco/dry rubbing ≥5)  
 UNI EN ISO 105-X12 (a umido/wet rubbing ≥5)

**Note**

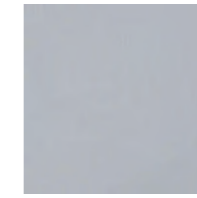
Leggere differenze di colore fra una partita e l'altra sono da considerarsi normali

**Notes**

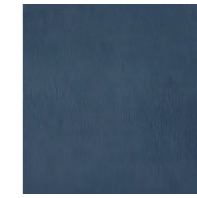
Light colour differences between lots must be considered normal



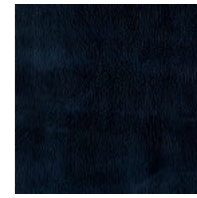
105



603



602



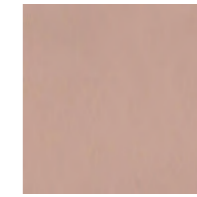
200



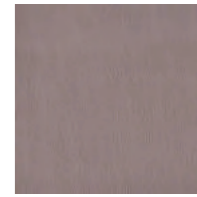
100



103



400



406



503



407



404



405



310



304



302



313



001



706



701



700



500



804



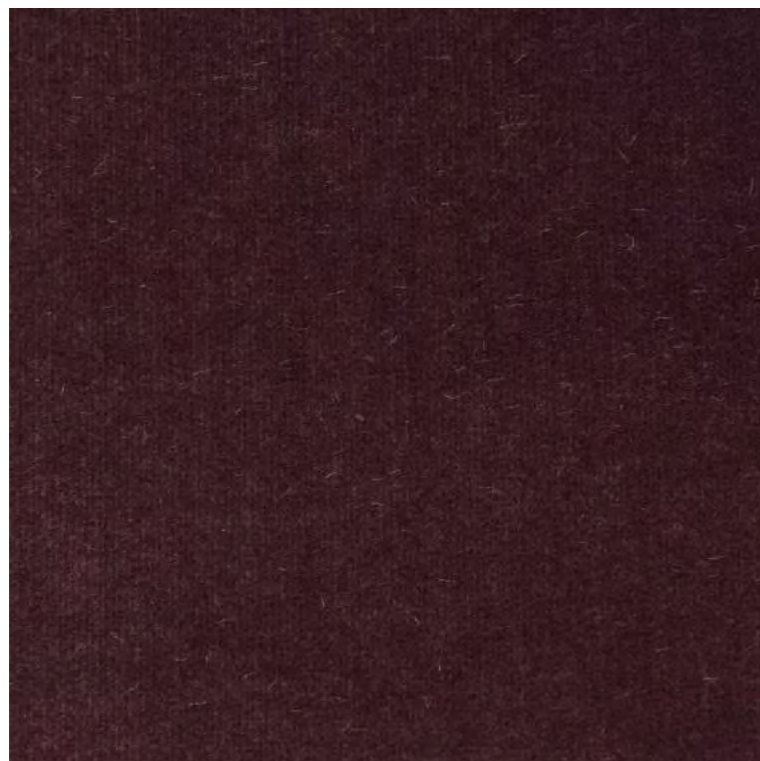
803



002

**ABITEX**

For further information  
[abitex.eu](http://abitex.eu)



0530

**NO\_FIRE**

**Tipologia:** velluto  
**Composizione:** 100% trevira  
**Larghezza:** 140 cm  
**Peso:** 540/580 g/mtl  
**Pulizia e manutenzione:** contattare il fornitore al sito [www.lopificio.it](http://www.lopificio.it).

**Type:** velvet  
**Composition:** 100% trevira  
**Width:** 140 cm  
**Weight:** 540/580 g/lm  
**Cleaning and maintenance:** contact the supplier through website [www.lopificio.it](http://www.lopificio.it).

**Resistenza al fuoco / Flame resistance**

UNI 9177 (Classe 1)  
 BS 5852 (Crib 5)

**Solidità alla luce / Light fastness**

UNI EN ISO 150 B02/04 (6/7)

**Resistenza all'abrasione / Abrasion resistance**

UNI EN ISO 12947-2 /00 (≈ 140.000 Martindale)

**Pilling**

UNI EN ISO 12945-2/02 (5)

**Note**

Leggere differenze di colore fra una partita e l'altra sono da considerarsi normali

**Notes**

Light colour differences between lots must be considered normal



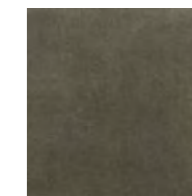
0010



0312



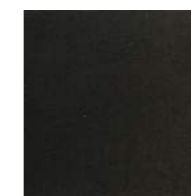
0257



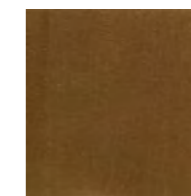
0247



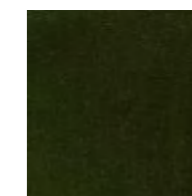
0219



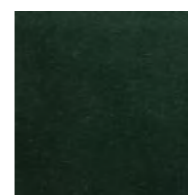
0236



0147



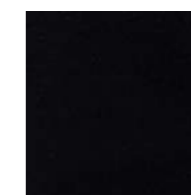
0618



0628



0246



0900



0310



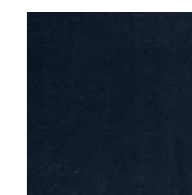
0719



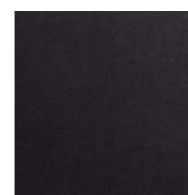
0720



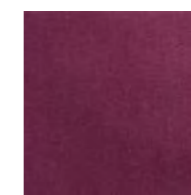
0715



0837



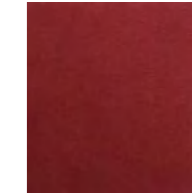
0574



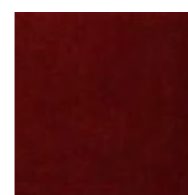
0505



0527



0513



0425



For further information  
[lopificio.it](http://lopificio.it)



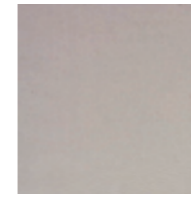


149

**SUPERB**

**Tipologia:** velluto  
**Composizione:** 100% poliestere  
**Larghezza:** 140 cm  
**Peso:** 400 g/m<sup>2</sup>  
**Pulizia e manutenzione:** contattare il fornitore al sito [www.flukso.it](http://www.flukso.it).

**Type:** velvet  
**Composition:** 100% polyester  
**Width:** 140 cm  
**Weight:** 400 g/m<sup>2</sup>  
**Cleaning and maintenance:** contact the supplier through website [www.flukso.it](http://www.flukso.it).



153



152



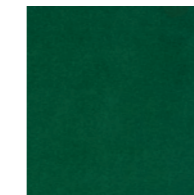
151



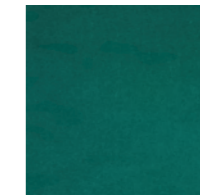
147



137



136



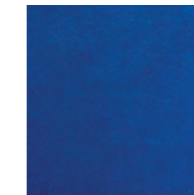
134



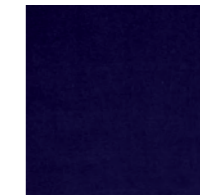
131



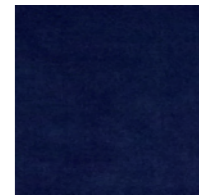
130



126



127



128

**Resistenza al fuoco / Flame resistance**

EN 1021-1  
 EN 1021-2

UNI 9175 - 1IM  
 UNI 9177 - CLASSE 1  
 BS 5852 - CRIB 5  
 NF 92.503 - M1  
 DIN 4102 - B1

**Solidità alla luce / Light fastness**

UNI EN ISO 105-B02 (≥5)

**Resistenza all'abrasione / Abrasion resistance**

UNI EN ISO 12947-2 (≈ 60.000 Martindale)

**Pilling**

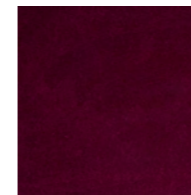
UNI EN ISO 12945-2 (5)

**Note**

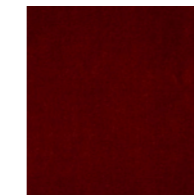
Leggere differenze di colore fra una partita e l'altra sono da considerarsi normali

**Notes**

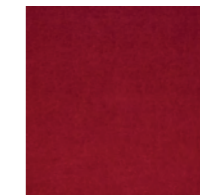
Light colour differences between lots must be considered normal



123



119



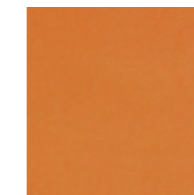
118



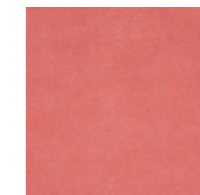
117



112



110



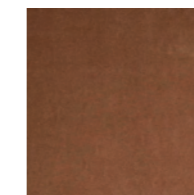
114



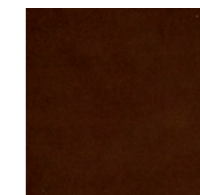
104



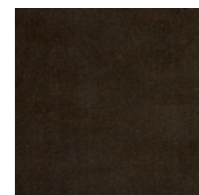
103



143



145

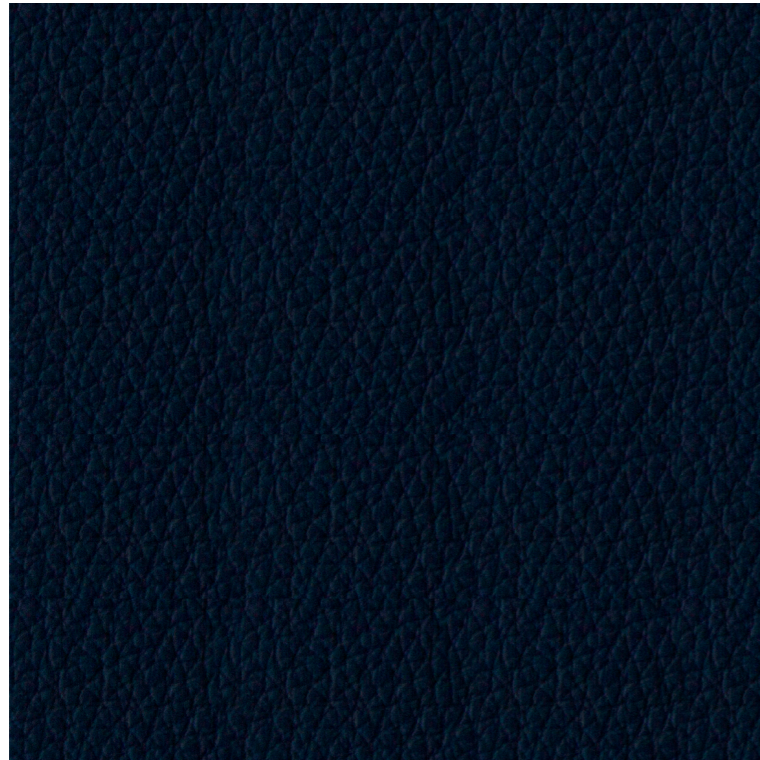


148



For further information  
[flukso.it](http://flukso.it)





275

**LEATHER****Tipologia:** pelle**Composizione:** 100% pelle

**Pulizia e manutenzione:** per pulire macchie o gocce di liquido asciugare delicatamente l'area interessata con un panno inumidito d'acqua tiepida. Fare attenzione a non bagnare eccessivamente l'area, altrimenti tamponare ulteriormente con un panno asciutto. Consigliamo di non strofinare mai la superficie troppo energicamente.

**Type:** leather**Composition:** 100% leather

**Cleaning and maintenance:** to clean stains or drops of liquid, gently wipe the affected area gently with a cloth dampened with warm water. Be careful not to wet the area excessively, otherwise dab with a dry cloth. We recommend never rubbing the surface too hard.

**Resistenza al fuoco / Flame resistance**  
BS 5852 Match & Cigarette test  
BS EN 1021-1-2 Match & Cigarette test

**Solidità alla luce / Light fastness**  
UNI EN ISO 105 B02 >=5

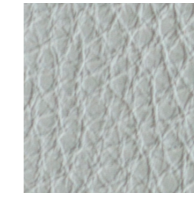
**Solidità allo sfregamento / Fastness to rubbing**  
UNI EN ISO 11640 (a secco/dry rubbing >=4)  
UNI EN ISO 11640 (a umido/wet rubbing >=3/4)

**Note**  
Leggere differenze di colore fra una partita e l'altra sono da considerarsi normali

**Notes**  
Light colour differences between lots must be considered normal



301



286



200



292



398



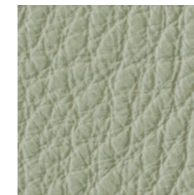
216



217



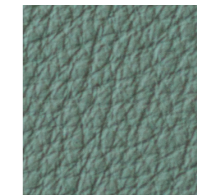
298



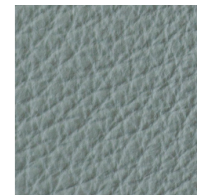
254



256



265



272



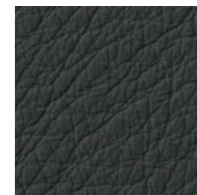
209



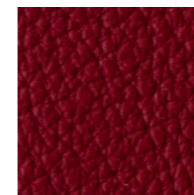
210



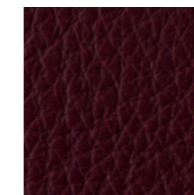
206



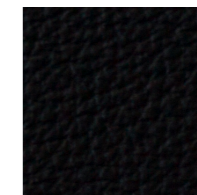
204



248



242

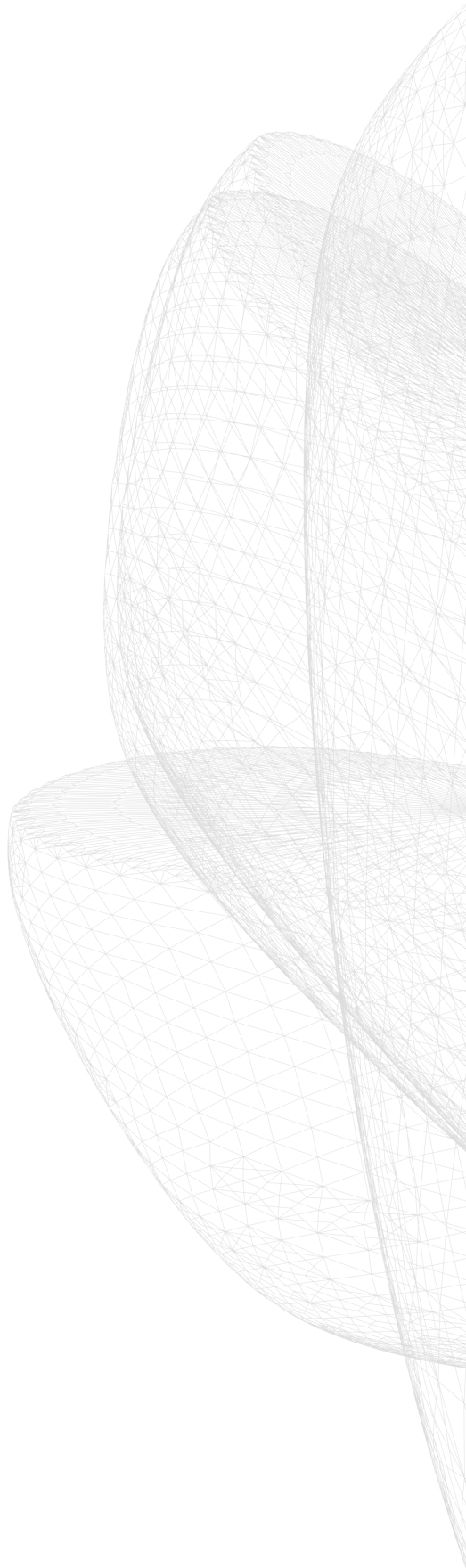


207



Nella stampa su carta la tonalità dei colori non può essere riprodotta fedelmente. Arrmet Srl si riserva la facoltà di apportare modifiche in qualsiasi momento e senza preavviso.

*During printing process, colour tones may not be reproduced faithfully. Arrmet Srl reserves the right to make changes at any time and without any previous notice.*



# arrmet

**arrmet srl**

via alessandro volta 8  
33044 manzano (ud) italy  
ph. +39 0432 937065  
fax +39 0432 740102  
PI/CF: IT 00452180300  
mail@arrmet.it  
**www.arrmet.it**

Inspire | Create | Deliver

P4.