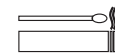


# Synergy



E	
Composition	95% Virgin Wool, 5% Polyamide. Non metallic dyestuffs.
Width	140cm minimum
Weight	400g/m2 ±5% (560g/lin.m. ±5%)
Abrasion	100,000 Martindale cycles 5 year guarantee (full details available)
Flammability	AS 1530.3, BS EN 1021 - 1:2014 (cigarette) BS EN 1021 - 2:2014 (match) BS 7176:2007 Low Hazard UNI 9175 Class 1M Optional - please specify when ordering: BS 5852:2006 Section 4 Ignition Source 5 when FR treated BS 7176:2007 Medium Hazard when FR treated Note: Flammability performance is dependent on foam used.
Light Fastness	5 (ISO 105 - B02:2014)
Fastness to Rubbing	Wet: 4 Dry: 4 (ISO 105 - X12:2002)
Maintenance	Vacuum regularly. Professionally dry clean or wipe clean with a damp cloth.

Please note that ultimate seam performance is dependent on seam construction, and needle and thread type.  
We recommend that appropriate sewing advice be taken.  
Note: We reserve the right to alter technical specifications without notice.  
The Unregistered Design Rights and the Copyright in all designs are the exclusive property of Camira Fabrics Limited.

F	
Composition	95% Laine Vierge, 5% Polyamid. Teintures non métalliques.
Largeur	140cm minimum
Poids	400g/m2 ±5% (560g/lin.m. ±5%)
Résistance à l'abrasion	100,000 cycles Martindale. Garantie de 5 ans (renseignements complémentaires disponibles)
Flammabilité	AS 1530.3, BS EN 1021 - 1:2014 (cigarette) BS EN 1021 - 2:2014 (allumette) BS 7176:2007 Low Hazard UNI 9175 Class 1M <b>Prière de le mentionner lors de la commande:</b> BS 5852:2006 Section 4 Ignition Source 5 si traitement FR BS 7176:2007 Medium Hazard si traitement FR Note: Réaction au feu dépend du composite utilisé.
Solidité à la lumière	5 (ISO 105 - B02:2014)
Solidité au Frottement	Mouillé: 4 Sec: 4 (ISO 105 - X12:2002)
Nettoyage	Aspirer régulièrement. Nettoyage à sec professionnel. Autrement, essuyer avec une étoffe humide.

Veuillez noter que le glissage de la couture sous tension dépend de la structure de la couture, de l'aiguille et du fil. Nous recommandons de prendre conseil au près d'un professionnel.  
Veuillez noter que nous réservons le droit de modifier les spécifications techniques sans préavis.  
Les droits non-déposés sur les designs ainsi que les droits de copie sont la propriété exclusive de Camira Fabrics Limited.



Camira fabrics are brought to Australasia by Textilia

**camira**



D	
Zusammensetzung	95% Schurwolle, 5% Polyamid. Nicht schwermetallhaltige Farbstoffe
Breite	140cm nutzbare Breite
Gewicht	400g/m2 ±5% (560g/lin.m. ±5%)
Scheuerfestigkeit	100,000 Martindale Scheuertouren 5 Jahre Garantie (Details auf Anfrage)
Feuersicherung	AS 1530.3, BS EN 1021 - 1:2014 (cigarette) BS EN 1021 - 2:2014 (match) BS 7176:2007 Low Hazard UNI 9175 Class 1M Bitte bei Auftragserteilung angeben: BS 5852:2006 Section 4 Ignition Source 5 wenn mit FR ausgerüstet BS 7176:2007 Medium Hazard wenn mit FR ausgerüstet Bemerkung: Schwerentflammbarkeit hängt von verwendetem Komponenten ab.
Lichtechtheit	5 (ISO 105 - B02:2014)
Reibechtheit	Nass: 4 Trocken: 4 (ISO 105 - X12:2002)
Reinigung	Regelmässig absaugen. Professionelle Trockenreinigung. Alternativ dazu mit einem feuchten Tuch abwischen.

Eine optimale Nahtausreissfestigkeit hängt von der Nahtfähe , der verwendeten Nadel und des Fadens ab.  
Wir empfehlen daher Nähversuche durchzuführen.  
Anmerkung: Wir behalten uns die Änderungen technischer Spezifikationen vor.  
Die registrierten und nicht registrierten Urheberrechte an den Dessinierungen sind ausschließliches Eigentum der Camira Fabrics Limited.

ES	
Composición	70% Lana Virgen, 30% Lino. Tintes no metálicos.
Ancho	140cm mínimo
Peso	400g/m2 ±5% (560g/lin.m. ±5%)
Resistencia a la abrasion	100,000 Martindale Tours. Garantía de uso 5 años (más información disponible bajo consulta)
Inflamabilidad	AS 1530.3, BS EN 1021 - 1:2014 (cigarillo) BS EN 1021 - 2:2014 (cerilla) BS 7176:2007 Low Hazard UNI 9175 Class 1M Con tratamiento adicional de foamizado por favor especificar cuando se requiere en el pedido: BS 5852:2006 Section 4 Ignition Source 5 estando con tratamiendo FR BS 7176:2007 Medium Hazard estando con tratamiendo FR Condiciones ignifugas dependientes del tipo de foam utilizado
Solidez a la luz	5 (ISO 105 - B02:2014)
Solidez al rozamiento	Húmedo: 4 Seco: 4 (ISO 105 - X12:2002)
Limpieza	Limpiar con aspiradora con regularidad. Limpiar en seco, o bien lavar con un paño húmedo.

El deslizamiento de costura depende de su construcción así como el tipo de aguja e hilo empleados. Se recomienda que pida consejos apropiados para la costura.  
Se reserva el derecho de modificar las especificaciones técnicas sin previo aviso.  
Los derechos sobre dibujos no registrados y los derechos de autor sobre todos los dibujos son propiedad exclusiva de Camira Fabrics Limited.



at work with Camira

AUSTRALIA  
telephone: 1800 173209  
facsimile: 1800 723264  
web: atworkwithcamira.com  
email: sales@atworkwithcamira.com  
\*at work is a brand of Textilia

at work with Camira

NEW ZEALAND  
telephone: +64 9 3685768  
facsimile: +64 9 3685769  
web: textilia.co.nz  
email: info@textilia.co.nz  
\*at work is a brand of Textilia

at work with Camira

Synergy

“2+2 = 75. Where the total is more than the sum of the parts. Say hello to Synergy, our latest hybrid wool blend fabric, featuring exquisite fibre dyed shades and sumptuous piece dyed solids. It all comes together to provide our largest colour offering of 75 intelligent shades.”

# Synergy



**Congregate**  
LDS83



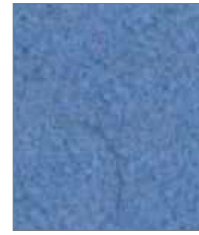
**Affinity**  
LDS74



**Fate**  
LDS07



**Venture**  
LDS05



**Huddle**  
LDS65



**Support**  
LDS55



**Regard**  
LDS54



**Summon**  
LDS45



**Loop**  
LDS18



**Bracket**  
LDS23



**Chain**  
LDS19



**Chemistry**  
LDS35



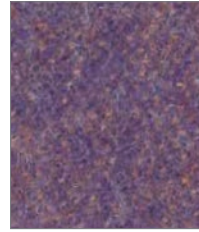
**Mutual**  
LDS84



**Likeness**  
LDS82



**Work**  
LDS73



**Fellowship**  
LDS66



**Order**  
LDS64



**Kinship**  
LDS56



**Pact**  
LDS53



**Gather**  
LDS46



**Relate**  
LDS44



**Affix**  
LDS32



**Serendipity**  
LDS08



**Share**  
LDS85



**Similar**  
LDS81



**Contribution**  
LDS75



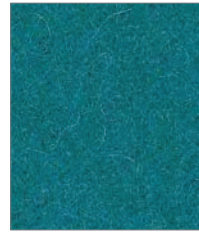
**Compose**  
LDS72



**Warmth**  
LDS67



**Guild**  
LDS63



**Engage**  
LDS57



**Comply**  
LDS52



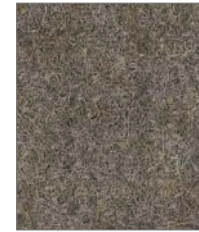
**Integrate**  
LDS47



**Lateral**  
LDS28



**Frame**  
LDS22



**Tag**  
LDS33



**Partner**  
LDS16



**Level**  
LDS20



**Team**  
LDS21



**Global**  
LDS86



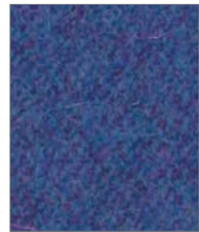
**Apt**  
LDS80



**Success**  
LDS76



**Open**  
LDS71



**Collaborate**  
LDS68



**Family**  
LDS58



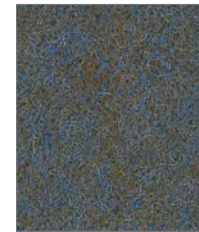
**Kindness**  
LDS51



**Interfuse**  
LDS48



**Linea**  
LDS37



**Unity**  
LDS38



**Pair**  
LDS31



**Bond**  
LDS24



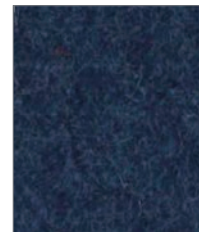
**Values**  
LDS87



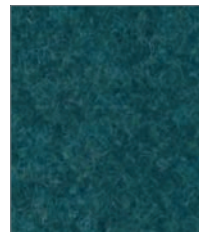
**Combo**  
LDS77



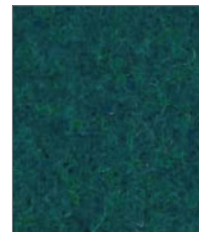
**Medley**  
LDS36



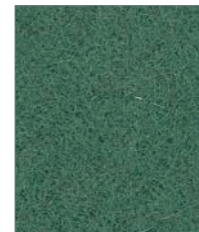
**Alike**  
LDS62



**Group**  
LDS59



**League**  
LDS50



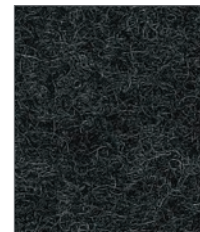
**Append**  
LDS49



**Marry**  
LDS43



**Collective**  
LDS39



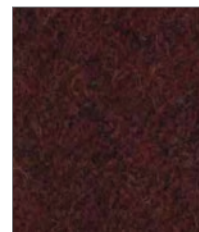
**Mix**  
LDS17



**Hook**  
LDS29



**Compound**  
LDS25



**Process**  
LDS88



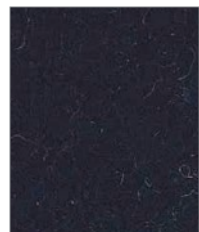
**Amiable**  
LDS79



**Cordial**  
LDS78



**Together**  
LDS70



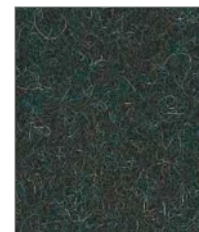
**Sync**  
LDS69



**Assemble**  
LDS61



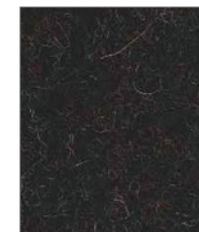
**Accord**  
LDS60



**Couple**  
LDS41



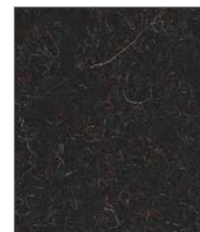
**Intertwine**  
LDS42



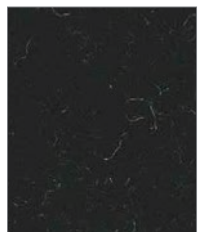
**Co-operate**  
LDS40



**Bridge**  
LDS26



**Wed**  
LDS34



**Seek**  
LDS27