

Betty

design Christoph Jenni



## Dati tecnici

<b>Scocca</b> Struttura interna in acciaio, schiumata con poliuretano espanso.	<b>Struttura</b> Gambe di legno di frassino naturale o verniciato.	<b>Finiture</b> Vedi sezione "Color plan".	
<b>Rivestimenti</b> Rivestimento fisso in tessuto, eco-pelle e pelle, come da cartelle colori. Disponibili anche versioni in tessuto-cliente e pelle-cliente.	<b>Consumo tessuto e pelle</b> <ul style="list-style-type: none"> <li>• Tessuto (uni, senza rapporto, h. 1,40 ml):            Betty B010: completamente rivestita 3,60 ml            Betty B020: completamente rivestita 2,60 ml            Betty B030: completamente rivestita 0,95 ml</li> <li>• Pelle:            Betty B010: completamente rivestita 7 m<sup>2</sup>            Betty B020: completamente rivestita 5,5 m<sup>2</sup>            Betty B030: completamente rivestita 1,5 m<sup>2</sup></li> </ul>		

## Technical details

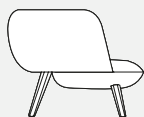
<b>Shell</b> Internal steel structure with polyurethane foam padding.	<b>Frame</b> Ash-wooden legs natural or stained.	<b>Finishes</b> See Section "Color plan".	
<b>Upholstery</b> Fixed upholstery in fabric, eco-pelle or leather, as per colour folders. Also available in customer's own fabric versions and customer's own leather versions.	<b>Fabric and Leather requirements</b> <ul style="list-style-type: none"> <li>• Fabric (uni, without pattern repeat, h. 1,40 ml):            Betty B010: fully upholstered 3,60 ml            Betty B020: fully upholstered 2,60 ml            Betty B030: fully upholstered 0,95 ml</li> <li>• Leather:            Betty B010: fully upholstered 7 m<sup>2</sup>            Betty B020: fully upholstered 5,5 m<sup>2</sup>            Betty B030: fully upholstered 1,5 m<sup>2</sup></li> </ul>		

## Betty Overview

---



Ⓢ B010  
Poltrona con poggiatesta  
/ *Armchair with head-rest*



Ⓢ B020  
Poltrona  
/ *Armchair*



Ⓢ B030  
Ottoman  
/ *Ottoman*

Legenda / Key: Ⓢ Rivestita / *Upholstered*

Betinha

design Christoph Jenni



## Dati tecnici

<b>Scocca</b> Struttura interna in acciaio, schiumata con poliuretano espanso.	<b>Struttura</b> Gambe di legno di rovere naturale o verniciato.	<b>Finiture</b> Vedi sezione "Color plan".	
<b>Rivestimenti</b> Rivestimento fisso in tessuto, eco-pelle e pelle, come da cartelle colori. Disponibili anche versioni in tessuto-cliente e pelle-cliente.	<b>Consumo tessuto e pelle</b> <ul style="list-style-type: none"> <li>• Tessuto (uni, senza rapporto, h. 1,40 ml): completamente rivestita 1,50 ml</li> <li>• Pelle: completamente rivestita 2,60 m<sup>2</sup></li> </ul>		

## Technical details

<b>Shell</b> Internal steel structure with polyurethane foam padding.	<b>Frame</b> Oak-wooden legs natural or stained.	<b>Finishes</b> See Section "Color plan".	
<b>Upholstery</b> Fixed upholstery in fabric, eco-pelle or leather, as per colour folders. Also available in customer's own fabric versions and customer's own leather versions.	<b>Fabric and Leather requirements</b> <ul style="list-style-type: none"> <li>• Fabric (uni, without pattern repeat, h. 1,40 ml): fully upholstered 1,50 ml</li> <li>• Leather: fully upholstered 2,60 m<sup>2</sup></li> </ul>		

## Betinha Overview

---



Ⓢ B040  
Poltroncina  
*/ Small armchair*

Legenda / Key: Ⓢ Rivestita / Upholstered

### Scocca / Shell

---

Rivestita / Upholstered:  
Tessuto / Fabric  
Pelle / Leather  
Eco-Pelle / Eco-leather

Vedi Maxdesign Toolbox /  
See Maxdesign Toolbox

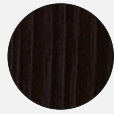
### Betty – Struttura / Frame

---

Legno /  
Wood



Natural Ash

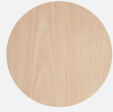


Dark Ash

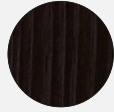
### Betinha – Struttura / Frame

---

Legno /  
Wood



Natural Oak



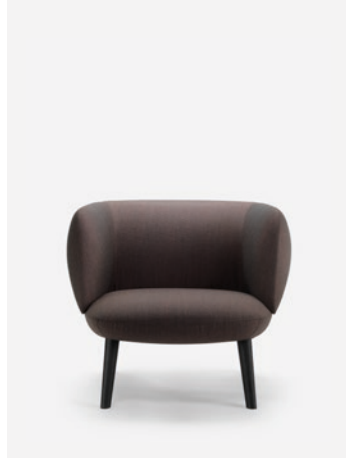
Dark Oak

# Betty, Betinha

## Finiture / Finishes



Cod. B010 / B030  
Upholstered  
Wood Dark Ash



Cod. B020  
Upholstered  
Wood Dark Ash



Cod. B040  
Upholstered  
Wood Natural Oak



Cod. B040  
Upholstered  
Wood Dark Oak



Cod. B040  
Upholstered  
Wood Dark Oak



**Inspire. Create. Deliver.**