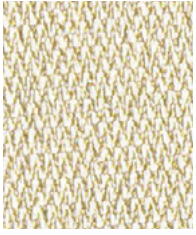


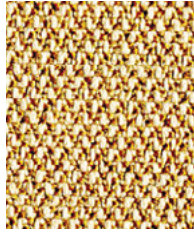
**Era**

---

**camira**



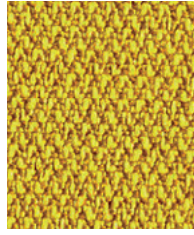
**Transition**  
CSE30



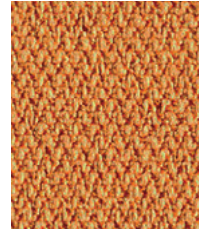
**Splitsecond**  
CSE31



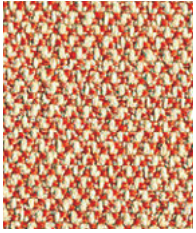
**Lifetime**  
CSE03



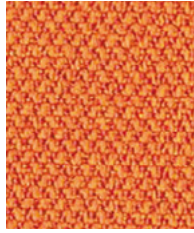
**Occasion**  
CSE32



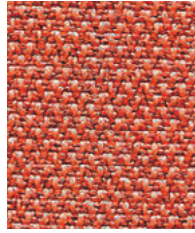
**Measure**  
CSE27



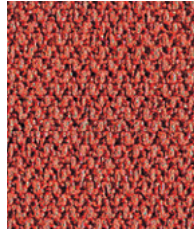
**Sequence**  
CSE25



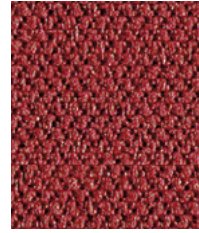
**Span**  
CSE05



**Turn**  
CSE26



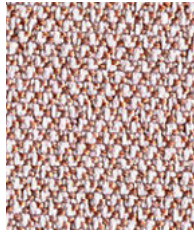
**Experience**  
CSE29



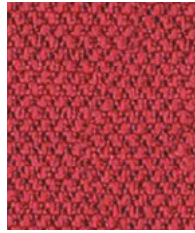
**Extent**  
CSE28



**Calendar**  
CSE19



**Date**  
CSE24



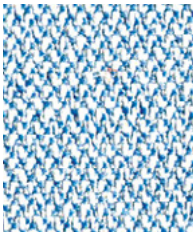
**Cycle**  
CSE06



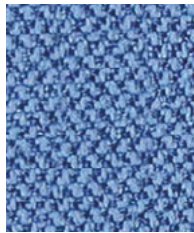
**Phase**  
CSE17



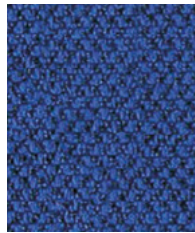
**Prime**  
CSE09



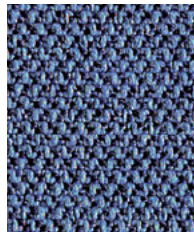
**Allowance**  
CSE38



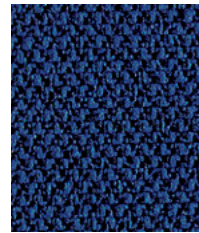
**Chapter**  
CSE08



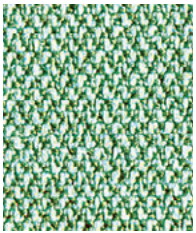
**Perennial**  
CSE12



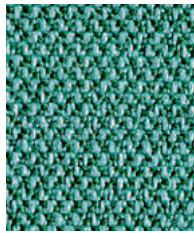
**Range**  
CSE42



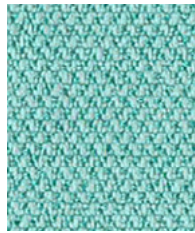
**Maturity**  
CSE40



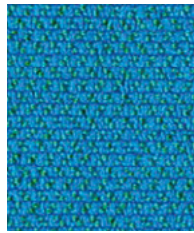
**Notation**  
CSE36



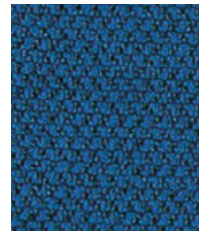
**Rest**  
CSE37



**Aeon**  
CSE20



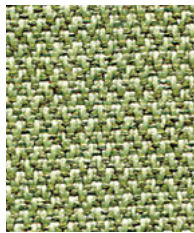
**Everlasting**  
CSE10



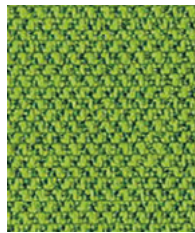
**Stage**  
CSE15



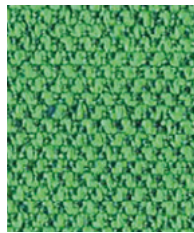
**Period**  
CSE07



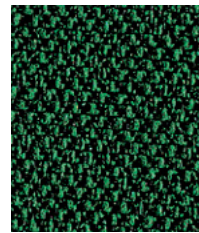
**Endurance**  
CSE34



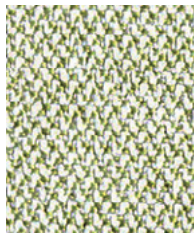
**Timelapse**  
CSE16



**Event**  
CSE18



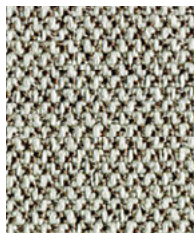
**Signature**  
CSE35



**Analogue**  
CSE33



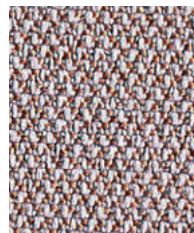
**Futurist**  
CSE01



**Prompt**  
CSE45



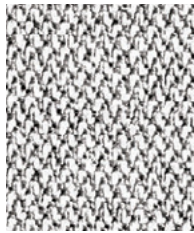
**Generation**  
CSE02



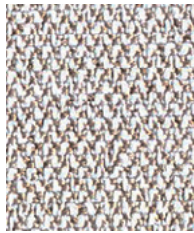
**Occurrence**  
CSE23



**History**  
CSE21



**Memo**  
CSE46



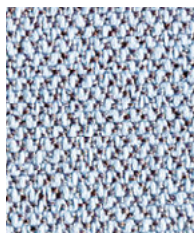
**Quota**  
CSE41



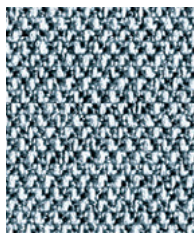
**Forecast**  
CSE11



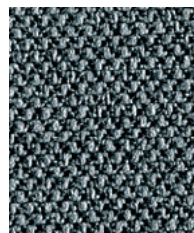
**Present**  
CSE13



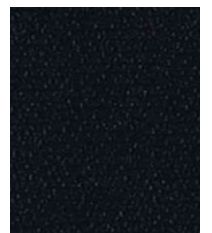
**Youth**  
CSE39



**Late**  
CSE43



**Elapse**  
CSE44



**Forward**  
CSE14



Task seating



Lounge seating



Panels

Bleach  
cleanable

Washable



Acoustic



Year guarantee

With Treatment



Drapery

Era is a subtle, two tone polyester fabric containing stretch in both directions for ease of upholstery. The baby herringbone weave offers an understated contemporary texture while its coloring technique provides close up intrigue. The palette incorporates playful brights and sophisticated muted tones.

**STANDARD  
100**11-43686  
Shirley

www.oeko-tex.com



Era meets the ACT voluntary Performance Guidelines and is classified for Heavy Duty Upholstery. Era is a UL Recognized Component.

## Technical information

### EN

**Composition**  
100% Polyester

**Environment**  
Certified to STANDARD 100 By OEKO-TEX®  
Certified to Indoor Advantage™ Gold  
Non metallic dyestuffs.

**Width**  
54 inches minimum

**Weight**  
9<sup>1/2</sup> oz/sq yd ±5% (14<sup>1/4</sup> oz/running yd ±5%)

**Abrasion Resistance\***  
ASTM D4157 Wyzenbeek method, Heavy Duty Upholstery  
Independently certified to ≥100,000 double rubs  
Covered by a full and comprehensive 10 year guarantee  
(full details available)

**Flammability**  
California Technical Bulletin 117  
NFPA 260 + UFAC Class 1  
BS 7176 Low Hazard  
ASTM E84 Class 1 or A (Adhered)  
ASTM E84 Class 1 or A (Un-adhered)  
UL 723

**With FR Treatment (Gorts):**  
NFPA 701  
*Note: Flammability performance is dependent on components used. Our certificates show what substrates have been used in our tests. For composite tests customers must ensure their complete furniture meets the necessary standards.*

**Color Fastness to Light**  
AATCC-16 (40 hours) Class 4

**Color Fastness to Crocking**  
AATCC-8 (Dry: 4, Wet: 3)

**Acoustic Properties**  
Acoustically transparent, acoustic graphs available upon request.

**Bleach Cleanable**  
ISO 105 E03 color change 4 for dilution factor 1:4 chlorine solution

**Cleaning**  
W/S  
Vacuum regularly. Wipe with a damp cloth using a proprietary upholstery shampoo/soap. For deeper cleaning use steam, bleach, alcohol or professionally dry clean. Can be washed at 140F. Full details can be found in our cleaning and disinfection guide.

\*Abrasion test results exceeding ACT Performance Guidelines are not an indicator of product lifespan. Multiple factors affect fabric durability and appearance retention. We're confident in the durability of our products so we provide a robust 10 year guarantee (full details available). This product is externally certified, details of which are on our website and available from our customer services team. Batch to batch variations in shade may occur within commercial tolerances. We reserve the right to alter technical specifications without notice. The Unregistered Design Rights and the Copyright in all designs are the exclusive property of Camira Fabrics Limited.

### F

**Composition**  
100% Polyester

**Écologique**  
Certifié à STANDARD 100 By OEKO-TEX®  
Certifié à Indoor Advantage™ Gold  
Teintures non métalliques.

**Largeur**  
54 pouces minimum

**Poids**  
9<sup>1/2</sup> oz/sq yd ±5% (14<sup>1/4</sup> oz/lin. ±5%)

**Résistance à l'abrasion\***  
ASTM D4157 Wyzenbeek method, Heavy Duty Upholstery  
Certificat indépendant ≥100,000 double frottement  
Avec une garantie totale de durabilité de 10 ans  
(renseignements complémentaires disponibles)

**Flammabilité**  
California Technical Bulletin 117  
NFPA 260 + UFAC Class 1  
BS 7176 Low Hazard  
ASTM E84 Class 1 or A (Adhered)  
ASTM E84 Class 1 or A (Un-adhered)  
UL 723

**Avec traitement FR (Gorts):**  
NFPA 701  
*Notez: La performance de flammabilité dépend des composantes utilisées. Nos certificats indiquent les substrats utilisés dans nos tests. Pour les tests composites, les clients doivent s'assurer que leurs meubles complets satisfont aux normes nécessaires.*

**Solidité à la Lumière**  
AATCC-16 (40 heures) Class 4

**Solidité à la Crocking**  
AATCC-8 (Sec: 4 minimum, Mouillé: 3)

**Propriétés Acoustiques**  
Acoustiquement transparent, graphiques acoustiques disponibles sur demande.

**Nettoyable au javel**  
ISO 105 E03 changement de couleur 4 pour le facteur de dilution 1: 4 solution de chlore

**Nettoyage**  
W/S  
Passez l'aspirateur régulièrement. Essayez avec un chiffon humide en utilisant un shampooing / savon pour tissus d'ameublement exclusif. Pour un nettoyage en profondeur, utilisez la vapeur, javel, alcool ou un nettoyage à sec professionnel. Peut être lavé à la machine, programme maximum 140F. Vous trouverez tous les détails dans notre guide de nettoyage et de désinfection.

\*Les résultats des tests d'abrasion dépassant les directives de performance ACT ne sont pas un indicateur de la durée de vie du produit. De multiples facteurs affectent la durabilité du tissu et la conservation de son apparence. Nous sommes confiants dans la durabilité de nos produits, nous offrons donc une solide garantie de 10 ans (tous les détails sont disponibles). Ce produit est certifié en externe, dont les détails sont sur notre site Web et disponible auprès de notre équipe de service à la clientèle. Des variations de teinte d'un lot à l'autre peuvent se produire dans les tolérances commerciales. Nous nous réservons le droit de modifier les spécifications techniques sans préavis. Les droits de conception non enregistrés et le droit d'auteur sur toutes les conceptions sont la propriété exclusive de Camira Fabrics Limited.

### ES

**Composición**  
100% Poliéster

**Ambiental**  
Certificado de STANDARD 100 By OEKO-TEX®  
Certificado de Indoor Advantage™ Gold  
Tintes no metálicos.

**Ancho**  
54 pulgadas mínimo

**Peso**  
9<sup>1/2</sup> oz/sq yd ±5% (14<sup>1/4</sup> oz/lin.y ±5%)

**Resistencia a la abrasión\***  
ASTM D4157 Wyzenbeek method, Heavy Duty Upholstery  
independientemente del certificado de ≥100,000  
rozamiento doble  
Con garantía total de uso 10 años  
(más información disponible bajo consulta)

**Inflamabilidad**  
California Technical Bulletin 117  
NFPA 260 + UFAC Class 1  
BS 7176 Low Hazard  
ASTM E84 Class 1 or A (Adhered)  
ASTM E84 Class 1 or A (Un-adhered)  
UL 723

**Con tratamiento FR (Gorts):**  
NFPA 701  
*Nota: El rendimiento de la inflamabilidad depende de los componentes usados. Nuestros certificados muestran qué substratos se han usado en nuestros tests. Para tests compuestos nuestros clientes deben asegurar si sus muebles cumplen la normativa al uso.*

**Solidez a la Luz**  
AATCC-16 (40 heures) Class 4

**Solidez al Rozamiento**  
AATCC-8 (Seco: 4, Húmedo: 3)

**Acústico Propiedades**  
Acústicamente transparente, gráficos disponibles bajo petición.

**Posibilidad lavado con Lejía**  
ISO 105 E03 cambio color 4 para un factor de disolución 1:4 solución cloro

**Limpeza**  
W/S  
Uso aspirador regularmente. Limpiar con un trapo usando jabón y agua o producto limpieza para tapicerías. Para una limpieza más profunda usen vapor, lejía, alcohol o limpieza en seco. Se puede lavar a 140F. Los detalles completos se encuentran en nuestra guía de limpieza y desinfección.

\*Los resultados de las pruebas de abrasión que exceden las pautas de rendimiento ACT no son un indicador de la vida útil del producto. Múltiples factores afectan la durabilidad y aspecto del tejido. Confiamos en la durabilidad de nuestros productos, por lo que ofrecemos una sólida garantía de 10 años (detalles completos disponibles). Este producto se certifica externamente, todos los detalles están disponibles en nuestra web y el departamento de atención al cliente se los puede facilitar. Pequeñas variaciones de color entre diferentes tintados son posibles dentro de las tolerancias comerciales. Nos reservamos el derecho a modificar las especificaciones técnicas sin previo aviso. Los derechos de diseño no registrados y el copyright de todos nuestros diseños son propiedad exclusiva de Camira Fabrics Limited.

**Inspire. Create. Deliver.**