

FINISHES

2025

FINISHES

PEDRALI

2025

**PEDRALI**<sup>®</sup>

**Pedrali SpA**

Sp 122 Mornico Al Serio

24050 Bergamo - Italy

Export Dept. Tel: +39 035 8358840

Ufficio Commerciale Italia Tel: +39 035 8358810

[info@pedrali.it](mailto:info@pedrali.it)

[www.pedrali.com](http://www.pedrali.com)

FINISHES\_25\_01\_DIGITAL

**PEDRALI®**

Beauty,  
tradition  
and innovation

## Finishes index

Indice delle finiture

PRODUCT NAME NOME PRODOTTO	PAGE PAGINA
<b>UPHOLSTERY COLLECTIONS</b> COLLEZIONI IMBOTTITI	
<b>Fabrics</b> / Tessuti	007
<b>Hard Leather</b> / Cuoio	054
<b>Leather</b> / Pelle	050
<b>Simil Leather</b> / Finta pelle	042
<b>Velvet</b> / Velluto	057
 <b>POWDER COATED CAST-IRON, STEEL AND ALUMINIUM</b> GHISA, ACCIAIO E ALLUMINIO VERNICIATI	
<b>Indoor</b> / Per uso interno	064
<b>Outdoor</b> / Per uso esterno	067

# Material for upholstery and cushions

## Rivestimenti per imbottiture e cuscini



# Legend

## Legenda

<b>Fire-retardant</b> Ignifugo	<b>Outdoor use</b> Adatto per uso esterno
<b>washing / lavaggio</b>	
<b>Do not wash</b> Lavaggio a secco	<b>Tumble dry at low temperature</b> Asciugatrice a bassa temperatura
<b>Hand wash</b> Lavaggio a mano	<b>Do not tumble dry</b> Non asciugare in asciugatrice
<b>Wash at max 30°C normal</b> Lavaggio normale, max 30°C	<b>Dry flat</b> Asciugare disteso
<b>Wash at max 30°C mild</b> Lavaggio delicato, max 30°C	<b>Do not wring</b> Non strizzare
<b>Wash at max 40°C normal</b> Lavaggio normale, max 40°C	<b>ironing / stiratura</b>
<b>Wash at max 60°C mild</b> Lavaggio delicato, max 60°C	<b>Do not iron</b> Non stirare
<b>dry cleaning / lavaggio a secco</b>	<b>Iron at low temperature</b> Stirare a bassa temperatura
<b>Do not dry clean</b> Lavaggio a secco non consentito	<b>Iron at medium temperature</b> Stirare a media temperatura
<b>Dry clean, perchloroethylene (PCE)</b> Lavaggio a secco con percloroetilene (PCE)	<b>bleaching / candeggiio</b>
<b>Gentle dry cleaning with PCE</b> Lavaggio a secco delicato con PCE	<b>Do not bleach</b> Non candeggiare
	<b>Any bleaching agent allowed</b> Candeggiio consentito

**Compliant to Ecolabel UE environmental requirements**  
Conforme ai requisiti ambientali Ecolabel UE

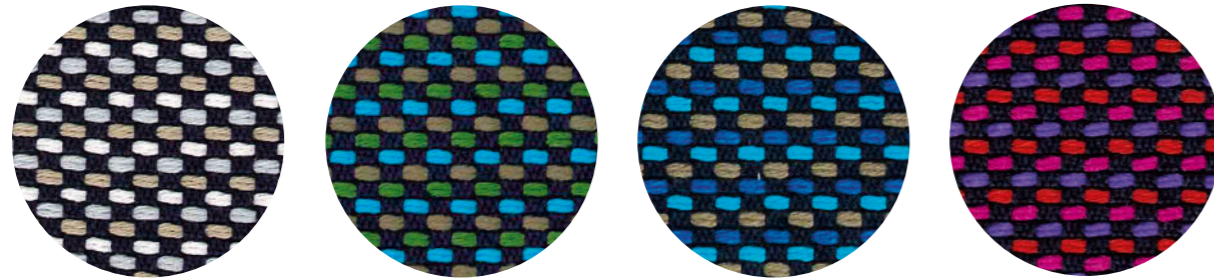
**Product certified for low chemical emissions:**  
Prodotto certificato per basse emissioni chimiche:  
**UL.COM/GG**  
**UL 2818**

**96/98/CE – 2010/68/UE EU marine equipment rules compliant**  
Conforme ai requisiti europei per equipaggiamenti marittimi

# Upholstery Collections

Collezioni imbottiti

# Fabrics Tessuti



C 37

C 38

C 39

C 36

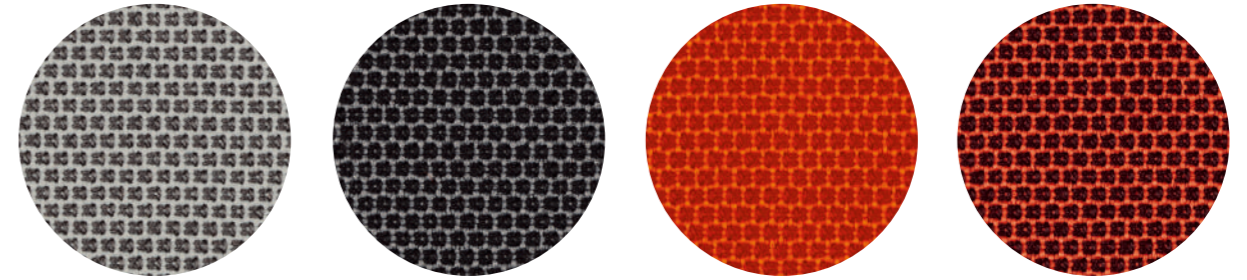
technical specifications / specifiche tecniche



- COMPOSITION / COMPOSIZIONE  
94% Cotton  
6% Polyamide
- WEIGHT / GRAMMATURA  
480 g/m<sup>2</sup> (14.16 oz/yd<sup>2</sup>)

- ABRASION / ABRASIONE  
40.000 cycles, Martindale  
(EN ISO 12947-2)
- RUBBING FASTNESS / SOLIDITÀ ALLO SFREGAMENTO  
Dry 4-5 and Wet 2-3, scale 1-5  
(ISO 105-X12)

- PILLING  
4, scale 1-5 (EN ISO 12945-2  
to 5.000 cycles)
- LIGHT FASTNESS / SOLIDITÀ ALLA LUCE  
4-5, scale 1-8 (ISO 105-B02)

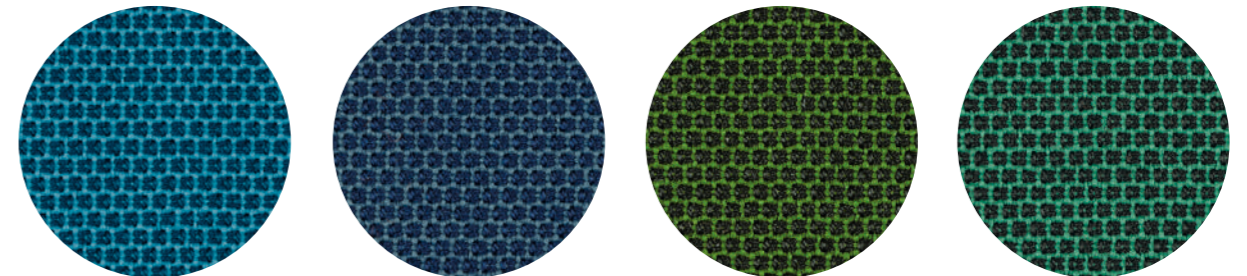


C 101

C 86

C 85

C 89

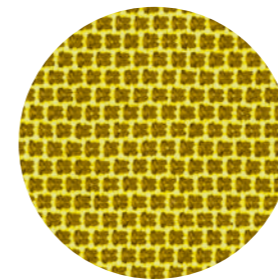


C 83

C 100

C 84

C 88



C 87

technical specifications / specifiche tecniche



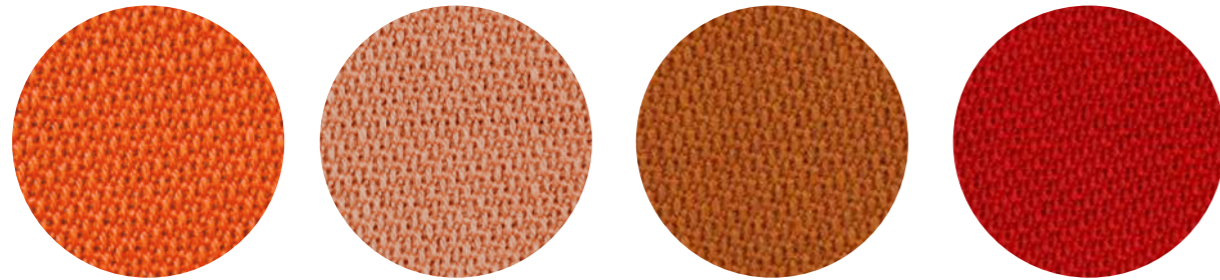
- COMPOSITION / COMPOSIZIONE  
54% New Zealand Wool  
44% Post-consumer recycled polyester  
2% Polyamide
- WEIGHT / GRAMMATURA  
307 g/m<sup>2</sup> (9.05 oz/yd<sup>2</sup>)

- APPROVED / OMOLOGATO

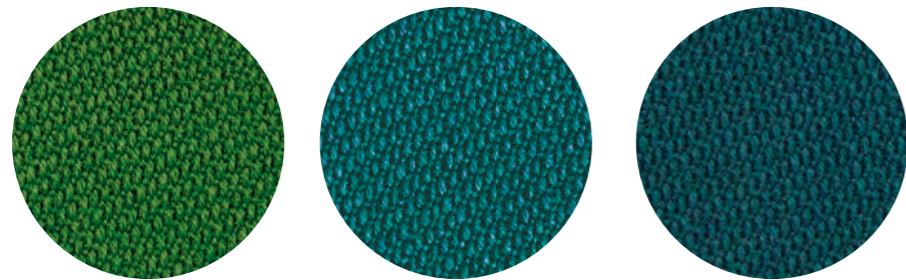


- ABRASION / ABRASIONE  
100.000 cycles, Martindale  
(EN ISO 12947-2)
- RUBBING FASTNESS / SOLIDITÀ ALLO SFREGAMENTO  
Dry and Wet 4-5, scale 1-5  
(ISO 105-X12)
- PILLING  
4-5, scale 1-5 (EN ISO 12945-2)
- LIGHT FASTNESS / SOLIDITÀ ALLA LUCE  
5-7, scale 1-8 (ISO 105-B02)

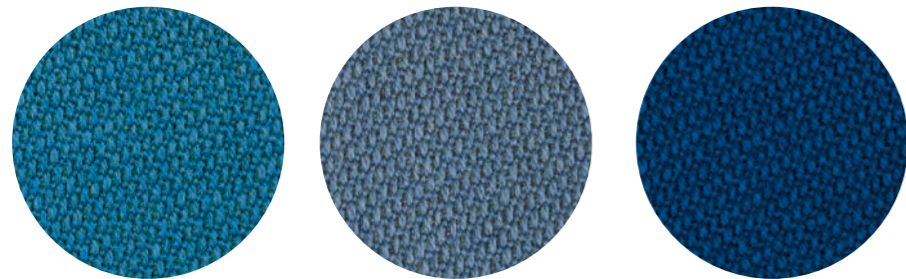
- FLAME RESISTANCE / RESISTENZA AL FUOCO  
EN 1021 - 1/2  
EN 1021-1  
ÖNORM A3800-1  
US CA TB 117-2013 - Compliant  
to the criteria certifying the  
absence of flame retardant  
chemicals (AB 2998)



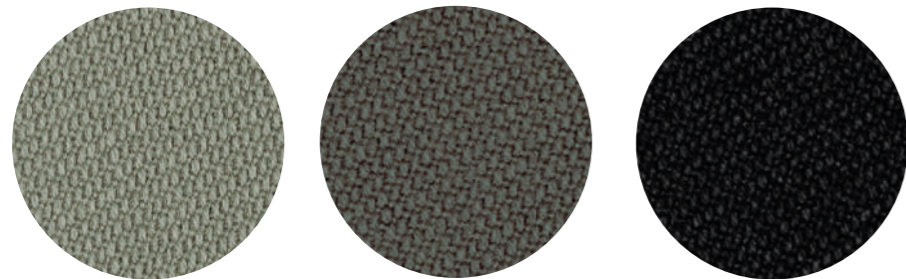
C 110 C 111 C 112 C 113



C 117 C 118 C 119



C 120 C 121 C 122

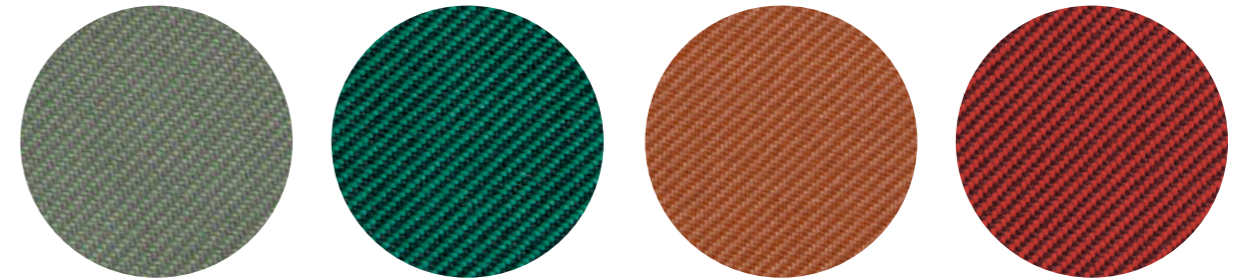


C 114 C 115 C 116

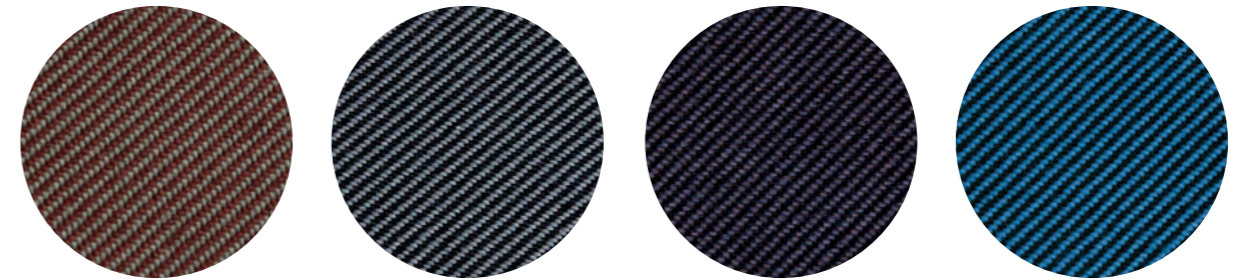
technical specifications / specifiche tecniche



- COLLECTION / COLLEZIONE **svensson-SEMI**
- COMPOSITION / COMPOSIZIONE 85% Wool, 15% Polyamide
- WEIGHT / GRAMMATURA 330 g/m<sup>2</sup> (9.73 oz/yd<sup>2</sup>)
- ABRASION / ABRASIONE 100.000 cycles, Martindale (EN ISO 12947-2)
- RUBBING FASTNESS / SOLIDITÀ ALLO SFREGAMENTO Dry 4 and Wet 3-4, scale 1-5 (ISO 105-X12)
- LIGHT FASTNESS / SOLIDITÀ ALLA LUCE 5-7, scale 1-8 (ISO 105-B02)
- FLAME RESISTANCE / RESISTENZA AL FUOCO BS 5852 Crib 5 EN 1021 - 1/2 IMO FTP Code 2010: Part 8
- UNI 9175 Classe 1 IM US CA TB 117-2013 - Compliant to the criteria certifying the absence of flame retardant chemicals (AB 2998)



C 210 C 211 C 212 C 213



C 214 C 215 C 216 C 217

technical specifications / specifiche tecniche

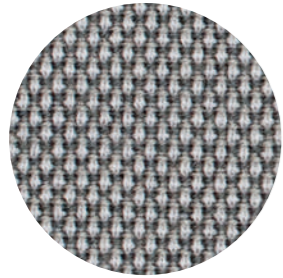


- COLLECTION / COLLEZIONE **kvadrat-RELATE** DESIGNER Patricia Urquiola
- COMPOSITION / COMPOSIZIONE 100% TREVIRA CS®
- WEIGHT / GRAMMATURA 320 g/m<sup>2</sup> (9.47 oz/yd<sup>2</sup>)
- ABRASION / ABRASIONE 80.000 cycles, Martindale (EN ISO 12947)
- RUBBING FASTNESS / SOLIDITÀ ALLO SFREGAMENTO Dry and Wet 5, scale 1-5 (ISO 105-X12)
- PILLING 4-5, scale 1-5 (EN ISO 12945)
- LIGHT FASTNESS / SOLIDITÀ ALLA LUCE 6-7, scale 1-8 (ISO 105-B02)
- SOUND ABSORPTION / ASSORBIMENTO ACUSTICO folded:  $\alpha_w = 0.70$  Class C (EN ISO 354)
- FLAME RESISTANCE / RESISTENZA AL FUOCO AS/NZS 3837 Class 2 ASTM E84 Class B Adhered ASTM E84 Class A Unadhered BS 5852 Part 1 with treatment BS 5867 Part 2 type B DIN 4102 B1
- EN 1021 - 1/2 EN 13501-1, B-s1, d0 GB 8624 B1 FAR 25.853 IMO FTP Code 2010: Part 8 IMO FTP Code 2010: Part 5 NF D60-013 NF P92 507 M1 NFPA 701 ÖNORM B1/Q1 CAN ULC S102 S109 SN 198 898 5.2 UNI 9177 Classe 1 UNI 9175 Classe 1 IM US CA TB 117-2013

APPROVED / OMOLOGATO



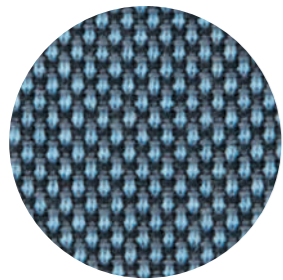
CATEGORY D / CATEGORIA D



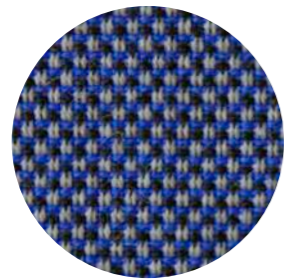
D 40



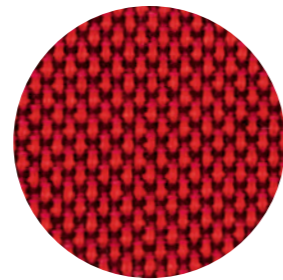
D 41



D 43



D 44



D 42

technical specifications / specifiche tecniche



- **COMPOSITION / COMPOSIZIONE**  
88% New Zealand Wool  
12% Polyamide
- **WEIGHT / GRAMMATURA**  
420 g/m<sup>2</sup> (12.39 oz/yd<sup>2</sup>)
- **ABRASION / ABRASIONE**  
100.000 cycles, Martindale  
(EN ISO 12947-2)
- **RUBBING FASTNESS / SOLIDITÀ ALLO SFREGAMENTO**  
Dry and Wet 4-5, scale 1-5  
(ISO 105-X12)
- **PILLING**  
4-5, scale 1-5 (EN ISO 12945-2)
- **LIGHT FASTNESS / SOLIDITÀ ALLA LUCE**  
5-7, scale 1-8 (ISO 105-B02)
- **FLAME RESISTANCE / RESISTENZA AL FUOCO**  
ASTM E84 Class 2  
EN 1021 – 1/2  
BS 5852 Part 1 0, 1  
NF D60-013  
UNI 9175 Classe 1 IM  
US CA TB 117-2013 - Compliant  
to the criteria certifying the  
absence of flame retardant  
chemicals (AB 2998)

- APPROVED / OMOLOGATO



CATEGORY D / CATEGORIA D



D 120



D 121



D 122



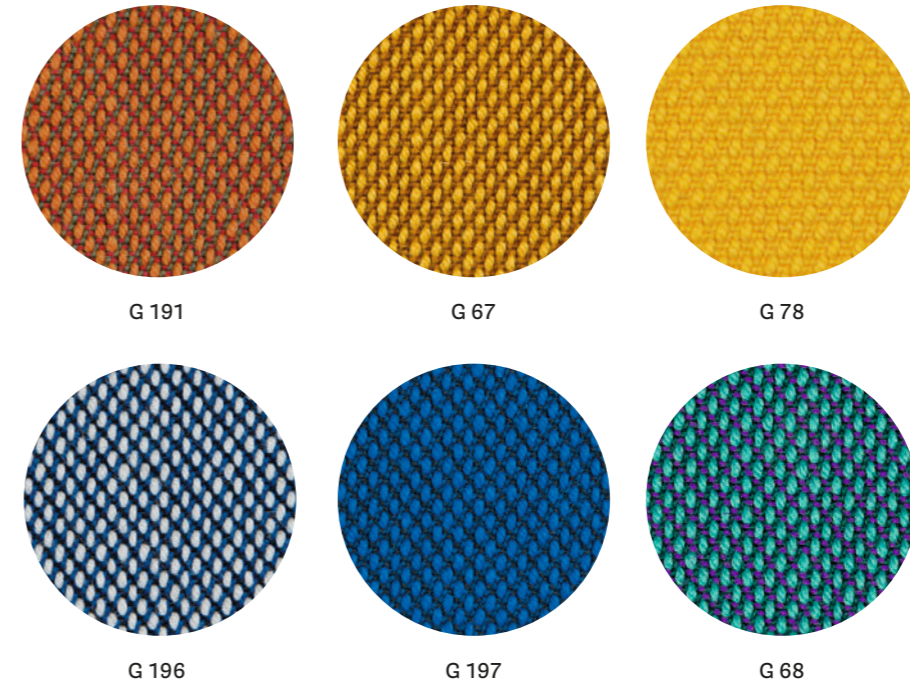
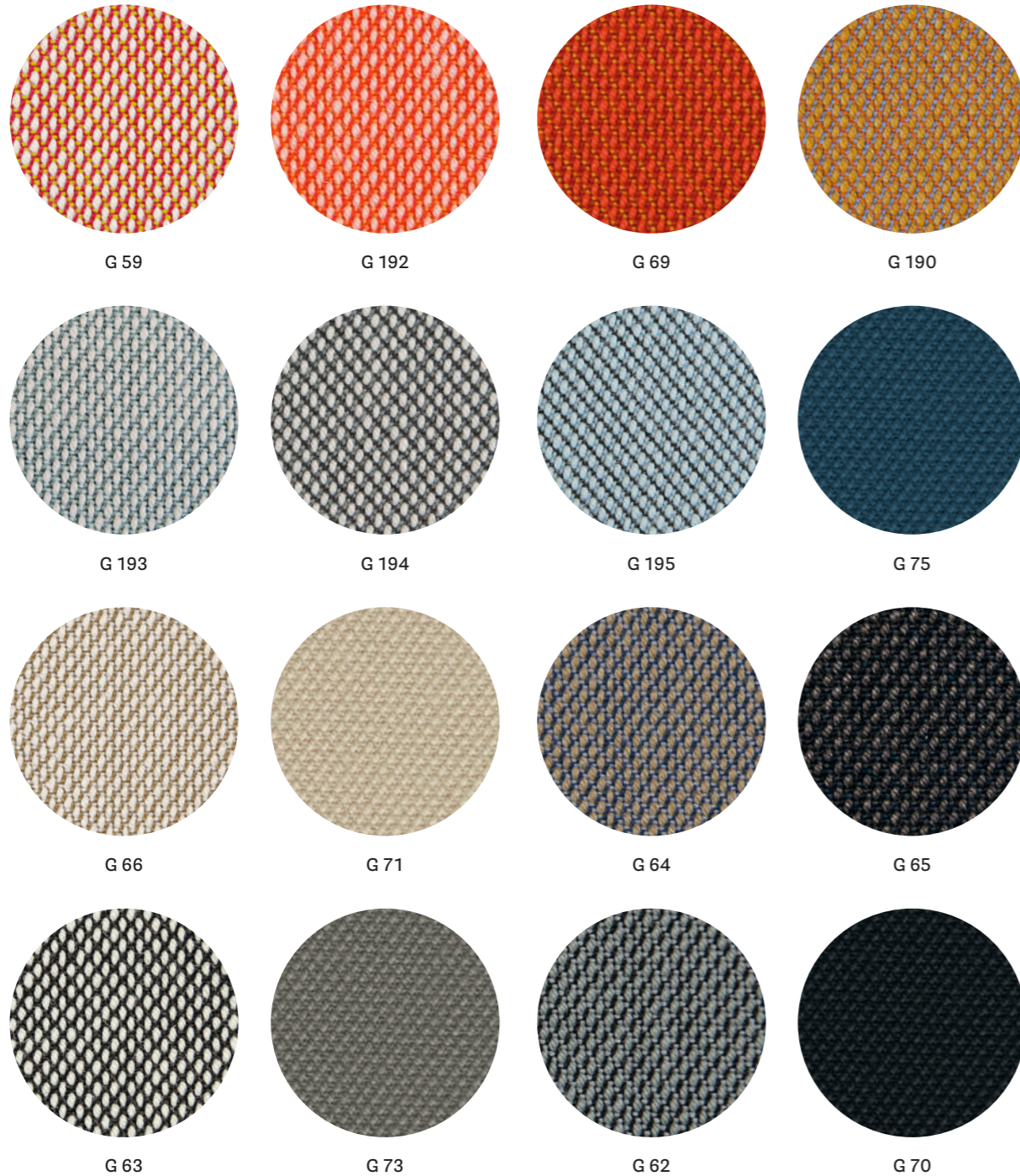
D 123

technical specifications / specifiche tecniche



- **COMPOSITION / COMPOSIZIONE**  
22% Acrylic  
22% Virgin Wool  
22% Polyester  
14% Viscose  
13% Cotton  
7% Linen
- **WEIGHT / GRAMMATURA**  
580 g/m<sup>2</sup> (17.11 oz/yd<sup>2</sup>)
- **ABRASION / ABRASIONE**  
30.000 cycles, Martindale  
(EN ISO 12947-2)
- **RUBBING FASTNESS / SOLIDITÀ ALLO SFREGAMENTO**  
Dry 4-5 and Wet 3, scale 1-5  
(ISO 105-X12)
- **PILLING**  
4, scale 1-5 (EN ISO 12945-2 to  
5.000 rubs)
- **LIGHT FASTNESS / SOLIDITÀ ALLA LUCE**  
5-6, scale 1-8  
(ISO 105 – B02)
- **FLAME RESISTANCE / RESISTENZA AL FUOCO**  
BS 5852 Part 1  
US CA TB 117-2013 - Compliant to  
the criteria certifying the absence of  
flame retardant chemicals (AB 2998)





technical specifications / specifiche tecniche



• COLLECTION / COLLEZIONE

**kvadrat**

G59+G69; G190+G197: STEELCUT TRIO  
G70+G78: STEELCUT

DESIGNERS Dijkmeijer & Ridolfo

• COMPOSITION / COMPOSIZIONE

90% New wool  
10% Nylon

• WEIGHT / GRAMMATURA

550 g/m<sup>2</sup> (16.22 oz/yd<sup>2</sup>)  
for G70+G78: 590 g/m<sup>2</sup> (17.37 oz/yd<sup>2</sup>)

• ABRASION / ABRASIONE

100.000 cycles  
Martindale (EN ISO 12947)

• RUBBING FASTNESS / SOLIDITÀ ALLO SFREGAMENTO

Dry and Wet 4-5,  
for G70+G78: Dry 4 and Wet 3-4,  
scale 1-5 (ISO 105-X12)

• PILLING

4, scale 1-5; for G70+G78: 3-4, scale 1-5  
(EN ISO 12945)

• LIGHT FASTNESS / SOLIDITÀ ALLA LUCE

6-7, for G70+G78: 6 scale 1-8  
(ISO 105-B02)

• SOUND ABSORPTION / ASSORBIMENTO ACUSTICO

folded:  $\alpha_w = 0.95$  Class A  
for G70+G78: folded:  $\alpha_w = 0.80$  Class B  
(EN ISO 354)

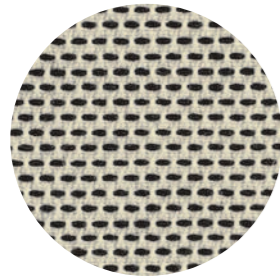
• FLAME RESISTANCE / RESISTENZA AL FUOCO

AS/NZS 1530.3  
AS/NZS 3837 Class 2  
ASTM E84 Class B Adhered

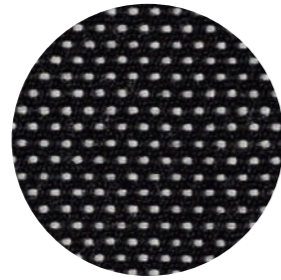
BS 5852 Part 1  
EN 1021 - 1/2  
IMO FTP Code 2010: Part 8  
NF D60-013  
NFPA 260  
ÖNORM B1/Q1  
SN 198 898 5.3 with treatment  
UNI 9175 Classe 1 IM  
US CA TB 117-2013 - Compliant  
to the criteria certifying the absence  
of flame retardant chemicals (AB  
2998)  
for G59+G69 | G190+G197:  
ASTM E84 Class B Unadhered  
for G70+G78:  
ASTM E84 Class A Unadhered  
EN 13501, B-s2, d1, with treatment

• APPROVED / OMOLOGATO

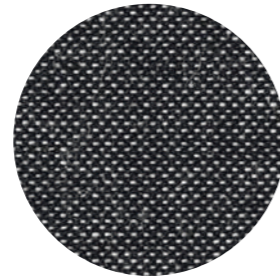




G 101



G 100



G 102

technical specifications / specifiche tecniche



• COLLECTION / COLLEZIONE  
**kvadrat** - BASEL  
DESIGNERS Herzog & de Meuron

• COMPOSITION / COMPOSIZIONE  
90% New wool  
10% Nylon

• WEIGHT / GRAMMATURA  
365 g/m<sup>2</sup> (10.76 oz/yd<sup>2</sup>)

• ABRASION / ABRASIONE  
50.000 cycles,  
Martindale (EN ISO 12947)

• RUBBING FASTNESS / SOLIDITÀ ALLO SFREGAMENTO  
Dry and Wet 5, scale 1-5  
(ISO 105-X12)

• PILLING  
4, scale 1-5 (EN ISO 12945)

• LIGHT FASTNESS / SOLIDITÀ ALLA LUCE  
6-7, scale 1-8 (ISO 105-B02)

• FLAME RESISTANCE / RESISTENZA AL FUOCO  
AS/NZS 3837 Class 2  
BS 5852 Part 1  
EN 1021 - 1/2

IMO FTP Code 2010: Part 8  
NFPA 260  
NF D60-013  
ÖNORM B1/Q1  
SN 198 898 5.3 with treatment  
UNI 9175 Classe 1 IM  
US CA TB 117-2013 - Compliant  
to the criteria certifying the  
absence of flame retardant  
chemicals (AB 2998)

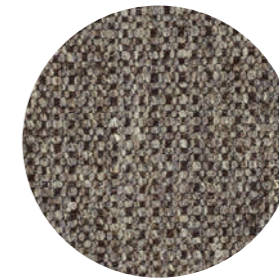
• APPROVED / OMOLOGATO



G 120



G 121



G 122

technical specifications / specifiche tecniche



• COLLECTION / COLLEZIONE  
**kvadrat** - MOLLY  
DESIGNER Åsa Pärson

• COMPOSITION / COMPOSIZIONE  
100% New wool

• WEIGHT / GRAMMATURA  
493 g/m<sup>2</sup> (14.54 oz/yd<sup>2</sup>)

• ABRASION / ABRASIONE  
75.000 cycles,  
Martindale (EN ISO 12947)

• RUBBING FASTNESS / SOLIDITÀ ALLO SFREGAMENTO  
Dry 5 and Wet 4-5, scale 1-5  
(ISO 105-X12)

• PILLING  
3-4, scale 1-5 (EN ISO 12945)

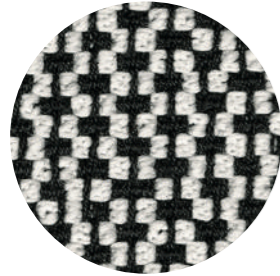
• LIGHT FASTNESS / SOLIDITÀ ALLA LUCE  
6-7, scale 1-8 (ISO 105-B02)

• FLAME RESISTANCE / RESISTENZA AL FUOCO  
AS/NZS 3837 Class 2  
ASTM E84 Class A Adhered  
ASTM E84 Class B Unadhered

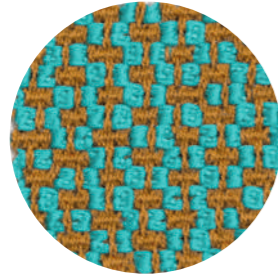
BS 5852 Part 1  
EN 1021 - 1/2  
IMO FTP Code 2010: Part 8  
NFPA 260  
NF D60-013  
ÖNORM B1/Q1  
SN 198 898 5.3 with treatment  
UNI 9175 Classe 1 IM  
US CA TB 117-2013 - Compliant  
to the criteria certifying the  
absence of flame retardant  
chemicals (AB 2998)

• APPROVED / OMOLOGATO

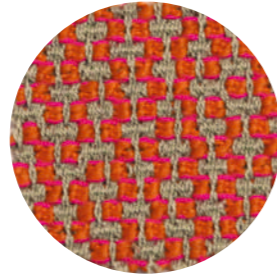




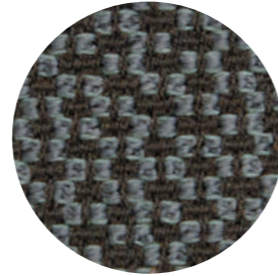
G 130



G 131



G 132



G 133

technical specifications / specifiche tecniche

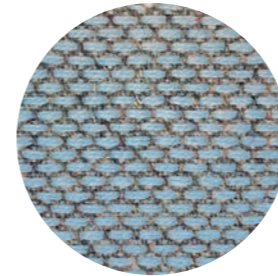


- COMPOSITION / COMPOSIZIONE  
95% Virgin Wool  
5% Polyamide
- WEIGHT / GRAMMATURA  
660 g/m<sup>2</sup> (19.47 oz/yd<sup>2</sup>)
- ABRASION / ABRASIONE  
52.000 cycles, Martindale  
(EN ISO 12947-2)

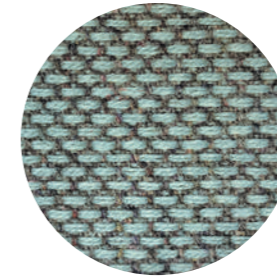
- PILLING  
4-5, scale 1-5 (EN ISO 12945-2)
- LIGHT FASTNESS / SOLIDITÀ ALLA LUCE  
5-8, scale 1-8 (ISO 105-B02)
- SOUND ABSORPTION / ASSORBIMENTO ACUSTICO  
folded:  $\alpha_w = 0.85$  Class B (ISO 11654)
- FLAME RESISTANCE / RESISTENZA AL FUOCO  
BS 5852 Part 1  
BS 5852 Crib 5

DIN 4102-1 B2  
EN 1021 – 1/2  
EN 13501-1  
FAR 25.853 (12 sec. vertical)  
IMO: 2014/90/EU (MED)  
UNI 9175 Classe 1 IM  
US CA TB 117-2013 - Compliant to  
the criteria certifying the absence of  
flame retardant chemicals (AB 2998)

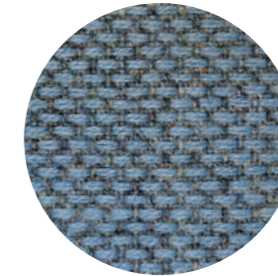
- APPROVED / OMOLOGATO



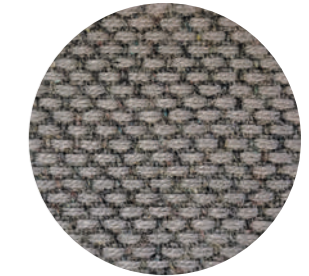
G 143



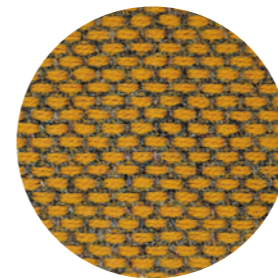
G 145



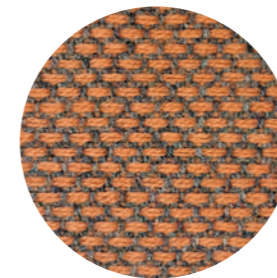
G 144



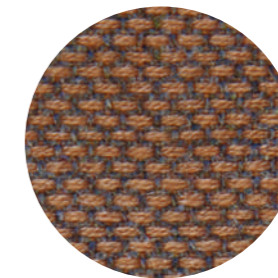
G 146



G 140



G 141



G 142

technical specifications / specifiche tecniche



- COLLECTION / COLLEZIONE  
**kvadrat** - RE-WOOL  
DESIGNER Margrethe Odgaard
- COMPOSITION / COMPOSIZIONE  
45% Recycled wool  
45% New wool  
10% Nylon
- WEIGHT / GRAMMATURA  
385 g/m<sup>2</sup> (11.35 oz/yd<sup>2</sup>)
- ABRASION / ABRASIONE  
100.000 cycles, Martindale  
(EN ISO 12947)

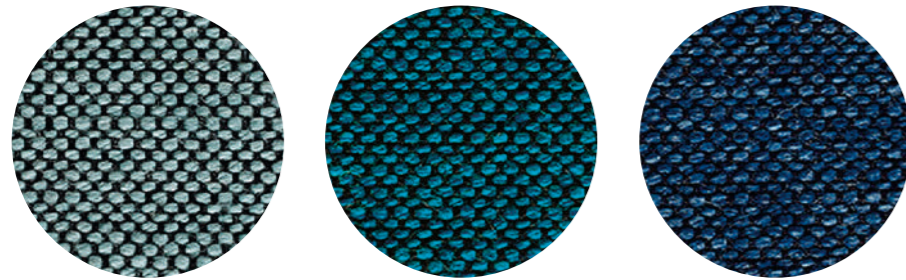
- RUBBING FASTNESS / SOLIDITÀ ALLO SFREGAMENTO  
Dry 4-5 and Wet 4, scale 1-5  
(ISO 105-X12)
- PILLING  
4, scale 1-5 (EN ISO 12945)
- LIGHT FASTNESS / SOLIDITÀ ALLA LUCE  
6, scale 1-8 (ISO 105-B02)
- SOUND ABSORPTION / ASSORBIMENTO ACUSTICO  
folded:  $\alpha_w = 0.75$  Class C (EN ISO 354)
- FLAME RESISTANCE / RESISTENZA AL FUOCO  
AS/NZS 1530.3  
AS/NZS 3837 Class 2

BS 5852 Part 1  
EN 1021 – 1/2  
EN 13501, B-s2, d0, with treatment  
IMO FTP Code 2010: Part 8  
NF D60-013  
SN 198 898 5.3 with treatment  
ÖNORM B1/Q1  
UNI 9175 Classe 1 IM  
US CA TB 117-2013 - Compliant to  
the criteria certifying the absence of  
flame retardant chemicals (AB 2998)

- APPROVED / OMOLOGATO



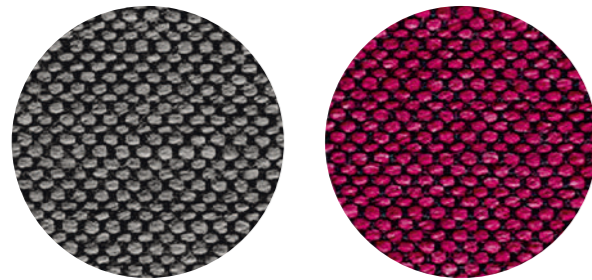
PRODUCT CERTIFIED  
FOR LOW CHEMICAL  
EMISSIONS:  
UL.COM/IGG  
UL 2818  
170166-420



G 154

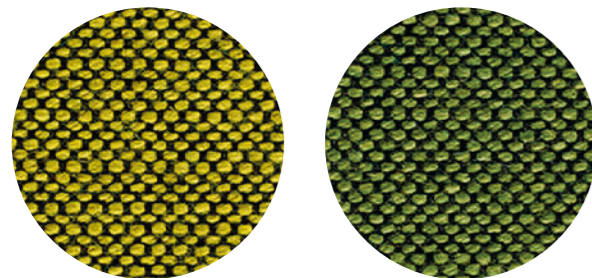
G 155

G 156



G 151

G 150



G 152

G 153

technical specifications / specifiche tecniche



• COLLECTION / COLLEZIONE  
**svensson - BALANCE**

• COMPOSITION / COMPOSIZIONE  
 82% Wool  
 12% Rami  
 6% Polyamide

• APPROVED / OMOLOGATO



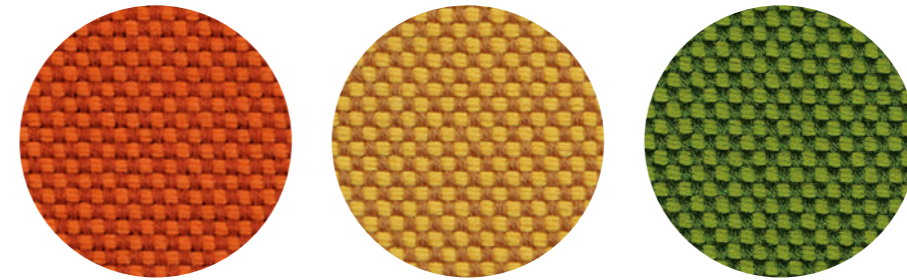
• WEIGHT / GRAMMATURA  
 570 g/m<sup>2</sup> (16.81 oz/yd<sup>2</sup>)

• ABRASION / ABRASIONE  
 100.000 cycles, Martindale (EN ISO 12947-2)

• RUBBING FASTNESS / SOLIDITÀ ALLO SFREGAMENTO  
 Dry 4 and Wet 3-4, scale 1-5  
 (ISO 105-X12)

• LIGHT FASTNESS / SOLIDITÀ ALLA LUCE  
 5-7, scale 1-8 (ISO 105-B02)

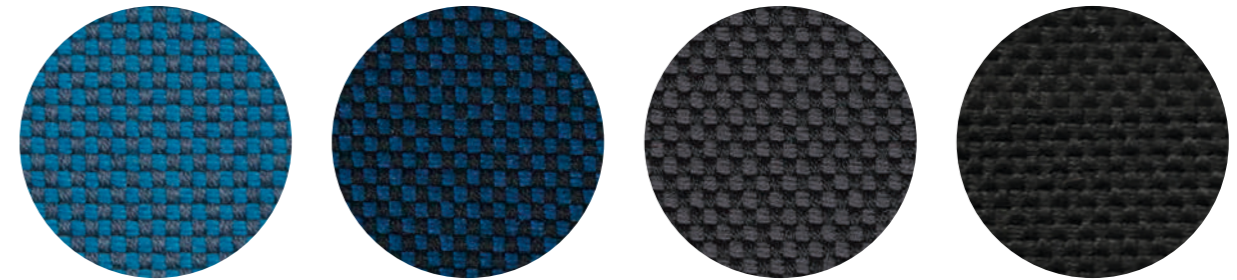
• FLAME RESISTANCE / RESISTENZA AL FUOCO  
 BS 5852 Crib 5  
 EN 1021 - 1/2  
 IMO FTP Code 2010: Part 8  
 UNI 9175 Classe 1 IM  
 US CA TB 117-2013 - Compliant to  
 the criteria certifying the absence of  
 flame retardant chemicals (AB 2998)



G 170

G 171

G 172

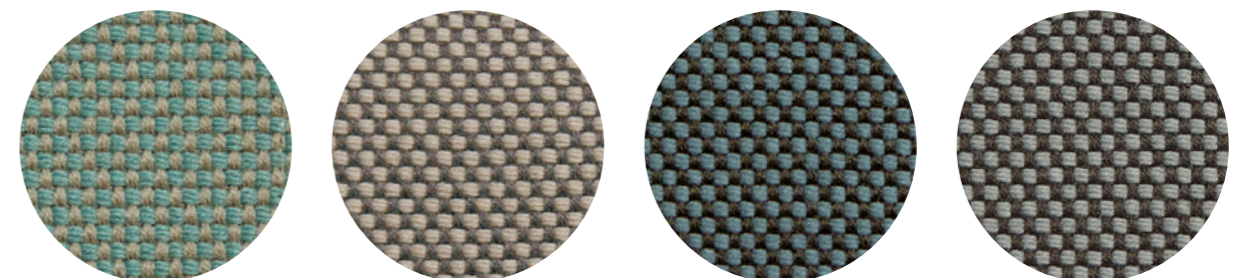


G 173

G 174

G 175

G 176



G 210

G 211

G 212

G 213

technical specifications / specifiche tecniche



• COMPOSITION / COMPOSIZIONE  
 96% Virgin Wool  
 4% Polyamide

• WEIGHT / GRAMMATURA  
 660 g/m<sup>2</sup> (19.47 oz/yd<sup>2</sup>)

• APPROVED / OMOLOGATO



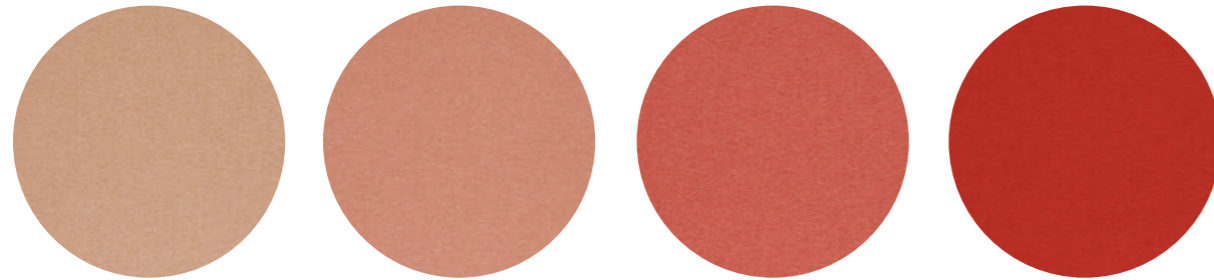
• ABRASION / ABRASIONE  
 90.000 cycles, Martindale  
 (EN ISO 12947-2)

• PILLING  
 4-5, scale 1-5 (EN ISO 12945-2)

• LIGHT FASTNESS / SOLIDITÀ ALLA LUCE  
 5, scale 1-8 (ISO 105-B02)

• SOUND ABSORPTION / ASSORBIMENTO ACUSTICO  
 folded:  $\alpha_w = 0.95$  Class A (ISO 11654)

• FLAME RESISTANCE / RESISTENZA AL FUOCO  
 BS 5852 Part 1  
 DIN 4102-1 B2 with treatment  
 EN 13501-1 with treatment  
 EN 1021 - 1/2  
 FAR 25.853 (12 sec. vertical) with  
 treatment  
 IMO: 2014/90/EU (MED)  
 UNI 9175 Classe 1 IM  
 US CA TB 117-2013 - Compliant  
 to the criteria certifying the  
 absence of flame retardant  
 chemicals (AB 2998)

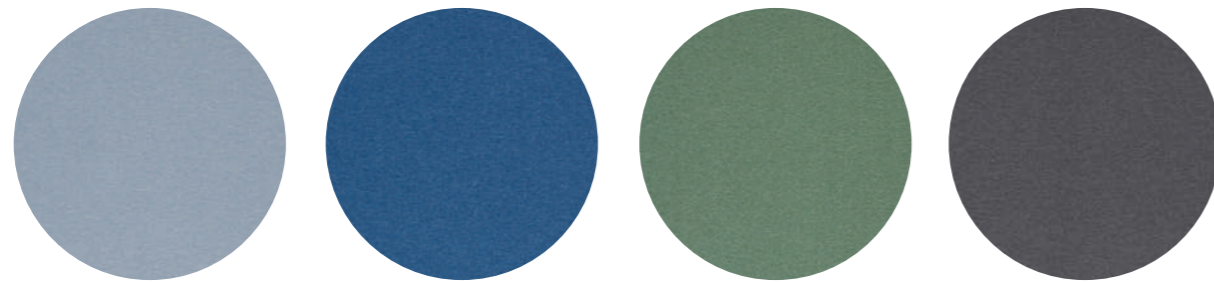


G 163

G 160

G 161

G 162

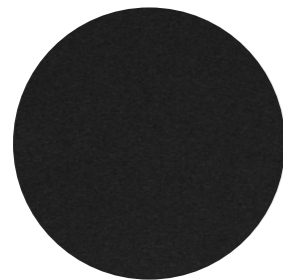


G 159

G 166

G 167

G 168



G 169

• APPROVED / OMOLOGATO



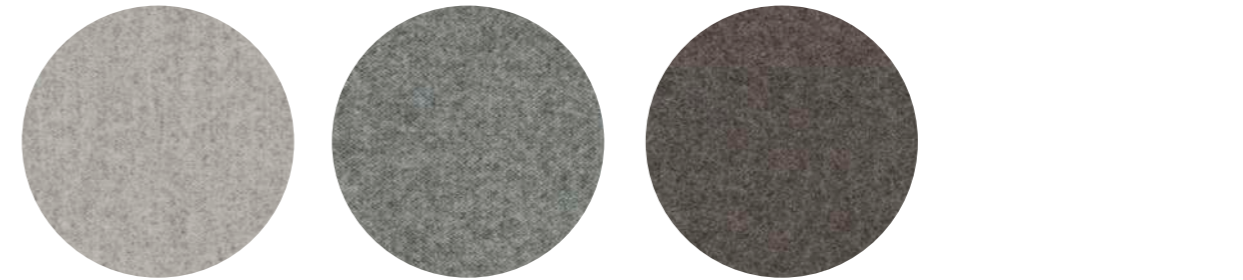
technical specifications / specifiche tecniche



- COLLECTION / COLLEZIONE  
**kvadrat** - HERO  
DESIGNER Patricia Urquiola
- COMPOSITION / COMPOSIZIONE  
97% New wool  
3% Recycled nylon
- WEIGHT / GRAMMATURA  
415 g/m<sup>2</sup> (12.21 oz/yd<sup>2</sup>)
- ABRASION / ABRASIONE  
45.000 cycles, Martindale  
(EN ISO 12947)

- RUBBING FASTNESS / SOLIDITÀ ALLO SFREGAMENTO  
Dry and Wet 4-5, scale 1-5  
(ISO 105-X12)
- PILLING  
3-4, scale 1-5 (EN ISO 12945)
- LIGHT FASTNESS / SOLIDITÀ ALLA LUCE  
6, scale 1-8 (ISO 105-B02)
- SOUND ABSORPTION / ASSORBIMENTO ACUSTICO  
folded:  $\alpha_w = 0.80$  Class B (EN ISO 354)
- FLAME RESISTANCE / RESISTENZA AL FUOCO  
AS/NZS 3837 Class 2  
ASTM E84 Class A Adhered  
ASTM E84 Class A Unadhered  
BS 5852 Part 1

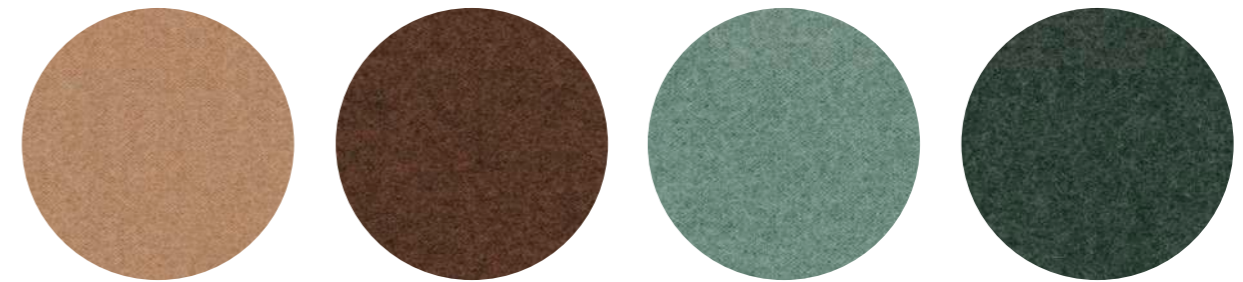
EN 1021 - 1/2  
EN 13773 Class 1 with treatment  
IMO FTP Code 2010: Part 8  
NF D60-013  
NFPA 701 with treatment  
SN 198 898 5.3 with treatment  
UNI 9175 Classe 1 IM  
US CA TB 117-2013  
NF D60-013  
SN 198 898 5.3 with treatment  
UNI 9175 Classe 1 IM  
US CA TB 117-2013 - Compliant to  
the criteria certifying the absence of  
flame retardant chemicals (AB 2998)



G 250

G 251

G 252

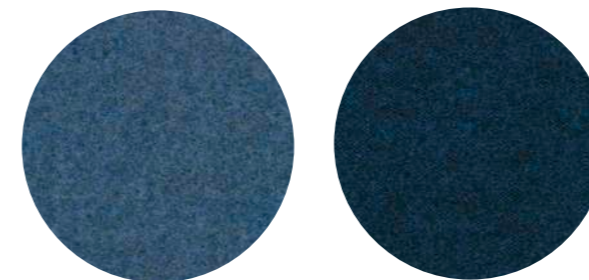


G 253

G 254

G 255

G 256



G 257

G 258

• APPROVED / OMOLOGATO



technical specifications / specifiche tecniche



- COLLECTION / COLLEZIONE  
**kvadrat** - HERO  
DESIGNER Patricia Urquiola
- COMPOSITION / COMPOSIZIONE  
97% New wool  
3% Recycled nylon
- WEIGHT / GRAMMATURA  
400 g/m<sup>2</sup> (11.80 oz/yd<sup>2</sup>)
- ABRASION / ABRASIONE  
45.000 cycles, Martindale  
(EN ISO 12947)

- RUBBING FASTNESS / SOLIDITÀ ALLO SFREGAMENTO  
Dry and Wet 4-5, scale 1-5  
(ISO 105-X12)
- PILLING  
3-4, scale 1-5 (EN ISO 12945)
- LIGHT FASTNESS / SOLIDITÀ ALLA LUCE  
6, scale 1-8 (ISO 105-B02)
- SOUND ABSORPTION / ASSORBIMENTO ACUSTICO  
folded:  $\alpha_w = 0.80$  Class B (EN ISO 354)
- FLAME RESISTANCE / RESISTENZA AL FUOCO  
AS/NZS 3837 Class 1  
ASTM E84 Class A Adhered

ASTM E84 Class A Unadhered  
BS 5852 Part 1  
EN 1021 - 1/2  
EN 13773 Class 1 with treatment  
IMO FTP Code 2010: Part 8  
NF D60-013  
NFPA 701 with treatment  
ÖNORM B1/Q1  
SN 198 898 5.3 with treatment  
UNI 9175 Classe 1 IM  
US CA TB 117-2013 - Compliant to  
the criteria certifying the absence of  
flame retardant chemicals (AB 2998)



G 114

technical specifications / specifiche tecniche

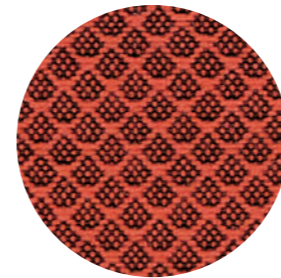


- COLLECTION / COLLEZIONE  
**kvadrat**-DIVINA MD  
DESIGNER Finn Sködt
- COMPOSITION / COMPOSIZIONE  
100% New Wool
- WEIGHT / GRAMMATURA  
560 g/m<sup>2</sup> (16.52 oz/yd<sup>2</sup>)
- ABRASION / ABRASIONE  
45.000 cycles, Martindale  
(EN ISO 12947)
- PILLING  
3, scale 1-5 (EN ISO 12945)

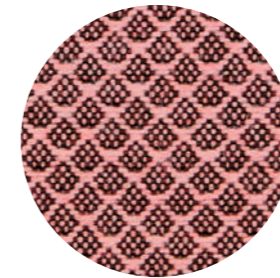
- LIGHT FASTNESS / SOLIDITÀ ALLA LUCE  
5-6, scale 1-8 (ISO 105-B02)
- SOUND ABSORPTION / ASSORBIMENTO ACUSTICO  
folded:  $\alpha_w = 0.70$  Class C (EN ISO 354)
- FLAME RESISTANCE / RESISTENZA AL FUOCO  
AS/NZS 1530.3  
ASTM E84 Class A Adhered  
ASTM E84 Class A Unadhered with  
treatment  
ASTM E84 Class B Unadhered  
BS 5852 Part 1  
BS 5867 Part 2 type B  
EN 1021 - 1/2

EN 13501, B-s2, d0, with treatment  
IMO FTP Code 2010: Part 8  
NF D60-013  
NFPA 260  
NFPA 701 with treatment  
ÖNORM B1/Q1  
JIS L 1091 A-1 D  
CAN ULC S109 with treatment  
SN 198 898 5.3 with treatment  
UNI 9175 Classe 1 IM  
US CA TB 117-2013 - Compliant to  
the criteria certifying the absence of  
flame retardant chemicals (AB 2998)

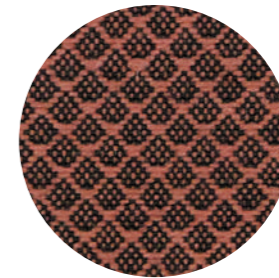
- APPROVED / OMOLOGATO



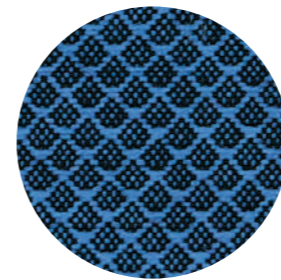
G 200



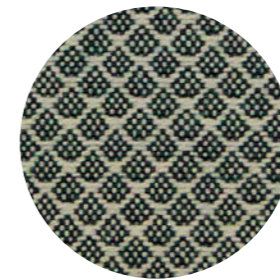
G 201



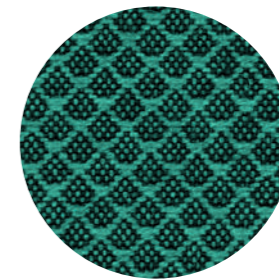
G 202



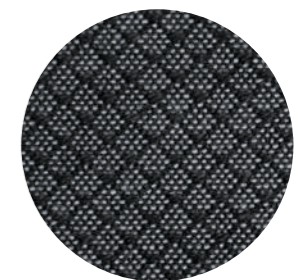
G 203



G 204



G 205



G 206

technical specifications / specifiche tecniche



- COLLECTION / COLLEZIONE  
**kvadrat** - JAALI  
DESIGNER Doshi Levien
- COMPOSITION / COMPOSIZIONE  
92% New wool  
8% Nylon
- WEIGHT / GRAMMATURA  
370 g/m<sup>2</sup> (10.91 oz/yd<sup>2</sup>)
- ABRASION / ABRASIONE  
80.000 cycles, Martindale  
(EN ISO 12947)

- RUBBING FASTNESS / SOLIDITÀ ALLO SFREGAMENTO  
Dry and Wet 5, scale 1-5  
(ISO 105-X12)
- PILLING  
4, scale 1-5 (EN ISO 12945)
- LIGHT FASTNESS / SOLIDITÀ ALLA LUCE  
6-7, scale 1-8 (ISO 105-B02)
- FLAME RESISTANCE / RESISTENZA AL FUOCO  
AS/NZS 1530.3  
AS/NZS 3837 Class 2

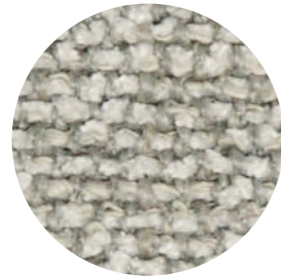
BS 5852 Part 1  
EN 1021 - 1/2  
IMO FTP Code 2010: Part 8  
NF D60-013  
SN 198 898 5.3 with treatment  
UNI 9175 Classe 1 IM  
US CA TB 117-2013 - Compliant  
to the criteria certifying the  
absence of flame retardant  
chemicals (AB 2998)

- APPROVED / OMOLOGATO

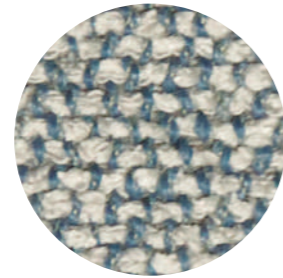




G 225



G 220



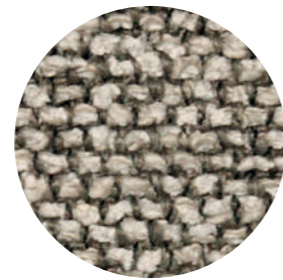
G 221



G 222



G 223



G 224

technical specifications / specifiche tecniche

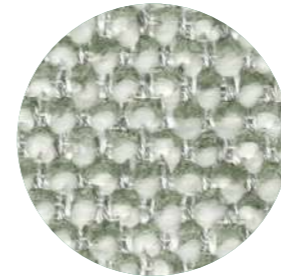


- COLLECTION / COLLEZIONE  
**kvadrat-SAHCO**  
MOSS  
DESIGNER Vincent Van Duysen
- COMPOSITION / COMPOSIZIONE  
52% Cotton  
22% Viscose  
14% Polyacrylic  
6% Linen  
3% Polyester  
3% Nylon

- WEIGHT / GRAMMATURA  
745 g/m<sup>2</sup> (21.97 oz/yd<sup>2</sup>)
- ABRASION / ABRASIONE  
50.000 cycles, Martindale  
(EN ISO 12947)
- RUBBING FASTNESS /  
SOLIDITÀ ALLO SFREGAMENTO  
Dry and Wet 4-5, scale 1-5  
(ISO 105-X12)
- PILLING  
4-5, scale 1-5 (EN ISO 12945)

- LIGHT FASTNESS / SOLIDITÀ ALLA LUCE  
6, scale 1-8 (ISO 105-B02)
- FLAME RESISTANCE / RESISTENZA AL FUOCO  
AS/NZS 3837 Class 2  
BS 5852 Part 1  
EN 1021 - 1/2  
IMO FTP Code 2010: Part 8  
US CA TB 117-2013 - Compliant to  
the criteria certifying the absence of  
flame retardant chemicals (AB 2998)

- APPROVED / OMOLOGATO



G 240



G 241



G 242



G 243



G 244

technical specifications / specifiche tecniche



- COLLECTION / COLLEZIONE  
**kvadrat-SAHCO**  
SAFIRE
- COMPOSITION / COMPOSIZIONE  
43% Viscose  
17% Polyacrylic  
15% New wool  
9% Cotton  
8% Polyester  
8% Linen

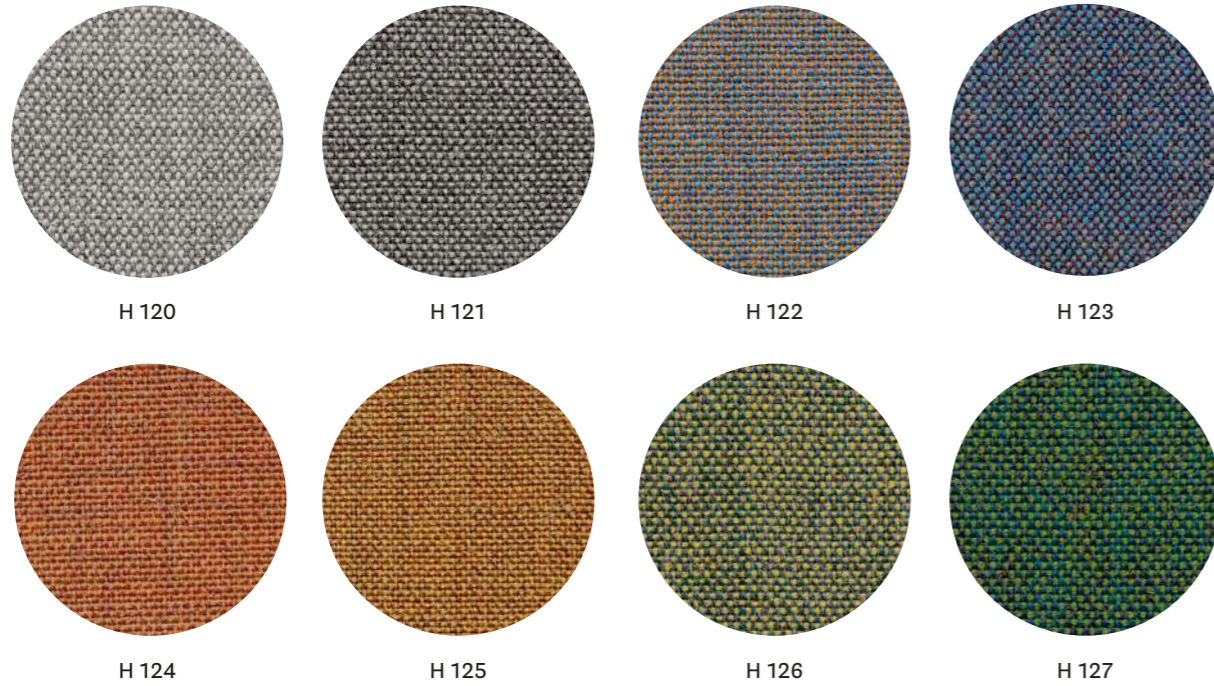
- WEIGHT / GRAMMATURA  
720 g/m<sup>2</sup> (21.23 oz/yd<sup>2</sup>)
- ABRASION / ABRASIONE  
40.000 cycles, Martindale  
(EN ISO 12947)
- RUBBING FASTNESS /  
SOLIDITÀ ALLO SFREGAMENTO  
Dry and Wet 4-5, scale 1-5  
(ISO 105-X12)
- PILLING  
3, scale 1-5 (EN ISO 12945)

- LIGHT FASTNESS / SOLIDITÀ ALLA LUCE  
5-6, scale 1-8 (ISO 105-B02)
- FLAME RESISTANCE / RESISTENZA AL FUOCO  
AS/NZS 3837 Class 2  
BS 5852 Part 1  
EN 1021 - 1/2  
IMO FTP Code 2010: Part 8  
US CA TB 117-2013 - Compliant to  
the criteria certifying the absence of  
flame retardant chemicals (AB 2998)

- APPROVED / OMOLOGATO



CATEGORY H / CATEGORIA H



CATEGORY H / CATEGORIA H



technical specifications / specifiche tecniche



- COLLECTION / COLLEZIONE  
**kvadrat**  
REMIX 3  
DESIGNER Giulio Ridolfo
- COMPOSITION / COMPOSIZIONE  
90% New Wool  
10% Nylon
- WEIGHT / GRAMMATURA  
300 g/m<sup>2</sup> (8.85 oz/yd<sup>2</sup>)
- ABRASION / ABRASIONE  
100.000 cycles, Martindale  
(EN ISO 12947)

- RUBBING FASTNESS /  
SOLIDITÀ ALLO SFREGAMENTO  
Dry and Wet 4, scale 1-5 (ISO 105-X12)
- PILLING  
4, scale 1-5 (EN ISO 12945)
- LIGHT FASTNESS / SOLIDITÀ ALLA LUCE  
6, scale 1-8 (ISO 105-B02)
- SOUND ABSORPTION / ASSORBIMENTO ACUSTICO  
folded:  $\alpha_w=0.80$  Class B (EN ISO 354)
- FLAME RESISTANCE / RESISTENZA AL FUOCO  
AS/NZS 1530.3  
AS/NZS 3837 Class 2  
ASTM E84 Class A Adhered  
ASTM E84 Class A Unadhered

BS 5852 Part 1  
EN 1021 - 1/2  
EN 13501, B-s2, d0, with treatment  
GB 50222 B1 with treatment  
IMO FTP Code 2010: Part 7 with treatment  
IMO FTP Code 2010: Part 8  
NF D60-013  
NFPA 260  
ÖNORM B1/Q1  
SN 198 898 5.3 with treatment  
UNI 9175 Classe 1 IM  
US CA TB 117-2013 - Compliant to the  
criteria certifying the absence of flame  
retardant chemicals (AB 2998)

- APPROVED / OMOLOGATO



technical specifications / specifiche tecniche

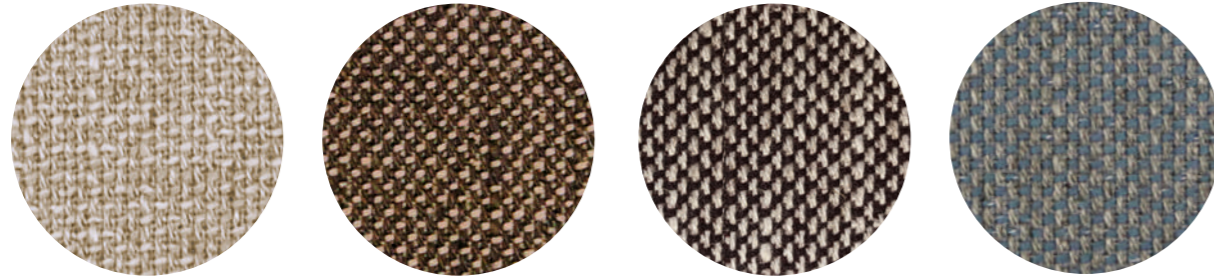


- COMPOSITION / COMPOSIZIONE  
35% Wool  
35% Acrylic  
23% Polyester  
7% Cotton
- WEIGHT / GRAMMATURA  
414 g/m<sup>2</sup> (12.21 oz/yd<sup>2</sup>)

- ABRASION / ABRASIONE  
40.000 cycles, Martindale  
(EN ISO 12947-2)
- RUBBING FASTNESS / SOLIDITÀ ALLO SFREGAMENTO  
Dry 4-5 and Wet 3, scale 1-5  
(ISO 105-X12)
- PILLING  
3-4, scale 1-5  
(EN ISO 12945-2 to 5.000 rubs)

- LIGHT FASTNESS / SOLIDITÀ ALLA LUCE  
5-6, scale 1-8 (ISO 105-B02)
- FLAME RESISTANCE / RESISTENZA AL FUOCO  
EN 1021-1  
BS 5852 Part 1  
US CA TB 117-2013 - Compliant to  
the criteria certifying the absence of  
flame retardant chemicals (AB 2998)



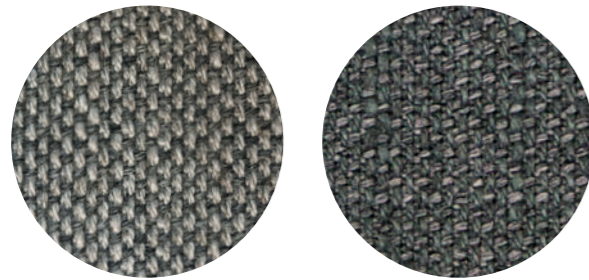


N 06

N 07

N 05

N 08



N 01

N 02

technical specifications / specifiche tecniche



- COLLECTION / COLLEZIONE  
**kvadrat - SUNNIVA**  
DESIGNERS Raf Simons & Fanny Aronsen
- COMPOSITION / COMPOSIZIONE  
58% New wool  
25% Viscose  
8% Linen  
5% Nylon  
4% Polyester
- WEIGHT / GRAMMATURA  
420 g/m<sup>2</sup> (12.39 oz/yd<sup>2</sup>)
- ABRASION / ABRASIONE  
50.000 cycles, Martindale (EN ISO 12947)
- RUBBING FASTNESS / SOLIDITÀ ALLO SFREGAMENTO  
Dry 4-5 and Wet 3-4, scale 1-5 (ISO 105-X12)
- PILLING  
3, scale 1-5 (EN ISO 12945)
- LIGHT FASTNESS / SOLIDITÀ ALLA LUCE  
5, scale 1-8 (ISO 105-B02)
- FLAME RESISTANCE / RESISTENZA AL FUOCO  
AS/NZS 3837 Class 2  
EN 1021 – 1/2  
EN 13501, C-s1, d0, with treatment  
IMO FTP Code 2010: Part 8 with treatment  
NFPA 260  
US CA TB 117-2013 - Compliant to the criteria certifying the absence of flame retardant chemicals (AB 2998)



N 30

N 31

N 32

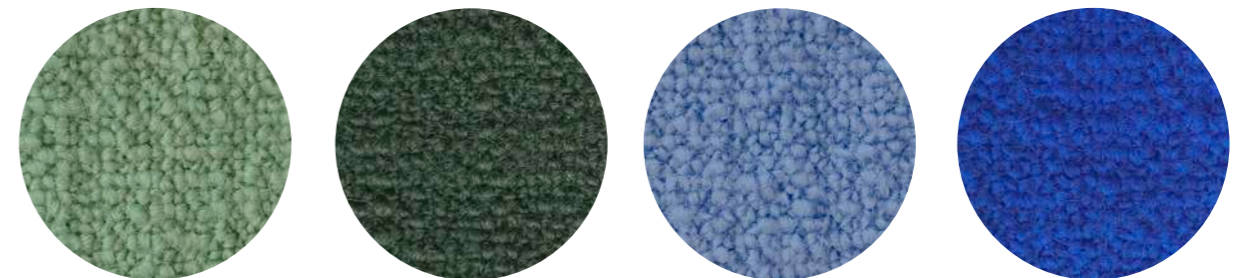


N 33

N 34

N 39

N 35



N 36

N 50

N 37

N 38

technical specifications / specifiche tecniche



- COLLECTION / COLLEZIONE  
**DEDAR**  
A PERFECT FLOWER
- COMPOSITION / COMPOSIZIONE  
65% Wool  
32% Cotton  
3% Polyamide
- WEIGHT / GRAMMATURA  
746 g/m<sup>2</sup> (22.00 oz/yd<sup>2</sup>)
- ABRASION / ABRASIONE  
80.000 cycles, Martindale (EN ISO 12947-2)
- RUBBING FASTNESS / SOLIDITÀ ALLO SFREGAMENTO  
Dry 4-5 and Wet 3-4, scale 1-5 (ISO 105-X12)
- PILLING  
4-5, scale 1-5 (EN ISO 12945 to 5.000 rubs)
- LIGHT FASTNESS / SOLIDITÀ ALLA LUCE  
4-5, scale 1-8 (ISO 105-B02)
- FLAME RESISTANCE / RESISTENZA AL FUOCO  
BS 5852 Part 1  
BS 5852 Crib 5  
EN 1021 – 1/2  
UNI 9175 Classe 1 IM  
US CA TB 117-2013 - Compliant to the criteria certifying the absence of flame retardant chemicals (AB 2998)



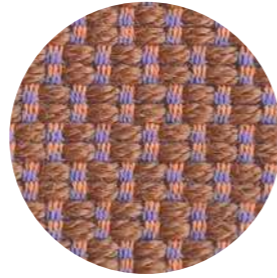
N 60



N 61



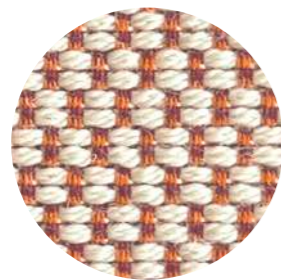
N 62



N 63



N 64



N 65

technical specifications / specifiche tecniche



• COLLECTION / COLLEZIONE

**kvadrat** - SERPENTINE  
DESIGNERS Giulio Ridolfo

• COMPOSITION / COMPOSIZIONE

98% New wool  
2% Nylon

• WEIGHT / GRAMMATURA

607 g/m<sup>2</sup> (17.91 oz/yd<sup>2</sup>)

• ABRASION / ABRASIONE

45.000 cycles, Martindale  
(EN ISO 12947)

• RUBBING FASTNESS /

SOLIDITÀ ALLO SFREGAMENTO  
Dry and Wet 4-5, scale 1-5  
(ISO 105-X12)

• PILLING

3-4, scale 1-5 (EN ISO 12945)

• LIGHT FASTNESS / SOLIDITÀ ALLA LUCE

7, scale 1-8 (ISO 105-B02)

• FLAME RESISTANCE / RESISTENZA AL FUOCO

NF D60-013  
EN 1021 - 1/2  
ASTM E84 Class B Adhered  
ASTM E84 Class B Unadhered  
IMO FTP Code 2010: Part 8  
ÖNORM B2/Q1  
BS 5852 Part 1  
AS/NZS 3837 Class 2  
SN 198 898 5.3 with treatment  
UNI 9175 Classe 1 IM  
US CA TB 117-2013

• APPROVED / OMOLOGATO

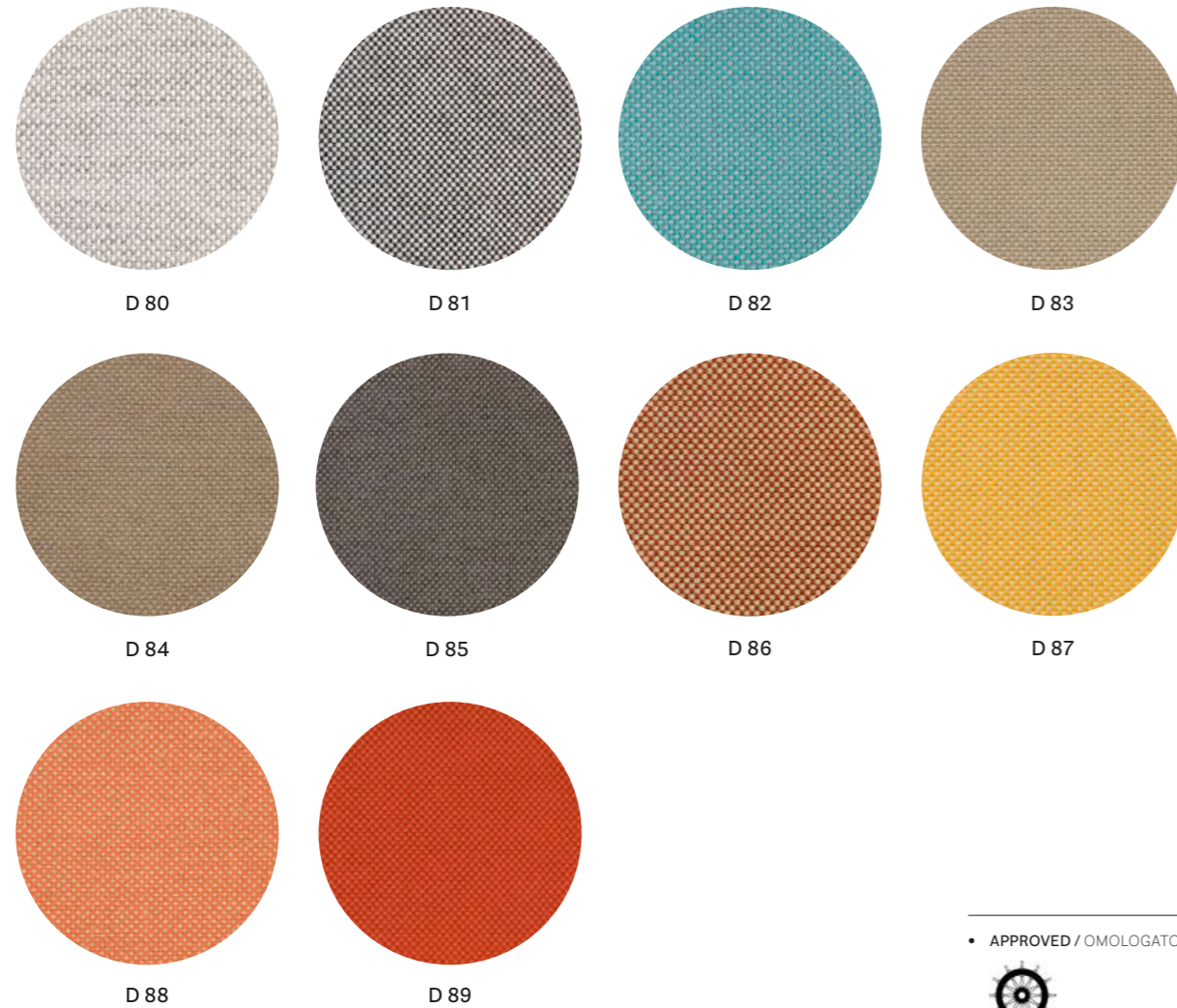


# Fabrics Tessuti

## Outdoor



only for outdoor collections cushions / solo per cuscini delle collezioni outdoor



• APPROVED / OMOLOGATO

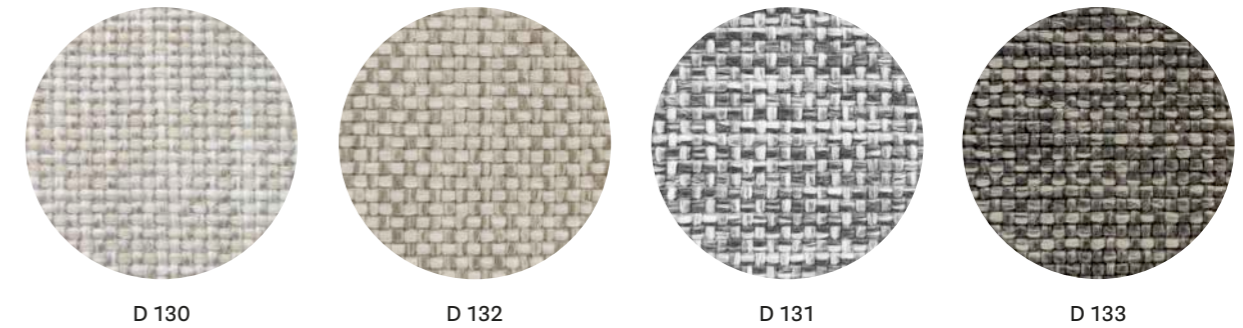


technical specifications / specifiche tecniche

- COLLECTION / COLLEZIONE  
**PEDRALI**  
FLORIDA
- COMPOSITION / COMPOSIZIONE  
100% Acrylic
- WEIGHT / GRAMMATURA  
290 g/m<sup>2</sup> (8.55 oz/yd<sup>2</sup>)
- ABRASION / ABRASIONE  
> 20.000 cycles, Martindale  
(EN ISO 5470-2)
- LIGHT FASTNESS / SOLIDITÀ ALLA LUCE  
8, scale 1-8 (ISO 105-B04)
- WATER FASTNESS / SOLIDITÀ ALL'ACQUA  
8, scale 1-8 (ISO 105-B04)



only for outdoor collections cushions / solo per cuscini delle collezioni outdoor



technical specifications / specifiche tecniche



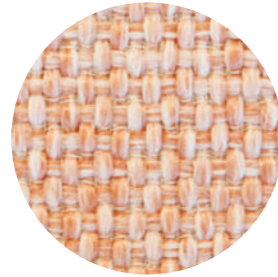
- COMPOSITION / COMPOSIZIONE  
100% Polypropylene
- WEIGHT / GRAMMATURA  
470 g/m<sup>2</sup> (13.86 oz/yd<sup>2</sup>)
- ABRASION / ABRASIONE  
40.000 cycles, Martindale  
(EN ISO 12947-2)
- RUBBING FASTNESS / SOLIDITÀ ALLO SFREGAMENTO
- DRY 4-5 and Wet 4, scale 1-5  
(ISO 105-X12)
- PILLING  
4-5, scale 1-5  
(EN ISO 12945-2 to 5.000 rubs)
- LIGHT FASTNESS / SOLIDITÀ ALLA LUCE  
7-8, scale 1-8  
(ISO 105-B02)
- WATER FASTNESS / SOLIDITÀ ALL'ACQUA
- FLAME RESISTANCE / RESISTENZA AL FUOCO  
7, scale 1-8  
(ISO 105-B04)
- FLAME RESISTANCE / RESISTENZA AL FUOCO  
BS 5852 Part 1  
US CA TB 117-2013 - Compliant to  
the criteria certifying the absence of  
flame retardant chemicals (AB 2998)



only for outdoor collections cushions / solo per cuscini delle collezioni outdoor



D 22



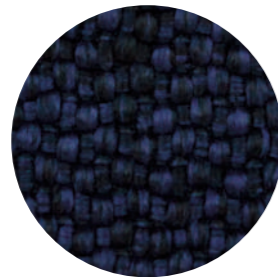
D 23



D 24



D 25



D 26

technical specifications / specifiche tecniche



• COLLECTION / COLLEZIONE

**PEDRALI**

BREZZA

• COMPOSITION / COMPOSIZIONE

100% Polypropylene

• WEIGHT / GRAMMATURA

614 g/m<sup>2</sup> (18.11 oz/yd<sup>2</sup>)

• ABRASION / ABRASIONE

> 30.000 cycles, Martindale

(EN ISO 12947-2)

• RUBBING FASTNESS / SOLIDITÀ ALLO SFREGAMENTO

Dry and Wet 4-5, scale 1-5

(ISO 105-X12)

• PILLING

5, scale 1-5

(ISO 12945-2 to 5.000 cycles)

• LIGHT FASTNESS / SOLIDITÀ ALLA LUCE

7, scale 1-8 (ISO 105-B02)

• WATER FASTNESS / SOLIDITÀ ALL'ACQUA

5, scale 1-5 (ISO 105-E01)

• FLAME RESISTANCE / RESISTENZA AL FUOCO

BS 5852 Part 1

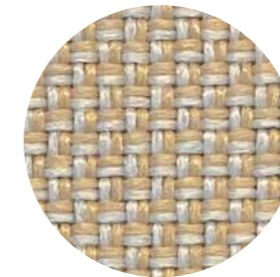
US CA TB 117-2013



only for outdoor collections cushions / solo per cuscini delle collezioni outdoor



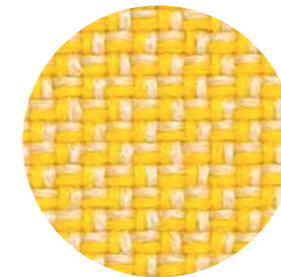
D 100



D 101



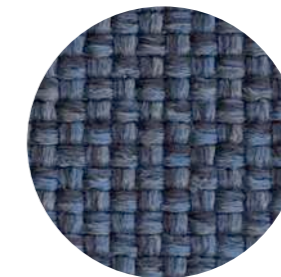
D 105



D 102



D 103



D 104

technical specifications / specifiche tecniche



• COLLECTION / COLLEZIONE

**PEDRALI**

ZEFIRO

• COMPOSITION / COMPOSIZIONE

100% Polypropylene

• WEIGHT / GRAMMATURA

430 g/m<sup>2</sup> (12.68 oz/yd<sup>2</sup>)

• ABRASION / ABRASIONE

50.000 cycles, Martindale

(EN ISO 12947-2)

• RUBBING FASTNESS / SOLIDITÀ ALLO SFREGAMENTO

Dry 4-5 and Wet 4-5, scale 1-5

(ISO 105-X12)

• PILLING

4-5, scale 1-5 (EN ISO 12945-2)

• LIGHT FASTNESS / SOLIDITÀ ALLA LUCE

7, scale 1-8 (ISO 105-B02)

• WATER FASTNESS / SOLIDITÀ ALL'ACQUA

>7, scale 1-8 (ISO 105-B04)

• FLAME RESISTANCE / RESISTENZA AL FUOCO

US CA TB 117-2013 - Compliant to the

criteria certifying the absence of flame

retardant chemicals (AB 2998)



only for outdoor collections cushions / solo per cuscini delle collezioni outdoor



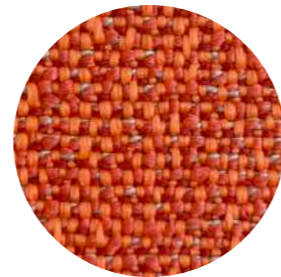
D 140



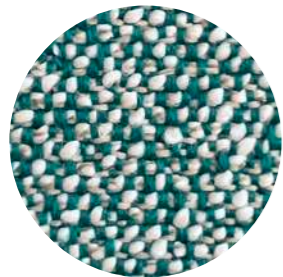
D 141



D 142



D 143



D 144

technical specifications / specifiche tecniche



- COMPOSITION / COMPOSIZIONE  
100% Polypropylene
- WEIGHT / GRAMMATURA  
520 g/m<sup>2</sup> (15.34 oz/yd<sup>2</sup>)
- ABRASION / ABRASIONE  
62.000 cycles, Martindale  
(EN ISO 13936-2)

- PILLING  
4, scale 1-5  
(EN ISO 12945-2 to 5.000 rubs)
- LIGHT FASTNESS / SOLIDITÀ ALLA LUCE  
7, scale 1-8  
(ISO 105-B02)

- WATER FASTNESS / SOLIDITÀ ALL'ACQUA  
7, scale 1-8  
(ISO 105-B04)
- FLAME RESISTANCE / RESISTENZA AL FUOCO  
BS 5852 Part 0,1  
US CA TB 117-2013 - Compliant to  
the criteria certifying the absence of  
flame retardant chemicals (AB 2998)



only for outdoor collections cushions / solo per cuscini delle collezioni outdoor



D 110



D 111



D 112



D 113



D 114



D 115

technical specifications / specifiche tecniche



- COLLECTION / COLLEZIONE  
**PEDRALI**  
SAND
- COMPOSITION / COMPOSIZIONE  
88% Polypropylene  
12% Polyester
- WEIGHT / GRAMMATURA  
470 g/m<sup>2</sup> (13.86 oz/yd<sup>2</sup>)
- ABRASION / ABRASIONE

- RUBBING FASTNESS / SOLIDITÀ ALLO SFREGAMENTO  
Dry 4-5 and Wet 4, scale 1-5  
(ISO 105-X12)
- PILLING  
4, scale 1-5  
(EN ISO 12945-2 to 5.000 rubs)
- LIGHT FASTNESS / SOLIDITÀ ALLA LUCE

- WATER FASTNESS / SOLIDITÀ ALL'ACQUA  
7, scale 1-8  
(ISO 105-B04)
- FLAME RESISTANCE / RESISTENZA AL FUOCO  
BS 5852 Part 1  
US CA TB 117-2013 - Compliant to  
the criteria certifying the absence of  
flame retardant chemicals (AB 2998)



only for outdoor accessory cushions / solo per cuscini accessori outdoor



N 40



N 41



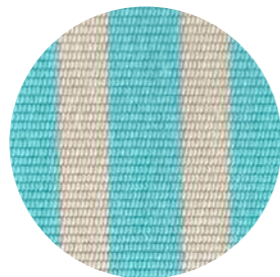
N 42



N 45



N 44



N 43

technical specifications / specifiche tecniche



• COLLECTION / COLLEZIONE

**DEDAR**  
STRANGE LOVES

• COMPOSITION / COMPOSIZIONE

100% Acrylic

• WEIGHT / GRAMMATURA

380 g/m<sup>2</sup> (11.21 oz/yd<sup>2</sup>)

• ABRASION / ABRASIONE

24.000 cycles, Martindale  
(EN ISO 12947-2)

• RUBBING FASTNESS / SOLIDITÀ ALLO SFREGAMENTO

Dry and Wet 4-5, scale 1-5  
(ISO 105-X12)

• PILLING

3-4, scale 1-5  
(EN ISO 12945-2 to 5.000 rubs)

• LIGHT FASTNESS / SOLIDITÀ ALLA LUCE

6-7, scale 1-8  
(ISO 105-B02)

• WATER FASTNESS / SOLIDITÀ ALL'ACQUA

7-8, scale 1-8  
(ISO 105-B04)

• FLAME RESISTANCE / RESISTENZA AL FUOCO

US CA TB 117-2013 - Compliant to the criteria certifying the absence of flame retardant chemicals (AB 2998)

# Simil Leather

## Finta Pelle

CATEGORY A / CATEGORIA A

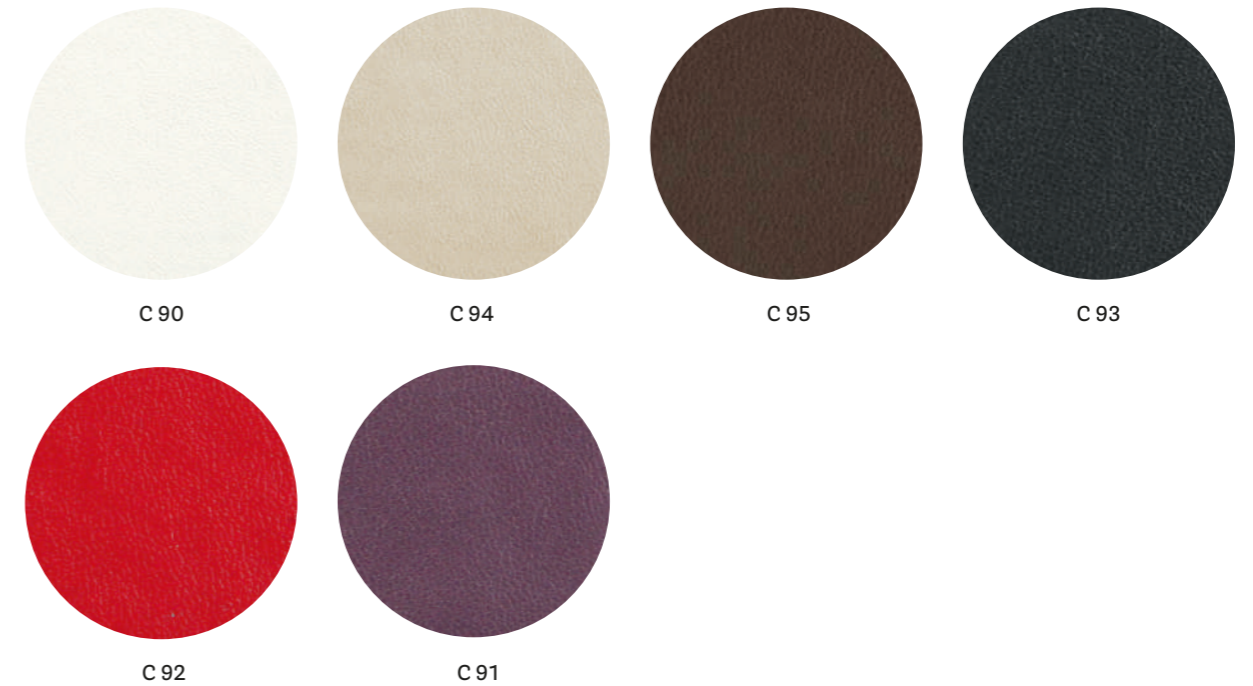


technical specifications / specifiche tecniche



- **COMPOSITION / COMPOSIZIONE**  
85% PVC  
15% Polyester
- **WEIGHT / GRAMMATURA**  
550 g/m<sup>2</sup> (16.22 oz/yd<sup>2</sup>)
- **ABRASION / ABRASIONE**  
50.000 cycles, Martindale  
(EN ISO 12947-2)
- **RUBBING FASTNESS / SOLIDITÀ ALLO SFREGAMENTO**  
Dry and Wet 5, scale 1-5  
(ISO 105-X12)
- **LIGHT FASTNESS / SOLIDITÀ ALLA LUCE**  
6, scale 1-8  
(ISO 105-B02)
- **FLAME RESISTANCE / RESISTENZA AL FUOCO**  
BS 5852 Part 1  
US CA TB 117-2013 - Compliant to  
the criteria certifying the absence of  
flame retardant chemicals (AB 2998)

CATEGORY C / CATEGORIA C



technical specifications / specifiche tecniche



- **COMPOSITION / COMPOSIZIONE**  
72% PVC  
25% Cotton  
3% Polyurethane
- **WEIGHT / GRAMMATURA**  
600 g/m<sup>2</sup> (17.70 oz/yd<sup>2</sup>)
- **ABRASION / ABRASIONE**  
100.000 cycles, Martindale  
(EN ISO 5470-2)
- **RUBBING FASTNESS / SOLIDITÀ ALLO SFREGAMENTO**  
Dry and Wet 5, scale 1-5  
(ISO 105-X12)
- **LIGHT FASTNESS / SOLIDITÀ ALLA LUCE**  
6-7, scale 1-8 (ISO 105-B02)
- **FLAME RESISTANCE / RESISTENZA AL FUOCO**  
BS 5852 Part 1  
EN 1021 - 1/2  
IMO res. A.652 (16)  
UNI 9175 Classe 1 IM  
US CA TB 117-2013



technical specifications / specifiche tecniche



- COMPOSITION / COMPOSIZIONE  
85% PVC  
15% Cotton
- WEIGHT / GRAMMATURA  
830 g/m<sup>2</sup> (24.48 oz/yd<sup>2</sup>)
- ABRASION / ABRASIONE  
150.000 cycles, Martindale  
(EN ISO 5470-2)

- LIGHT FASTNESS / SOLIDITÀ ALLA LUCE  
≥6, scale 1-8 (ISO 105-B02)
- FLAME RESISTANCE / RESISTENZA AL FUOCO  
DIN 4102-1 B2  
BS 5852 Crib 5  
EN 1021 - 1/2  
EN 13501-1, C-s3, d0  
FAR 25.853 App F Part 1

IMO res. A.652  
NF D60-013 AM18  
NF P92 507 M1  
NY/NJ - Port Authority  
UFAC Fabric Class 1  
German fire standard B1  
with treatment  
German fire standard B2  
US CA TB 133  
US CA TB 117-2013

- APPROVED / OMOLOGATO



technical specifications / specifiche tecniche

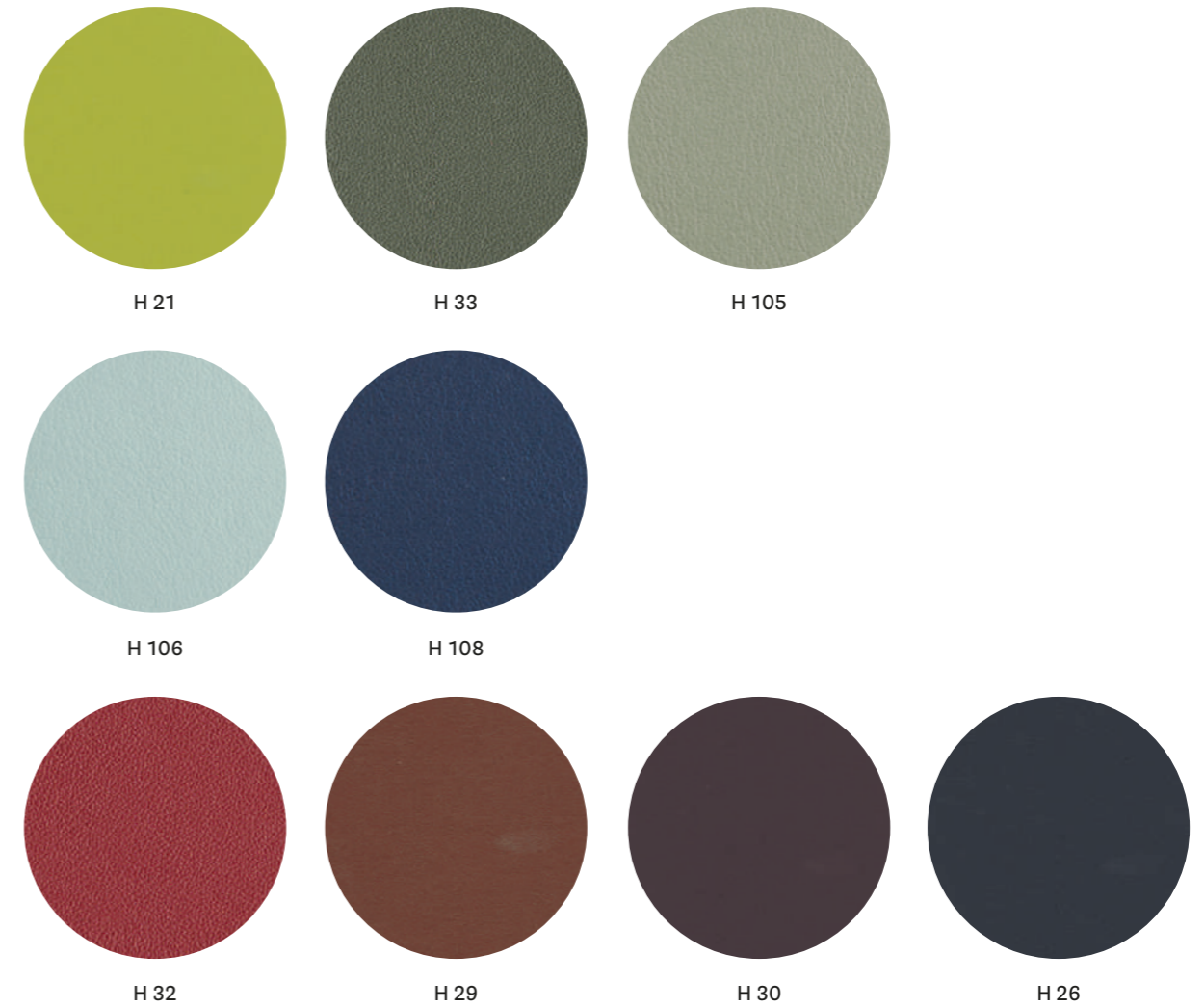


- COMPOSITION / COMPOSIZIONE  
76% PVC  
22% Polyester  
2% Polyurethane
- WEIGHT / GRAMMATURA  
540 g/m<sup>2</sup> (15.93 oz/yd<sup>2</sup>)

- ABRASION / ABRASIONE  
60.000 cycles, Martindale  
(EN ISO 5470-2)
- RUBBING FASTNESS / SOLIDITÀ ALLO SFREGAMENTO  
Dry and Wet 5, scale 1-5  
(ISO 105-X12)

- LIGHT FASTNESS / SOLIDITÀ ALLA LUCE  
6-7, scale 1-8 (ISO 105-B02)
- FLAME RESISTANCE / RESISTENZA AL FUOCO  
BS 5852 Part 1  
EN 1021 - 1/2  
UNI 9175 Classe 1 IM  
US CA TB 117-2013





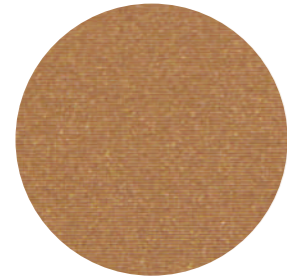
technical specifications / specifiche tecniche



- COMPOSITION / COMPOSIZIONE  
63% Polyurethane  
29% Cotton  
8% Polyester
- WEIGHT / GRAMMATURA  
480 g/m<sup>2</sup> (14.16 oz/yd<sup>2</sup>)

- ABRASION / ABRASIONE  
150.000 cycles, Martindale  
(EN ISO 12947-2)
- LIGHT FASTNESS / SOLIDITÀ ALLA LUCE  
5-6, scale 1-8 (ISO 105-B02)
- FLAME RESISTANCE / RESISTENZA AL FUOCO  
BS 5852 Part 1

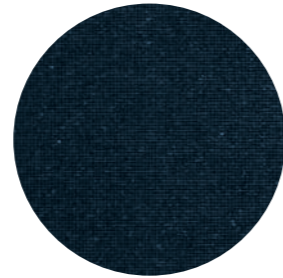
- BS 5852 Crib 5
- EN 1021 - 1/2
- IMO FTP Code 2010
- ÖNORM B 3825
- UNI 9175 Classe 1 IM
- US CA TB 117-2013 - Compliant to the criteria certifying the absence of flame retardant chemicals (AB 2998)



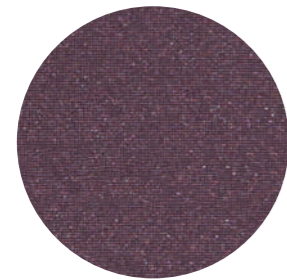
C 62



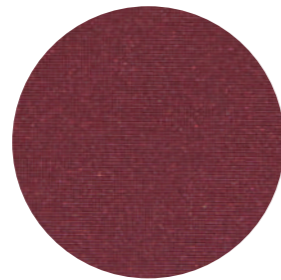
C 63



C 64



C 60



C 61

technical specifications / specifiche tecniche



- **Metallic effect simil-leather**  
Finta pelle effetto metallizzato

- **COMPOSITION / COMPOSIZIONE**  
72% PVC  
25% Cotton  
3% Polyurethane

- **WEIGHT / GRAMMATURA**  
600 g/m<sup>2</sup> (17.70 oz/yd<sup>2</sup>)

- **ABRASION / ABRASIONE**  
100.000 cycles, Martindale  
(EN ISO 5470-2)

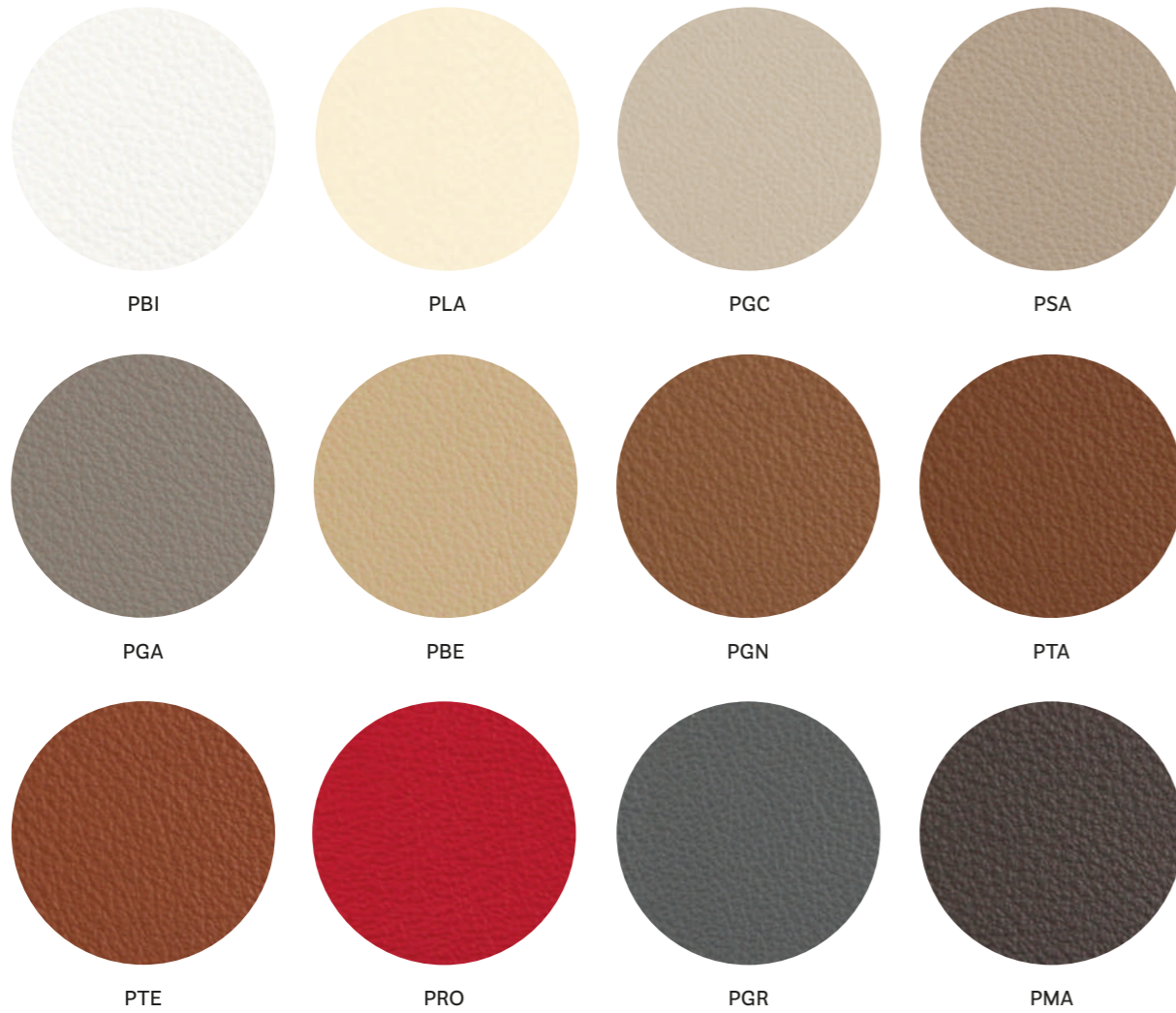
- **RUBBING FASTNESS / SOLIDITÀ ALLO SFREGAMENTO**  
Dry and Wet 5, scale 1-5  
(ISO 105-X12)

- **LIGHT FASTNESS / SOLIDITÀ ALLA LUCE**  
6-7, scale 1-8 (ISO 105-B02)

- **FLAME RESISTANCE / RESISTENZA AL FUOCO**  
BS 5852 Part 1  
EN 1021 – 1/2  
IMO res. A.652 (16)  
UNI 9175 Classe 1 IM  
US CA TB 117-2013

# Leather Pelle

CATEGORY P / CATEGORIA P



PNE

technical specifications / specifiche tecniche

- COLLECTION / COLLEZIONE  
 **LINEA**
- COMPOSITION / COMPOSIZIONE  
**Mid grain leather**  
Pelle mezzo fiore
- WEIGHT / GRAMMATURA  
**0.9-1.1 mm (0.035-0.043 in)**
- RUBBING FASTNESS /  
SOLIDITÀ ALLO SFREGAMENTO  
**Dry (500 Cycles) and  
Wet (250 Cycles) ≥4**  
(EN ISO 11640:1998)

- LIGHT FASTNESS /  
SOLIDITÀ ALLA LUCE  
**≥5 (ISO 105 B02) (MET.5)**
- FLAME RESISTANCE /  
RESISTENZA AL FUOCO  
**BS 5852:1979  
BS EN 1021-1-2:2006  
US CA TB 117-2013 -  
Compliant to the criteria  
certifying the absence  
of flame retardant  
chemicals (AB 2998)**

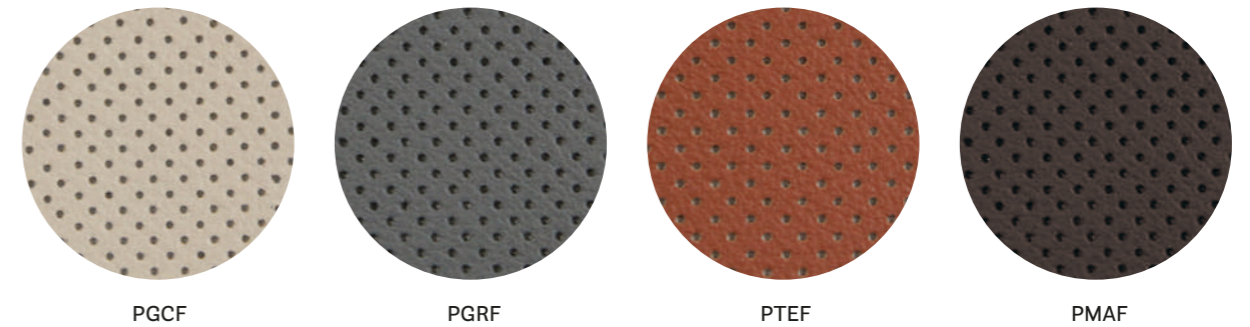
cleaning / lavaggio

Clean with a damp cloth using water. Do not use detergents, solvents, bleached, abrasives.  
Pulire con un panno umido d'acqua. Non usare detersivi, solventi, candeggianti, abrasivi.

- APPROVED / OMOLOGATO



CATEGORY P / CATEGORIA P



technical specifications / specifiche tecniche

- COLLECTION / COLLEZIONE  
 **LINEA**
- COMPOSITION / COMPOSIZIONE  
**Perforated mid grain leather**  
Pelle mezzo fiore traforata
- WEIGHT / GRAMMATURA  
**0.9-1.1 mm (0.035-0.043 in)**
- RUBBING FASTNESS /  
SOLIDITÀ ALLO SFREGAMENTO  
**Dry (500 Cycles) and  
Wet (250 Cycles) ≥4**  
(EN ISO 11640:1998)

- LIGHT FASTNESS /  
SOLIDITÀ ALLA LUCE  
**≥5 (ISO 105 B02) (MET.5)**
- FLAME RESISTANCE /  
RESISTENZA AL FUOCO  
**BS 5852:1979  
BS EN 1021-1-2:2006**

- APPROVED / OMOLOGATO



cleaning / lavaggio

Clean with a damp cloth using water. Do not use detergents, solvents, bleached, abrasives.  
Pulire con un panno umido d'acqua. Non usare detersivi, solventi, candeggianti, abrasivi.

only for collections / solo per collezioni



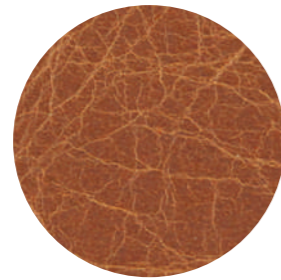
Vic / Vic Metal

Inner part of the back, upper part of the seat.  
Lato interno dello schienale e parte superiore del sedile.

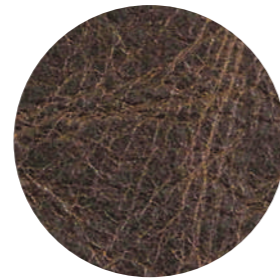
CATEGORY P / CATEGORIA P



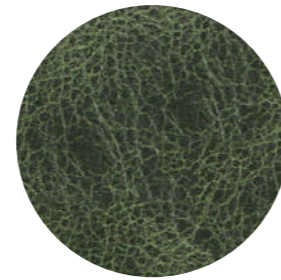
PBS



PCO



PMS



PVE

technical specifications / specifiche tecniche

• COLLECTION / COLLEZIONE



• COMPOSITION / COMPOSIZIONE

**Vintage mid grain leather**  
Pelle mezzo fiore anticata

• **Leather non-homogenous shade (vintage effect)**

Pelle in tonalità non omogenea (effetto vintage)

• WEIGHT / GRAMMATURA

**0.8-1.0 mm (0.031-0.039 in)**

• RUBBING FASTNESS / SOLIDITÀ ALLO SFREGAMENTO

**Dry (50 Cycles) and Wet (20 Cycles) ≥3 (EN ISO 11640:1998)**

• LIGHT FASTNESS / SOLIDITÀ ALLA LUCE

**≥3 (ISO 105-B02) (MET.5)**

• FLAME RESISTANCE / RESISTENZA AL FUOCO

**BS 5852:1979  
BS EN 1021-1-2:2006**

cleaning / lavaggio

**Clean with warm and damp cloth. Do not use detergents, solvents, bleached, abrasives.**

Pulire con acqua calda e un panno umido. Non usare detersivi, solventi, candeggianti, abrasivi.

only for collections / solo per collezioni



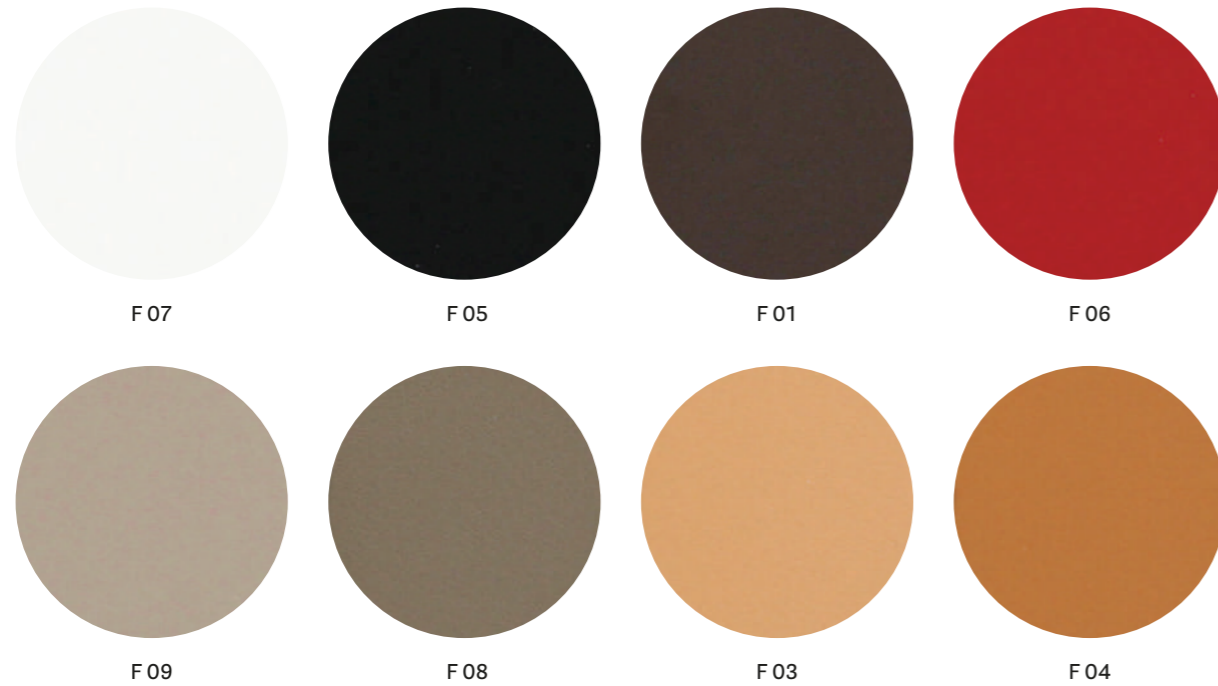
Malmö

Inga

# Hard leather

## Cuoio

CATEGORY F / CATEGORIA F



technical specifications / specifiche tecniche

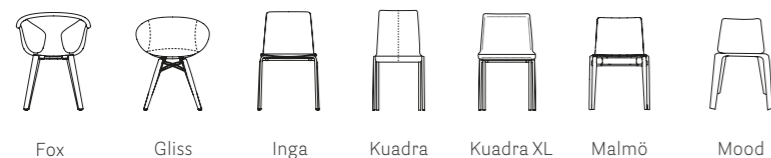
- **COMPOSITION / COMPOSIZIONE**  
Genuine hard leather, tanned with vegetable substances.  
Cuoio naturale, conciato con sostanze vegetali.
- **WEIGHT / GRAMMATURA**  
2 mm (0.079 in)

- **RUBBING FASTNESS / SOLIDITÀ ALLO SFREGAMENTO**  
Satisfactory up to maximum 700 abrasions in humid environment and 1000 abrasions in dry environment.  
Soddisfacente sino a max 700 abrasioni all'umido e 1000 abrasioni al secco.

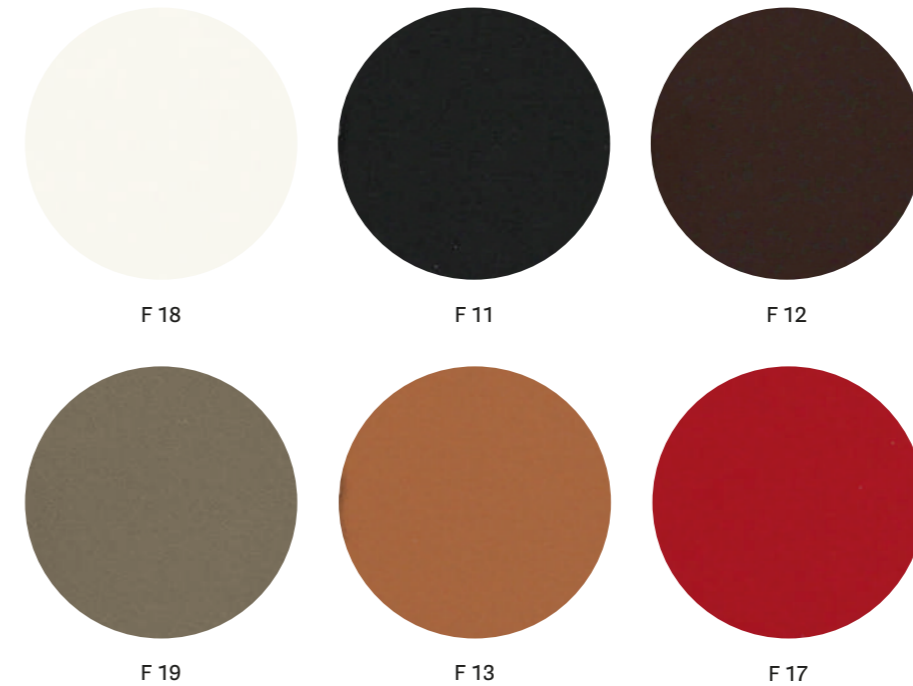
cleaning / lavaggio

Clean with a damp cloth using water.  
Pulire con un panno umido d'acqua.

only for collections / solo per collezioni



CATEGORY F / CATEGORIA F



technical specifications / specifiche tecniche

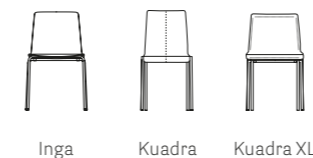
- **COMPOSITION / COMPOSIZIONE**  
Regenerated hard leather. Tanned leather cuttings and shavings linked with natural rubber latex.  
Cuoio rigenerato. Ritagli e rasatura di cuoio conciato legati con lattice di gomma naturale.
- **WEIGHT / GRAMMATURA**  
2 mm (0.079 in)

- **RUBBING FASTNESS / SOLIDITÀ ALLO SFREGAMENTO**  
Dry and wet >1000 (UNI EN ISO 11640)
- **LIGHT FASTNESS / SOLIDITÀ ALLA LUCE**  
4-5 Xenotest Method
- **FLAME RESISTANCE / RESISTENZA AL FUOCO**  
BS EN 1021 1&2  
BS 5852 Part 1  
US CA TB 117 E Part 1

cleaning / lavaggio

Clean with a damp cloth using water.  
Pulire con un panno umido d'acqua.

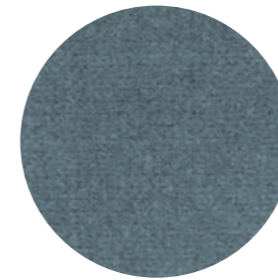
only for collections / solo per collezioni



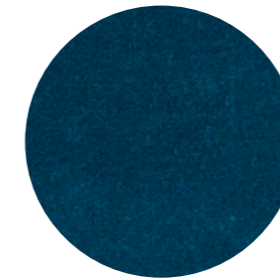
# Velvet

## Velluto

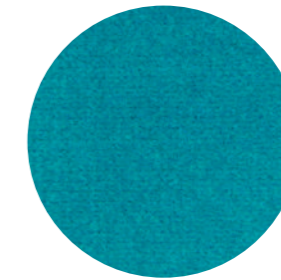
CATEGORY E / CATEGORIA E



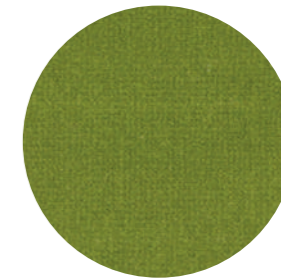
E 04



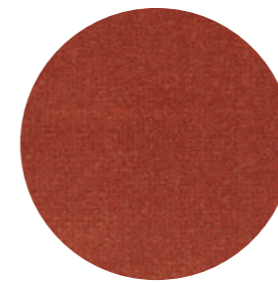
E 03



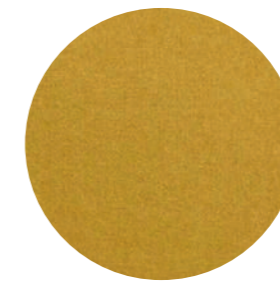
E 05



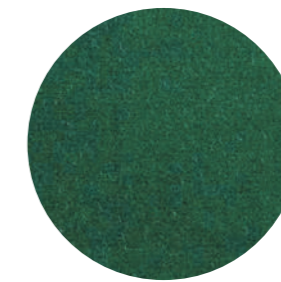
E 02



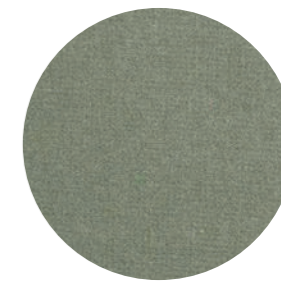
E 01



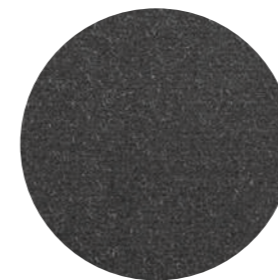
E 06



E 07



E 08



E 09

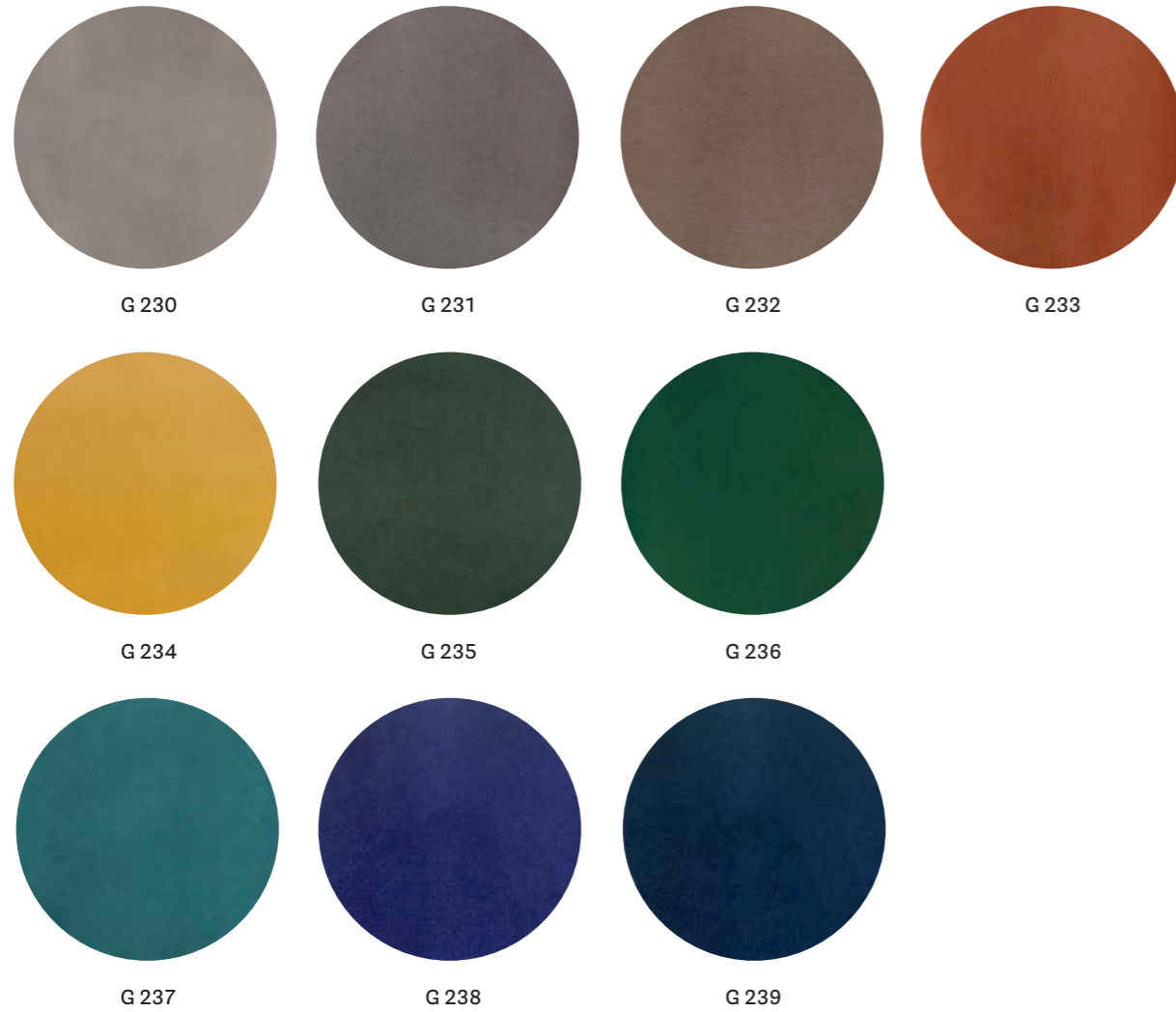
technical specifications / specifiche tecniche



- COLLECTION / COLLEZIONE  
**DEDAR**  
ADAMO & EVA
- COMPOSITION / COMPOSIZIONE  
100% Cotton

- WEIGHT / GRAMMATURA  
450 g/m<sup>2</sup> (13.27 oz/yd<sup>2</sup>)
- ABRASION / ABRASIONE  
50.000 cycles, Martindale (EN ISO 12947-2)
- RUBBING FASTNESS / SOLIDITÀ ALLO SFREGAMENTO

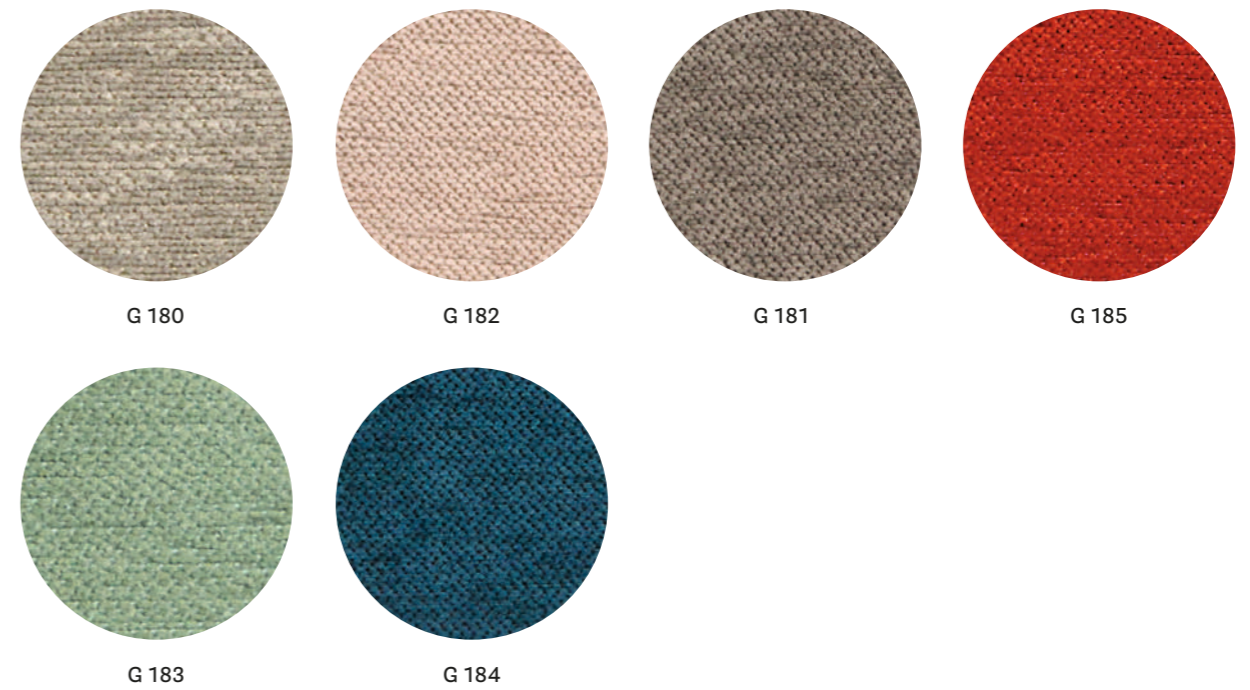
- Dry 4-5 and Wet 3-5, scale 1-5 (ISO 105-X12)
- LIGHT FASTNESS / SOLIDITÀ ALLA LUCE  
4-6, scale 1-8 (ISO 105-B02)
- FLAME RESISTANCE / RESISTENZA AL FUOCO  
BS 5852 Part 1



technical specifications / specifiche tecniche



- COMPOSITION / COMPOSIZIONE  
100% Cotton
- WEIGHT / GRAMMATURA  
540 g/m<sup>2</sup> (15.93 oz/yd<sup>2</sup>)
- ABRASION / ABRASIONE  
70.000 cycles,  
Martindale (EN ISO 12947-2)
- RUBBING FASTNESS / SOLIDITÀ ALLO SFREGAMENTO  
Dry and Wet 4-5, scale 1-5  
(ISO 105-X12)
- PILLING  
5, scale 1-5 (EN ISO 12945-2)
- LIGHT FASTNESS / SOLIDITÀ ALLA LUCE  
4-5, scale 1-8 (ISO 105-B02)
- SOUND ABSORPTION /  
ASSORBIMENTO ACUSTICO  
folded:  $\alpha_w = 0.75$  (EN ISO 354)
- FLAME RESISTANCE / RESISTENZA AL FUOCO  
BS 5852 Part 1  
US CA TB 117-2013 - Compliant to  
the criteria certifying the absence of  
flame retardant chemicals (AB 2998)



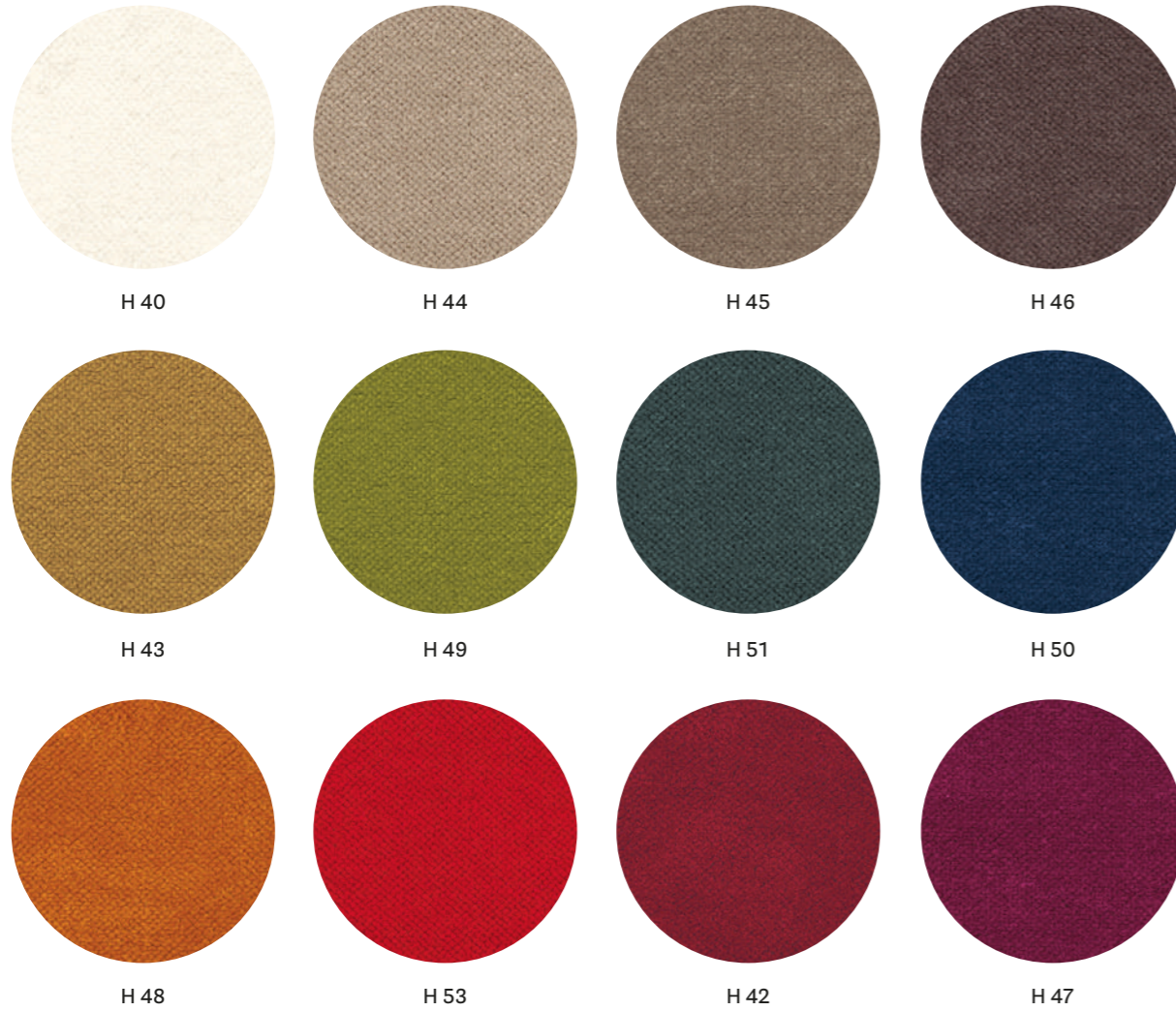
technical specifications / specifiche tecniche



- COLLECTION / COLLEZIONE  
**kvadrat - STILL**  
DESIGNER Georgina Wright
- COMPOSITION / COMPOSIZIONE  
100% TREVIRA CS®
- WEIGHT / GRAMMATURA  
457 g/m<sup>2</sup> (13.48 oz/yd<sup>2</sup>)
- ABRASION / ABRASIONE  
50.000 cycles, Martindale  
(EN ISO 12947)
- RUBBING FASTNESS / SOLIDITÀ ALLO SFREGAMENTO  
Dry and Wet 4-5, scale 1-5  
(ISO 105-X12)
- PILLING  
4-5, scale 1-5 (EN ISO 12945)
- LIGHT FASTNESS / SOLIDITÀ ALLA LUCE  
6, scale 1-8 (ISO 105-B02)
- SOUND ABSORPTION / ASSORBIMENTO ACUSTICO  
folded:  $\alpha_w = 0.85$  Class B (EN ISO 354)
- FLAME RESISTANCE / RESISTENZA AL FUOCO  
ASTM E84 Class A Unadhered  
AS/NZS 3837 Class 1  
BS 5852 Part 1  
BS 5852 Crib 5  
BS 5867 Part 2 type B  
DIN 4102 B1
- EN 1021 - 1/2  
EN 13501-1, B-s1, d0  
GB 8624 B1  
IMO FTP Code 2010: Part 8  
IMO FTP Code 2010: Part 5  
NF D60-013  
NF P92 507 M1  
ÖNORM B1/Q1  
CAN ULC S102  
SN 198 898 5.2  
UNI 9177 Classe 1  
UNI 9175 Classe 1 IM  
US CA TB 117-2013



CATEGORY H / CATEGORIA H

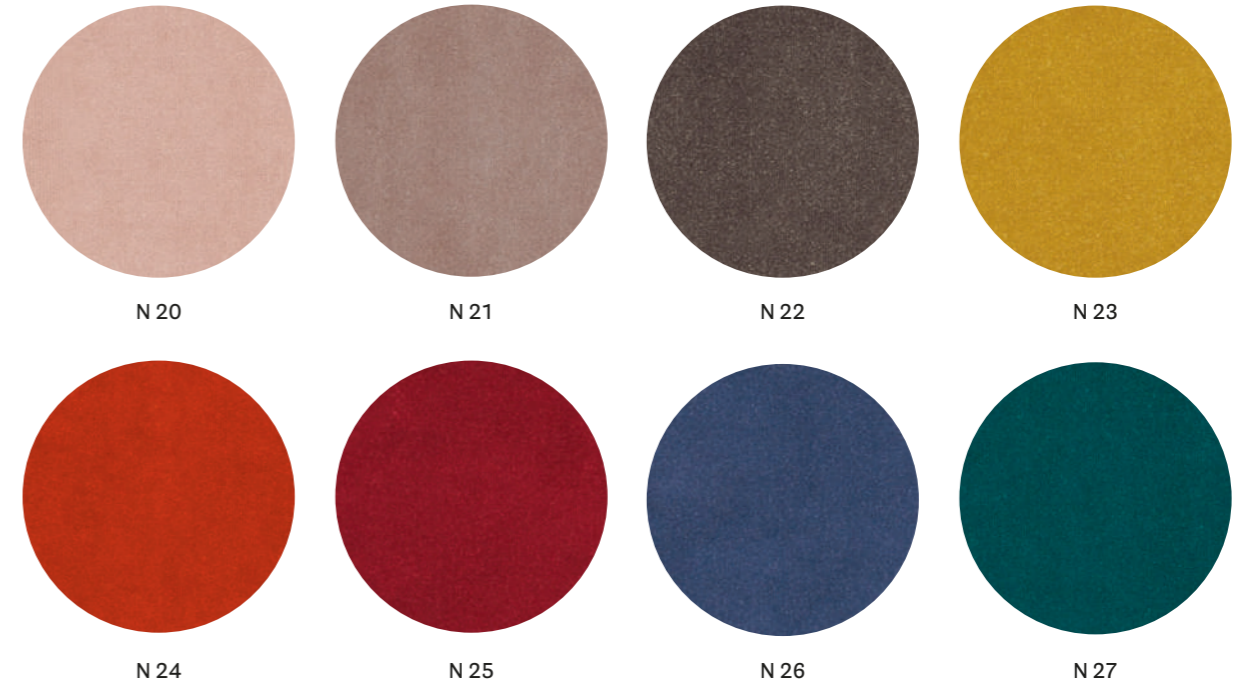


technical specifications / specifiche tecniche



- COMPOSITION / COMPOSIZIONE  
100% TREVIRA CS®
- WEIGHT / GRAMMATURA  
470 g/m<sup>2</sup> (13.86 oz/yd<sup>2</sup>)
- ABRASION / ABRASIONE  
190.000 cycles, Martindale (EN ISO 12947-2)
- RUBBING FASTNESS / SOLIDITÀ ALLO SFREGAMENTO  
Dry and Wet 4-5, scale 1-5 (ISO 105-X12)
- PILLING  
5, scale 1-5 (EN ISO 12945-2)
- LIGHT FASTNESS / SOLIDITÀ ALLA LUCE  
5, scale 1-8 (ISO 105-B02)
- SOUND ABSORPTION / ASSORBIMENTO ACUSTICO  
folded:  $\alpha_w = 0.70$  (EN ISO 354)
- FLAME RESISTANCE / RESISTENZA AL FUOCO  
BS 5852 Part 0,1  
DIN 4102 B1  
EN 1021 - 1/2  
IMO MSC 307(88) Annex 1 Part 7-8  
NF P92 503-507 M1  
NFPA 260  
UNI 9177 Classe 1  
UNI 9175 Classe 1 IM  
US CA TB 117-2013

CATEGORY N / CATEGORIA N



technical specifications / specifiche tecniche



- COLLECTION / COLLEZIONE  
**kvadrat-SAHCO**  
BALBOA
- COMPOSITION / COMPOSIZIONE  
100% Polyester FR
- WEIGHT / GRAMMATURA  
685 g/m<sup>2</sup> (20.20 oz/yd<sup>2</sup>)
- ABRASION / ABRASIONE  
100.000 cycles,  
Martindale (EN ISO 12947)
- RUBBING FASTNESS / SOLIDITÀ ALLO SFREGAMENTO  
Dry 5 and Wet 4-5,  
scale 1-5 (ISO 105-X12)
- PILLING  
4, scale 1-5 (EN ISO 12945)
- LIGHT FASTNESS / SOLIDITÀ ALLA LUCE  
5-6, scale 1-8 (ISO 105-B02)
- SOUND ABSORPTION / ASSORBIMENTO ACUSTICO  
folded:  $\alpha_w = 0.80$  Class B (EN ISO 354)
- FLAME RESISTANCE / RESISTENZA AL FUOCO  
AS/NZS 1530.3  
ASTM E84 Class A Unadhered  
AS/NZS 3837 Class 1  
BS 5852 Crib 5  
BS 5867 Part 2 type B
- DIN 4102 B1  
EN 1021 - 1/2  
EN 13501-1, B-s1, d0  
EN 13773 Class 1  
GB 8624 B1  
IMO FTP Code 2010: Part 8  
NFPA 260  
NFPA 701  
NF P92 507 M1  
CAN ULC S102 S109  
SN 198 898 5.2  
UNI 9175 Classe 1 IM  
US CA TB 117-2013





# Powder coated cast-iron, steel and aluminium

Ghisa, acciaio  
e alluminio verniciati

# Indoor

TEXTURED MATT / GOFFRATA OPACA



**BI100**  
White / Bianco

**BI200**  
White / Bianco

**BE100**  
Beige / Beige

**BE200**  
Beige / Beige



**SA100**  
Sand / Sabbia



**SA200**  
Sand / Sabbia



**RA100**  
Pink / Rosa



**GI100**  
Yellow / Giallo



**AR200**  
Orange / Arancio



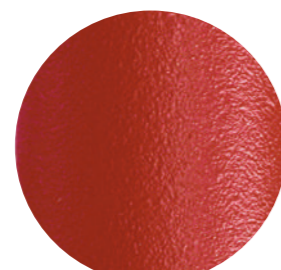
**AR400**  
Orange / Arancio



**AR500**  
Orange / Arancio



**RO400**  
Red / Rosso



**RO200**  
Red / Rosso



**RO300**  
Red / Rosso

TEXTURED MATT / GOFFRATA OPACA



**MI100**  
Honey / Miele



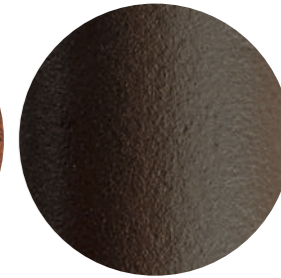
**TE**  
Terracotta / Terracotta



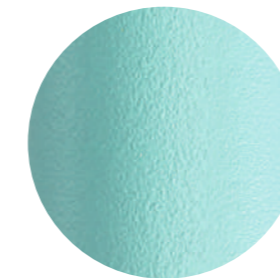
**TE200**  
Terracotta / Terracotta



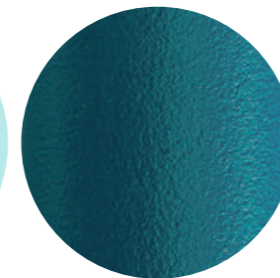
**RU**  
Rust / Ruggine



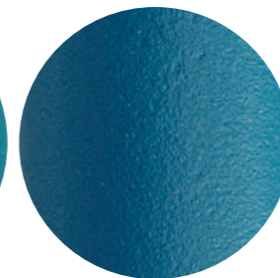
**MG**  
Brown / Marrone



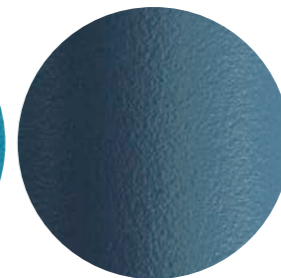
**AZ100**  
Light blue / Azzurro



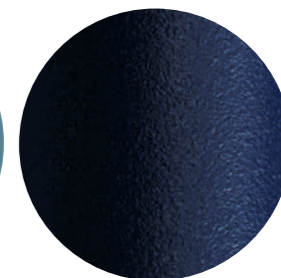
**BL500**  
Blue / Blu



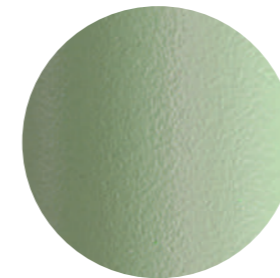
**BL300**  
Blue / Blu



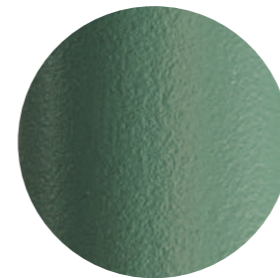
**BL600**  
Blue / Blu



**BL400**  
Blue / Blu



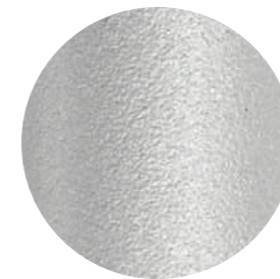
**VE100**  
Sage green / Verde salvia



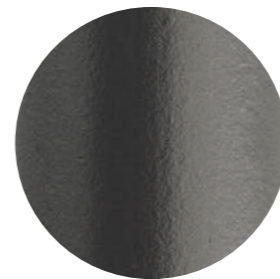
**VE600**  
Green / Verde



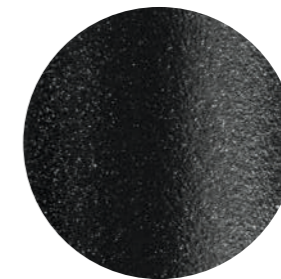
**VE400**  
Green / Verde



**AG**  
Aluminium / Alluminio

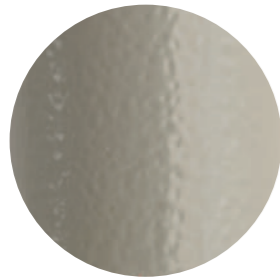


**GA**  
Anthracite grey / Grigio antracite



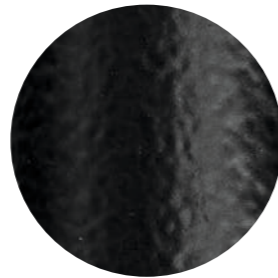
**GN**  
Natural grey / Grigio naturale

HAMMERED GLOSSY / BUCCIATA LUCIDA



SA300  
Sand / Sabbia

HAMMERED MATT / BUCCIATA OPACA

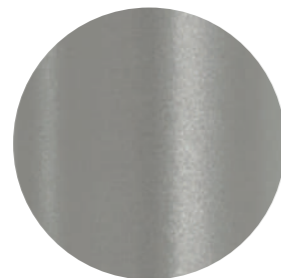


\_NERO  
Black / Nero

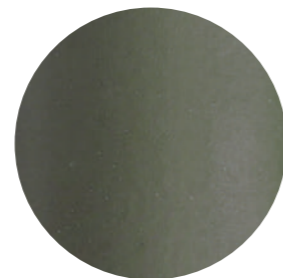
SMOOTH MATT / LISCIA OPACA



BI300  
White / Bianco

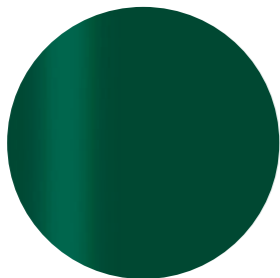


9007  
Aluminium / Alluminio

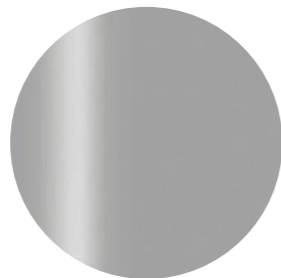


VE300  
Forest green / Verde bosco  
Soft touch

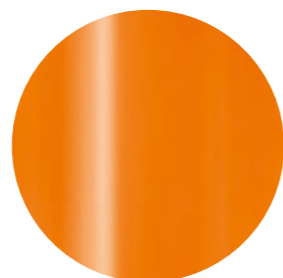
SMOOTH GLOSSY / LISCIA LUCIDA



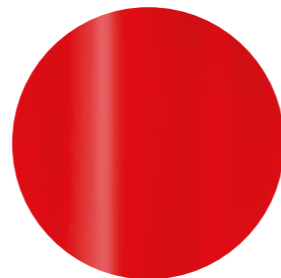
6005  
Green / Verde



AL  
Aluminium / Alluminio



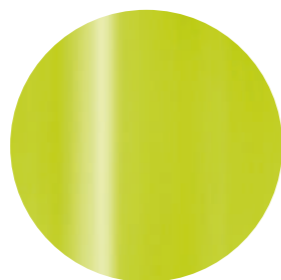
AR300  
Orange / Arancio



RO100  
Red / Rosso



BI400  
White / Bianco



VE200  
Green / Verde

# Outdoor

TEXTURED MATT / GOFFRATA OPACA



BI100E  
White / Bianco



BI200E  
White / Bianco



BE100E  
Beige / Beige



BE200E  
Beige / Beige



SA100E  
Sand / Sabbia



SA200E  
Sand / Sabbia



RA100E  
Pink / Rosa



GI100E  
Yellow / Giallo



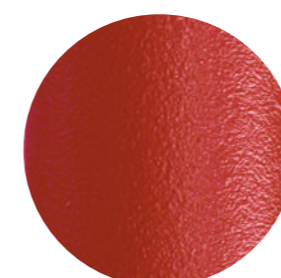
AR200E  
Orange / Arancio



AR400E  
Orange / Arancio



AR500E  
Orange / Arancio



RO200E  
Red / Rosso



RO400E  
Red / Rosso



RO300E  
Red / Rosso

TEXTURED MATT / GOFFRATA OPACA



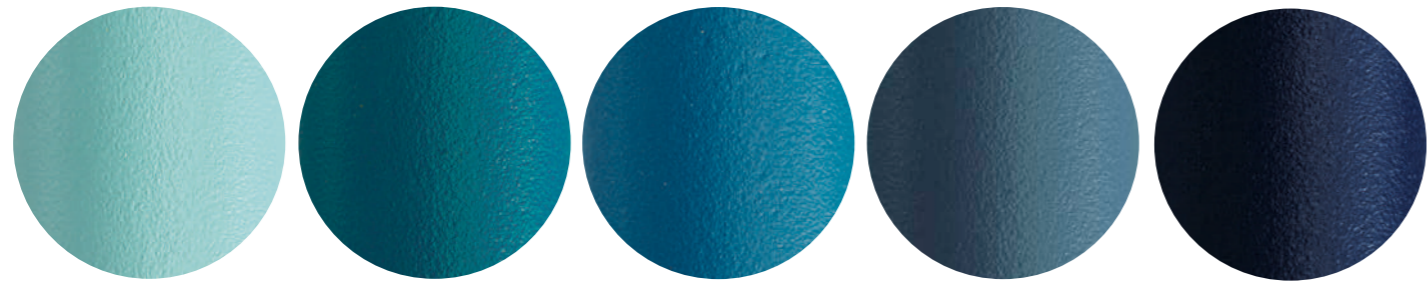
**MI100E**  
Honey / Miele

**TEE**  
Terracotta / Terracotta

**TE200E**  
Terracotta / Terracotta

**RUE**  
Rust / Ruggine

**MGE**  
Brown / Marrone



**AZ100E**  
Light blue / Azzurro

**BL500E**  
Blue / Blu

**BL300E**  
Blue / Blu

**BL600E**  
Blue / Blu

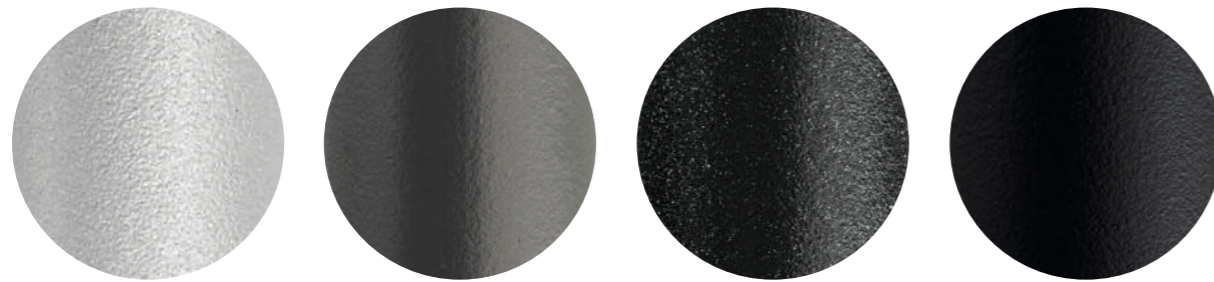
**BL400E**  
Blue / Blu



**VE100E**  
Sage green / Verde salvia

**VE600E**  
Green / Verde

**VE300E**  
Forest green / Verde bosco



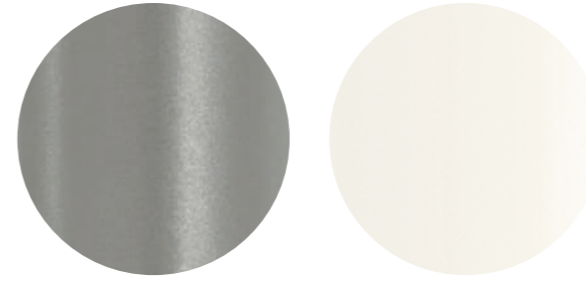
**AGE**  
Aluminium / Alluminio

**GAE**  
Anthracite grey / Grigio antracite

**GNE**  
Natural grey / Grigio naturale

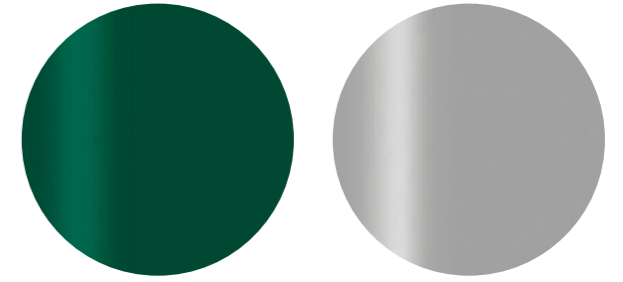
**NPE**  
Black / Nero

SMOOTH MATT / LISCIA OPACA



**9007E**  
Aluminium / Alluminio

**BI300E**  
White / Bianco



**6005E**  
Green / Verde

**ALE**  
Aluminium / Alluminio



**Weights, measurements and colours are indicative. Pedrali reserves the right to modify or upgrade the products without prior notice.**

Pesi, dimensioni e colori sono indicativi. Pedrali si riserva la facoltà di apportare modifiche o migliorie senza alcun preavviso.

**Industrial property right | Diritto di proprietà industriale**

**The contents of the present catalogue such as, by way of example, the works, the images, the pictures, the documents, the drawings, the forms, the logos and all other materials, published in any format, are worldwide protected by copyrights and any other industrial intellectual property right of Pedrali.**

I contenuti del presente catalogo, quali, a titolo esemplificativo, le opere, le immagini, le fotografie, i documenti, i disegni, le figure, i loghi ed ogni altro materiale, in qualsiasi formato, pubblicato sono protetti a livello mondiale dal diritto d'autore e da ogni altro diritto di proprietà intellettuale di PEDRALI.

Inspire. Create. Deliver.

P4.

1300 888 434



p4.design

