

Wzornik materiałów

Colouring pattern

Materialmuster

Noti. 2024



Jesion naturalny — tylko lite drewno
Natural ash — solid wood only
Eiche Natur — nur Massivholz
AZ05



Dąb naturalny
Natural oak
Eiche Natur
4900M



Orzech naturalny
Natural walnut
Nussbaum Natur
4100M



Dąb bielony
Bleached oak
Eiche geweißt
4954M



Dąb wędzony
Smoked oak
Eiche geräuchert
4955M



Dąb czerniony
Blackened oak
Eiche geschwärzt
4956M



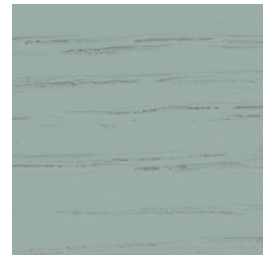
Dąb lakierowany na biało
Oak white lacquered
Eiche weiß lackiert
4949



Dąb off white
Oak off white
Eiche off white
RAL 1013



Dąb piaskowy
Oak Sand
Eiche Sand



Dąb miętowy
Oak Mint
Eiche Mint



Dąb Gold
Oak Gold
Eiche Gold
RAL 1005



Dąb Corten
Oak Corten
Eiche Corten
4958



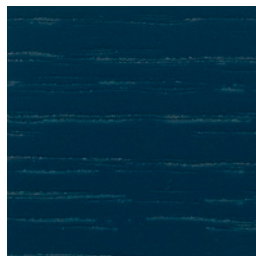
Dąb coral
Oak Coral
Eiche Coral
RAL 3013



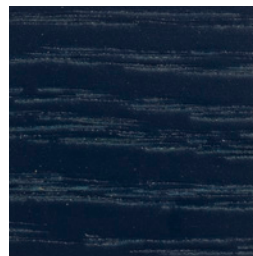
Dąb Burgund
Oak Burgund
Eiche Burgund
4951



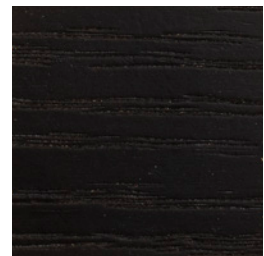
Dąb Jungle
Oak Jungle
Eiche Jungle
RAL 6015



Dąb Petrol
Oak Petrol
Eiche Petrol
RAL 5020


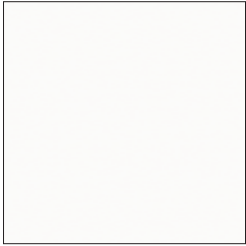




Dąb Night
Oak Night
Eiche Night
RAL 5011



Dąb lakierowany na czarno
Oak black lacquered
Eiche schwarz lackiert
4950

Płyty melaminowane — Melamine boards — Melaminbeschichtete Platten

	<p>Dąb naturalny Natural oak Eiche Natur</p> <hr/> <p>0400</p>		<p>Biały White Weiß</p> <hr/> <p>2700</p>		<p>Prawdziwy popiel True grey Echt-aschgrau</p> <hr/> <p>1208</p>		<p>Czarny Black Schwarz</p> <hr/> <p>1100</p>
--	--	---	---	--	---	---	---


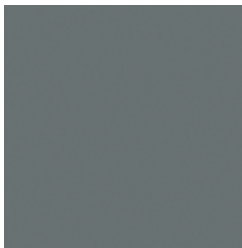






Stelaze metalowe — Metal frames — Metallgestelle

	<p>Stal nierdzewna Stainless steel Edelstahl</p> <hr/>		<p>Biały White Weiß</p> <hr/> <p>RAL 9016</p>		<p>Off white Off white Off white</p> <hr/> <p>RAL 1013</p>		
	<p>Gold Gold Gold</p> <hr/> <p>RAL 1005</p>		<p>Corten Corten Corten</p> <hr/> <p>RAL 8023</p>		<p>Coral Coral Coral</p> <hr/> <p>RAL 3013</p>		<p>Burgund Burgund Burgund</p> <hr/> <p>RAL 3005</p>
	<p>Miętowy Mint Mintze</p> <hr/>		<p>Jungle Jungle Jungle</p> <hr/> <p>RAL 6015</p>		<p>Petrol Petrol Petrol</p> <hr/> <p>RAL 5020</p>		<p>Night Night Night</p> <hr/> <p>RAL 5011</p>
	<p>Piaskowy Sand Sand</p> <hr/>		<p>Chestnut Chestnut Chestnut</p> <hr/> <p>RAL 8012</p>		<p>Choco Choco Choco</p> <hr/> <p>RAL 8019</p>		
	<p>Jasny popiel Light grey Hell-aschgrau</p> <hr/>		<p>Prawdziwy popiel True grey Echt-aschgrau</p> <hr/>		<p>Mocny grafit Dark graphite Intensives Grafit</p> <hr/> <p>RAL 7021</p>		<p>Czarny Black Schwarz</p> <hr/> <p>RAL 9005</p>

Lakierowane płyty MDF — Lacquered MDF board — Lackierte MDF Platten

	<p>Biały velvet Velvet White Weiß Velvet</p> <hr/> <p>RV</p>		<p>Off white velvet Velvet off white Off white Velvet</p> <hr/> <p>RAL 1013</p>		<p>Prawdziwy popiel velvet Velvet True grey Echt-aschgrau Velvet</p> <hr/> <p>ZV</p>		<p>Mocny grafit velvet Velvet Dark graphite Intensives Grafit Velvet</p> <hr/> <p>WV</p>
	<p>Gold velvet Velvet Gold Gold Velvet</p> <hr/> <p>RAL 1005</p>		<p>Corten velvet Velvet Corten Corten Velvet</p> <hr/> <p>CV</p>		<p>Coral velvet Velvet Coral Coral Velvet</p> <hr/> <p>RAL 3013</p>		<p>Burgund velvet Velvet Burgund Burgund Velvet</p> <hr/> <p>QV</p>
	<p>Miętowy velvet Velvet Mint Mintze Velvet</p> <hr/> <p>MV</p>		<p>Jungle velvet Velvet Jungle Jungle Velvet</p> <hr/> <p>RAL 6015</p>		<p>Petrol velvet Velvet Petrol Petrol Velvet</p> <hr/> <p>RAL 5020</p>		<p>Night velvet Velvet Night Night Velvet</p> <hr/> <p>RAL 5011</p>
	<p>Piaskowy velvet Velvet Sand Sand Velvet</p> <hr/> <p>TV</p>		<p>Chestnu velvet Velvet Chestnut Chestnut Velvet</p> <hr/> <p>RAL 8012</p>		<p>Choco velvet Velvet Choco Choco Velvet</p> <hr/> <p>RAL 8019</p>		<p>Czarny velvet Velvet Black Schwarz Velvet</p> <hr/> <p>BV</p>

Tulli / tworzywo sztuczne — Plastic — Kunststoff

	<p>Biały White Weiß</p> <hr/> <p>RAL 9003</p>		<p>Popiel Grey Grau</p> <hr/> <p>RAL 7037</p>		<p>Żółty Yellow Gelb</p> <hr/> <p>RAL 1023</p>		<p>Pomarańczowy Orange Orange</p> <hr/> <p>RAL 2004</p>
	<p>Czerwony Red Rot</p> <hr/> <p>RAL 3020</p>		<p>Niebieski Blue Blau</p> <hr/> <p>RAL 5017</p>		<p>Zielony Green Grün</p> <hr/> <p>RAL 6020</p>		<p>Czarny Black Schwarz</p> <hr/> <p>RAL 9005</p>

Materiał zawarty we wzorniku jest tworzony na ogólne potrzeby informacyjne oraz wizerunkowe i nie stanowi oferty handlowej w rozumieniu Kodeksu Cywilnego.

W powłokach lakierowanych, bejcowanych i malowanych dopuszczalne są różnice w odcieniach.

W ramach stałego doskonalenia produktów firma zastrzega sobie prawo do wprowadzania zmian w ofercie.

The content of the template has been prepared for general information and image-related purposes. It doesn't constitute an offer within the meaning of the Civil Code.

Slight colour variation in varnished, stained and painted coatings is considered acceptable.

The company reserves the right to make changes in the product range due to product improvement.

Das in der Mustersammlung enthaltene Material wird zu allgemeinen Informations- und Imagezwecken entwickelt und stellt kein Angebot im Sinne des Zivilgesetzbuches dar.

Bei durch Lackieren, Beizen und Anstreichen hergestellten Beschichtungen sind Tonabweichungen zulässig.

Im Rahmen einer kontinuierlichen Optimierung der Produkte behält sich unsere Firma das Recht vor, Änderungen im Angebot vorzunehmen.

Inspire. Create. Deliver.