



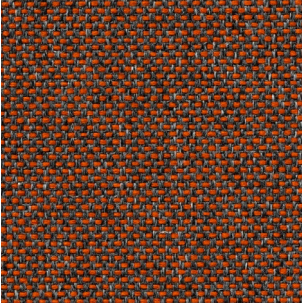
Upholstery fabrics  
made of 100% recycled  
PET bottles

**chairs&  
more**

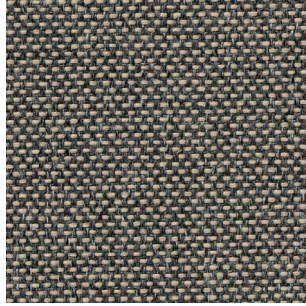
Avon

Cat. B

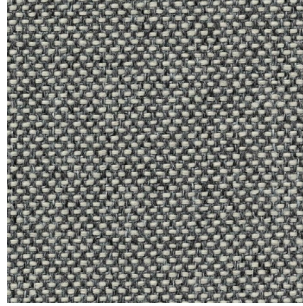
7068.01



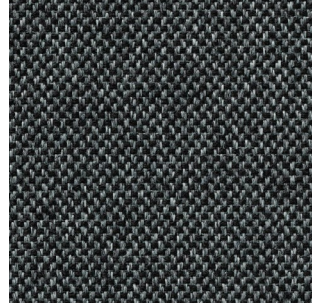
7068.04



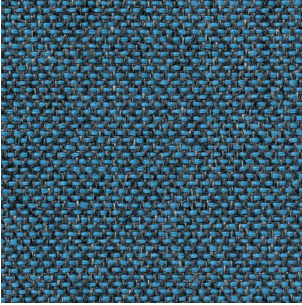
7068.05



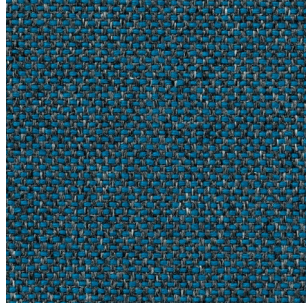
7068.07



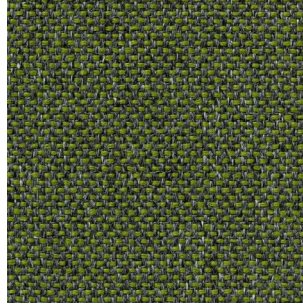
7068.08



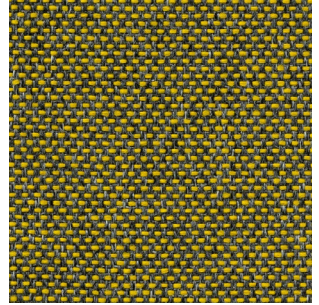
7068.09



7068.12



7068.13



**FEATURES**  
100% RECYCLED POLYESTER FR

**LIGHTFASTNESS**  
6 ISO 105 B02

**FASTNESS TO RUBBING**  
DRY 4/5, WET 4/-5, ISO 105X12

**ABRASION RESISTANCE**  
80.000 CYCLES UNI EN ISO 12947-2

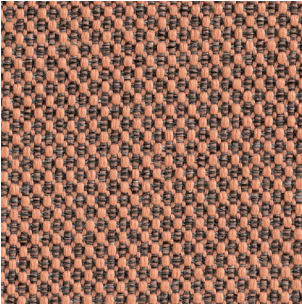
**FIRE RESISTANCE**  
EN 1021 - 1&2 (cigarette & match)  
BS 5852 Crib 5  
UNI 9175 Classe 1 IM  
California TB 117-2013  
IMO FTP Code 307 part 8

NF D 60 013 - AM.18  
DIN 4102, B1  
NFPA 260:2013, CLASS 1

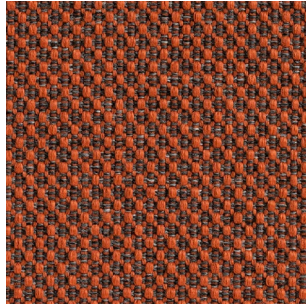
Norfolk

Cat. C

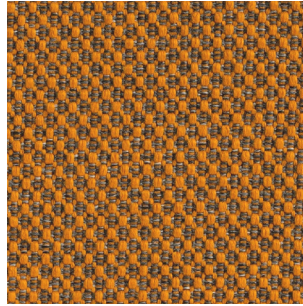
7069.02



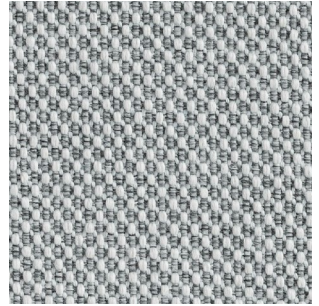
7069.03



7069.04



7069.07



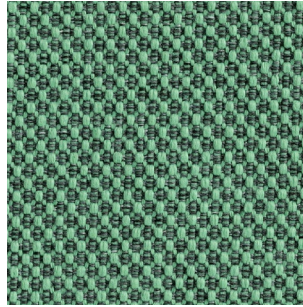
7069.09



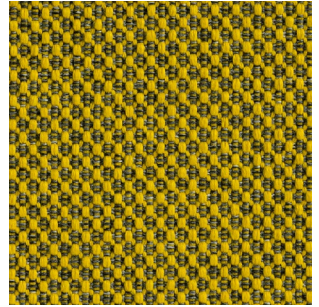
7069.11



7069.15



7069.16



**FEATURES**  
100% RECYCLED POLYESTER FR

**LIGHTFASTNESS**  
6 ISO 105 B02

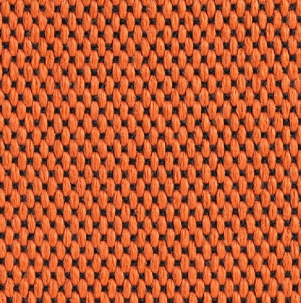
**FASTNESS TO RUBBING**  
DRY 4/5, WET 4/-5, ISO 105X12

**ABRASION RESISTANCE**  
70.000 CYCLES UNI EN ISO 12947-2

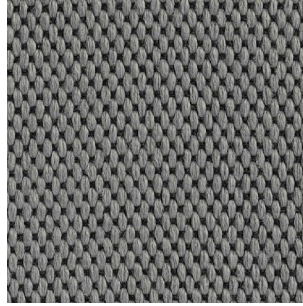
**FIRE RESISTANCE**  
EN 1021 - 1&2 (cigarette & match)  
BS 5852 Crib 5  
UNI 9175 Classe 1 IM  
California TB 117-2013  
IMO FTP Code 307 part 8

NF D 60 013 - AM.18  
DIN 4102, B1  
NFPA 260:2013, CLASS 1

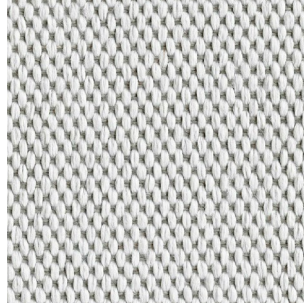
7067.03



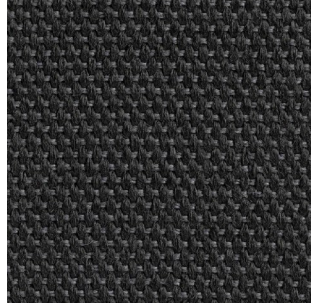
7067.07



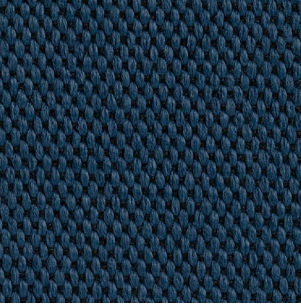
7067.08



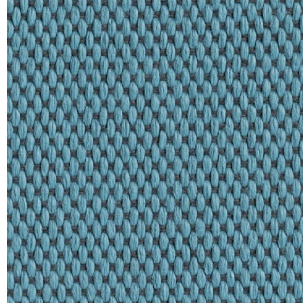
7067.10



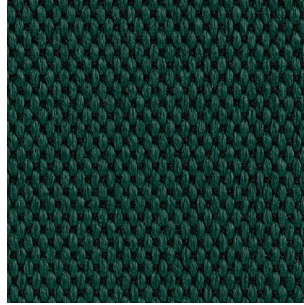
7067.13



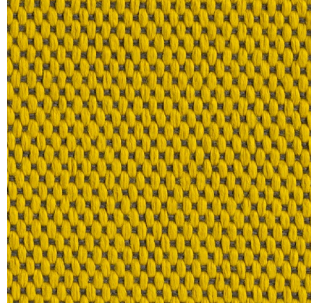
7067.14



7067.18



7067.21



**FEATURES**  
100% RECYCLED POLYESTER FR

**LIGHTFASTNESS**  
6 ISO 105 B02

**FASTNESS TO RUBBING**  
DRY 4/5, WET 4/-5, ISO 105X12

**ABRASION RESISTANCE**  
80.000 CYCLES UNI EN ISO 12947-2

**FIRE RESISTANCE**  
EN 1021 - 1&2 (cigarette & match)  
BS 5852 Crib 5  
UNI 9175 Classe 1 IM  
California TB 117-2013  
IMO FTP Code 307 part 8

NF D 60 013 - AM. 18  
DIN 4102, B1  
NFPA 260:2013, CLASS 1

Inspire | Create | Deliver

P4.