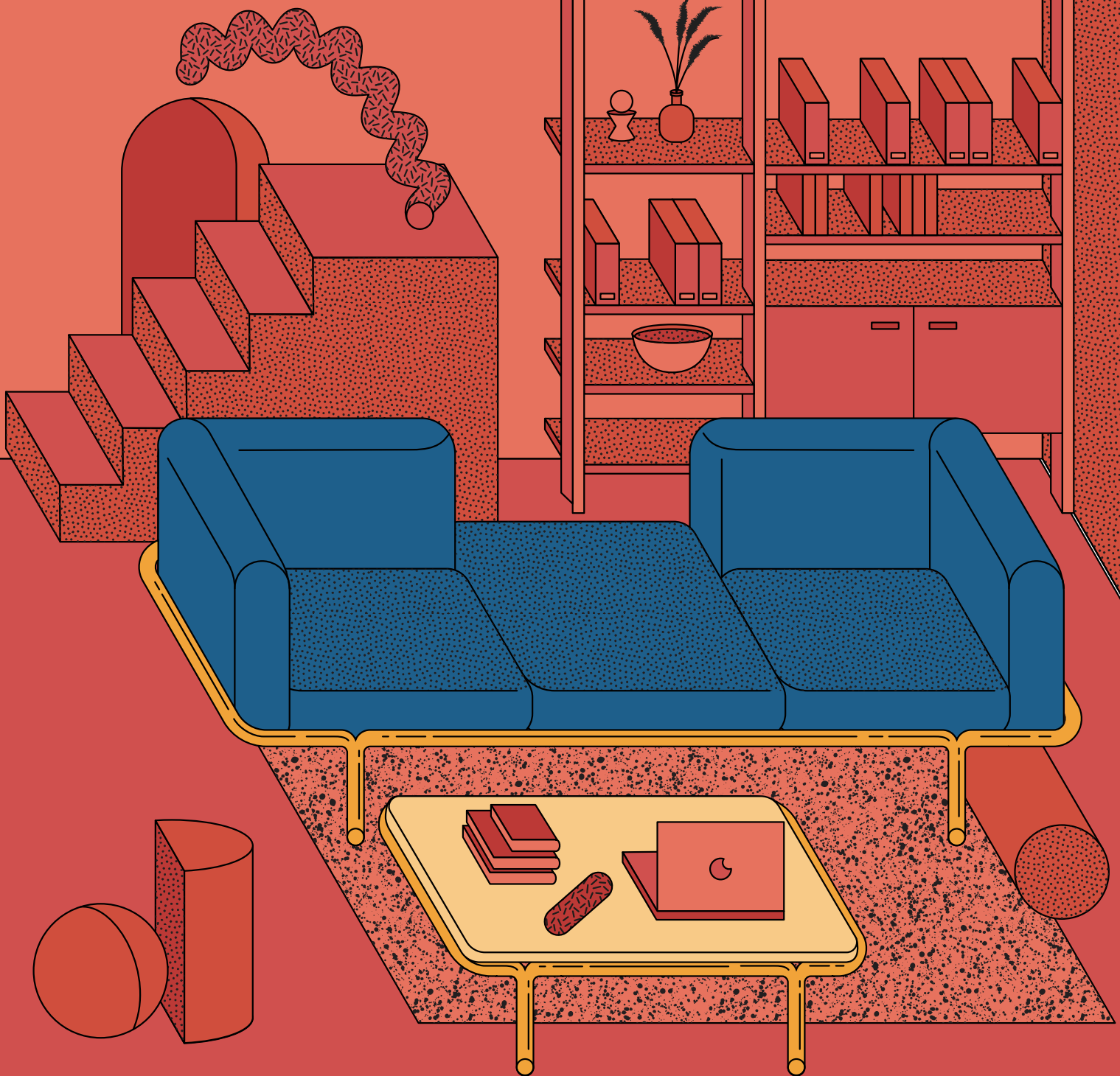


Bomm

Play with space



sitland

Architectural suggestions

The generous seats of Bomm are inspired by those of the Indian Charpoi, a type of bed that is made available to truck drivers at gas stations along the roads of Southern India.

Like the Charpoi, the soft and attractive volumes of Bomm invite to a relaxing time or to an informal work session.

The design of the structure was instead influenced by metal pipes and the scaffoldings that protect the temples under construction in the village of Bommayapalayam: a magnificent contrast and intertwining of steel and traditional architecture that offers a multitude of combinations.



AdriAn BLANC, is a designer graduated from ECAL School. He began his career as a designer in India, where he has taken care of interior design projects for hotels and restaurants, trying to integrate traditional and contemporary. Back in France he took part in various collective space projects.

His projects are inspired by his travels between Europe to Asia, and by the encounter with different cultures.

An integral part of the French design ecosystem, he has participated in the creation of numerous design projects. In 2018, he moved to the historic center of Lyon where he launched Pondy, a creative studio that develops inspiring products and environments.









Creativity indoor and outdoor

Flexibility and customization are the keywords of the new spaces where connection and sharing are the main activities.

Environments must be fluid and adapt quickly to new needs.

For this reason, Bomm is the solution for the spaces of today and the needs of tomorrow.

Bomm modules combine easily creating many different configurations suitable for lounge or working areas as well as for an outdoor informal meeting.











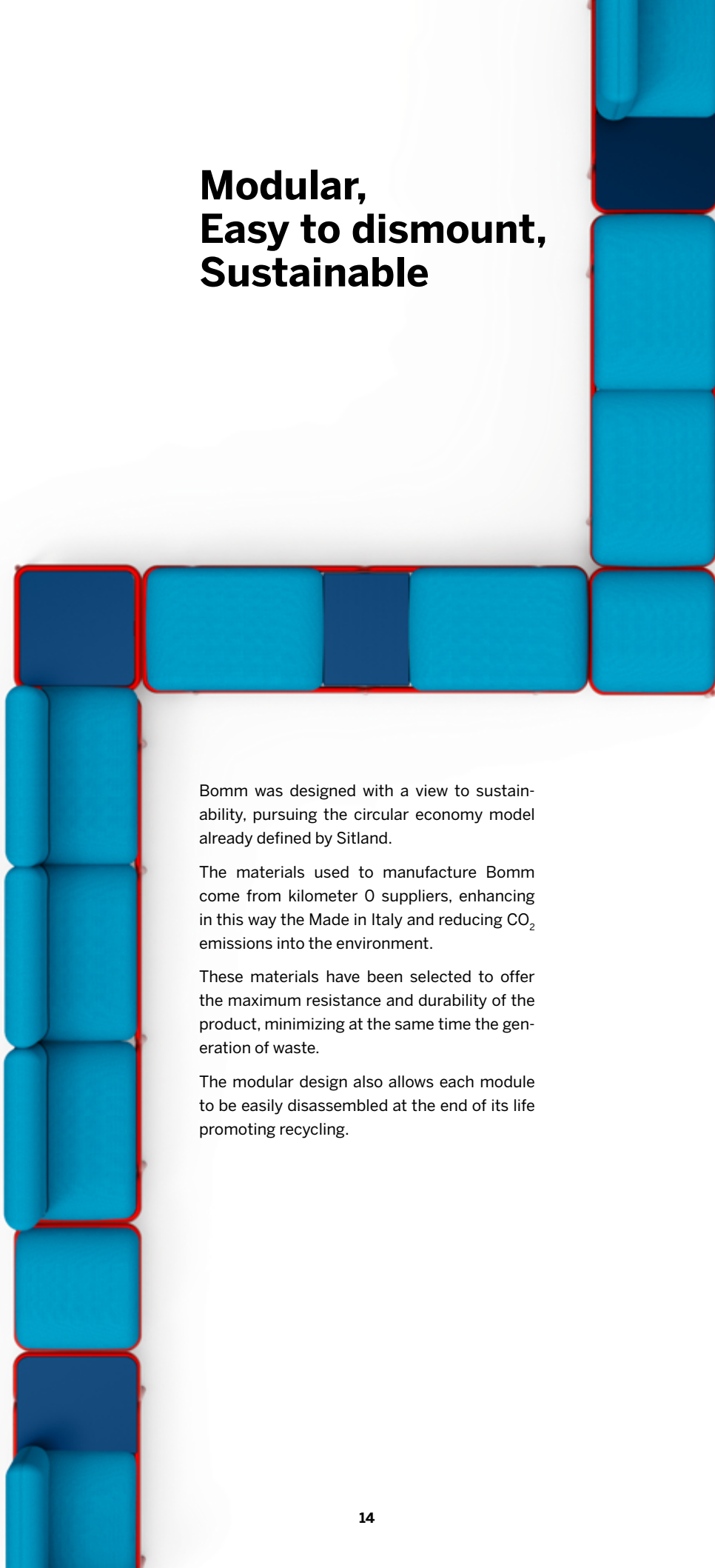
Bomm has been designed with a particular attention to comfort: the large seat is suitable for any kind of users and its soft armrests make this sofa perfect for relaxing breaks and informal work sessions.







Modular, Easy to dismount, Sustainable



Bomm was designed with a view to sustainability, pursuing the circular economy model already defined by Sitland.

The materials used to manufacture Bomm come from kilometer 0 suppliers, enhancing in this way the Made in Italy and reducing CO₂ emissions into the environment.

These materials have been selected to offer the maximum resistance and durability of the product, minimizing at the same time the generation of waste.

The modular design also allows each module to be easily disassembled at the end of its life promoting recycling.



Play with space

The Bomm range offers the possibility to create an infinite number of configurations by combining 9 different tubular steel structures with 6 seat modules with or without backrest and 3 table modules.

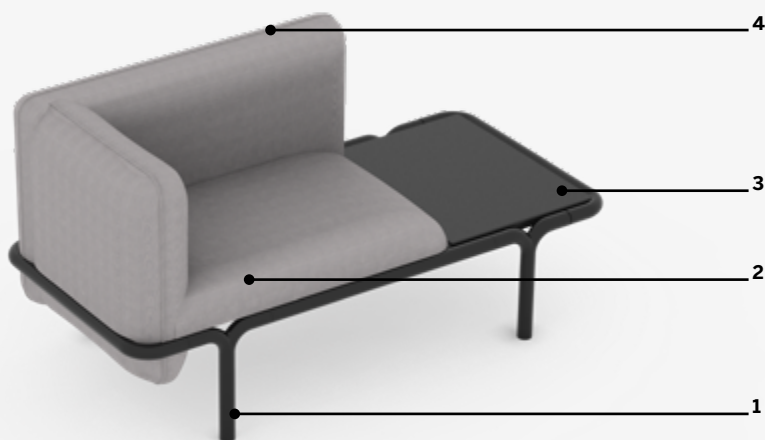
A system that is easy to configure and adapt to different space solutions.

The collection is completed with a series of functional accessories: revolving tablet, coat rack and hidden USB sockets.





Technical Information



Bomm Indoor

- 1 Tubular steel frame ø 40 mm.
- 2 CFC-free polyurethane foam, inner part in birch plywood. Removable cover.
- 3 Table Top made of MDF, smooth finish.
- 4 Piping matching the tone-on-tone color for single-color upholstery; in the same color of the seat for the two tone option.

Bomm Outdoor

- 1 Tubular steel frame ø 40 mm coated for outdoor.
- 2 CFC-free polyurethane foam for outdoor, inner part in birch plywood. Removable cover.
- 3 Table Top made of MDF, smooth finish for outdoor.
- 4 Piping matching the tone-on-tone color for single-color upholstery; in the same color of the seat for the two tone option.

Overview moduli

Linear structures



Mod. A Cm 99 X 68,5 X 33 H
designed for cushion
mod. 1, mod. 2, mod. 3, mod. 4,
mod. 5 or 1 large rectangular table



Mod. B Cm 146 X 68,5 X 33 H
Designed for cushion kit
mod. 4 and small table on the right
(to be ordered apart)
*Arranged for assembling
accessories (indoor version only)*



Mod. C Cm 146 X 68,5 X 33 H
Ready for cushion kit
mod. 3 and left side table
(to be ordered apart)
*Arranged for assembling
accessories (indoor version only)*



Mod. D Cm 188 X 68,5 X 33 H
Designed for cushion
mod. 1, mod. 2, mod. 3 and mod. 4
without table



Mod. E Cm 238 X 68,5 X 33 H
Structure with central table and
cushion Mod. 1, Mod. 2, Mod. 3 and
Mod. 4
*Arranged for assembling
accessories (indoor version only)*



Mod. F Cm 282 X 68,5 X 33 H
designed for cushion
mod. 1, mod. 2, mod. 3 and mod. 4
without table

Connecting structures for compositions



Mod. I Cm 68,5 X 68,5 X 33 H
Square structure with one supporting leg for table or cushion mod. 6



Mod. H Cm 68,5 X 68,5
Square structure for coffee table for connecting 2 or more linear structures (no corner structure)

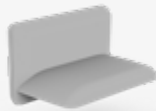


Mod. L Cm 68,5 X 68,5 X 33 H
Structure for square coffee table or cushion mod. 6

Cushions



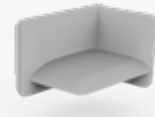
Mod. 1 Cm 92 X 65 X 12 H
Rectangular cushion



Mod. 2 Cm 92 X 65 X 60 H
Kit for Rectangular cushion with backrest



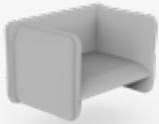
Mod. 3 Cm 92 X 65 X 60 H
Kit cushion with backrest and right armrest



Mod. 4 Cm 92 X 65 X 60 H
Kit for Rectangular cushion and left armrest

Only for opening and closing modules and closing composition

Only for opening and closing modules and closing composition



Mod. 5 Cm 92 X 65 X 60 H
Kit Cushion with backrest and armrests



Mod. 6 Cm 65 X 65 X 12 H
Square cushion

Tables



Mod. T1 Cm 62,5 X 46,5 X 1,8 H
Small rectangular table top for insertion in central and final position



Mod. T3 Cm 92,5 X 62,5 X 1,8 H
Large rectangular coffee table top for stand alone structure



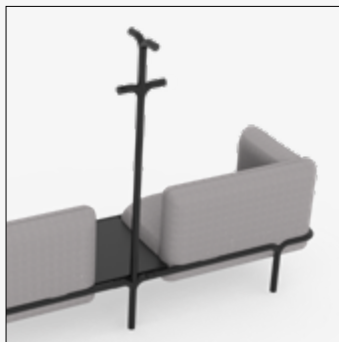
Mod. T5 Cm 62,5 X 62,5 X 1,8 H
Square table top

Accessories

Only available for assembly on small rectangular tables



Single swivel round table



Coat rack

Sitland spa

via Cà Silvestre 52

36024 Nanto, Vicenza - I

t +39 0444 637 100

f +39 0444 638 407

info@sitland.com

www.sitland.com

A brand of
Mezzalira
— Investment
Group

follow us on

facebook @sitland.official

instagram @sitland.official

Inspire. Create. Deliver.