

Jetson L2





Jetson L2

Jetson L2 is a huddle space for two people, perfect to talk and debate, free from distractions. Thanks to adjustable seats and shelves to decorate with books, posters, and plants, everyone can feel at home here. The ventilation exchanges air every two minutes, keeping your minds sharp and your ideas fresh.

Jetson is a family of universal acoustic pods designed to make everyone's work joyful and fruitful. It's truly people-focused: comfortable and customizable through add-on sets to meet your need and vision. Made of extruded aluminum, which makes it the lightest and most environmentally-friendly pod on the market. With its durable construction, no-hassle assembly, effective sound attenuation, and attractive price, Jetson will introduce the benefits of acoustic pods to all.

FUNCTION

Meeting, collaboration or focused work

ACOUSTICS

Insulation

USAGE

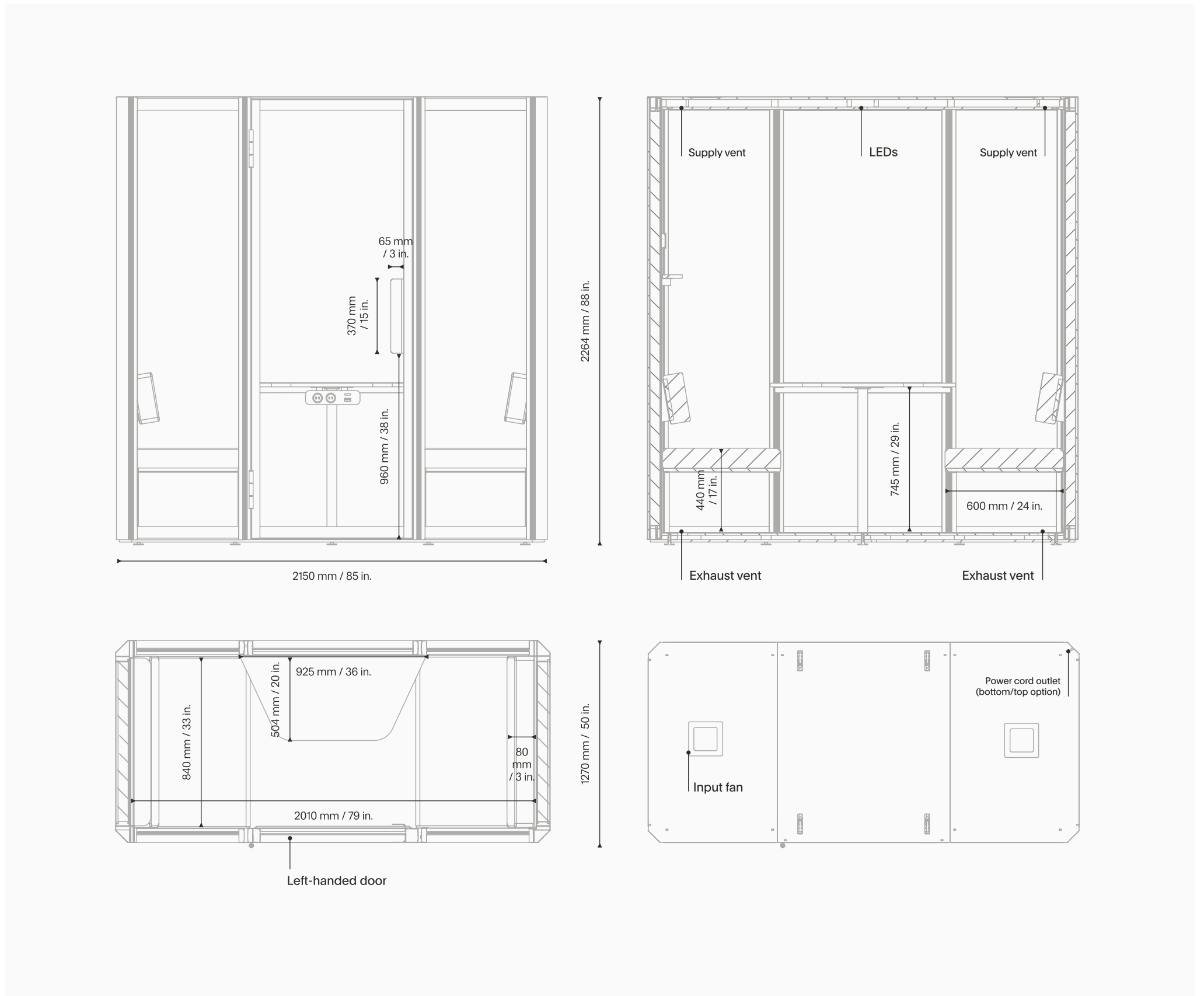
Open space

Reception

Breakout area

Other public spaces

Dimensions, weight & features



DIMENSIONS [MM | IN.]

EXTERIOR / INTERIOR

WEIGHT [KG | LBS]

Width	2150 / 2010 85 / 79
Depth	1000 / 860 40 / 34 + 800 32 with an open door
Height	2264 / 2102 88 / 83
Tabletop [w x d x h]	925 × 504 × 745 36 × 20 × 29

Pod	373 822
Seating	12,5 28
Tabletop	11 24
Deep shelf	2,3 5
Shallow shelf	1,5 3
Display rail	1,4 3

Technical data

ACOUSTIC RESULTS AND VENTILATION

Sound insulation	up to 44,7 dB
Reverberation time	0,2 s
Nominal airflow	365 m ³ /h
Fan noise outside / inside	≤36 dB / ≤38 dB

POWER SUPPLY AND CONSUMPTION

Working (fan, LEDs)	40 W
Power supply voltage	220-240 / 100-120 VAC, 50-60 Hz
Power sockets in a mediaport	2
USB fast charger in a mediaport	TUF A+C 30 W, 5 V DC
LAN port	Posiibility to route the LAN cable
Available socket types	FR / DE / UK / US / CH / AU / DK* / IT*

*The appearance of the media port may differ from that shown in the renderings. Parameters and features remain unchanged.

COMPOSITION

Aluminium structure and steel elements
 Plywood and melamine faced chipboard
 Isolating and absorbing materials
 Tempered glass
 Felt

STANDARD EQUIPMENT SET

Ventilation system
 LED lighting
 Occupancy sensor
 Media port with 2 power and A+C USB sockets
 Profiled tabletop
 2× sofa with height-adjustable backrest
 Shallow shelf with display rail and magnet
 2× wall hook
 Power cord 3 m | 118 in.

CERTIFICATES AND TESTS

ISO 14001, ISO 9001
 VOC and Formaldehyde tested
 Speech reduction tested
 Reaction to fire tested

OPTIONAL EQUIPMENT

Monitor hanger
 837 × 429 mm | 33 × 17 in.
 Max load: 50 kg | 110 lbs
 VESA standard 100/200/300



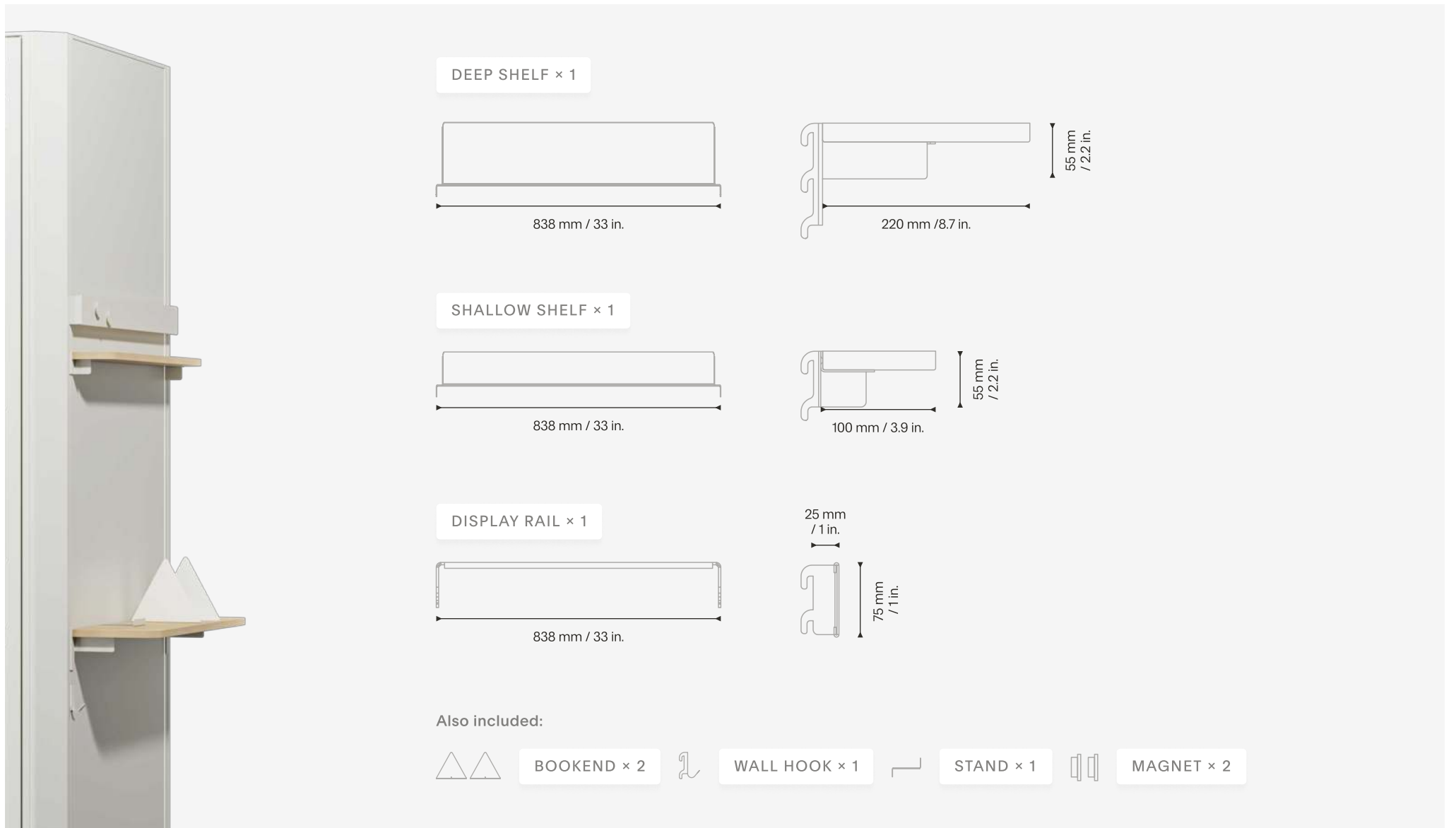
0%
Formaldehyde
VOC tested



Add-on sets

Library set

Weight / with packaging 6,5 / 8 kg | 14 / 18 lbs



DEEP SHELF × 1

838 mm / 33 in.

220 mm / 8.7 in.

55 mm / 2.2 in.

SHALLOW SHELF × 1

838 mm / 33 in.

100 mm / 3.9 in.

55 mm / 2.2 in.

DISPLAY RAIL × 1

838 mm / 33 in.

25 mm / 1 in.

75 mm / 3 in.

Also included:

BOOKEND × 2

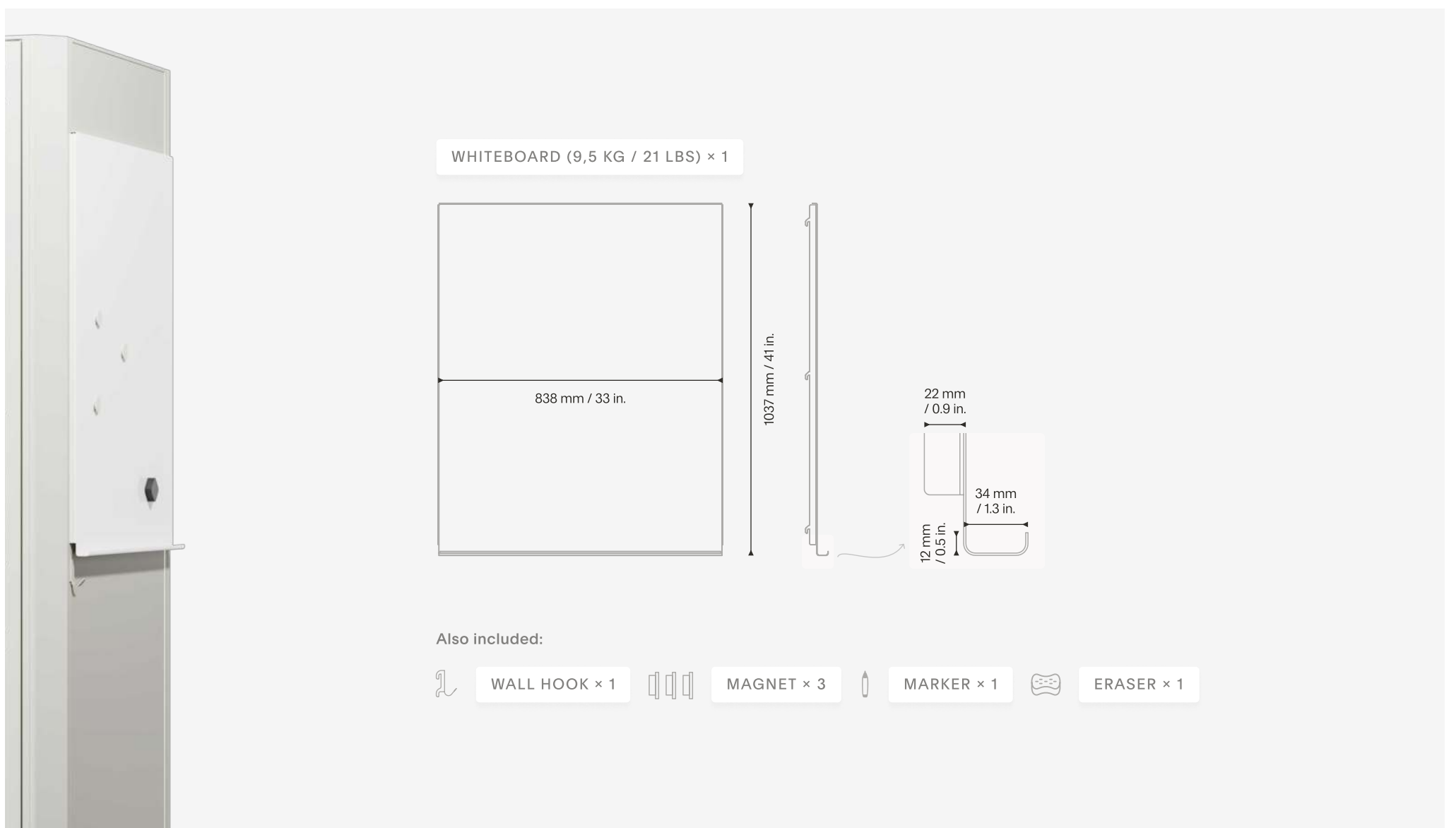
WALL HOOK × 1

STAND × 1

MAGNET × 2

Note set

Weight / with packaging 10 / 12 kg | 22 / 26 lbs



WHITEBOARD (9,5 KG / 21 LBS) × 1

838 mm / 33 in.

1037 mm / 41 in.

22 mm / 0.9 in.

34 mm / 1.3 in.

12 mm / 0.5 in.

Also included:

WALL HOOK × 1

MAGNET × 3

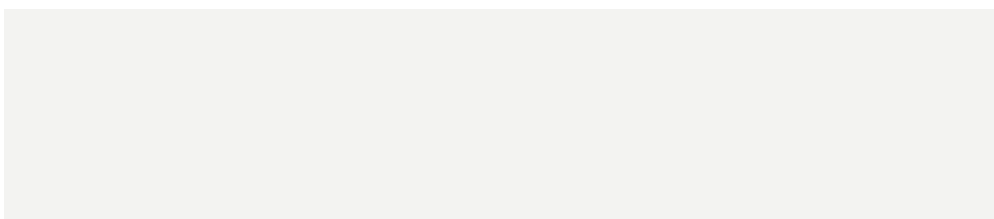
MARKER × 1

ERASER × 1

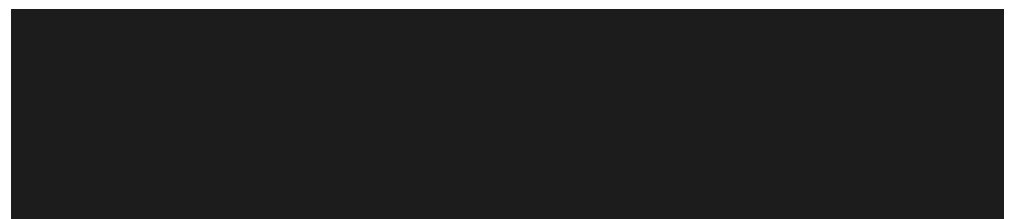
Finishes overview



1 EXTERIOR WALLS AND FRAME



Moon White, PANTONE GREY 403051



Void Black, NCS S8500-N

2 INTERIOR WALLS AND CEILING



Light gray felt

3 TABLETOP AND SHELVES



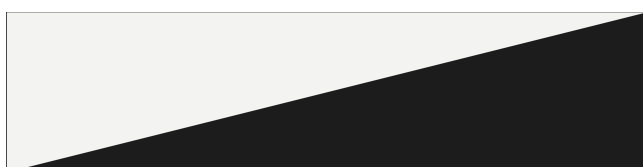
Oak wood melamine, H1334 ST9

4 SEATING UPHOLSTERY



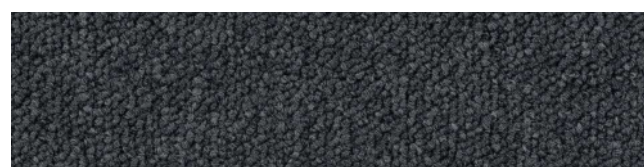
Gabriel Chili, 60115

5 BOOKENDS AND MAGNETS



Matching walls color

6 FLOOR



Dark gray carpet

Inspire. Create. Deliver.