

Helix

P4.





Small grid back Mesh as standard

Automatic Adjustment System as standard

A new generation of chassis structure design, with a double spring pull system based on the user's weight. Automatic adjustment of rear elevation bids a simple farewell to tedious adjustment.

Transparent nylon material mesh - optional



Synchro Tilting Mechanism - optional*

Synchronised to deliver greater control for more users. There are two control rods - one for lifting seat, the other for back adjustments.

The standard mechanism has three positions lockable.

Sliding mechanism is optional offering the seat front-to- back range 50 mm.

Premium Configuration: Fine Grid Back Mesh with Automatic Adjustment System







Enhance your workspace with a sleek white frame complemented by a transparent mesh design.

The refined white nylon frame adds a sophisticated touch, harmonizing effortlessly with diverse colour schemes. Paired with a fully transparent nylon mesh, it brings a fresh, modern aesthetic that elevates and integrates seamlessly into any office environment.



The Helix back frame is available in three colour options.

Its sleek, thin profile emphasises the quality and lightweight feel of high-grade materials. The transparent mesh backrest enhances the chair's sophisticated aesthetic, offering a contemporary and technologically advanced look. From the back, the frame's dignified silhouette exudes stability, while the side view reveals a minimalist structure that embodies modern style and innovation. Helix seamlessly combines cutting-edge design with a sense of fashionable elegance.



Ergonomic Precision

Our design process carefully considers the key dimensions of office chairs to ensure ergonomic compliance and enhanced user comfort. For shorter individuals, we offer a lower seat height and adjustable armrests to accommodate optimal seating posture. For taller users, the chair features an extended back frame, providing excellent lumbar support and full back coverage. High-specification cylinder rods and a wide range of liftable armrests further ensure customisable support for every user.





Versatile Configurations

The Helix swivel office chair is available in multiple configurations, including a work chair, executive chair, and stool. It offers a polished aluminium five-star base and optional 4D armrests for added comfort and support. For the backrest, choose between a fully transparent nylon mesh or a translucent elastic mesh, available in seven colour options. The forward tilt feature is optional, providing enhanced thigh support in a declined posture during intensive tasks.



Every design has been carefully considered.

The seat cover features a louvered ventilation system to allow effective heat dissipation with each movement, enhancing user comfort. Product specifications are conveniently stored in a dedicated compartment, ensuring the user manual is always accessible. The included L-shaped tool is designed for portability, allowing users to assemble, disassemble, or reassemble the chair easily for relocation or maintenance. Our seats are constructed without glue or nails, and the fabric is removable for easy cleaning or replacement. Seat depth adjustment offers a standard range of 70mm for added flexibility.





Back Mesh*

The transparent back is crafted from high-quality nylon mesh, available in black and white. A half-transparent mesh option is also offered, with seven stock colours to choose from.

Armrest*

The standard armrest is height-adjustable with a soft PU cover on top, offering a height adjustment range of 105 mm.

Optional 4D Armrest:

The 4D armrest allows for adjustments in four directions:

- Height: 105 mm adjustment range
- Side-to-side: 60 mm range (30 mm per arm cap)
- Front-to-back: 50 mm adjustment range
- Pivoting arm caps: 20 mm inward and 20 mm outward movement

Non-wooden Seat

The seat incorporates a painted steel panel to ensure secure attachment of the flexible armrests. Ventilation holes are strategically placed in the foam cover to promote air circulation. The molded seat foam is expertly designed for optimal comfort and support.

Seat Fabric

Two series, Medley and Atlantic, are sourced from Gabriel, with thirteen stocked colour options available.

Synchro Tilting Mechanism*

The mechanism is synchronised to provide enhanced control for a broader range of users. It features two control rods: one for seat height adjustment and the other for backrest locking. The standard mechanism offers four lockable positions.

*Forward tilt is available as an option, allowing for support of a declined thigh posture during intensive tasks such as typing.

Cylinder*

Equipped with a Class-4 cylinder from Korea's SAMHONGSA*, the chair features a 143 mm black-level inner rod that ensures a seat lift height of over 130 mm. The cylinder maintains a clean, oil-free design, with the colour of the rod matching the tube for a seamless appearance. When using nylon in grey or white options, the cylinder is calibrated to a high standard and engineered by KGS for optimal performance and durability.

Base*

Nylon base radius is 350 mm with two colors: black and grey.

* Polished Aluminum base is optional.

Casters

PA castors diameter is 65 mm. It has two colors: black and grey.

*You should choose 60 mm soft PU castors to protect floor when it is on the wood floor.

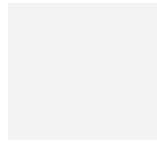
Nylon colors | Back frame



Black

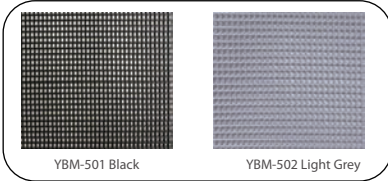


Grey



White

Back Mesh | YourSeat Back Mesh (YBM)

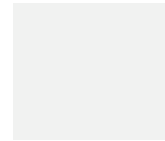


YBM-501 Black

YBM-502 Light Grey



YBM-301 Black



YBM-302 White



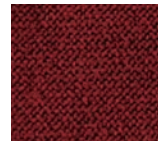
YBM-401 Black



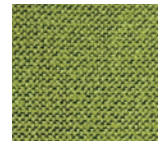
YBM-402 Dark Grey



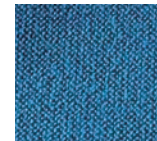
YBM-403 Light Grey



YBM-404 Red



YBM-405 Green

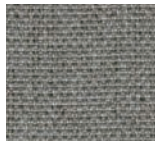


YBM-406 Blue

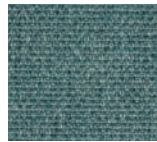
Seat Fabric | YourSeat Seat Fabric (YSF)



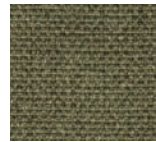
YSF-301 Dark Brown



YSF-302 Light Grey



YSF-303 Blue



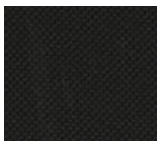
YSF-304 Green



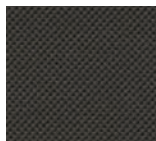
YSF-305 Red



YSF-306 Purple



YSF-401 Black



YSF-402 Black Grey



YSF-403 Dark Grey



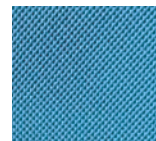
YSF-404 Light Grey



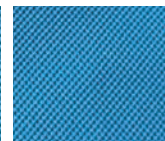
YSF-405 Red



YSF-406 Green



YSF-407 Light Blue



YSF-408 Blue

H Specification

We show product details by a several words. It is very useful to recognize the production before opening the box.



Warranty

The Helix chair has successfully passed testing by SGS in accordance with ANSI/BIFMA X5.1-2017 standards (No. SDHL1905008453FT). We offer a 5-year warranty on the complete chair and a 12-year warranty on the back frame and base structure.

Inspire. Create. Deliver.