

ENV Range

Raising the standard



ergonomic.

elegant.

effortless.

OVERVIEW

ENV Features

Quick Assembly

ENV Square

ENV Round

ENV Meeting Table

Accessories





Elevate Your Environment

In the pursuit of a modern work setting, Elevar introduces our newest selection of electric and fixed height workstations. The ENV system is a high-quality and budget-friendly option crafted for swift assembly without sacrificing structural integrity. With the increasing need for adaptable work environments, we are committed to enhancing your efficiency with this breakthrough.

At Elevar, we understand that productivity flourishes in an environment that adapts to your needs. ENV is more than just a piece of furniture; it's an investment in your well-being and efficiency. Join the revolution of modern workspaces with Elevar, where innovation meets functionality, and every detail is designed with you in mind.





ENV Features



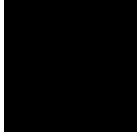
Quick Install Premium Finishes

The ENV Range by Elevar – a premium collection of fixed height and electric adjustable desks designed for modern workspaces. Combining sleek aesthetics with advanced technology, ENV enhances productivity and comfort in home offices, corporate spaces, and creative studios.

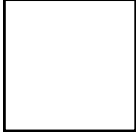
Engineered with next-generation technology, ENV features whisper-quiet height adjustment powered by a motor in each leg, ensuring smooth and reliable performance. Each desk includes a 3-stage height adjustable leg system with built-in min/max height locks, offering maximum flexibility and safety. Built with durable materials and customisable settings, ENV provides an optimal ergonomic experience.

With minimalist designs, premium finishes, and exceptional craftsmanship, the ENV Range complements any workspace. Elevate your environment with a system that blends performance and style effortlessly.

Finish & Warranty



The ENV Electric Adjustable Desk Range is available in a range of stylish finishes, including Pearl White and Jet Black and enhancing both aesthetics and user comfort in any home or commercial environment.



Designed for lasting performance, the ENV Range comes with a 10-year warranty on all structural, mechanical, and electronic components, offering peace of mind for professionals who demand reliability.

The Elevar ENV Range is AFRDI Blue Tick certified to AS/NZS4442:2018 standards.





Quick Assembly

ENV Fast Install Bracket



Fast Assembly – Thoughtfully designed for quick installation, saving valuable time on project setups.



Minimal Tools, Maximum Precision – Pre-assembled components and smart engineering ensure a seamless fit with minimal hardware.



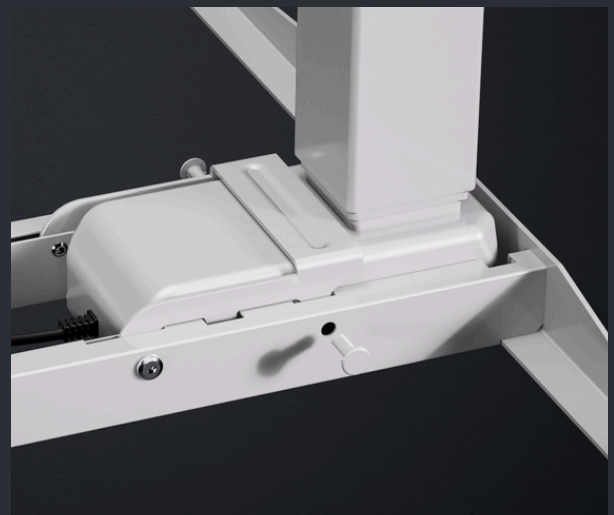
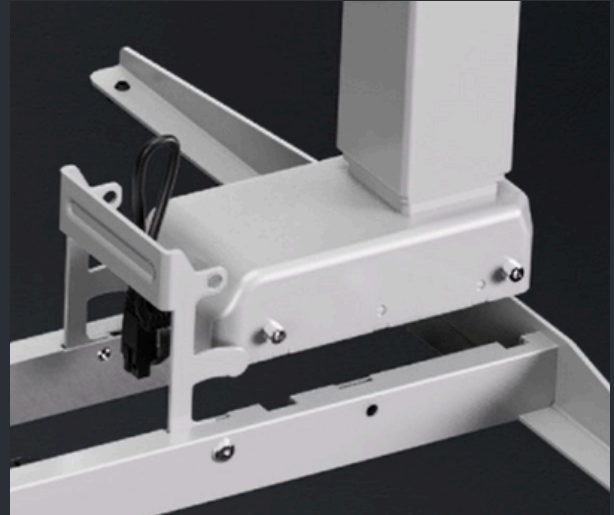
Pre-Installed Cabling – Clean, pre-installed connections maintain a sleek, professional look.



Structural Integrity – Reinforced frame design provides long-term stability without compromising elegance.



Time-Saving Solution – Ideal for project and install teams working on fast-paced fit-outs or custom workspace projects.





ENV
Square

ENV2

The ENV2 desk is a testament to sleek design and robust functionality. Its sturdy construction ensures unwavering stability, making it an ideal choice for both minimalist and dynamic office environments. The desk's clean lines and optional cable and screen management system allow it to integrate seamlessly into various interior designs, enhancing both aesthetics and user comfort.



WIDTH RANGE
1200mm to 2000mm



HEIGHT RANGE
595mm to 1257mm
(without tabletop)



LOAD CAPACITY
Maximum 120kg
(evenly distributed)



OPERATING SPEED
50mm/sec



WARRANTY
10 Year
All components



IMPACT SAFETY
Automatic collision
control with tipping
sensor



CONTROLLER
3 programmable
memory height presets
with USB-C fast
charger



OPERATING VOLUME
Less than 48dB



ENV3

The ENV3 model revolutionises workspace adaptability with its quick assembly feature, the first of its kind worldwide. Designed for efficiency, it supports configurations at 90°, 120°, and 180°, making it suitable for a range of collaborative settings. Each leg is powered by an individual motor, ensuring smooth and precise height adjustments. The ENV3's innovative design not only facilitates rapid setup but also offers flexibility in workspace planning, accommodating evolving project needs with ease.



WIDTH RANGE
1200mm to 2000mm



HEIGHT RANGE
595mm to 1257mm
(without tabletop)



LOAD CAPACITY
Maximum 150kg



OPERATING SPEED
50mm/sec



WARRANTY
10 Year
All components



IMPACT SAFETY
Automatic collision
control with tipping
sensor

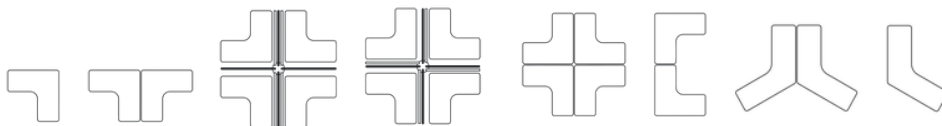


CONTROLLER
3 programmable
memory height presets
with USB-C fast
charger



OPERATING VOLUME
Less than 48dB

CONFIGURATIONS



ENV4

The ENV4 Workstation epitomises the fusion of advanced sit-stand technology with user-centric design. Engineered for swift assembly without compromising on functionality. This workstation is ideal for creating collaborative environments, with its modular design allowing for seamless integration into various office layouts. The ENV4's emphasis on ergonomics and flexibility makes it a cornerstone for designing dynamic and health-conscious. Optional cable tray joiners conceal cabling between each workstation.



WIDTH RANGE
1200mm to 2000mm



HEIGHT RANGE
595mm to 1257mm
(without tabletop)



LOAD CAPACITY
Maximum 120kg
(evenly distributed)



OPERATING SPEED
50mm/sec



WARRANTY
10 Year
All components



IMPACT SAFETY
Automatic collision
control with tipping
sensor



CONTROLLER
3 programmable
memory height presets
with USB-C fast
charger



OPERATING VOLUME
Less than 48dB

CONFIGURATIONS







ENV
Round

ENV2 Round

The ENV2 desk, now reimagined with elegantly rounded legs, is a refined blend of contemporary design and dependable performance. The softened silhouette adds a sculptural touch, offering a more organic aesthetic that boasts both form and function. Its robust construction guarantees enduring stability. Ideal for studios and modern workspaces, the ENV2 balances visual lightness with professional-grade strength.



WIDTH RANGE
1200mm to 2000mm



HEIGHT RANGE
595mm to 1257mm
(without tabletop)



LOAD CAPACITY
Maximum 120kg
(evenly distributed)



OPERATING SPEED
60mm/sec



WARRANTY
10 Year
All components



IMPACT SAFETY
Automatic collision
control with tipping
sensor



CONTROLLER
3 programmable
memory height presets
with USB-C fast
charger



OPERATING VOLUME
Less than 40dB



ENV3 Round



The ENV3 model, now featuring sleek round legs, elevates workspace adaptability with a softer, more architectural form. Its streamlined circular profile introduces a refined aesthetic that complements design-conscious environments, making it especially appealing to architects and creatives. Thoughtfully engineered, the ENV3 supports dynamic project workflows while enhancing the visual language of any modern workspace.



WIDTH RANGE
1200mm to 2000mm



HEIGHT RANGE
595mm to 1257mm
(without tabletop)



LOAD CAPACITY
Maximum 120kg
(evenly distributed)



OPERATING SPEED
60mm/sec



WARRANTY
10 Year
All components



IMPACT SAFETY
Automatic collision
control with tipping
sensor

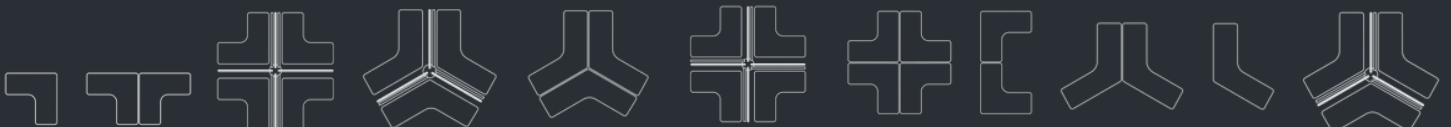


CONTROLLER
3 programmable
memory height presets
with USB-C fast
charger



OPERATING VOLUME
Less than 40dB

CONFIGURATIONS



ENV4 Round

The ENV4 Workstation, now enhanced with sculptural round legs, merges advanced sit-stand technology with refined, user-focused design. The rounded profile adds a softer, architectural presence—ideal for studios and design-led workspaces. Its modular design integrates seamlessly into diverse layouts, fostering collaboration while maintaining visual cohesion. With an emphasis on ergonomics and flexibility, the ENV4 is a versatile solution for creating dynamic, health-conscious environments with a designer's edge.



WIDTH RANGE
1200mm to 2000mm



HEIGHT RANGE
595mm to 1257mm
(without tabletop)



LOAD CAPACITY
Maximum 120kg
(evenly distributed)



OPERATING SPEED
60mm/sec



WARRANTY
10 Year
All components



IMPACT SAFETY
Automatic collision
control with tipping
sensor



CONTROLLER
3 programmable
memory height presets
with USB-C fast
charger



OPERATING VOLUME
Less than 40dB

CONFIGURATIONS





ENV
MT

ENVMT

Designed for modern workspaces, the ENV MT combines sleek aesthetics with effortless assembly. Featuring a sturdy yet elegant frame, premium finishes, and a quick-install system, this meeting table is perfect for collaborative spaces, boardrooms, and design studios.

The ENV Meeting Table is available in both Round and Square leg styles.



WIDTH RANGE
1100mm - 2700mm wide;
70mm - 1500mm deep



HEIGHT RANGE
595mm to 1257mm
(without tabletop)



LOAD CAPACITY
Maximum 200kg
(evenly distributed)



OPERATING SPEED
60mm/sec



WARRANTY
10 Year
All components



IMPACT SAFETY
Automatic collision
control with tipping
sensor



CONTROLLER
3 programmable
memory height presets
with USB-C fast
charger



OPERATING VOLUME
Less than 40dB





Accessories



Valor Monitor Arm



Anti-Gravity Caddy



Pluto Monitor Arm



Valor HD Monitor Arm



Valor HD Dual Monitor Arm



Toro Anti Fatigue Mat

Contact

12 Armada Pl, Banyo QLD 4014

1300 353 827

sales@elevar.com.au

www.elevar.com.au



Inspire. Create. Deliver.