

maxdesign

Finishes



Fabrics



**FABRIC
CAT. A**
Fidivi One
1506



GENERAL FEATURES

DESCRIPTION	Knitted fabric, 100% Recycled Polyester from bottles
COMPOSITION	100% Polyester Recycled
WEIGHT	525 g/lm - 350 g/lm
MECHANICAL PROPERTIES	
ABRASION RESISTANCE	100.000 Rubs
FASTNESS TO LIGHT	6 (blue scale)
FASTNESS TO RUBBING	4/5 (grey scale)



**FABRIC
CAT. A**
Fidivi Jet
9110

GENERAL FEATURES

DESCRIPTION	Fabric with a compact structure in single and two-colour items. Particular wool handtouch. 66 new colorways
COMPOSITION	100% Polyester Trevira CS
WEIGHT	365 g/ml - 260 g/m ²
MECHANICAL PROPERTIES	
ABRASION RESISTANCE	65.000 Rubs
FASTNESS TO LIGHT	6 (blue scale)
FASTNESS TO RUBBING	4/5 (grey scale)



**FABRIC
CAT. A**
Qubo Byte
BY-902

GENERAL FEATURES

COMPOSITION	100% Polyester Recycled FR
WEIGHT	550 gr./MTL
MECHANICAL PROPERTIES	
ABRASION RESISTANCE	100.000 Martindale
FASTNESS TO LIGHT	5-6 (ISO)
PILLING	4-5 (EN ISO)

Fabrics



**FABRIC
CAT. A**
Fidivi Corte
9825

GENERAL FEATURES

DESCRIPTION Yarn dyed chenille fabric in 30 iridescent colors

COMPOSITION 100% Polyester Trevira CS

WEIGHT 520 g/lm - 370 g/m²

MECHANICAL PROPERTIES

ABRASION RESISTANCE 50.000 Rubs

FASTNESS TO LIGHT 6 (blue scale)

FASTNESS TO RUBBING 4/5 (grey scale)



**FABRIC
CAT. A**
Qubo Callas
CA-900

GENERAL FEATURES

COMPOSITION 100% Polyester with FR backing

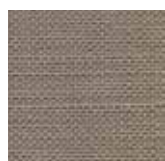
WEIGHT 800 gr./MTL

MECHANICAL PROPERTIES

ABRASION RESISTANCE 80.000 Martindale

FASTNESS TO LIGHT 5 (ISO)

PILLING 4-5 (EN ISO)



**FABRIC
CAT. A**
Fidivi Safari
9111

GENERAL FEATURES

DESCRIPTION Yarn dyed fabric. Natural look, linen/cotton handtouch in 20 colorways

COMPOSITION 100% Polyester Trevira CS

WEIGHT 590 g/ml - 425 g/m²

MECHANICAL PROPERTIES

ABRASION RESISTANCE 70.000 Rubs

FASTNESS TO LIGHT 6 (blue scale)

FASTNESS TO RUBBING 4/5 (grey scale)

Fabrics



**FABRIC
CAT. B**
Vescom Rolla
7065.13

GENERAL FEATURES	
COMPOSITION	88% recycled polyester FR / 12% polyester FR
WEIGHT	± 775 gr/m ¹ , ± 25 oz/yd ¹
MECHANICAL PROPERTIES	
ABRASION RESISTANCE	50.000 Martindale
FASTNESS TO LIGHT	6 (ISO)
PILLING	4 (EN ISO)



**FABRIC
CAT. B**
Vescom Fuga
7081.01

GENERAL FEATURES	
COMPOSITION	79% recycled polyester FR / 21% polyester FR
WEIGHT	± 807 gr/m ¹ , ± 26 oz/yd ¹
MECHANICAL PROPERTIES	
ABRASION RESISTANCE	100.000 Martindale
FASTNESS TO LIGHT	6-7 (ISO)
PILLING	4-5 (EN ISO)



**FABRIC
CAT. B**
Qubo Antibes
AN-100

GENERAL FEATURES	
COMPOSITION	10% Viscose – 90% Polyester with FR backing
WEIGHT	1080 gr./MTL
MECHANICAL PROPERTIES	
ABRASION RESISTANCE	50.000 Martindale
FASTNESS TO LIGHT	4-5 (ISO)
PILLING	4 (EN ISO)

Fabrics



**FABRIC
CAT. B**
Qubo Volt
VL-908

GENERAL FEATURES

COMPOSITION 100% Polyester with FR backing

WEIGHT 1020 g/ml +/- 8%

MECHANICAL PROPERTIES

ABRASION RESISTANCE 80.000 Martindale

FASTNESS TO LIGHT 4-5 (ISO)

PILLING 4-5 (EN ISO)



**FABRIC
CAT. B**
Gabriel Focus
60209

GENERAL FEATURES

DESIGNER Inger Mosholt Nielsen

COMPOSITION 100% New Zealand wool

MECHANICAL PROPERTIES

ENDURANCE 100,000 Martindale

FASTNESS TO LIGHT 5-7



**FABRIC
CAT. B**
**Gabriel Focus
Melange**
60309

GENERAL FEATURES

DESIGNER Inger Mosholt Nielsen

COMPOSITION 100% New Zealand wool

MECHANICAL PROPERTIES

ENDURANCE 100,000 Martindale

FASTNESS TO LIGHT 5-7

Fabrics



**FABRIC
CAT. B**
Max x Home Split
01

GENERAL FEATURES

COMPOSITION 66% PP riciclato/recycled; 34% PL

WEIGHT 950 g/ml +/- 8%

MECHANICAL PROPERTIES

ABRASION RESISTANCE 60.000 Martindale

FASTNESS TO LIGHT ≥ 4/5

PILLING ≥ 4/5



**FABRIC
CAT. B**
Qubo Ivan
IV-900

GENERAL FEATURES

COMPOSITION 84% Polyester – 16% Acrylic with FR backing

WEIGHT 1050 gr./MTL

MECHANICAL PROPERTIES

ABRASION RESISTANCE 50.000 Martindale

FASTNESS TO LIGHT 4-5 (ISO)

PILLING 4 (EN ISO)



**FABRIC
CAT. C**
Kvadrat Remix 3
326

GENERAL FEATURES

DESIGNER Giulio Rodolfo

COMPOSITION 90% New wool worsted, 10% Nylon

WEIGHT 415 g/lin.m

SUSTAINABILITY Label Ecolabel UE "The Flower"

MECHANICAL PROPERTIES

ABRASION RESISTANCE 100.000 Martindale

FASTNESS TO LIGHT 5-7 (ISO)

PILLING 4 (EN ISO)

Fabrics



**FABRIC
CAT. C**
Qubo Shelter
SH-039

GENERAL FEATURES

COMPOSITION 100% Polyester FR

WEIGHT 756 gr./MTL

MECHANICAL PROPERTIES

ABRASION RESISTANCE 100.000 Martindale

FASTNESS TO LIGHT 5 (ISO)

PILLING 5 (EN ISO)



**FABRIC
CAT. C**
Kvadrat Maple
732

GENERAL FEATURES

DESIGNER Åsa Pärson

COMPOSITION 81% viscose 15% linen 4% polyester

WEIGHT 910 g/lin.m

SUSTAINABILITY Greenguard Gold, HPD

MECHANICAL PROPERTIES

ABRASION RESISTANCE 30.000 Martindale

FASTNESS TO LIGHT 6 (ISO)

PILLING 4-5 (EN ISO)



**FABRIC
CAT. F**
Gabriel Nobel
61298

GENERAL FEATURES

COMPOSITION 100% New Zealand wool

WEIGHT 800 g/lm — 25.8 oz/lin.yd

MECHANICAL PROPERTIES

ABRASION RESISTANCE 75.000 Martindale

FASTNESS TO LIGHT 5-7 (ISO)

PILLING 4-5 (EN ISO)

Fabrics



**FABRIC
CAT. C**
Kvadrat Patio
210

GENERAL FEATURES

DESIGNER Karina Nielsen Rios

COMPOSITION 100% Trevira CS

WEIGHT 560 g/lin.m

SUSTAINABILITY Greenguard Gold, HPD, EPD

MECHANICAL PROPERTIES

ABRASION RESISTANCE 45.000 Martindale

FASTNESS TO LIGHT 5-7 (ISO)

PILLING 3 (EN ISO)



**FABRIC
CAT. C**
Max x Home Gropius
05

GENERAL FEATURES

COMPOSITION 65% PC; 21% PL; 10% WO; 3% CO%; 1% VI

WEIGHT 1.260 g/ml +/- 8%

MECHANICAL PROPERTIES

ABRASION RESISTANCE 40.000 Martindale

FASTNESS TO LIGHT ≥ 4/5

PILLING ≥ 4



**FABRIC
CAT. C**
Kvadrat Field 2
233

GENERAL FEATURES

DESIGNER Giulio Rodolfo

COMPOSITION 100% Trevira CS

WEIGHT 430 g/lin.m

SUSTAINABILITY Reduced impact

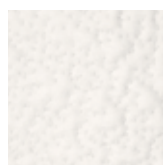
MECHANICAL PROPERTIES

ABRASION RESISTANCE 100.000 Martindale

FASTNESS TO LIGHT 6-7 (ISO)

PILLING 4 (EN ISO)

Fabrics



**FABRIC
CAT. D**

Max x Home Candy
04

GENERAL FEATURES

COMPOSITION 64% PL; 34% PP; 2% EA

WEIGHT 910 g/ml +/- 8%

MECHANICAL PROPERTIES

ABRASION RESISTANCE 50.000 Martindale

FASTNESS TO LIGHT ≥ 5

PILLING ≥ 3/4



**FABRIC
CAT. D**

Kvadrat Canvas
244

GENERAL FEATURES

DESIGNER Giulio Rodolfo

COMPOSITION 90% new wool, worsted 10% nylon

WEIGHT 480 g/lin.m

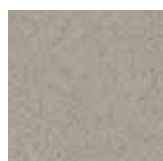
SUSTAINABILITY Label Ecolabel UE "The Flower"

MECHANICAL PROPERTIES

ABRASION RESISTANCE 100.000 Martindale

FASTNESS TO LIGHT 6 (ISO)

PILLING 4 (EN ISO)



**FABRIC
CAT. D**

Kvadrat Hero 2
212

GENERAL FEATURES

DESIGNER Patricia Urquiola

COMPOSITION 97% new wool 3% recycled nylon

WEIGHT 580 g/lin.m

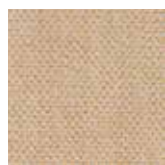
MECHANICAL PROPERTIES

ABRASION RESISTANCE 45.000 Martindale

FASTNESS TO LIGHT 6 (ISO1-8)

PILLING 3-4 (EN ISO1-5)

Fabrics



**FABRIC
CAT. D**
**Kvadrat Steelcut
Quartet**
414

GENERAL FEATURES

DESIGNER	Frans Dijkmeijer & Giulio Ridolfo
COMPOSITION	90% new wool, worsted 10% nylon
WEIGHT	770 g/lin.m
SUSTAINABILITY	Label Ecolabel UE "The Flower"

MECHANICAL PROPERTIES

ABRASION RESISTANCE	100.000 Martindale
FASTNESS TO LIGHT	6-7 (ISO)
PILLING	4-5 (EN ISO 1-5)



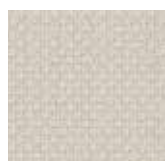
**FABRIC
CAT. D**
Vescom Zanzibar
7059.15

GENERAL FEATURES

COMPOSITION	100% mohair (base: cotton)
WEIGHT	± 805 gr/m ¹ , ± 26 oz/yd ¹

MECHANICAL PROPERTIES

ABRASION RESISTANCE	100.000 Martindale
FASTNESS TO LIGHT	4-5 (ISO)
PILLING	4-5 (EN ISO)



**FABRIC
CAT. E**
Rohi Cleo
Pearl

GENERAL FEATURES

COMPOSITION	95% virgin wool 5% polyamide
WEIGHT	690 g/m ² - 970 g/lm
SUSTAINABILITY	Natural, renewable raw material

MECHANICAL PROPERTIES

ABRASION RESISTANCE	70.000 Martindale
FASTNESS TO LIGHT	5 (ISO)
PILLING	4-5 (EN ISO)

Fabrics



**FABRIC
CAT. E**
Rohi Credo
Diamond

GENERAL FEATURES

COMPOSITION 95% virgin wool 5% polyamide

WEIGHT 610 g/m² - 870 g/lfm

SUSTAINABILITY Natural, renewable raw material

MECHANICAL PROPERTIES

ABRASION RESISTANCE 100.000 Martindale

FASTNESS TO LIGHT 5 (ISO)

PILLING 4-5 (EN ISO)



**FABRIC
CAT. E**
Rohi Arco
Calla

GENERAL FEATURES

COMPOSITION 95% virgin wool 5% polyamide

WEIGHT 700 g/m² - 980 g/lm

SUSTAINABILITY Natural, renewable raw material

MECHANICAL PROPERTIES

ABRASION RESISTANCE 70.000 Martindale

FASTNESS TO LIGHT 5 (ISO)

PILLING 4-5 (EN ISO)



**FABRIC
CAT. E**
Rohi Opera
Macadamia

GENERAL FEATURES

COMPOSITION 96% virgin wool 4% polyamide

WEIGHT 720 g/m² - 1010 g/lm

SUSTAINABILITY Natural, renewable raw material

MECHANICAL PROPERTIES

ABRASION RESISTANCE 90.000 Martindale

FASTNESS TO LIGHT 5 (ISO)

PILLING 4-5 (EN ISO)

Fabrics



**FABRIC
CAT. E**
**Kvadrat Febrik
Planum**
201

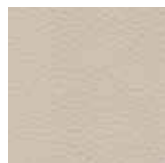
GENERAL FEATURES	
DESIGNER	Raw Color
COMPOSITION	44% new wool 42% polyester 14% nylon
WEIGHT	700 g/lin.m
SUSTAINABILITY	Greenguard Gold, HPD
MECHANICAL PROPERTIES	
ABRASION RESISTANCE	100.000 Martindale
FASTNESS TO LIGHT	5-6 (ISO)
PILLING	4 (EN ISO)



**FABRIC
CAT. E**
Kvadrat Coda
222

GENERAL FEATURES	
DESIGNER	Norway Says & Per Bjørnsen
COMPOSITION	90% new wool 10% nylon
WEIGHT	860 g/lin.m
MECHANICAL PROPERTIES	
ABRASION RESISTANCE	100.000 Martindale
FASTNESS TO LIGHT	5-6 (ISO1-8)
FASTNESS TO RUBBING	4 (ISO 1-5)

Leather



**LEATHER
CAT. F**

Brina
perla 5201

DESCRIPTION

The natural look of this leather has been obtained by the use of the most modern and advanced finishing technologies through which it has been possible to give to this leather a natural and velvet look that characterizes nubuk finish leathers without sacrificing the safety of protected leathers. Soft leather, very natural grain and warm and matt colors make this leather successful. Colors range has been studied to be current and perfectly in line with the trends of the moment.

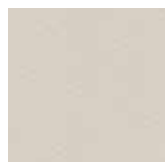


**LEATHER
CAT. F**

Elegance
camoscio 2011

DESCRIPTION

The item ELEGANCE thanks to its natural nearly smooth aspect and the particular softness of the hand which gives him a napa-leather effect, gains great success in the category of upper leather coverings. Its main characteristics is (apart from its lightness ensured by the thickness of the leather from 1,0 to 1,2 mm and the particular grease used in the retanning process) its extremely natural aspect. This is due to the finishing with water and pigmented anilines and to a printing which allows us to obtain an absolute naturalness. Its characteristics impose an accurate selection of raw materials comes from selected European breedings. The production process respects the rules for the safeguarding of man and of the environment.



**LEATHER
CAT. F**

Maya
Artic 7320

DESCRIPTION

The MAYA article interprets the already consolidated trend in fashion circles to combine the modern stylistic needs with the vintage style of aged, consumed... like an old and soft jeans to comfortably wear at any occasion. The softness is obtained through the special retanning and drumming process that make the leather full-bodied and with a spready natural grain very pleasant to the look at. With a finishing based on waxes and anilines, applied on the grain and the further treatment of a light abrasion we are able to obtain that characteristic worn aspect and the pleasant sensation of velvety to the touch... thus, as a soft, old and warm clothing, perfectly fits to the lines of your sofa. The final working step is a treatment named "Idra" that makes the article lightly protected on his grain surface. The MAYA leather thanks to its softness, velvety hand and vintage look lends itself very well to both dress up any sofa model, from the classic lines to the modern design, and the creation of bags and accessories. The range of colors has been carefully selected to combine the NEW AGE with many different styles and trying to satisfy and understand in the best possible way the taste of customers more and more selective.

Leather



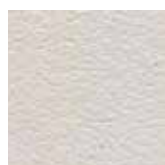
**LEATHER
CAT. F**

Natural
crema 4003

DESCRIPTION

The item NATURAL has a great role in the category of high-quality coverings. The name itself expresses the main and fundamental characteristics of the leather: NATURALNESS and SOFTNESS. With its thickness which varies from 1.3 to 1.5 mm and an accurate retanning process, rich in revitalizing components, NATURAL introduces itself with a very soft hand which gives a pleasant tactile sensation. Thanks to an accurate processing of the grain and to the use of selected ecological (or containing water) pigments, it is possible to obtain a leather with a very light and resistant protection layer, with a brilliant and natural aspect. Its main characteristic which distinguishes it from almost all furniture leathers is the complete lack of mechanical printing processes: the natural grain on NATURAL derives from the working process to which it is submitted, typical of the full-thick leathers. This process is carried on in the full respect for man and the environment.

EcoLeather



**ECOLEATHER
CAT. A**
Zaffiro
ZF119

GENERAL FEATURES

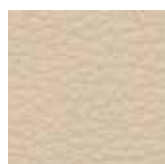
DESCRIPTION	Flame retardant coated fabric by Flukso®
-------------	--

COMPOSITION	76% PVC - 22% PES - 2% PU
-------------	---------------------------

WEIGHT	540+/- 10g/m ²
--------	---------------------------

MECHANICAL PROPERTIES

ABRASION RESISTANCE	60.000 Rubs
---------------------	-------------



**ECOLEATHER
CAT. A**
Prestige
Sabbia 153

GENERAL FEATURES

DESCRIPTION	Flame retardant coated fabric by Flukso®
-------------	--

COMPOSITION	23%PL-CO – 1%PU – 76% PVC
-------------	---------------------------

WEIGHT	720±20%g/m ²
--------	-------------------------

MECHANICAL PROPERTIES

ABRASION RESISTANCE	40.000 Rubs
---------------------	-------------

Inspire. Create. Deliver.