

Jetson L2





Jetson L2

Jetson L2 is a huddle space for two people, perfect to talk and debate, free from distractions. Thanks to adjustable seats and shelves to decorate with books, posters, and plants, everyone can feel at home here. The ventilation exchanges air every two minutes, keeping your minds sharp and your ideas fresh.

Jetson is a family of universal acoustic pods designed to make everyone's work joyful and fruitful. It's truly people-focused: comfortable and customizable through add-on sets to meet your need and vision. Made of extruded aluminum, which makes it the lightest and most environmentally-friendly pod on the market. With its durable construction, no-hassle assembly, effective sound attenuation, and attractive price, Jetson will introduce the benefits of acoustic pods to all.

FUNCTION

Meeting, collaboration or focused work

ACOUSTICS

Insulation

USAGE

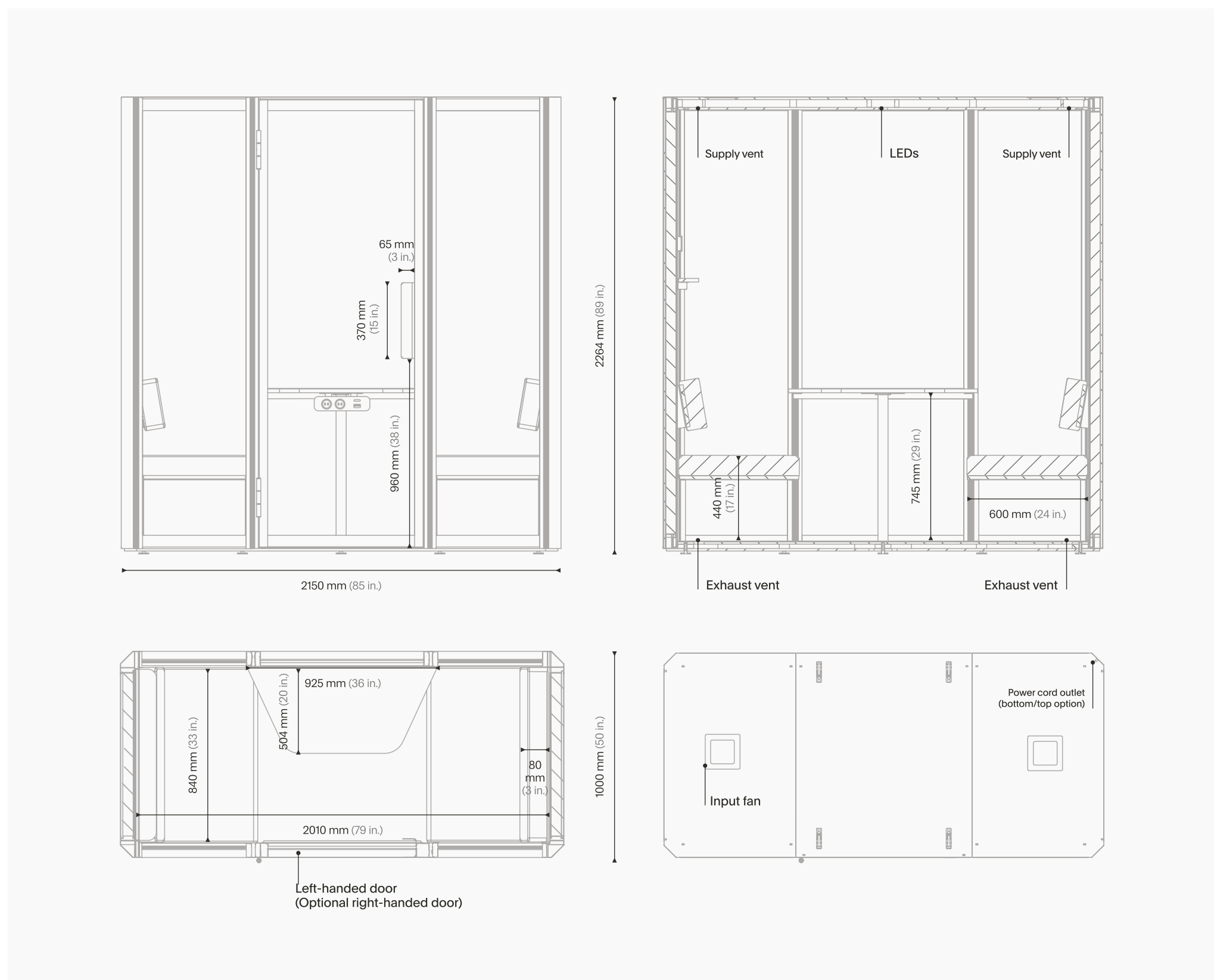
Open space

Reception

Breakout area

Other public spaces

Dimensions & weight



Pod

DIMENSIONS	EXTERIOR / INTERIOR	WEIGHT	
Width	2150 mm (85 in.) / 2010 mm (79 in.)	Pod weight	373 kg (822 lbs)
Depth	1000 mm (40 in.) / 860 mm (34 in.) + 800 mm (32 in.) with an open door	Shipment weight	430 kg (948 lbs)
Height	2264 mm (89 in.) / 2102 mm (83 in.) + 200 mm (7.9 in.) for ventilation + 36 mm (1.4 in.) with casters		

Packing (cartboard flat-packs – 10 layers)

DIMENSIONS		WEIGHT	
Width	2270 mm (89 in.)	Wooden pallet	29 kg (64 lbs)
Depth	1270 mm (50 in.)	Plywood pallet	40 kg (88 lbs)
Height	1200 mm (47 in.)		

POSSIBILITY OF STOCKING

Number of pods	2
----------------	---

Technical data

ACOUSTIC RESULTS

Speech level reduction	$D_{S,A} = 26,5$ dB, class B, ISO 23351-1
Range of level reduction D	16,9–35,5 dB (125–8000 Hz)
Sound insulation	ISO 10140-2
• Glass wall (6 mm ESG)	$R_w = 33$ dB, $R_{A1} = 32$ dB
• Solid wall	$R_w = 38$ dB, $R_{A1} = 36$ dB
Reverberation time inside	0,2 s (250–4000 Hz) – ISO 354:2005

POWER CONSUMPTION AND LIGHTING

Standby	5,7 W
Working (fan, LEDs)	40 W
Power supply voltage	220-240 VAC, 50-60 Hz
Light source	1416 mm LED strip
Brightness on the tabletop surface	400 lux
LED power consumption	Max 26,6 W
LED supply voltage	24 V DC
Color temperature / brightness	4000 K / 1980 lm/m
Light control	Occupancy sensor, auto start/stop

COMPOSITION

- Aluminium structure and steel elements
- Plywood and melamine faced chipboard
- Isolating and absorbing materials
- Tempered glass
- Felt

CERTIFICATES AND TESTS

- ISO 14001, ISO 9001
- VOC (PN-EN ISO 16000-9) and Formaldehyde (EN 717-1:2006) tested
- Formaldehyde (EN 717-1:2006) tested
- Speech reduction tested acc. to ISO 23351-1:2020
- Reaction to fire tested acc. to EN-13501-1:2018

VENTILATION

System airflow	110 m ³ /h
Nominal airflow	365 m ³ /h
Air change rate (ACPH)	30 / h
Fan emitted noise outside	36 dBA
Fan emitted noise inside	38 dBA
Ventilation operation	Occupancy sensor, auto start/stop
Fan supply voltage	24 V DC

MEDIA PORT (FPD UNIT)

Power supply voltage	220-240 VAC, 50-60 Hz
Power sockets in a mediaport	2
USB fast charger in a mediaport	TUF A+C 30 W
Max load of power sockets	10 A
Mounting system	Included, desk mount
LAN port	Possibility to route the LAN cable
Available socket types	FR / DE / UK / CH / AU / DK* / IT*

*The appearance of the media port may differ from that shown in the renderings. Parameters and features remain unchanged.

WARRANTY

We offer a 5-year warranty and a 5-year right to repair. What is more, Jetson is made entirely of easily replaceable components. So, if you ever do need to repair Jetson, it's quick, cheap, and simple.



0%
Formaldehyde
VOC tested



CE



Equipment

STANDARD EQUIPMENT

- Ventilation system
- LED light 4000K
- Occupancy sensor
- Media port with 2 power and A+C USB sockets
- Profiled tabletop
- 2x sofa with height-adjustable backrest
- Shallow shelf with display rail and magnet
- 2x wall hook
- Power cord 3 m (118 in.)

ADDITIONAL EQUIPMENT

+ Monitor hanger

A flexible mounting system designed to accommodate screens of various sizes (VESA 100-200-300), providing an ergonomic and space-efficient solution for digital collaboration.

+ Occupancy light

An external indicator light that signals when the pod is in use. The light glows red when the pod is occupied and turns off when it is available.

+ LAN cable cat. 6a

A high-performance Ethernet cable that enables stable, high-speed internet connectivity, ensuring seamless communication and efficient workflow.

+ LED light 3000 K

A warm lighting option that enhances the ambiance, creating a cozy and inviting atmosphere inside the pod.

+ Control panel

A user-friendly interface that allows easy adjustment of lighting and ventilation, ensuring a personalized and comfortable workspace tailored to individual preferences.

+ Casters

Casters that provide effortless mobility, allowing the pod to be easily repositioned. When casters are installed, the pod's total height increases by 36 mm (1.4 in.).

Equipment dimensions and weight

TABLETOP

Width	925 mm (36 in.)
Depth	504 mm (20 in.)
Height	745 mm (29 in.)
Weight	11 kg (24 lbs)
Total load	30 kg (66,1 lbs)

SOFA

Width	840 mm (33 in.)
Depth	600 mm (24 in.)
Seat height	440 mm (17 in.)
Weight	12,5 (28 lbs)
Total load	180 kg (396.8 lbs)

MONITOR HANGER (ADDITIONAL)

Width	838 mm (33 in.)
Height	429 mm (17 in.)
Total load	50 kg (110 lbs)

DISPLAY RAIL

Width	838 mm (33 in.)
Height	75 mm (3 in.)
Weight	1,4 kg (3 lbs)

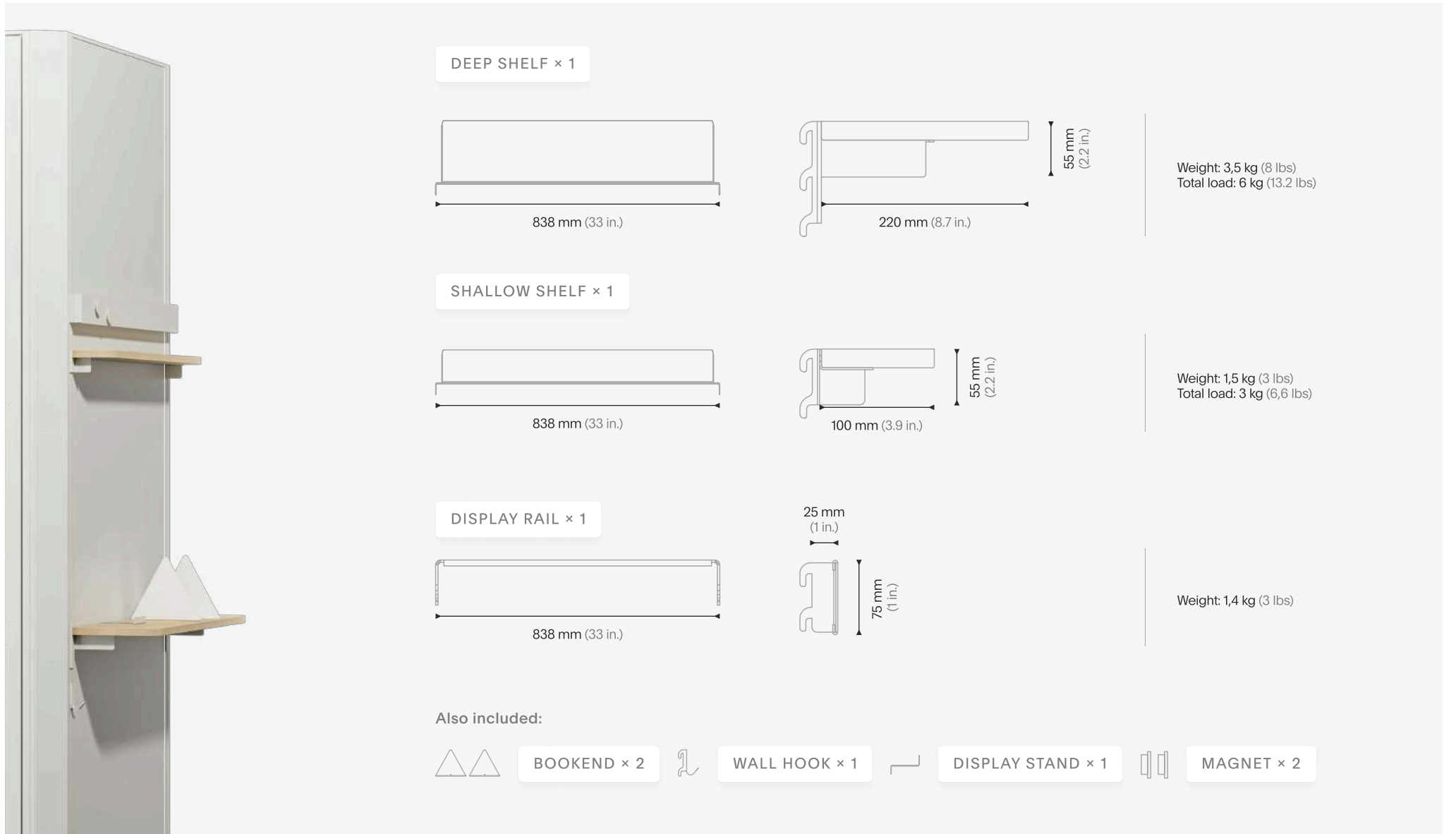
SHALLOW SHELF

Width	838 mm (33 in.)
Height	55 mm (2,2 in.)
Weight	1,5 kg (3 lbs)
Total load	3 kg (6,6 lbs)

Add-on sets

Library Set

Weight: 6,5 kg (14 lbs) | With packaging: 8 kg (18 lbs)



DEEP SHELF × 1

838 mm (33 in.)

220 mm (8.7 in.)

55 mm (2.2 in.)

Weight: 3,5 kg (8 lbs)
Total load: 6 kg (13.2 lbs)

SHALLOW SHELF × 1

838 mm (33 in.)

100 mm (3.9 in.)

55 mm (2.2 in.)

Weight: 1,5 kg (3 lbs)
Total load: 3 kg (6,6 lbs)

DISPLAY RAIL × 1

838 mm (33 in.)

25 mm (1 in.)

75 mm (1 in.)

Weight: 1,4 kg (3 lbs)

Also included:

BOOKEND × 2

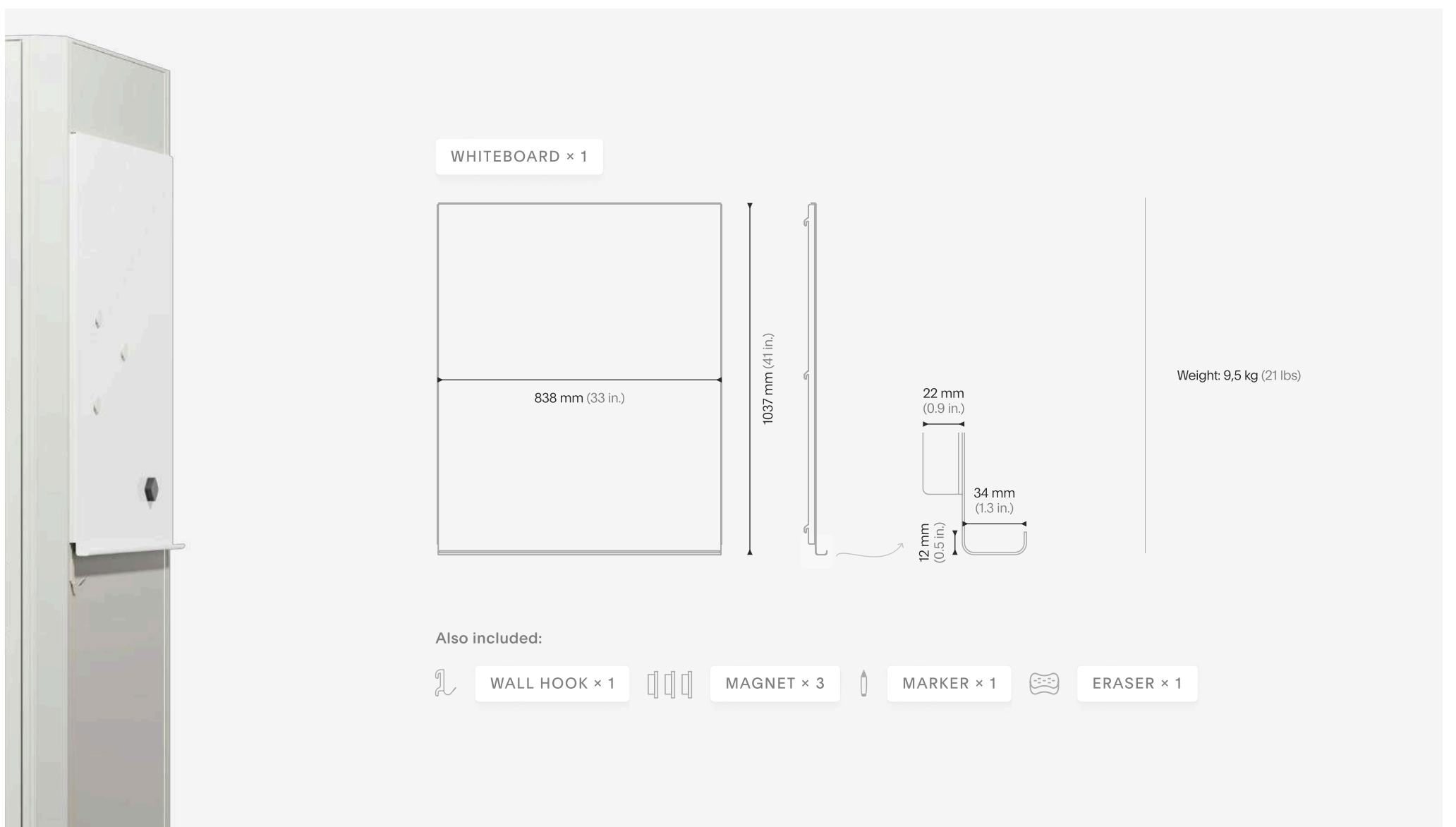
WALL HOOK × 1

DISPLAY STAND × 1

MAGNET × 2

Note Set

Weight: 10 kg (22 lbs) | With packaging: 12 kg (26 lbs)



WHITEBOARD × 1

838 mm (33 in.)

1037 mm (41 in.)

22 mm (0.9 in.)

34 mm (1.3 in.)

12 mm (0.5 in.)

Weight: 9,5 kg (21 lbs)

Also included:

WALL HOOK × 1

MAGNET × 3

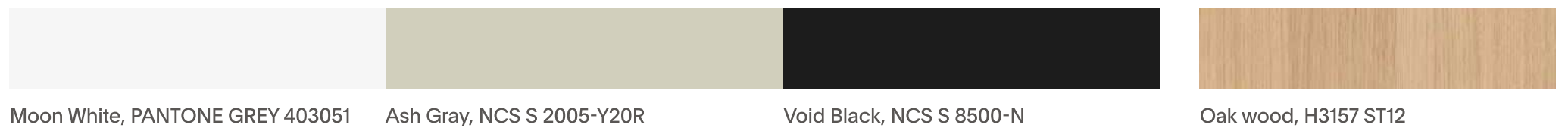
MARKER × 1

ERASER × 1

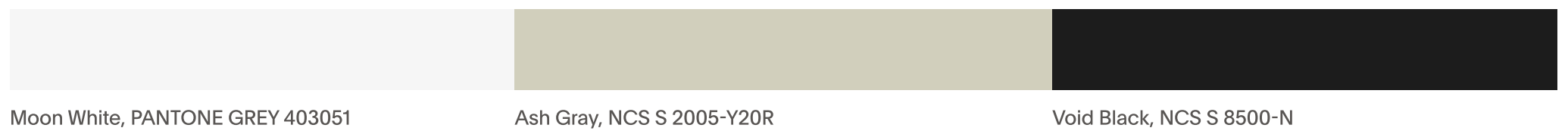
Finishes overview



1 EXTERIOR WALLS - MELAMINE



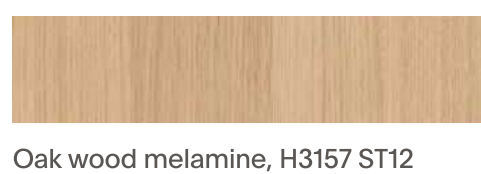
2 FRAME - ALUMINUM



3 INTERIOR WALLS AND CEILING



4 TABLETOP AND SHELVES



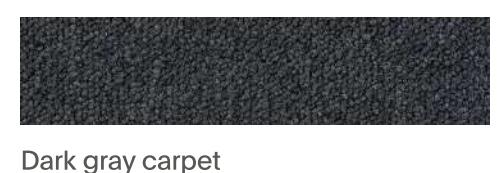
5 SEATING UPHOLSTERY



6 BOOKENDS AND MAGNETS



7 FLOOR



Inspire. Create. Deliver.