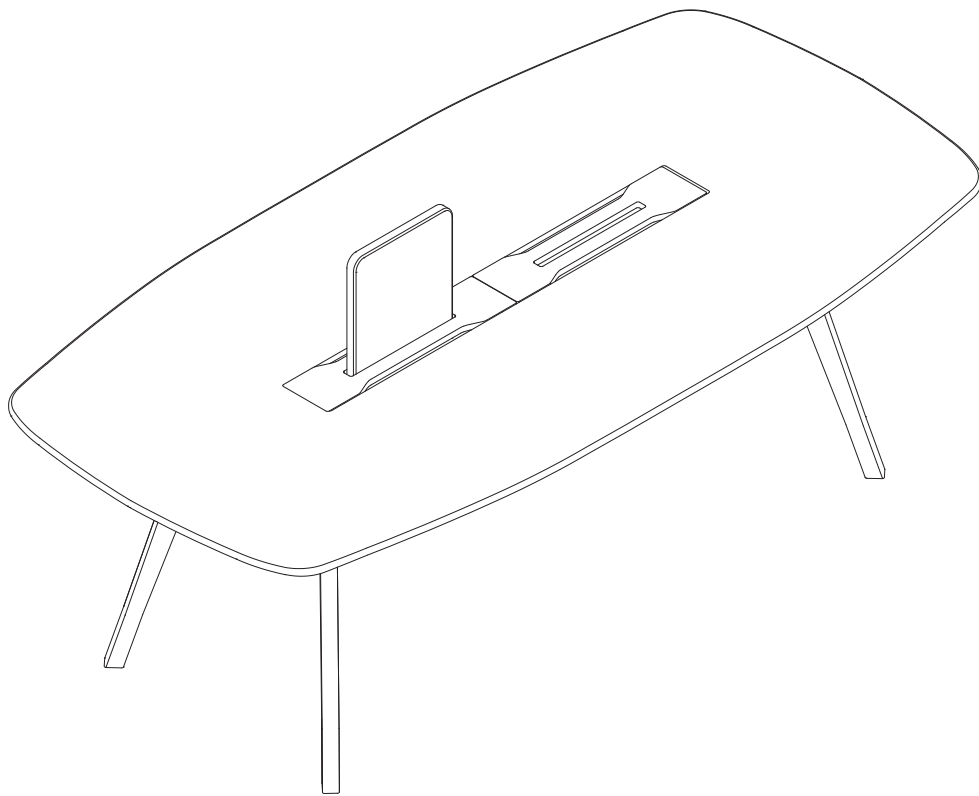


WING

central dividing panel assembly instructions

istruzioni montaggio pannello divisorio centrale

instructions de montage du panneau de séparation central

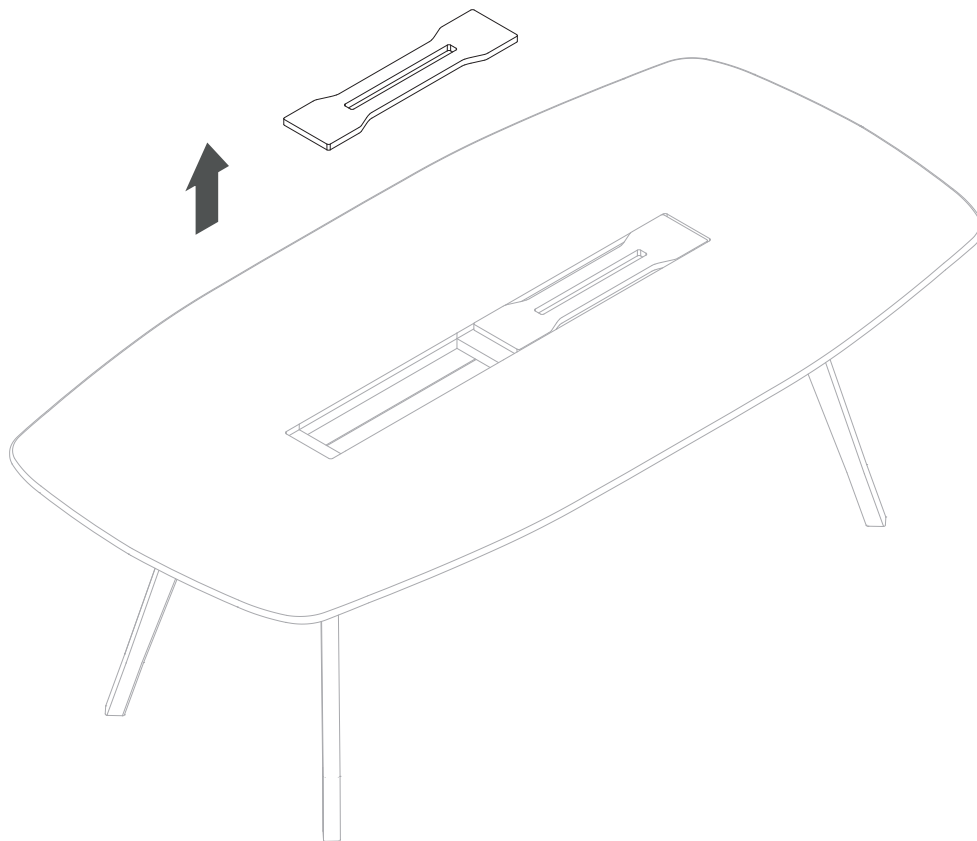


true

Step 1

Lift up the top access.

Sollevare il top access.
Soulevez le couvercle profilé.

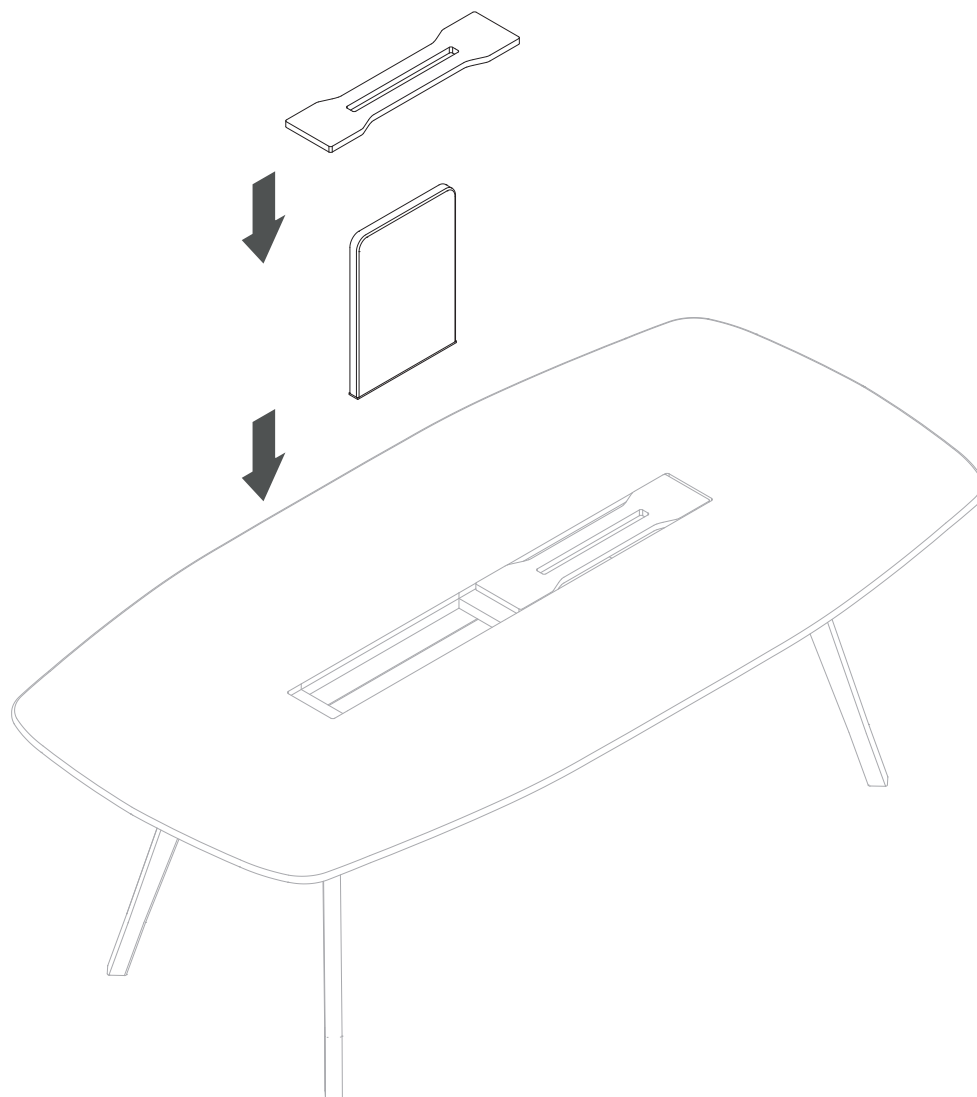


true

Step 2

Place the central partition panel on the beam.
Then slide the top access along the panel through its central recess.

Inserire il pannello divisorio centrale sulla trave.
Al termine, far scorrere il top access lungo il pannello, tramite la sua la cavità centrale.
Insérez le panneau de séparation central sur la poutre.
À la fin, faites glisser le couvercle profilé long du panneau, par sa cavité central.

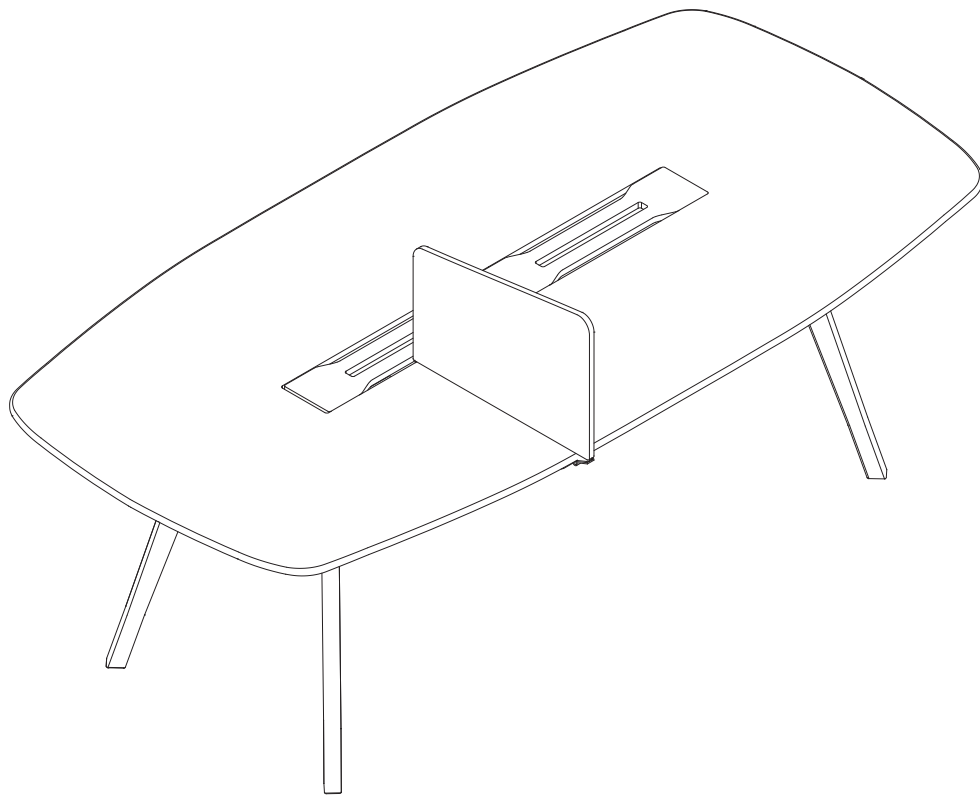


true

WING

side dividing panel assembly instructions

istruzioni montaggio pannello divisorio laterale
instructions de montage du panneau de séparation latéral

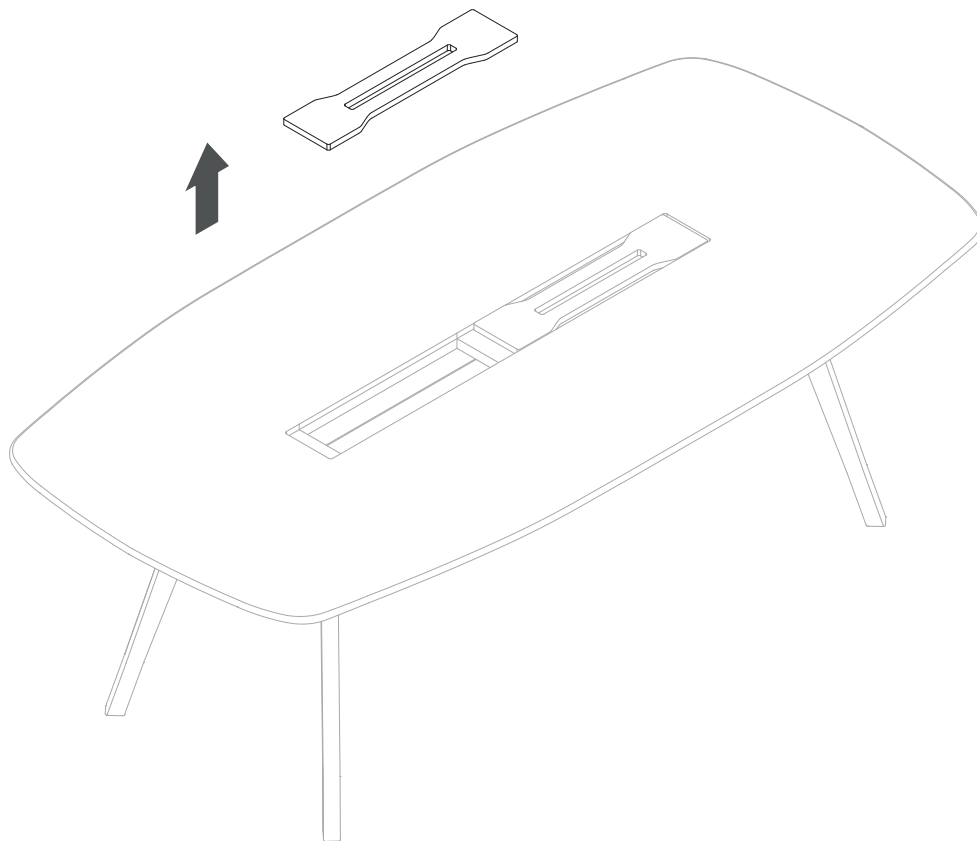


true

Step 1

Lift up the top access.

Sollevare il top access.
Soulevez le couvercle profilé.

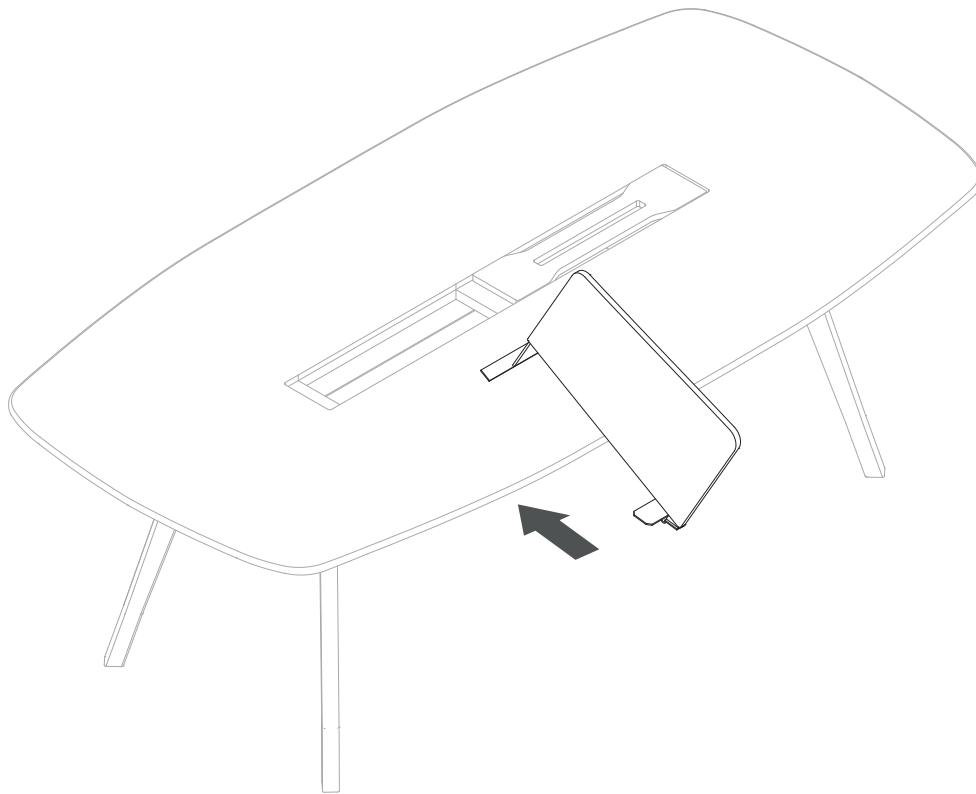


true

Step 2

Tilt the panel slightly and bring it closer to the edge of the table top along the desired direction.
Keep it perpendicular along the beam where the top access was previously removed.

Inclinare leggermente il pannello e avvicinarlo al bordo del piano lungo la direzione desiderata.
Avere cura di rimanere perpendicolari lungo la trave dove è stato rimosso precedentemente il top access.
Inclinez légèrement le panneau et approchez-le au bord du plateau long de la direction souhaitée.
Prenez soin de rester perpendiculaires long de la poutre où le couvercle profilé a été retiré précédemment.

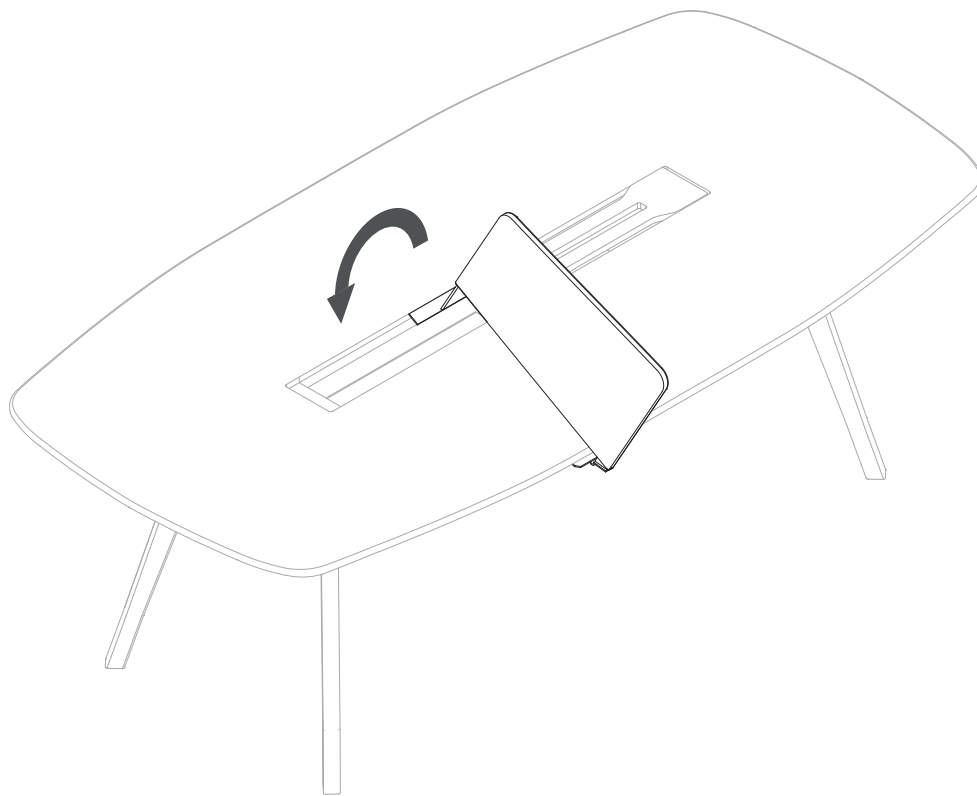


true

Step 3

Once the position along the edge of the table top has been chosen, lower the panel until it rests on the beam.
The side partition panel is fixed to the beam by magnets system.

Una volta scelta la posizione lungo il bordo del piano, abbassare il pannello fino a poggiarlo sulla trave.
Il pannello divisorio laterale viene fissato alla trave tramite un sistema di calamite.
Après avoir choisi la position long du bord du plateau, baissez le panneau jusqu'à le poser sur la poutre.
Le panneau de séparation latéral est fixé à la poutre par un système d'aimants.

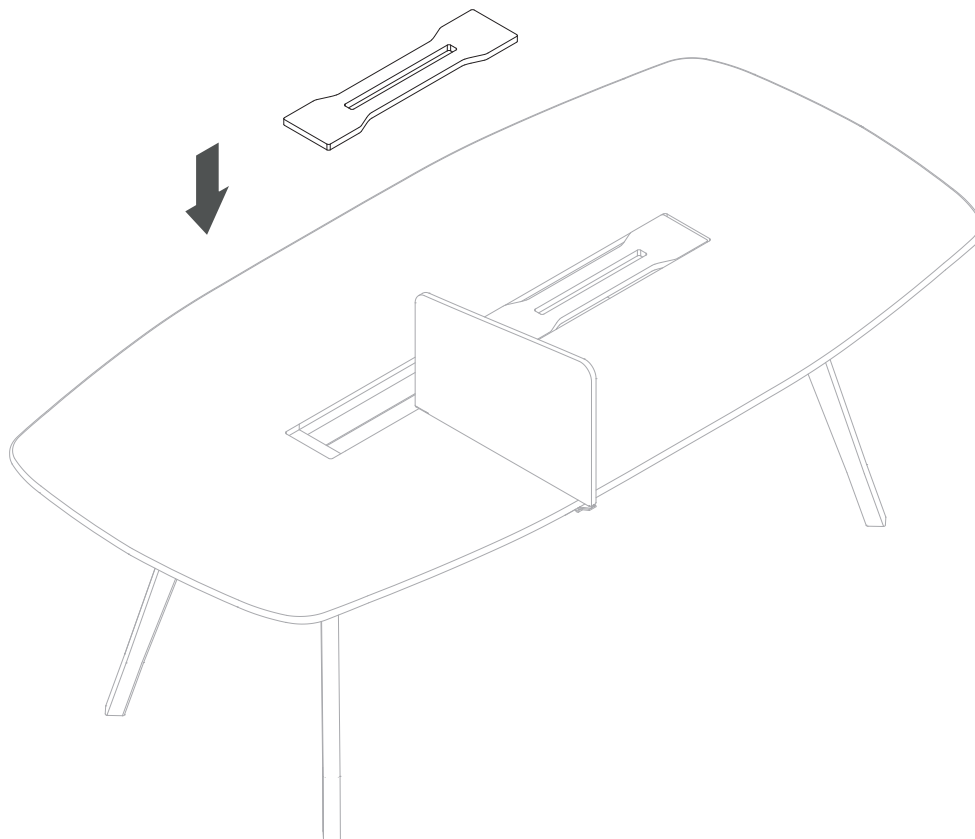


true

Step 4

Reinsert the previously removed top access.

Re-inserire il top access precedentemente rimosso.
Réinsérez le couvercle profilé précédemment retiré.

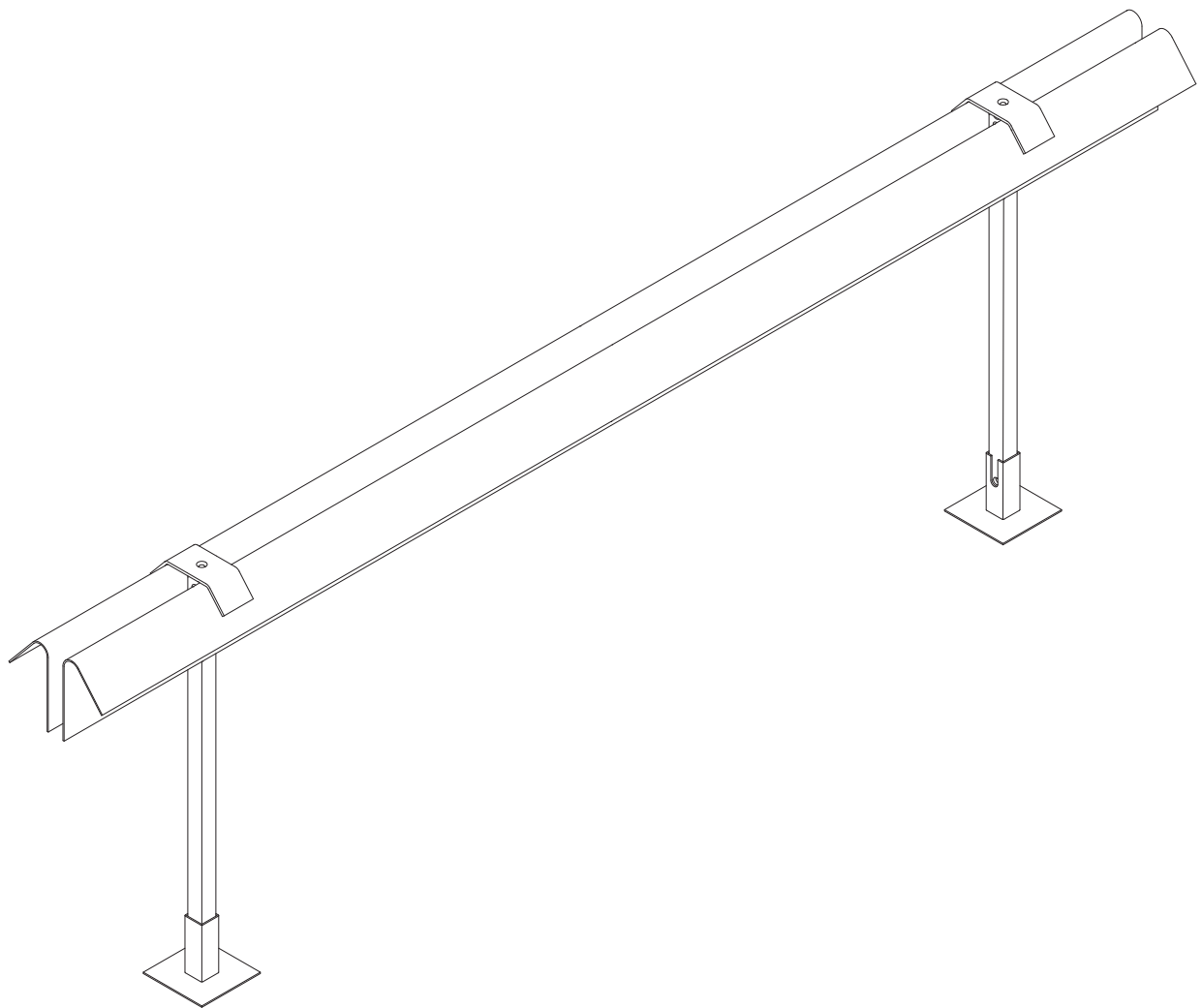


true

WING

Wing lamp assembly instructions

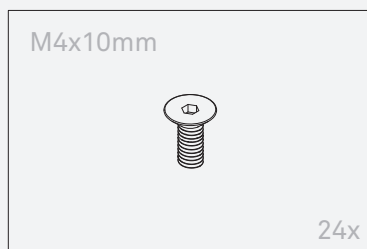
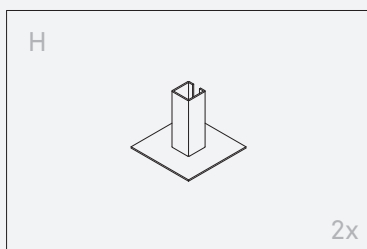
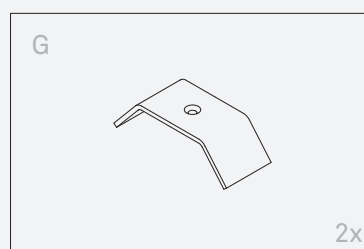
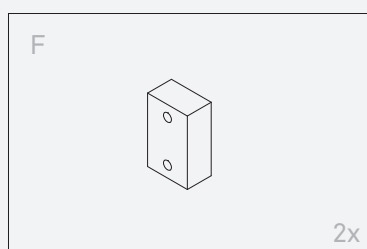
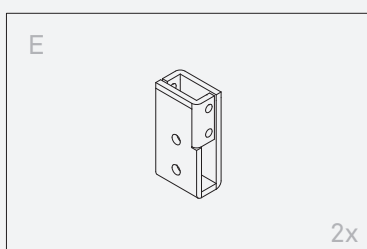
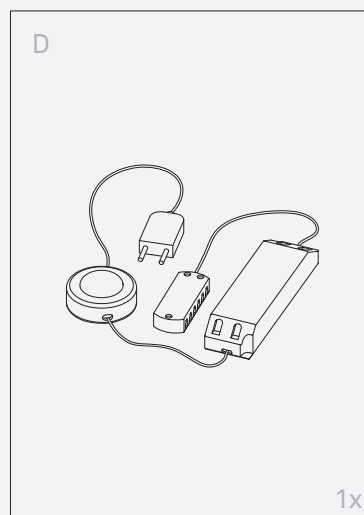
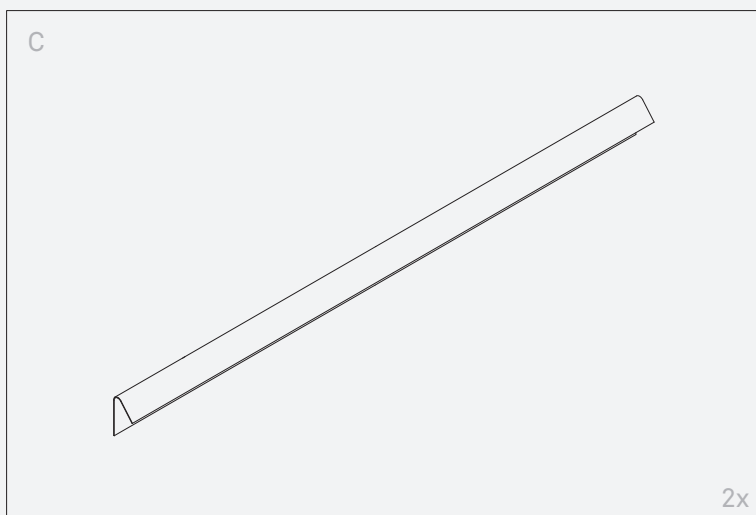
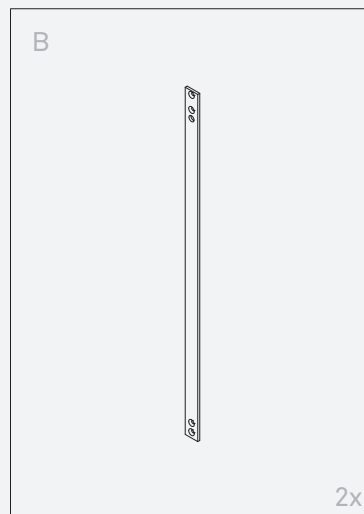
istruzioni montaggio lampada Wing
instructions de montage de la lampe Wing



true

Components

Componenti | Éléments



Step 1

Unroll the LED lamp wire enough to insert it in the appropriate cavities of the lampshade C, as set out in detail.
Secure the LED lamp to the lampshade C using some double-sided adhesive, on the marked points ("x").
Repeat the same procedure with the second available lampshade C and the LED lamp.

Srotolare il cavo della lampada LED a sufficienza per inserirlo nelle apposite cavità del paralume C, come indicato in dettaglio.

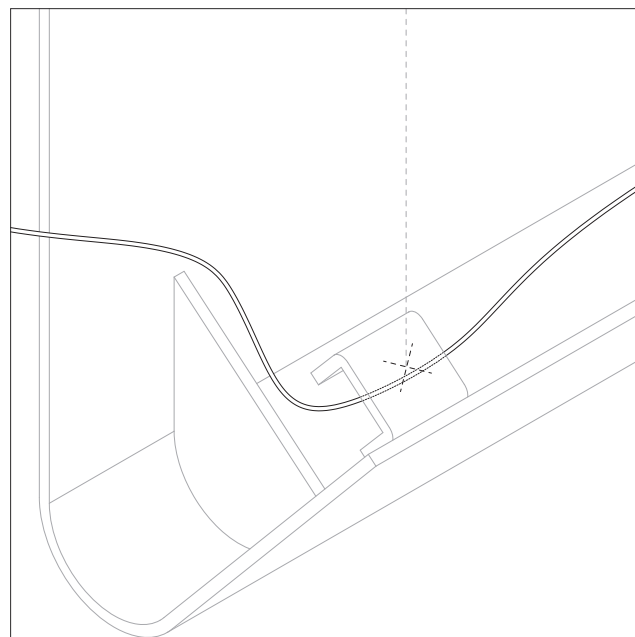
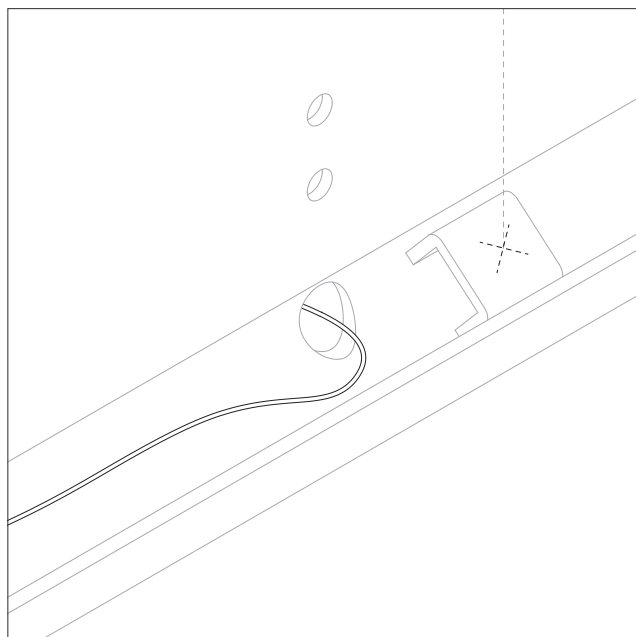
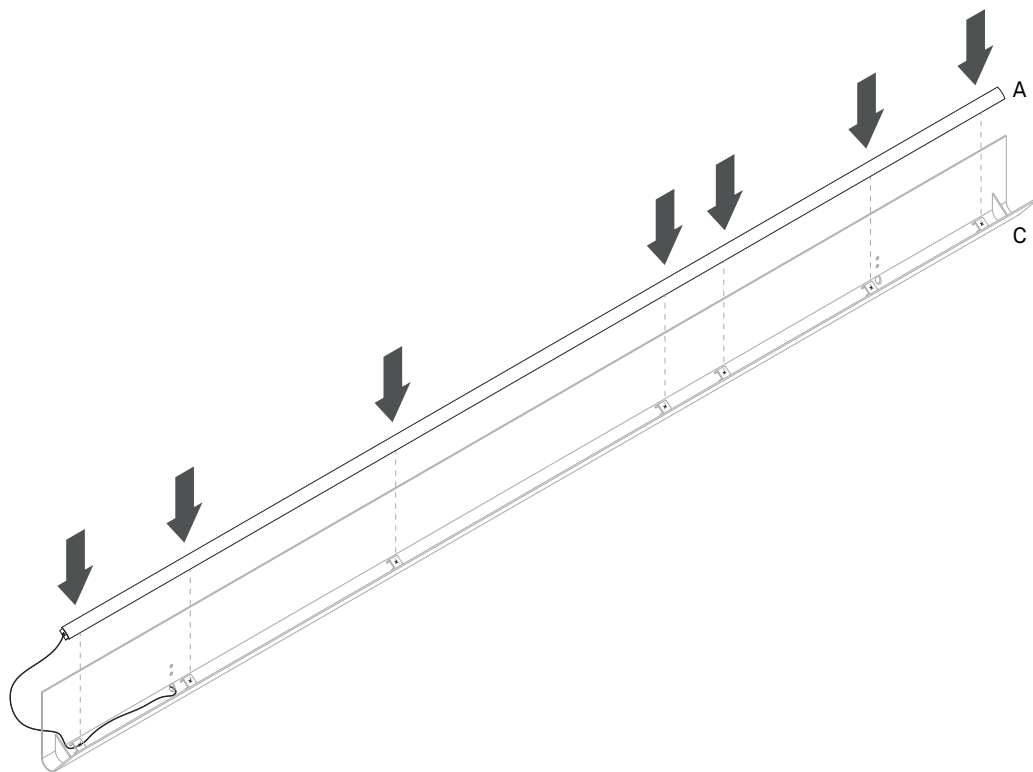
Fissare la lampada LED al paralume C tramite del biadesivo, sopra i punti contrassegnati ("x").

Ripetere lo stesso procedimento con il secondo paralume C e la seconda lampada LED a disposizione.

Déroulez à suffisance le câble de la lampe pour l'insérer dans les cavités appropriées de l'abat-jour C, comme indiqué en détail.

Fixez la lampe LED à l'abat-jour avec un peu d'adhésif double face au-dessus des points marqués ("x").

Répétez la même procédure avec le deuxième abat-jour C et la deuxième lampe LED disponible.

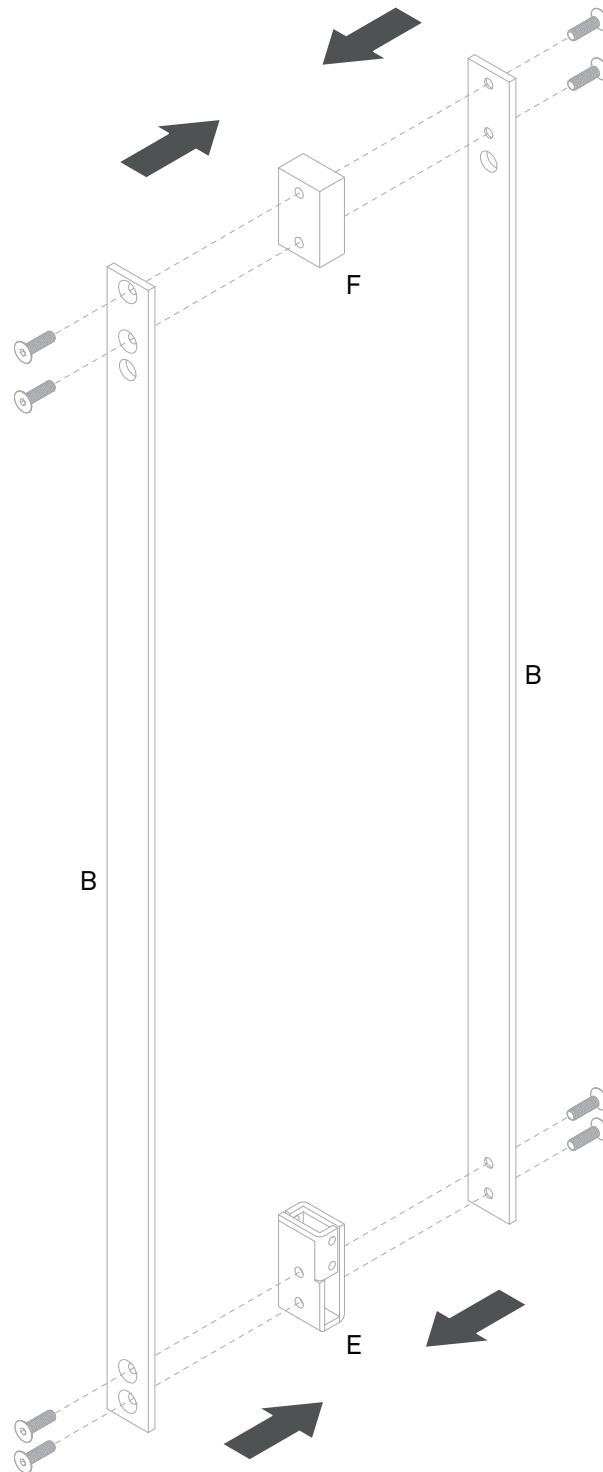


true

Step 2

Secure elements E and F to elements B through the 8 M4x10mm screws.
Repeat the same procedure with the other available elements B, E and F.

Fissare gli elementi E e F ai due elementi B tramite le 8 viti M4x10mm.
Ripetere lo stesso procedimento con gli altri elementi B, E ed F a disposizione.
Fixez les éléments E et F aux deux éléments B avec les 8 vis M4x10mm.
Répétez la même procédure avec les autres éléments B, E et F disponibles.



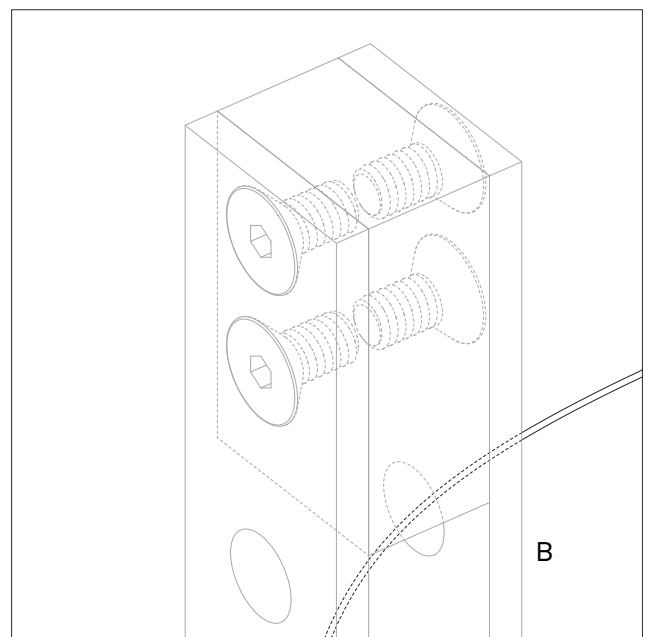
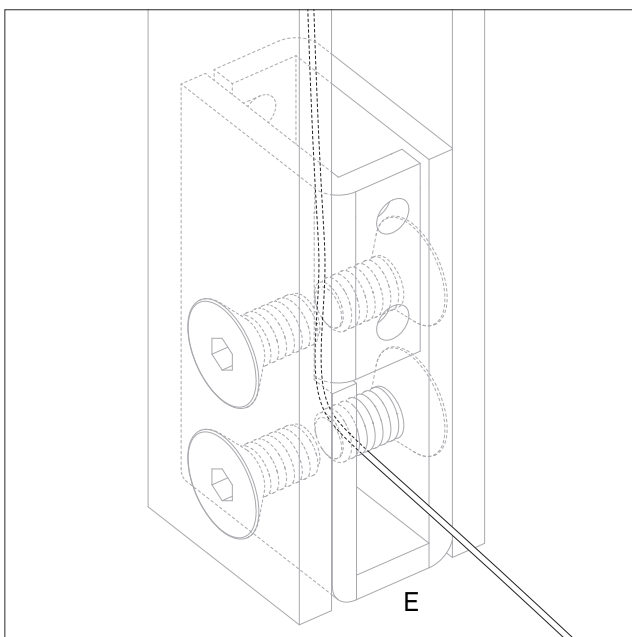
true

Step 3

Insert the LED lamp wire through the element E making it come out into the free hole of element B.

Inserire il cavo della lampada LED attraverso l'elemento E facendolo fuoriuscire nel foro libero dell'elemento B.

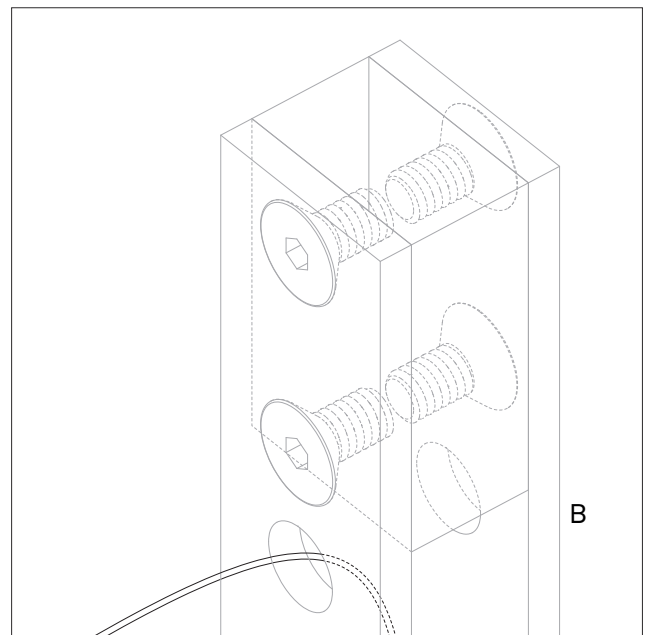
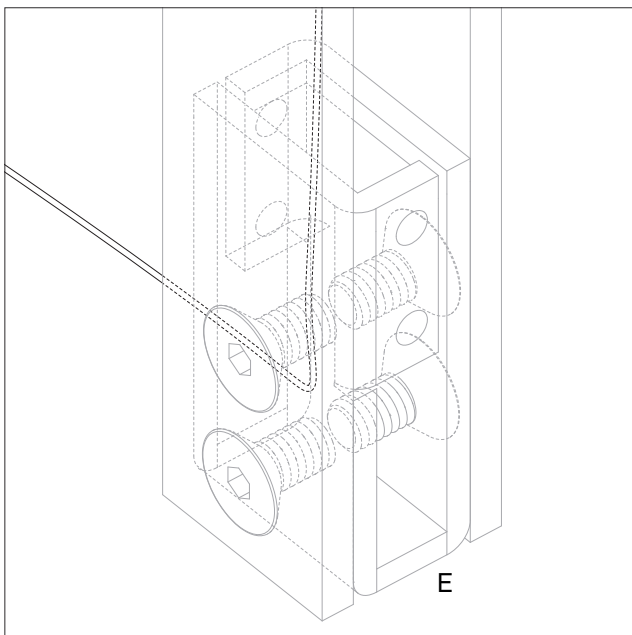
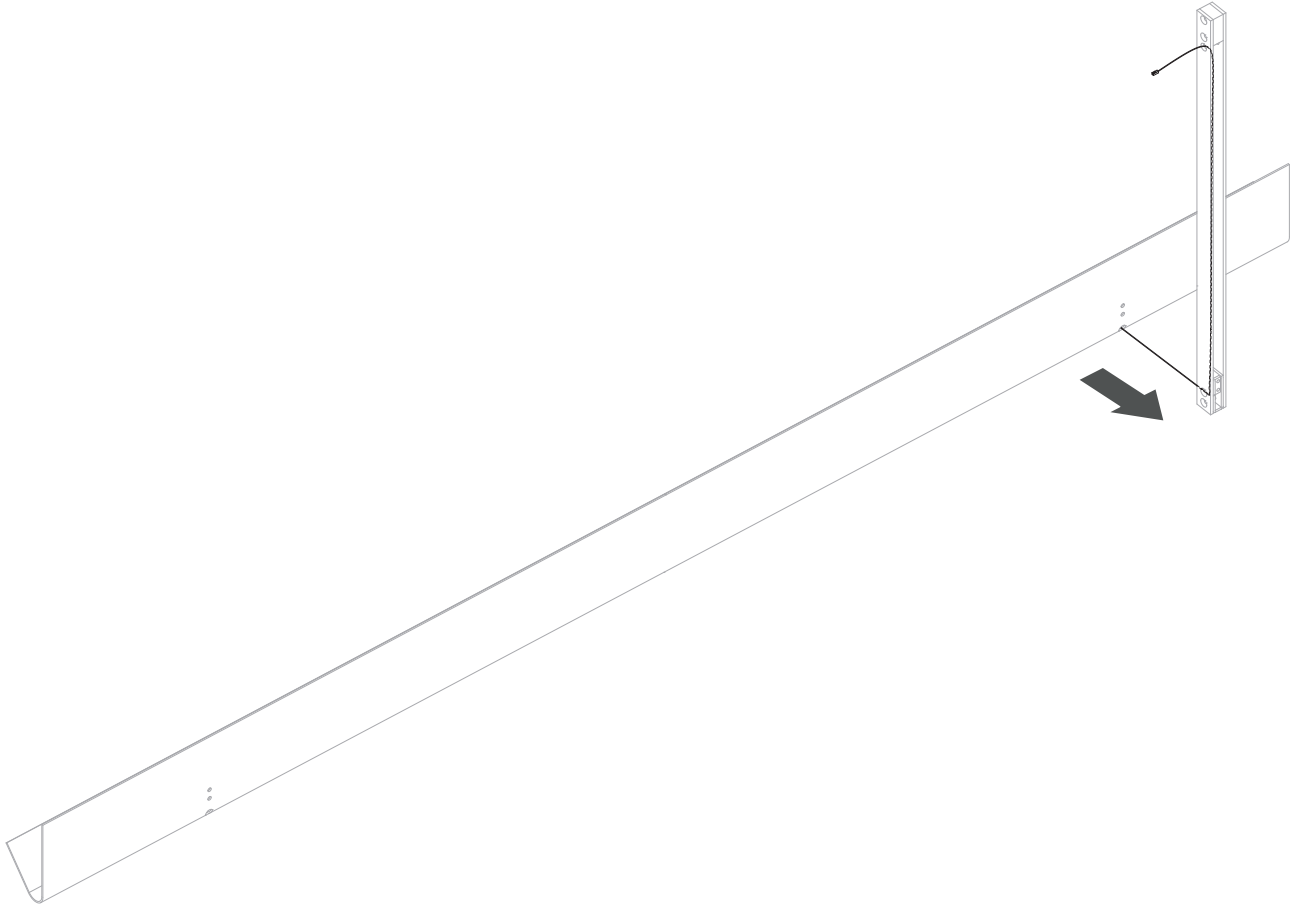
Insérez le câble de la lampe LED par l'élément E en le faisant sortir dans le trou disponible de l'élément B.



Step 4

Repeat the procedure of step 3 with the other available elements A,B,C,E,F.

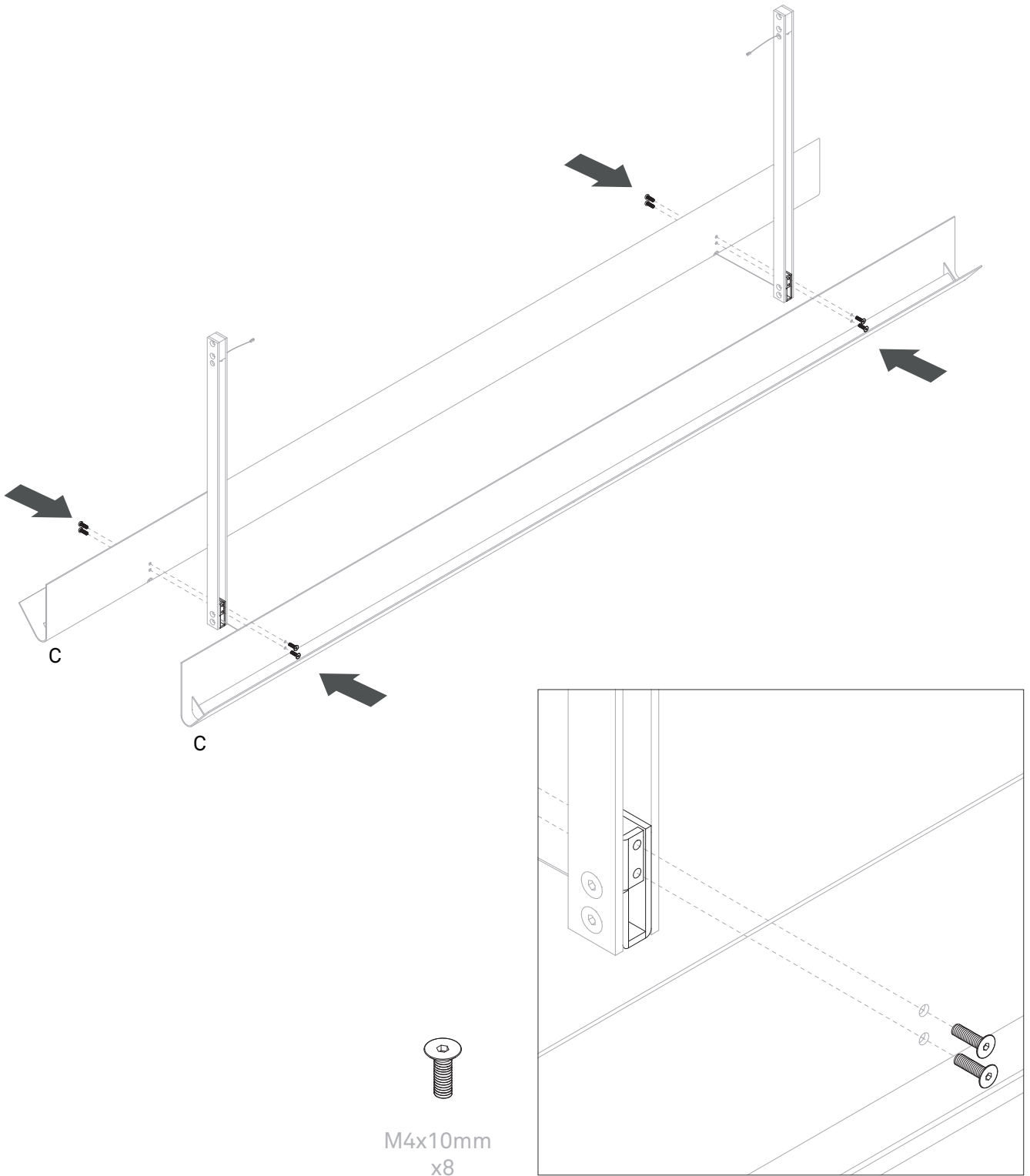
Ripetere il procedimento dello step 3, con gli altri elementi A,B,C,E,F a disposizione.
Répétez la même procédure de l'étape 3 avec les autres éléments A,B,C,E,F disponibles.



Step 5

Secure, from the inside, the two lampshades C to the two freshly installed structures, through the 8 M4x10mm screws.

Fissare, dall'interno, i due paralumi C alle due strutture appena installate, tramite le 8 viti M4x10mm.
Fixez, de l'intérieur, les deux abat-jour C aux deux structures nouvellement installées, avec les 8 vis M4x10mm.

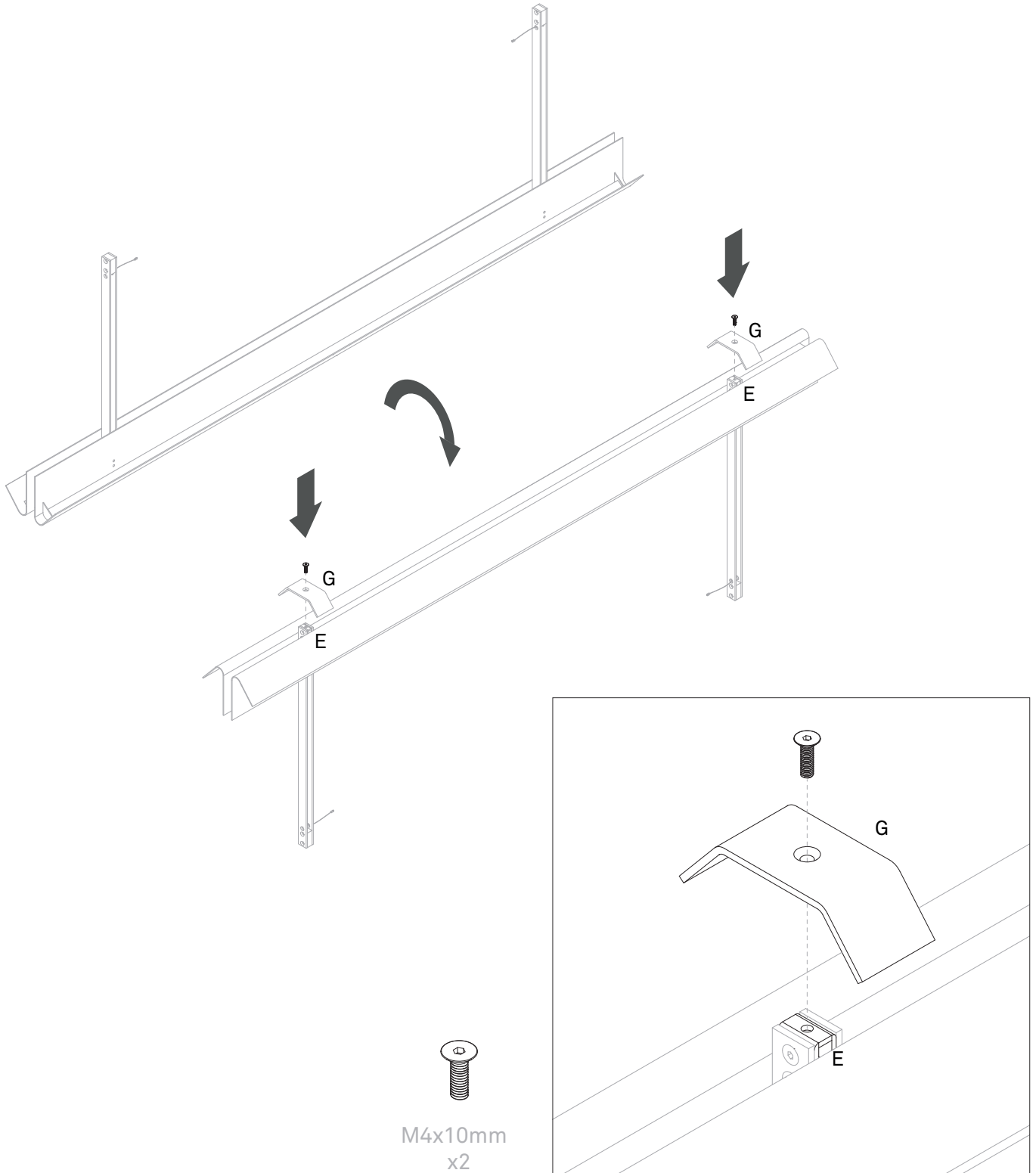


true

Step 6

Turn the structure upside down and secure, from the top, the elements G to the elements E through the 2 M4x10mm screws.

Capovolgere la struttura e fissare, da sopra, gli elementi G agli elementi E con le 2 viti M4x10mm.
Retournez la structure et fixez, par-dessus, les éléments G aux éléments E avec les 2 vis M4x10mm.



true

Step 7

Remove the 2 lateral top accesses from the top of the table.

Secure the two elements H, inside the beam of the table, through some magnets.

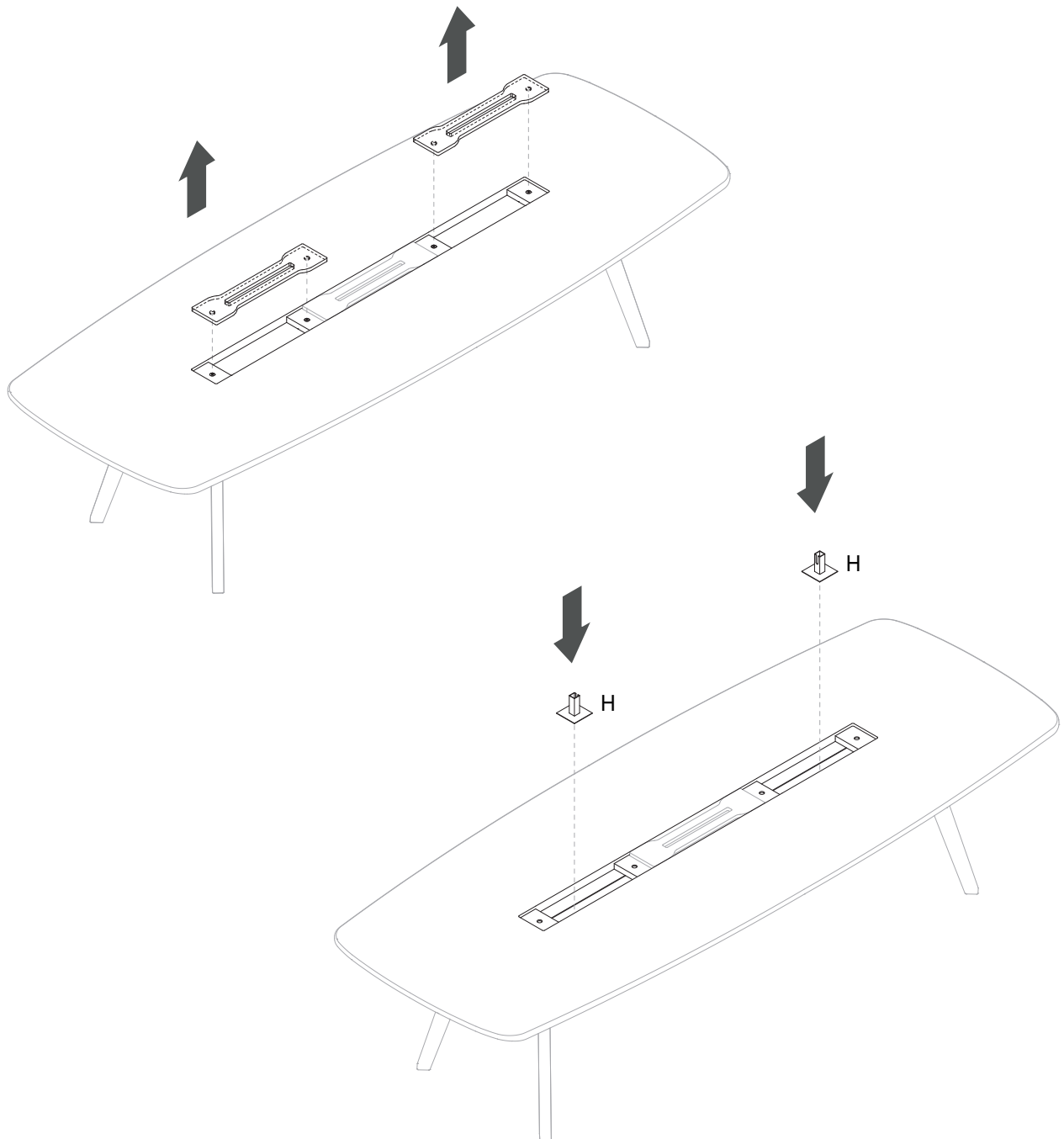
The 2 elements H must be equidistant to the columns of the previously installed structure.

Estrarre i 2 top access laterali dal piano del tavolo. Fissare i due elementi H, all'interno della trave del tavolo, tramite calamite.

I due elementi H devono essere equidistanti alle colonne della struttura precedentemente installata.

Retirez les 2 top accesses latérales du plateau de la table. Fixez les 2 éléments H, à l'intérieur de la poutre, par des aimants.

Les 2 éléments H doivent être équidistants aux colonnes de la structure nouvellement installée.



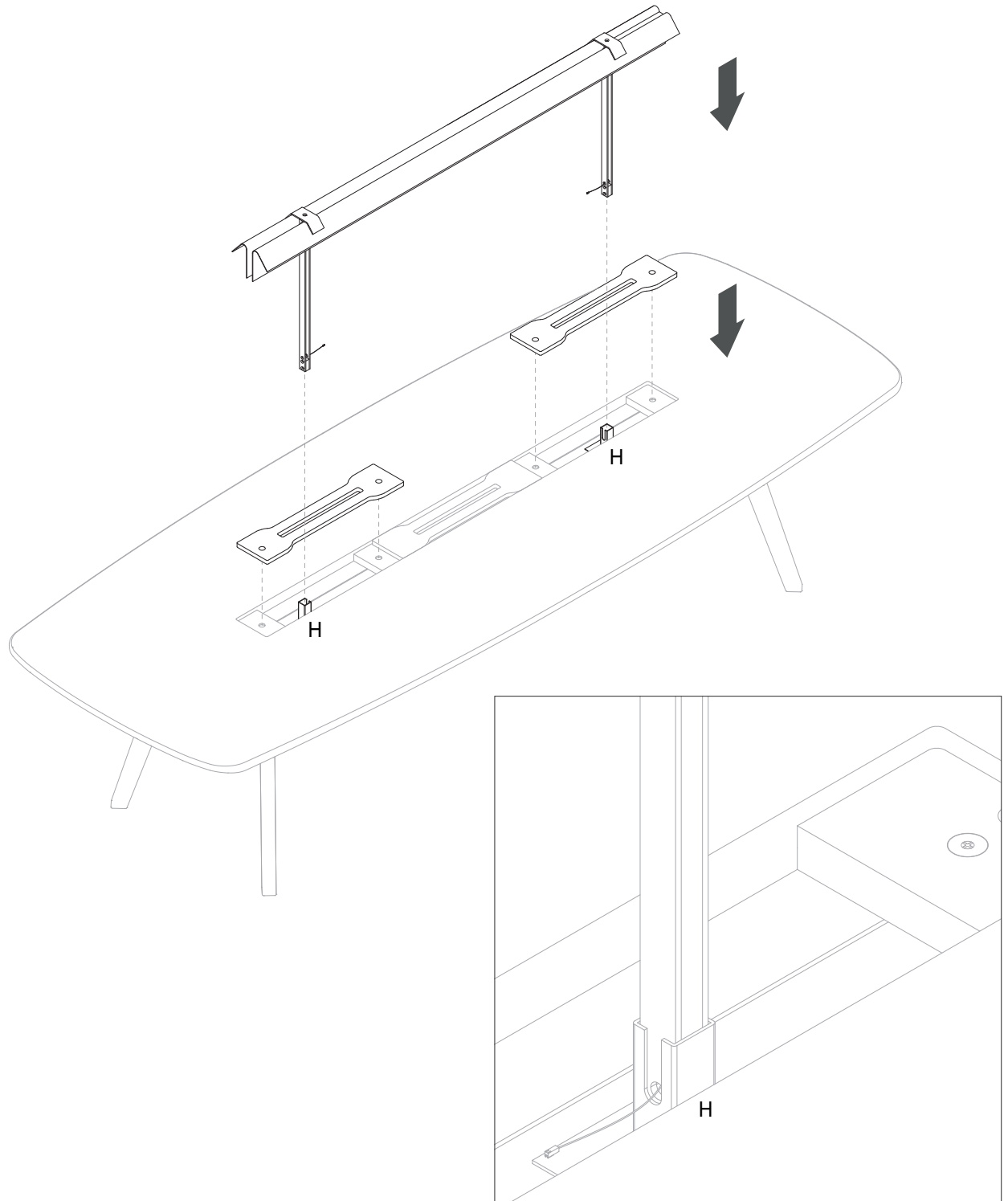
true

Step 8

Put the freshly installed structure inside elements H, through the slots of the top access.
Take care to let the wire slide into the appropriate slots of elements H.

Inserire la struttura appena installata all'interno degli elementi H, attraverso le fessure dei top access.
Avere cura di far scorrere il cavo nelle apposite cavità degli elementi H.

Placez la structure nouvellement installée à l'intérieur des éléments H par les fentes des top access.
Prenez soin de faire glisser le câble dans les cavités appropriées des éléments H.



true

Step 9

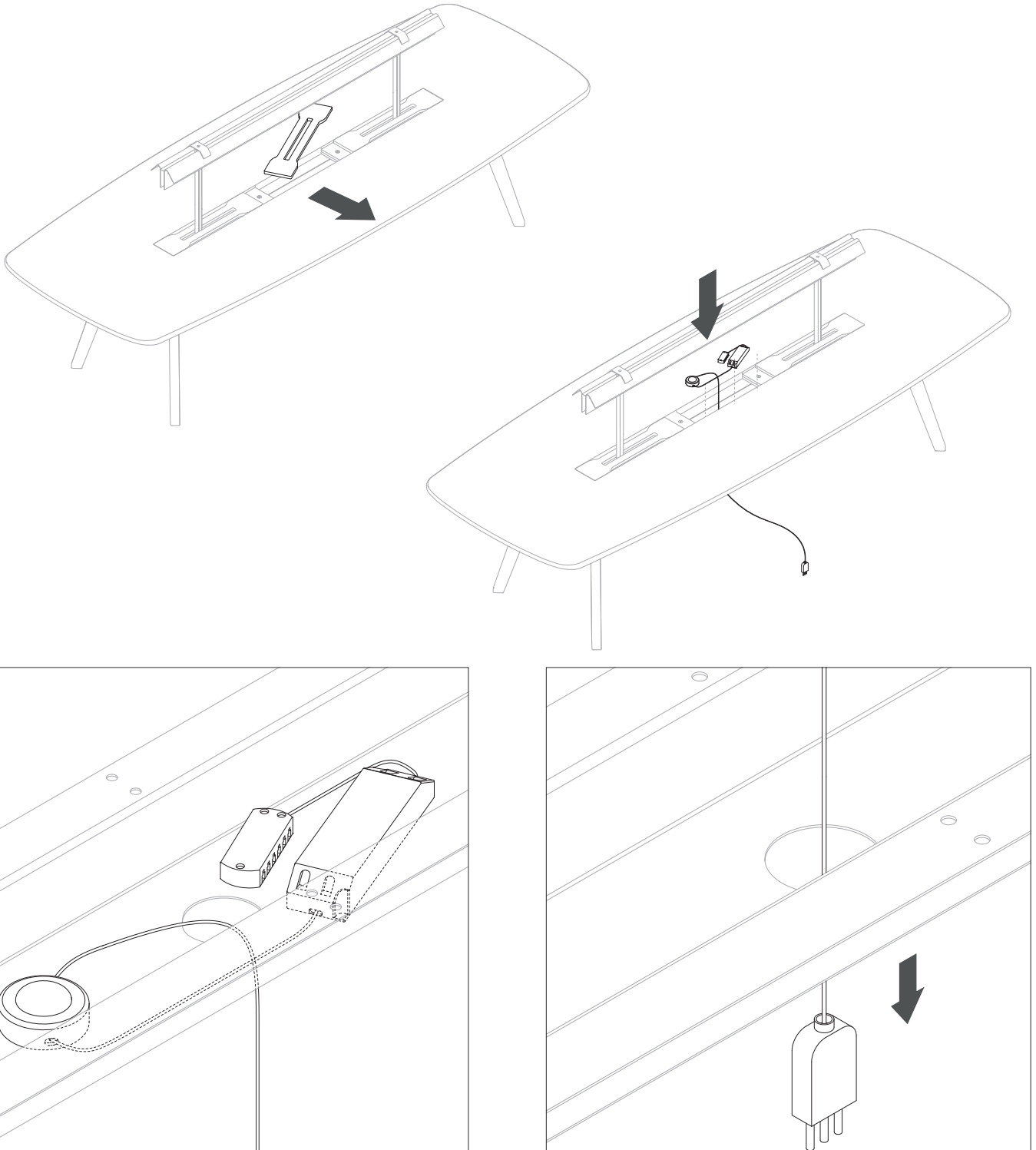
Remove the central top access and put elements D on the beam.
Let the wire of the plug gliss through the central hole of the beam and plug it into a power socket.

Rimuovere il top access centrale e poggiare sulla trave gli elementi D.

Far scorrere il filo della spina elettrica attraverso il foro centrale della trave e collegarlo a una presa di corrente.

Retirez le top access central et placez sur la poutre les éléments D.

Faites glisser le câble de la prise électrique par le trou central de la poutre et connectez-le à une prise de courant.



true

Step 10

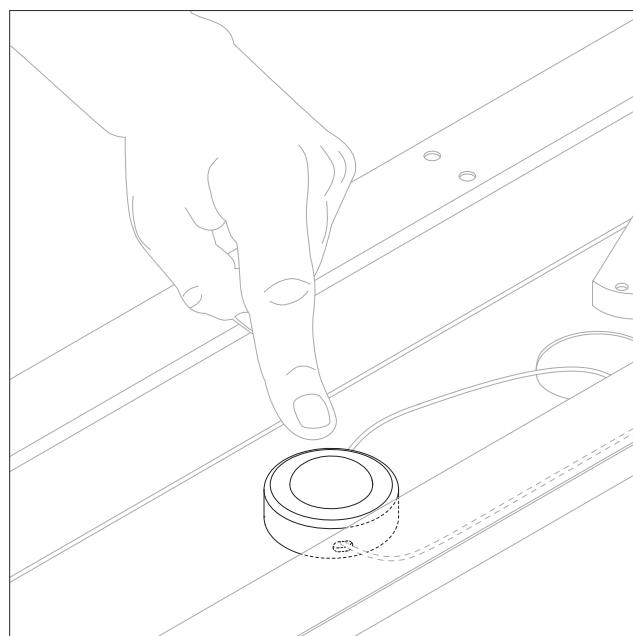
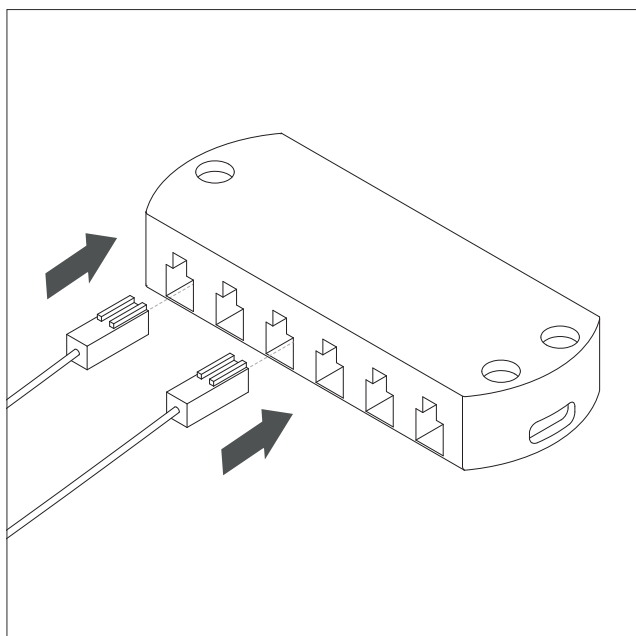
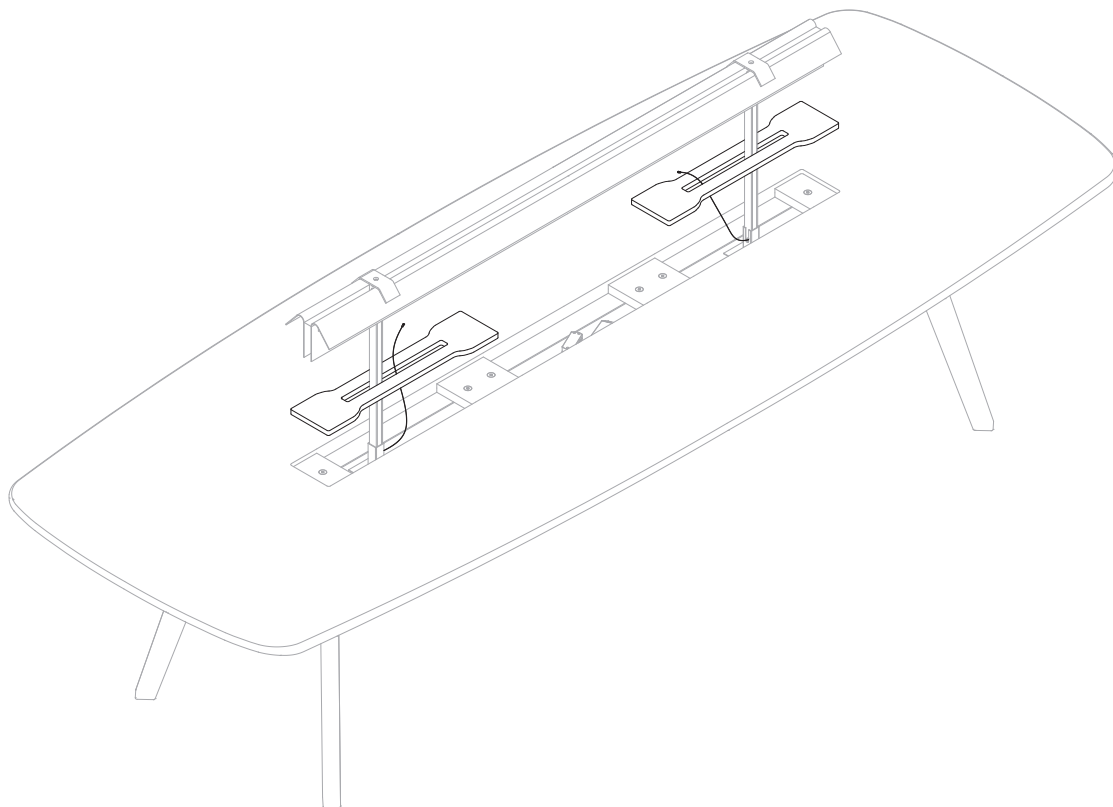
Lift the lateral top accesses and through their slots, remove the wires of the LED lamp to plug them into the charger.
Now you can turn on or turn off the lamp, by pressing the appropriate button of the switch.

Alzare i top access laterali e attraverso le loro fessure, estrarre i cavi della lampada LED per inserirli nel caricatore.

A questo punto potete accendere o spegnere la lampada, premendo sull'apposito bottone dell'interruttore.

Levez les top accesses latérales et par leurs fentes, retirez les câbles de la lampe LED pour les insérer dans le chargeur.

Maintenant vous pouvez allumer or éteindre la lampe, en appuyant sur le bouton approprié de l'interrupteur.

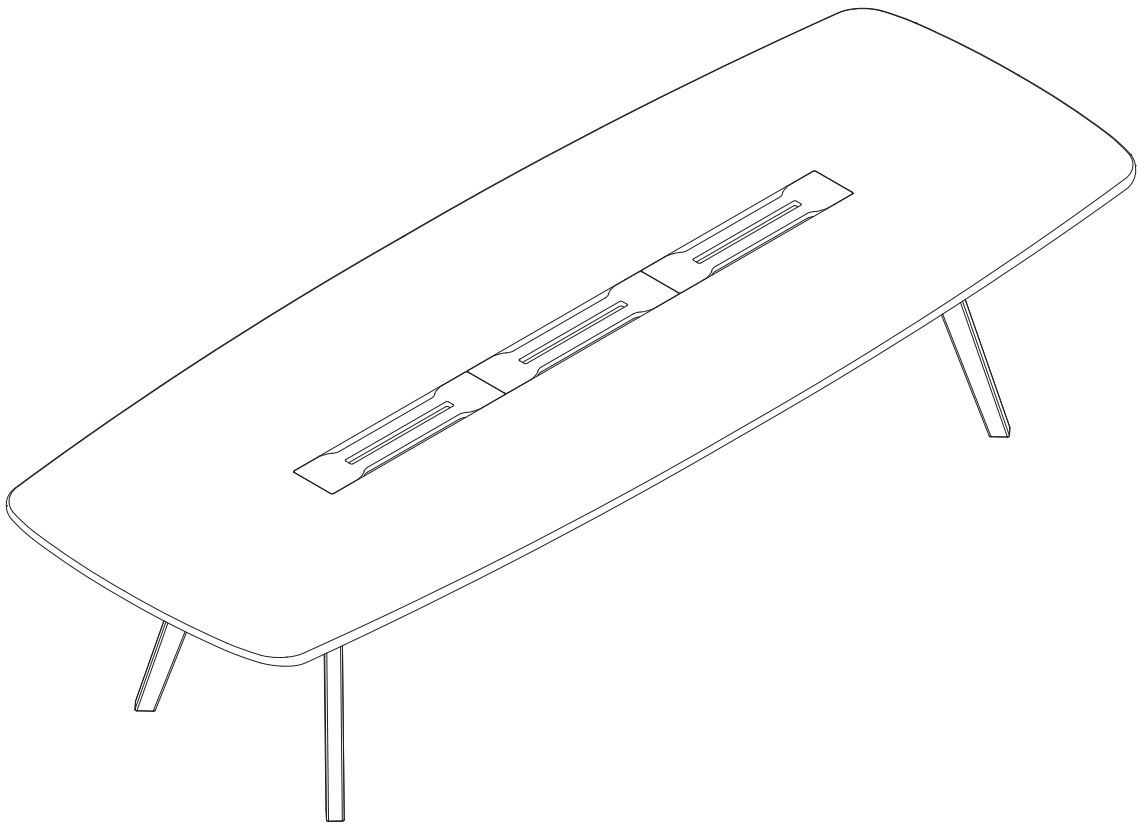


true

WING

table assembly instructions

Istruzioni montaggio tavolo
instructions de montage de la table



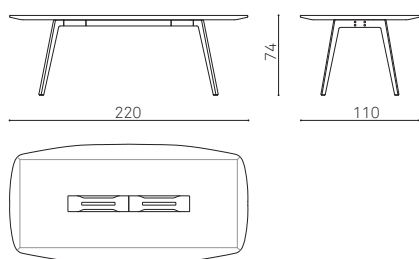
true

The installation procedure shown here refers to the following Wing products:

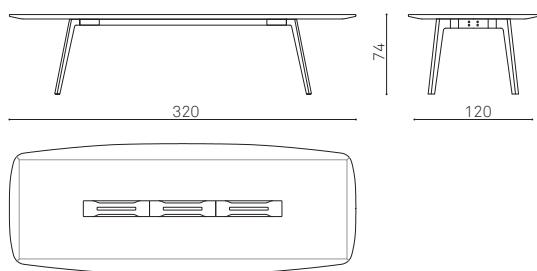
Il procedimento di installazione qui illustrato è riferito ai seguenti prodotti Wing:

La procédure d'installation présentée ici concerne les produits Wing suivants :

MEETING

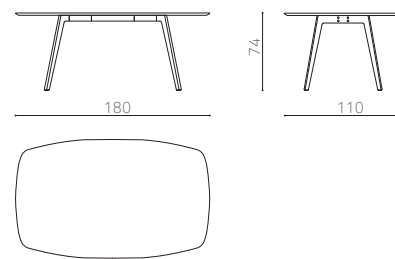


WI 220

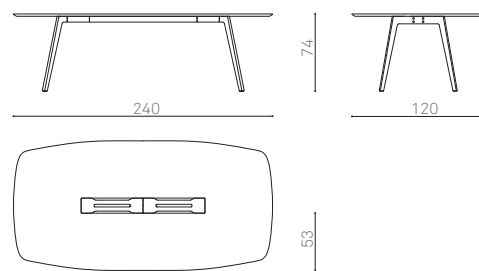


WI 320

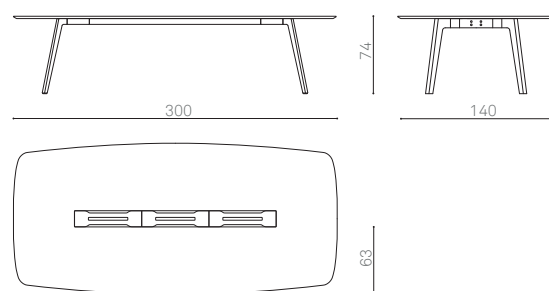
WORKING TABLE



WI 180

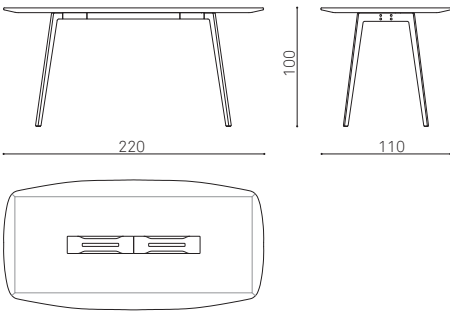


WI 240

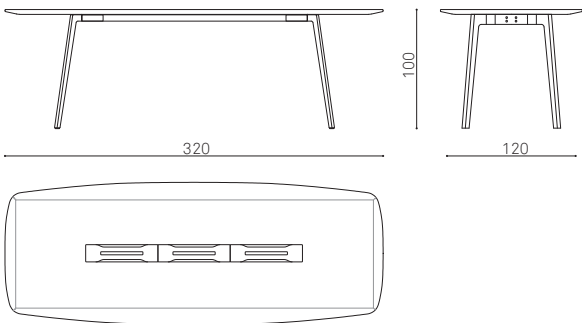


WI 300

HIGH MEETING

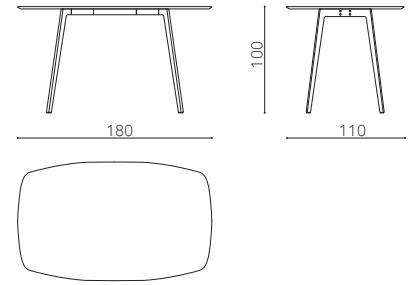


WI 220H

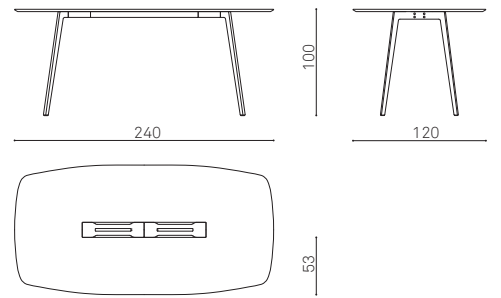


WI 320H

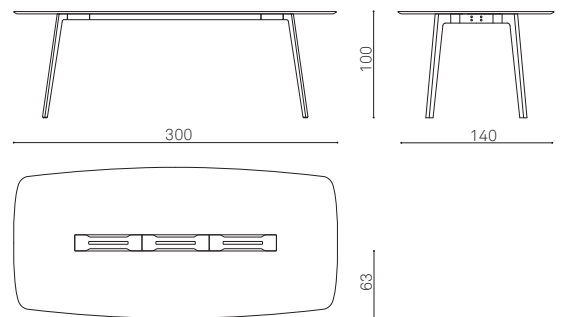
HIGH WORKING TABLE



WI 180H



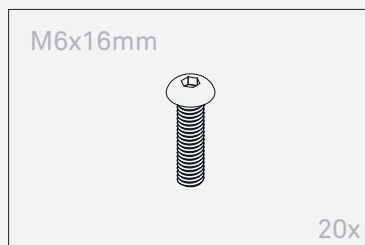
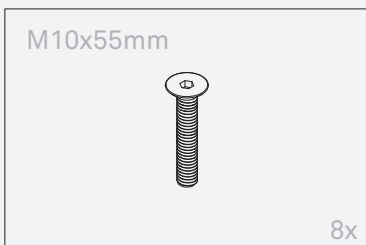
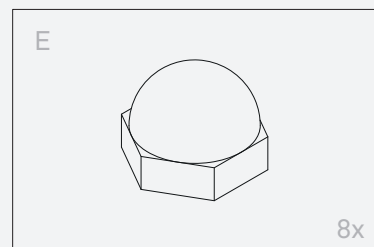
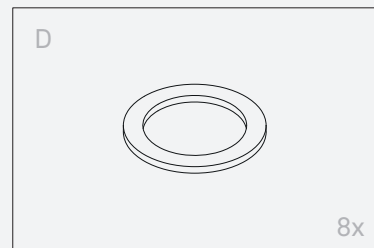
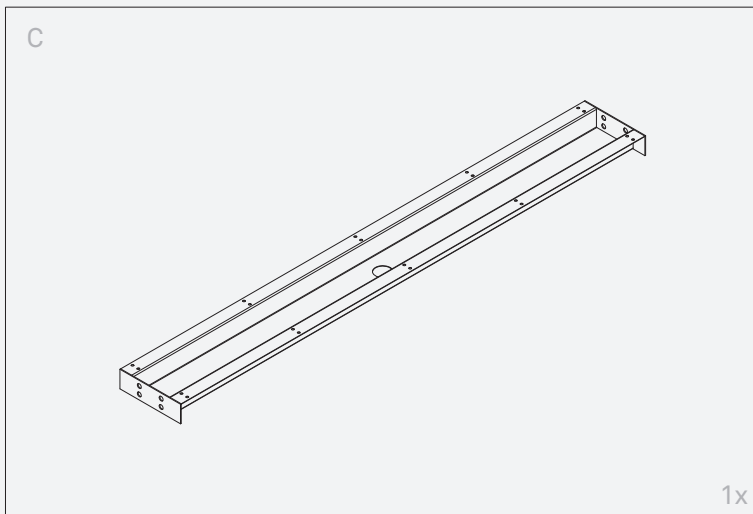
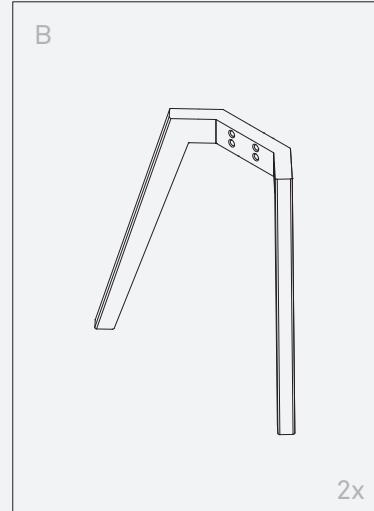
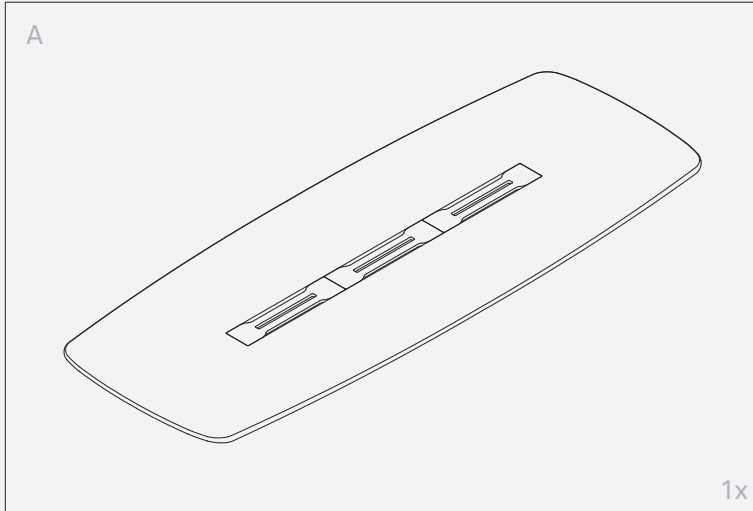
WI 240H



WI 300H

Components

Componenti | Éléments

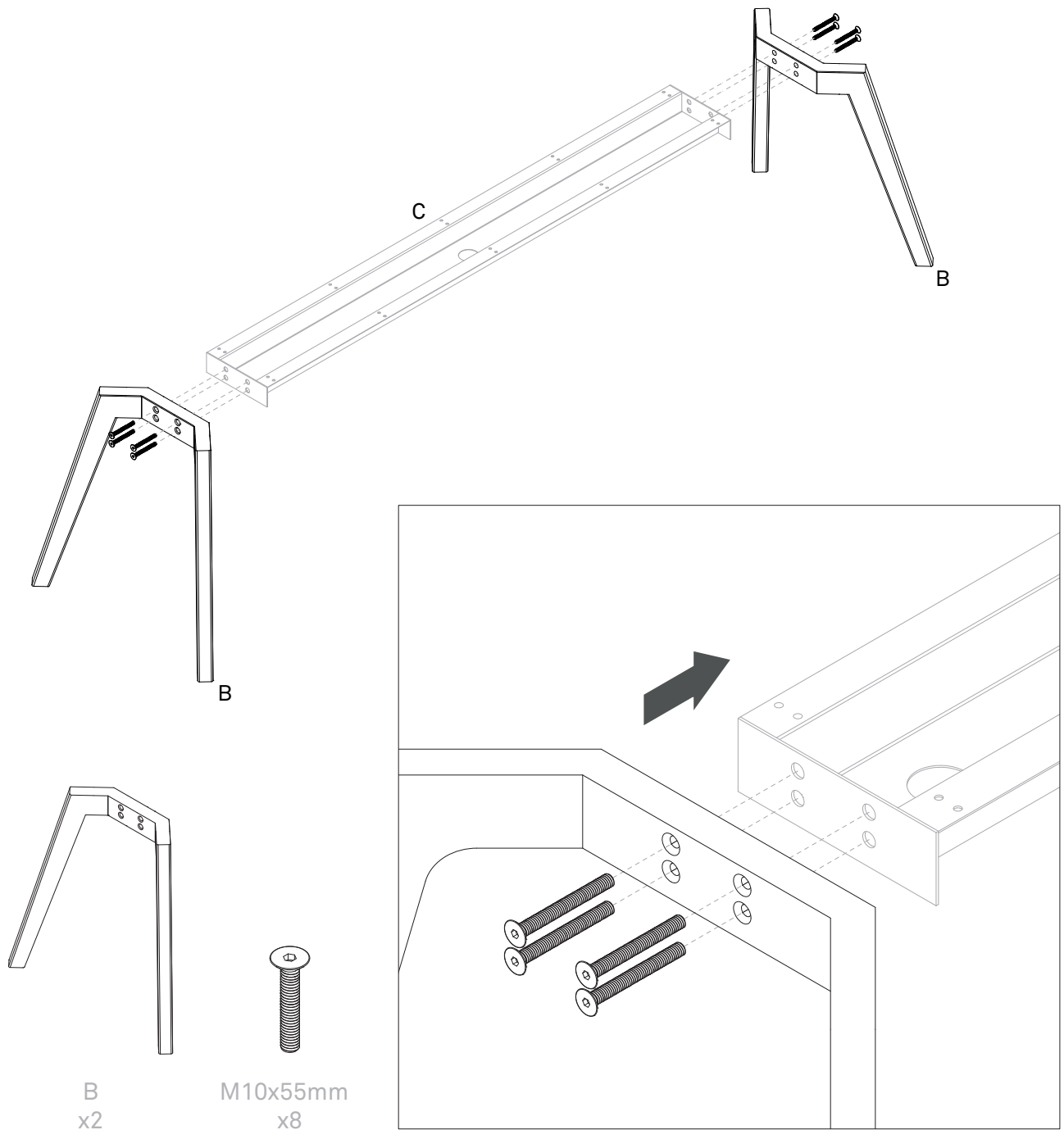


Step 1

Combine the two elements B to beam C through the 8 M10x50mm screws.

Unire i due elementi B alla trave C tramite le 8 viti M10x50mm.

Assemblez les deux éléments B à la poutre C avec les 8 vis M10x50mm.



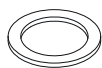
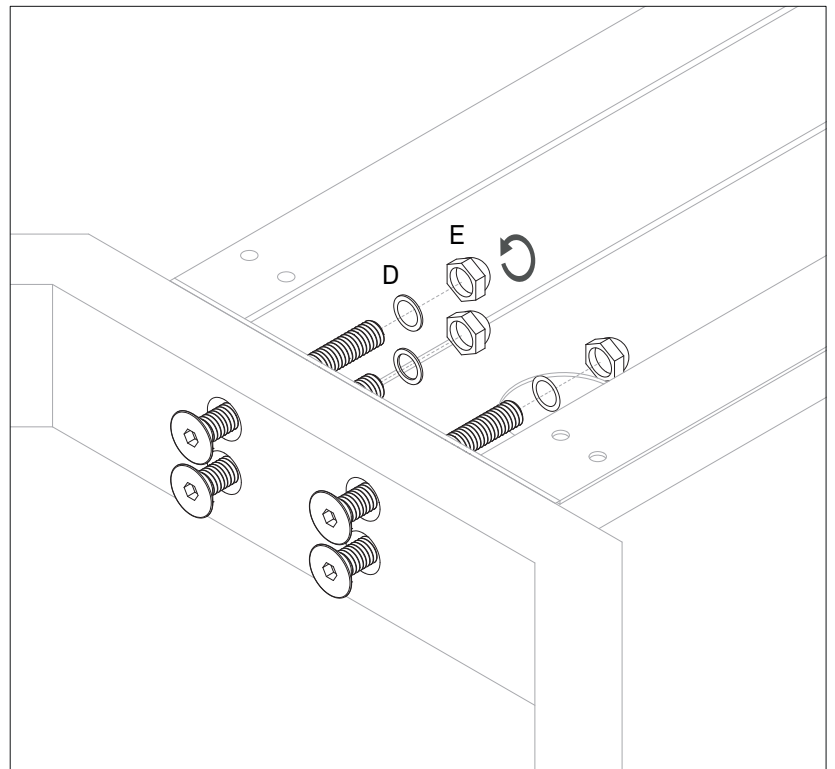
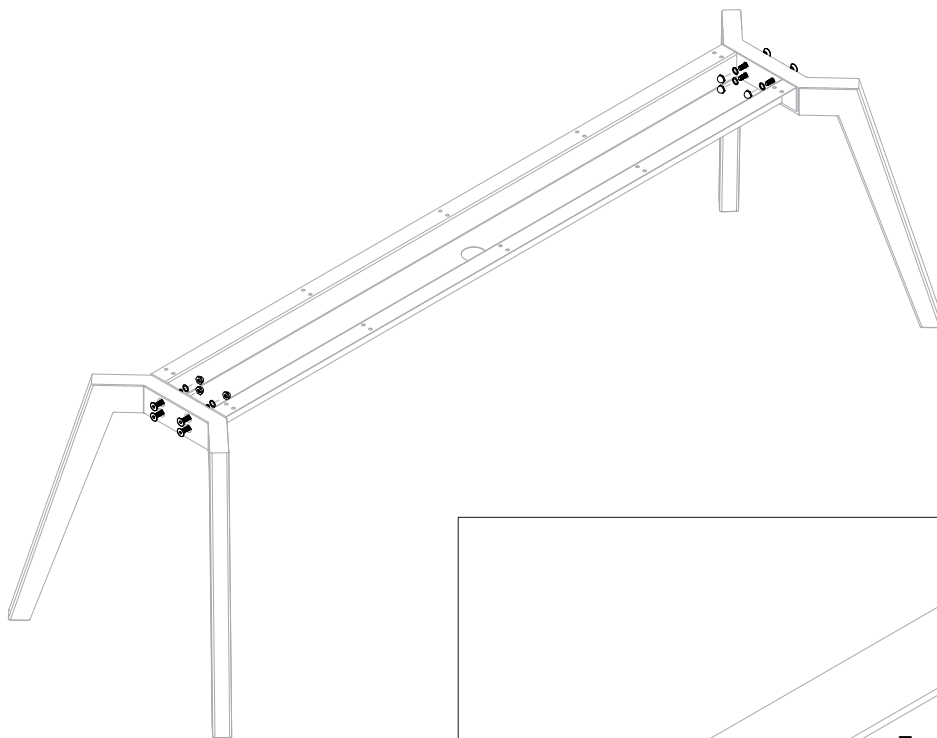
true

Step 2

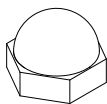
Insert for each M10x50 screw the "D" washer and fix each screw with "E" nut

Inserire a ogni vite M10x50mm la rondella D a disposizione e fissare ciascuna vite con il dado E.

Insérez la rondelle D fournie dans chaque vis M10x50mm et fixez chaque vis avec l'écrou E.



D
x8



E
x8

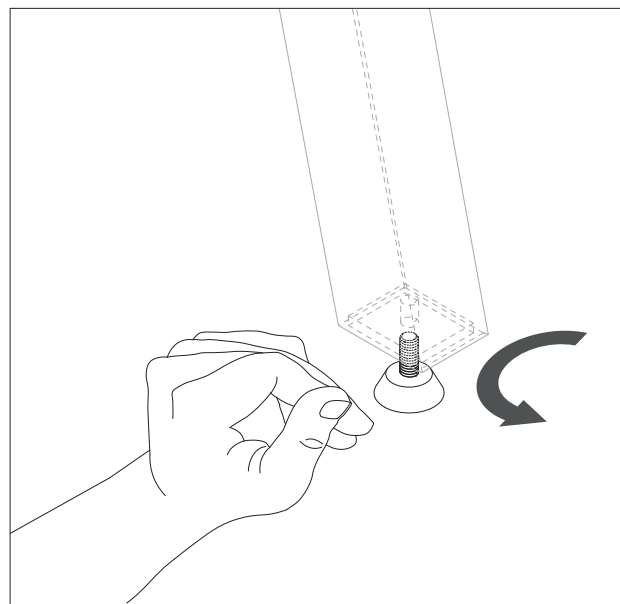
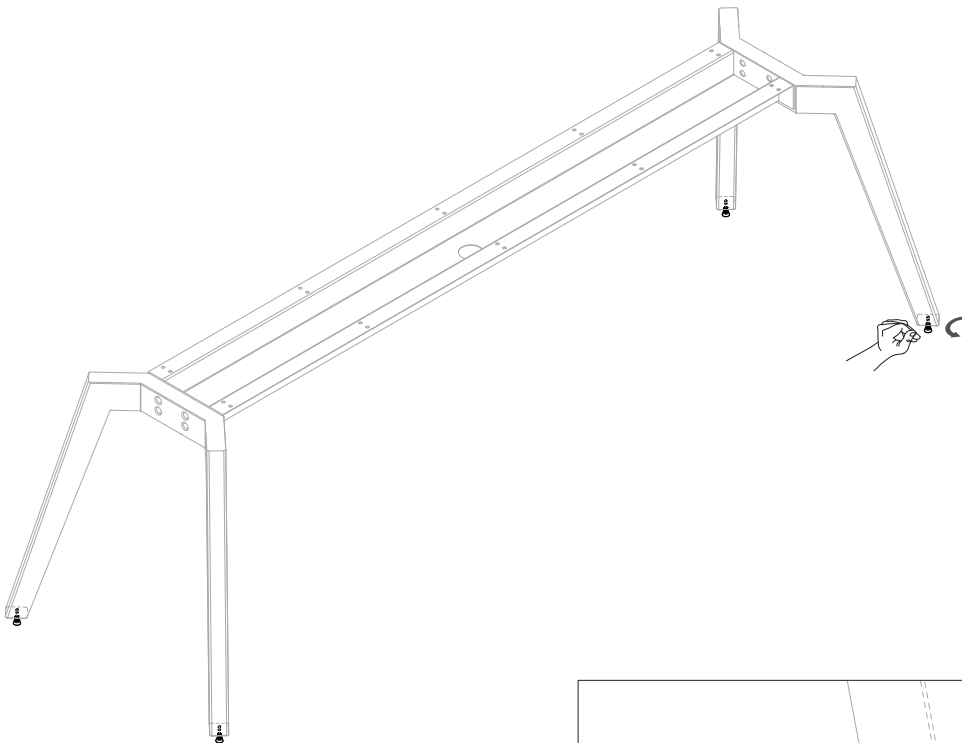
true

Step 3

Adjust the feet of each leg to the desired height to grant plan/top stability

Regolare i piedini di ciascuna gamba fino all'altezza desiderata che garantisca stabilità sul piano.

Régler les pieds de chaque jambe à la hauteur souhaitée pour assurer la stabilité sur la table.



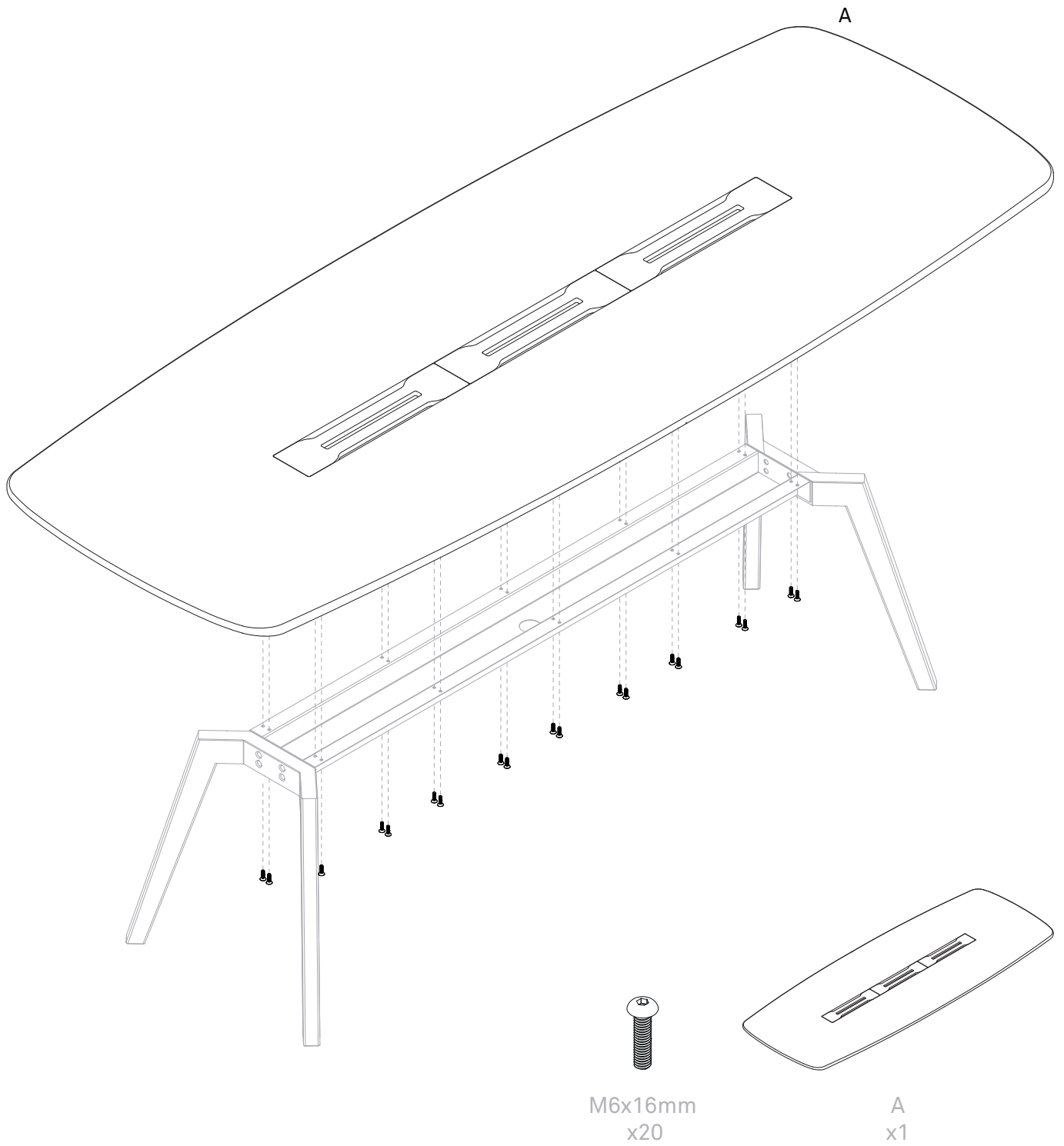
true

Step 4

Fix the "A" plan at the under frame by means of 20 screws M6 x 16mm.

Fissare il piano A alla struttura tramite le 20 viti M6x16mm.

Fixez le plateau à la structure avec les 20 vis M6x16mm.

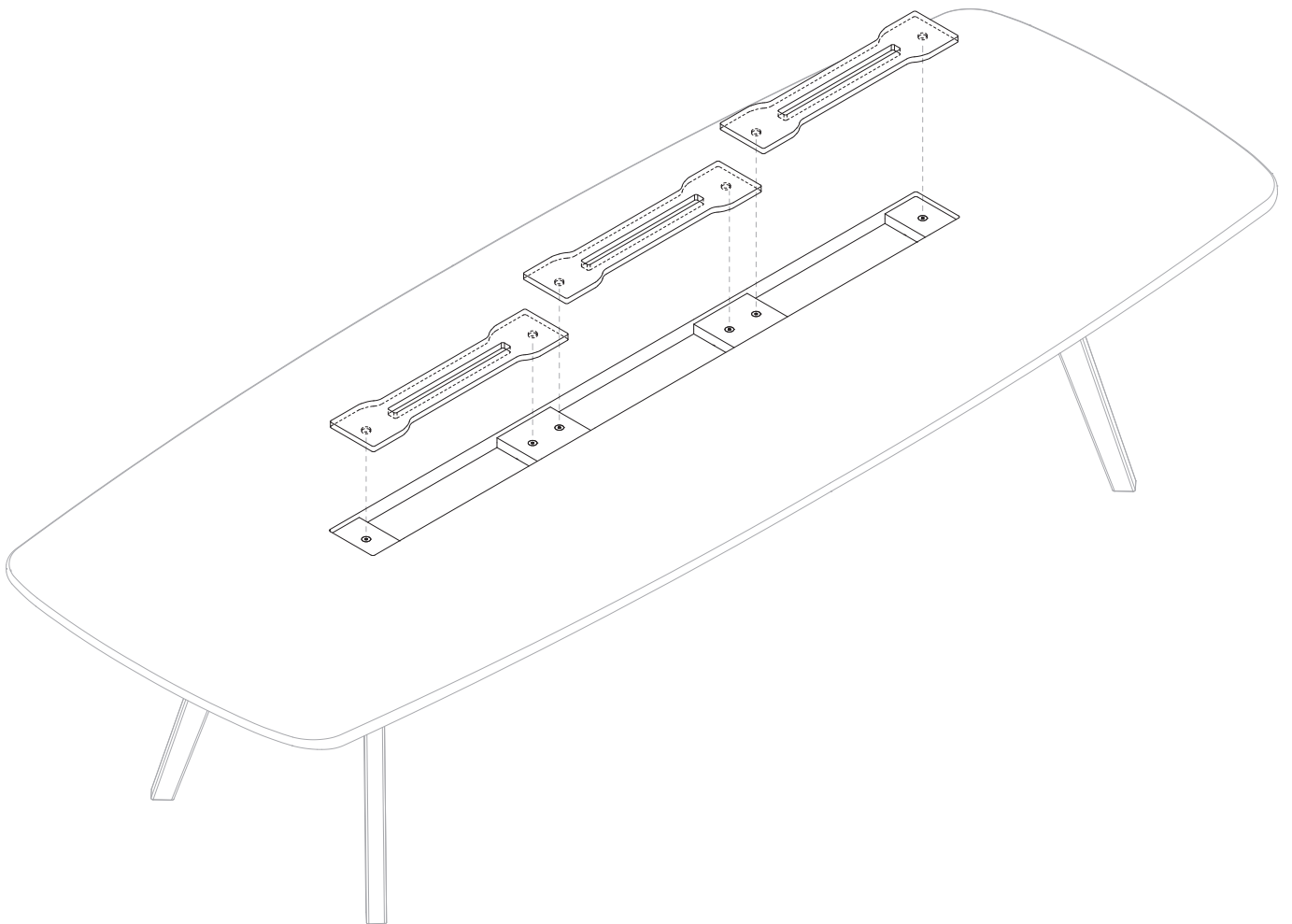


true

Step 5

Insert or remove the 3 top access to the central channel traverse by magnets system according to specific necessity

A seconda della necessità, inserire o rimuovere i tre top access, fissati nella cavità centrale del piano tramite calamite.
Selon les besoins, insérez ou retirez les trois accès supérieurs, qui sont fixés dans la cavité centrale du plateau par d'aimants.

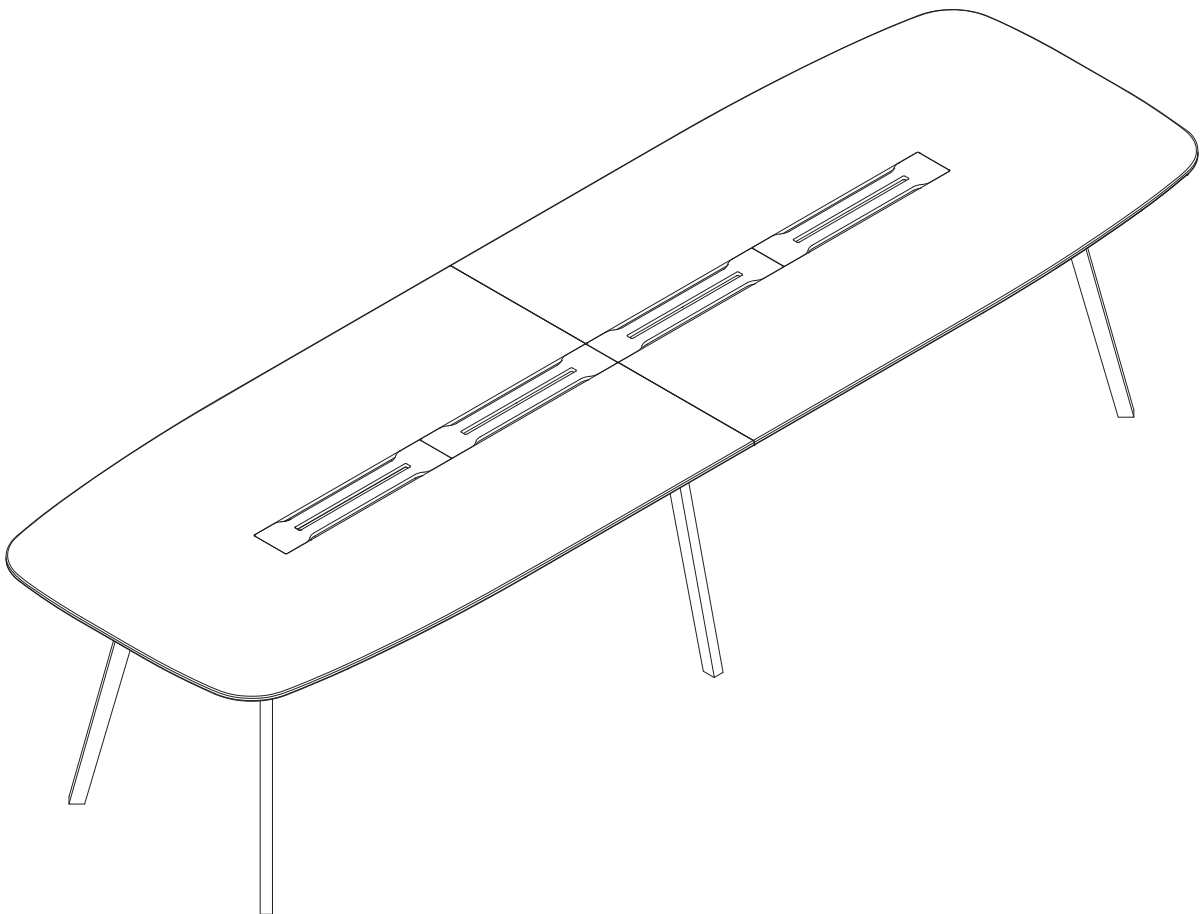


true

WING

splitted top assembly instructions

istruzioni montaggio piano in due metà
instructions de montage en deux moitiés

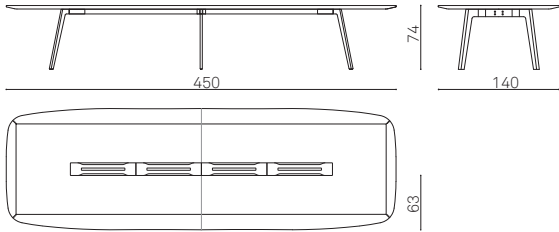


true

The installation procedure shown here refers to the following Wing products:

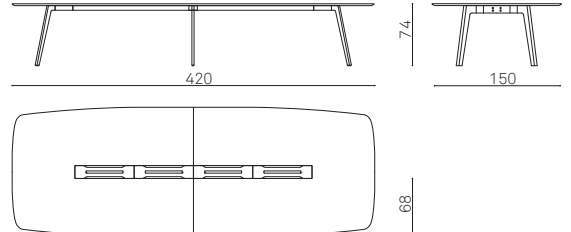
Il procedimento di installazione qui illustrato è riferito ai seguenti prodotti Wing:
La procédure d'installation présentée ici concerne les produits Wing suivants :

MEETING

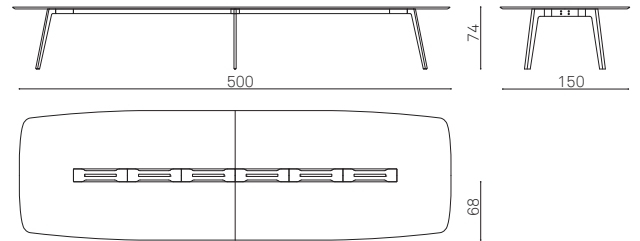


WI 450

WORKING TABLE

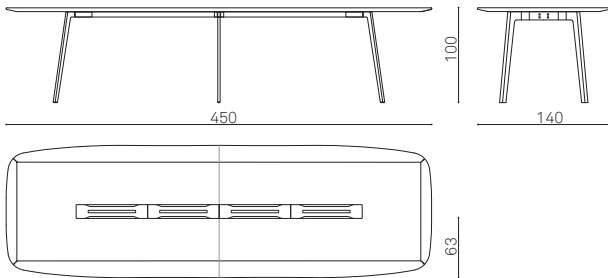


WI 420



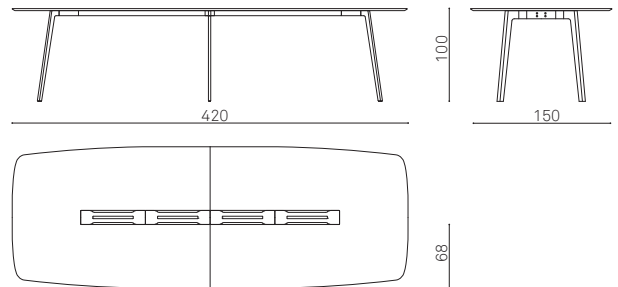
WI 500

HIGH MEETING

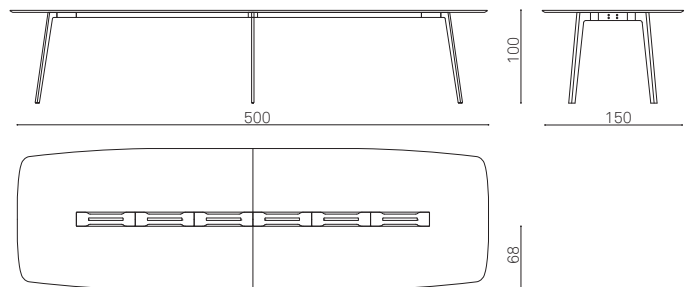


WI 450H

HIG WORKING TABLE



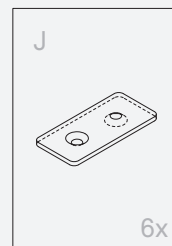
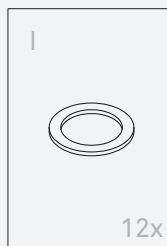
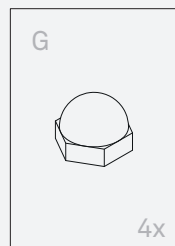
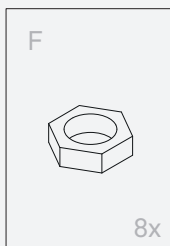
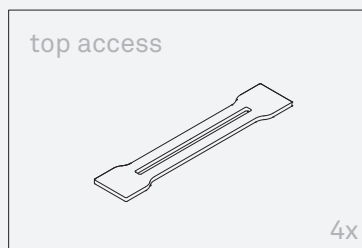
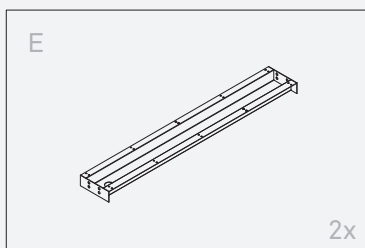
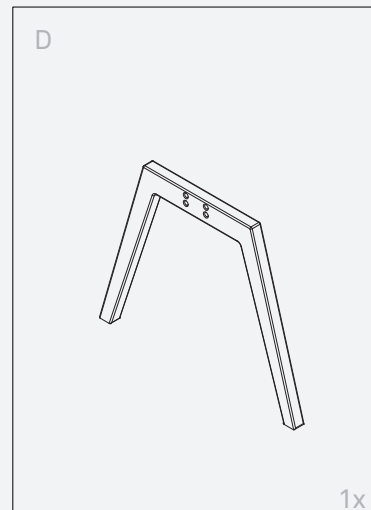
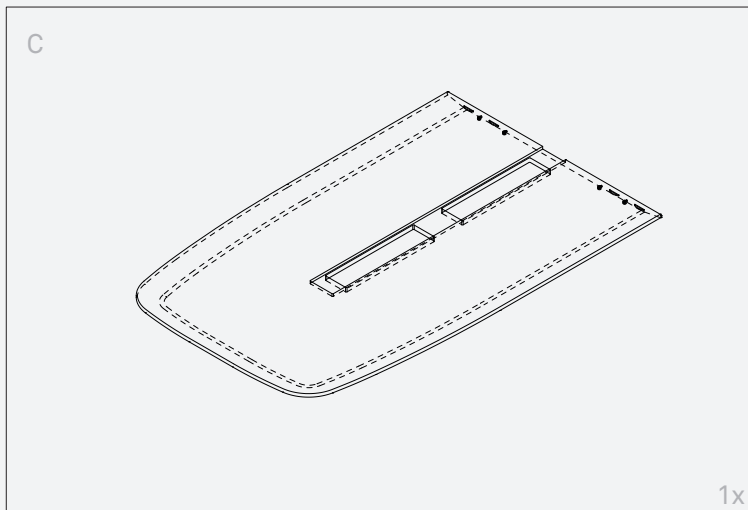
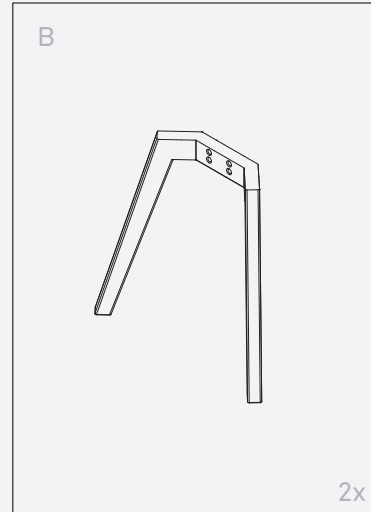
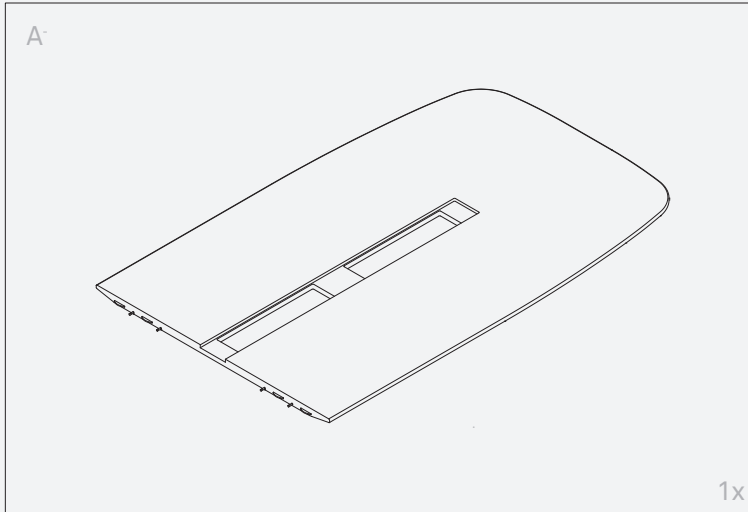
WI 420H

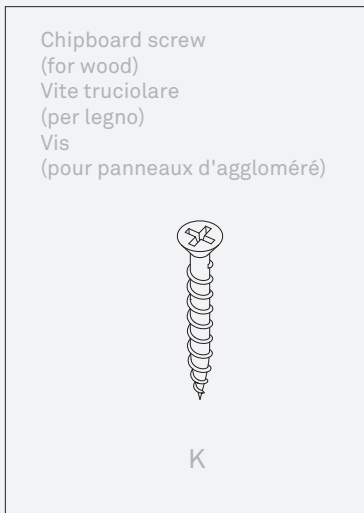
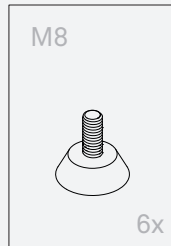
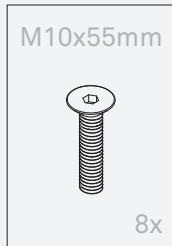
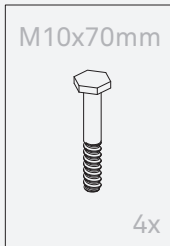


WI 500H

Components

Componenti | Éléments

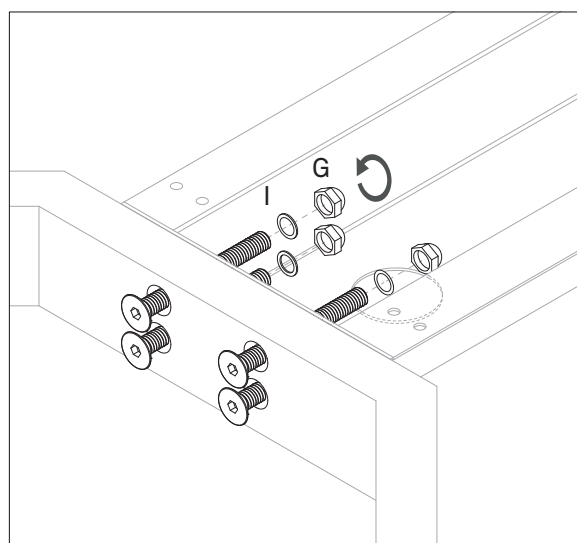
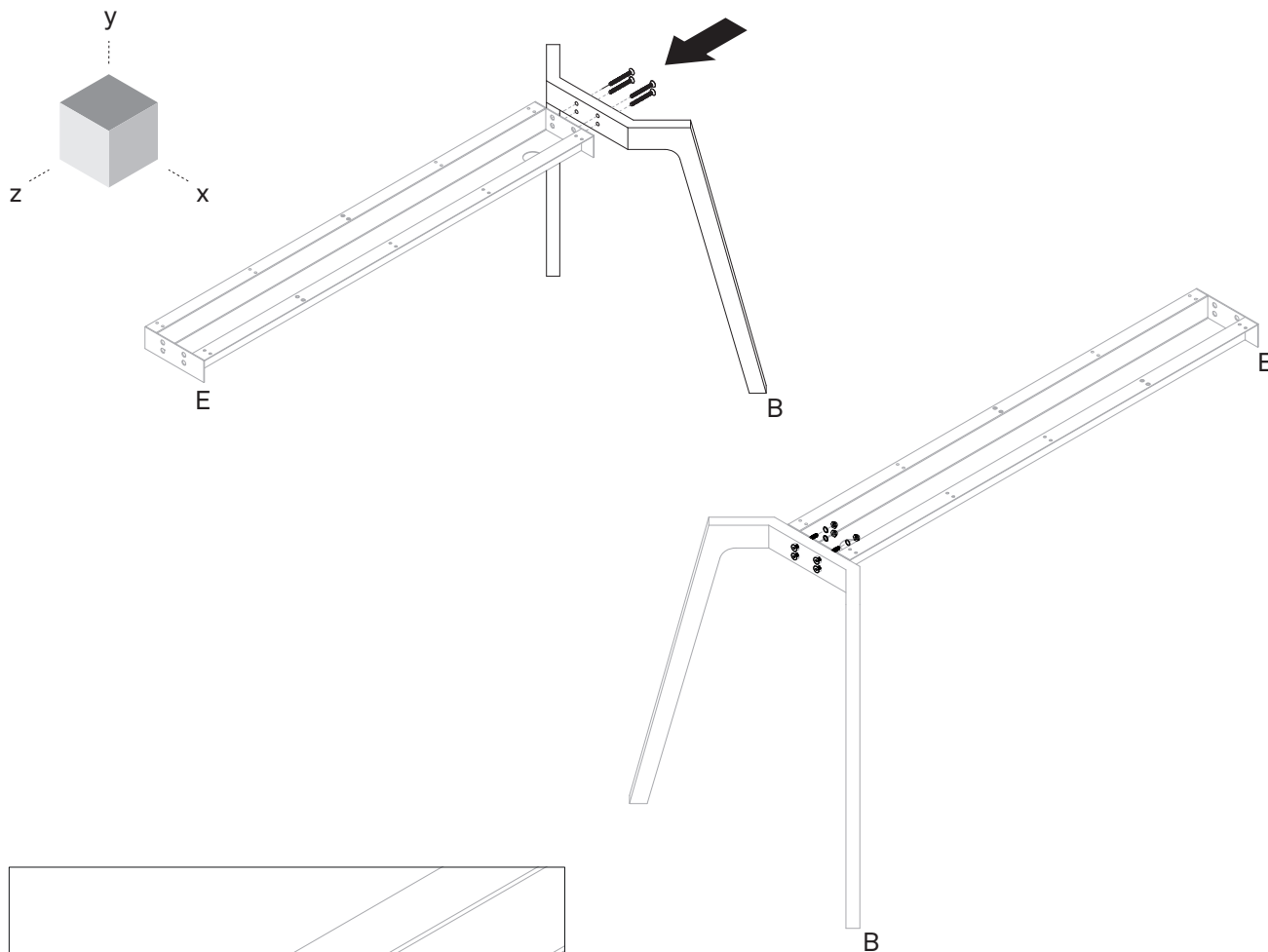




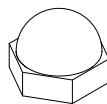
Step 1

Combine each leg B with beam E, each using the four M10x55mm screws and secure them with the washers I and the blind nuts G.

Unire ogni gamba B con la trave E, ciascuna tramite le quattro viti M10x55mm e fissarle ognuna con le rondelle I e i dadi ciechi G.
Assemblez chaque pied B avec la poutre E, chacune avec les quatre vis M10x55mm et fixez-les avec les rondelles I et les écrous aveugles G.



I
x8



G
x8



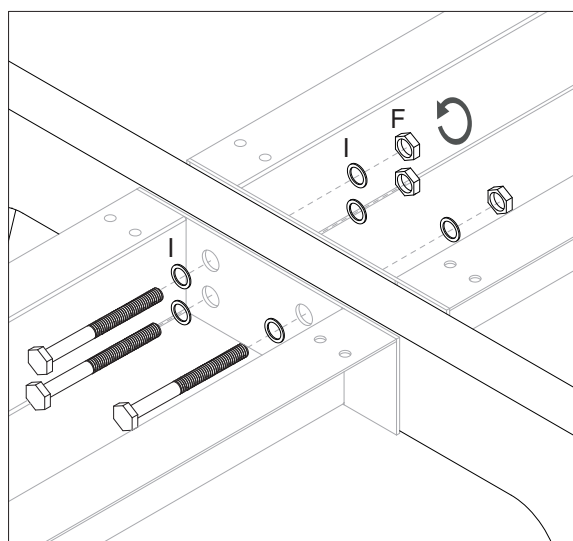
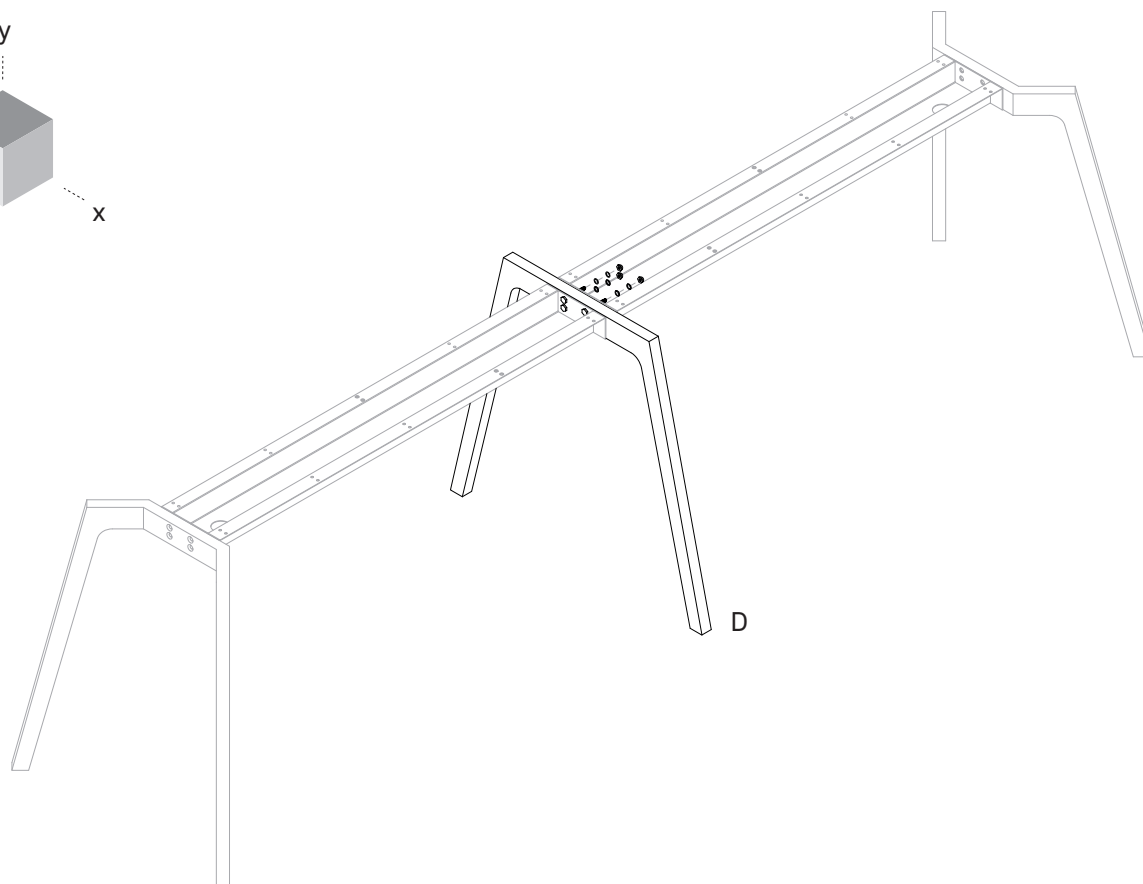
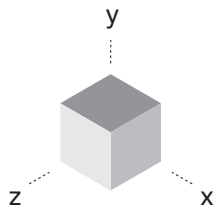
M10x55mm
x8

true

Step 2

Combine the two structures to leg D using the M10x70mm screws,
inserting two washers I for each, secured by a nut F.

Unire le due strutture alla gamba D tramite le viti M10x70mm, inserendo per ciascuna, due rondelle I, fissati da un dado F.
Assemblez les deux structures au pied D avec les vis M10x70mm,
en insérant deux rondelles I pour chacun d'eux, fixées par un écrou F.



F
x4



I
x8



M10x70mm
x4

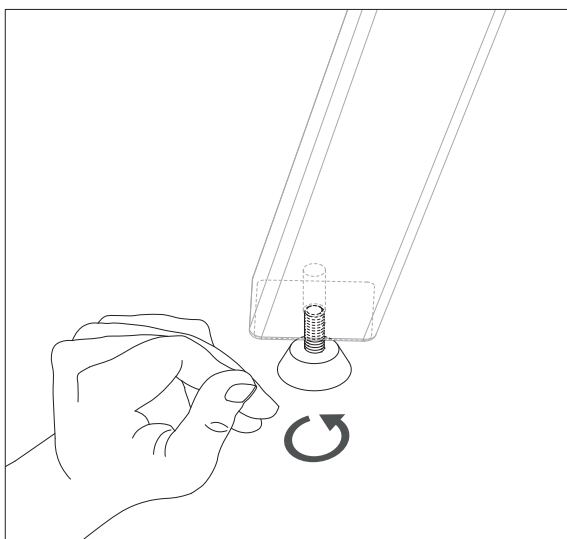
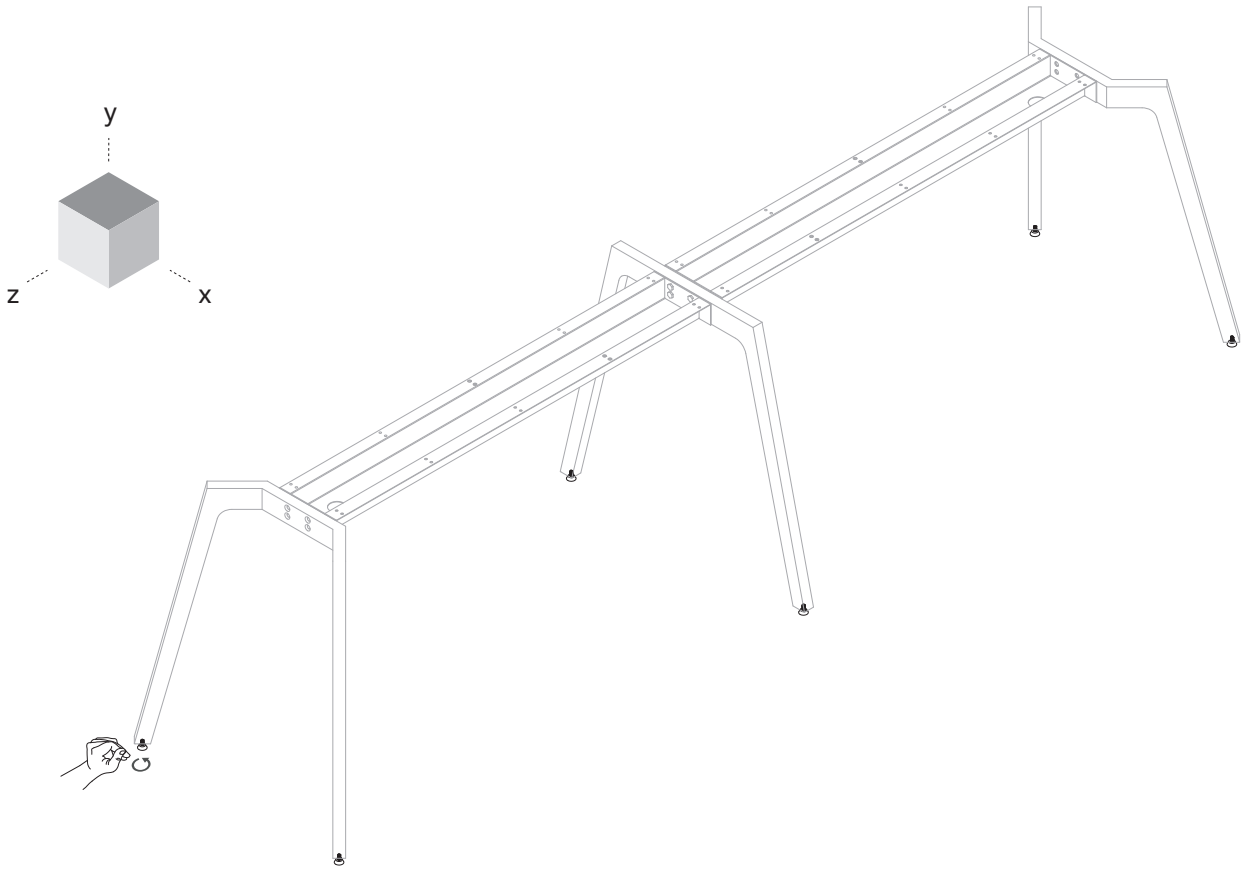
true

Step 3

If you have adjustable feet M8, screw them at the desired height to ensure stability on the floor.

Se si dispone dei piedini regolabili M8, avitarli fino all'altezza desiderata che garantisca stabilità sul piano.

Si vous avez des pieds réglables M8, vissez-les à la hauteur souhaitée qui assure stabilité sur le sol.



M8
x6

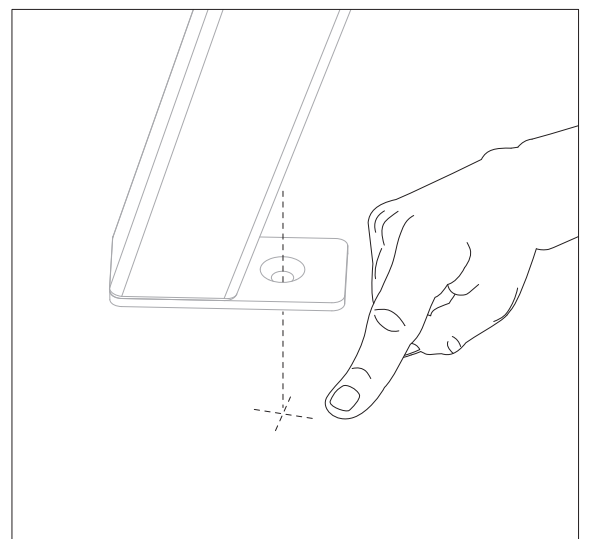
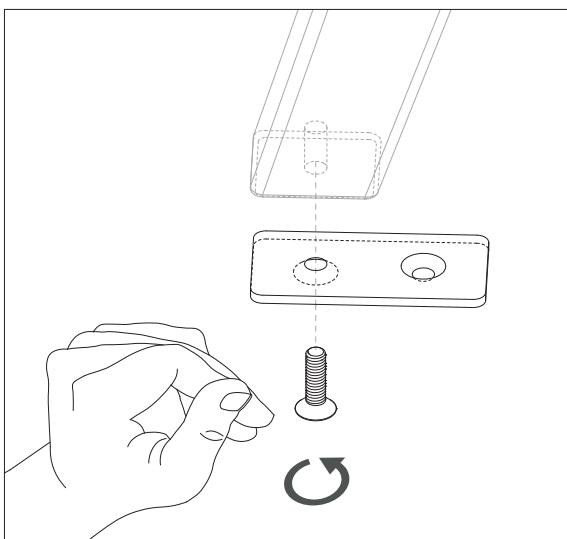
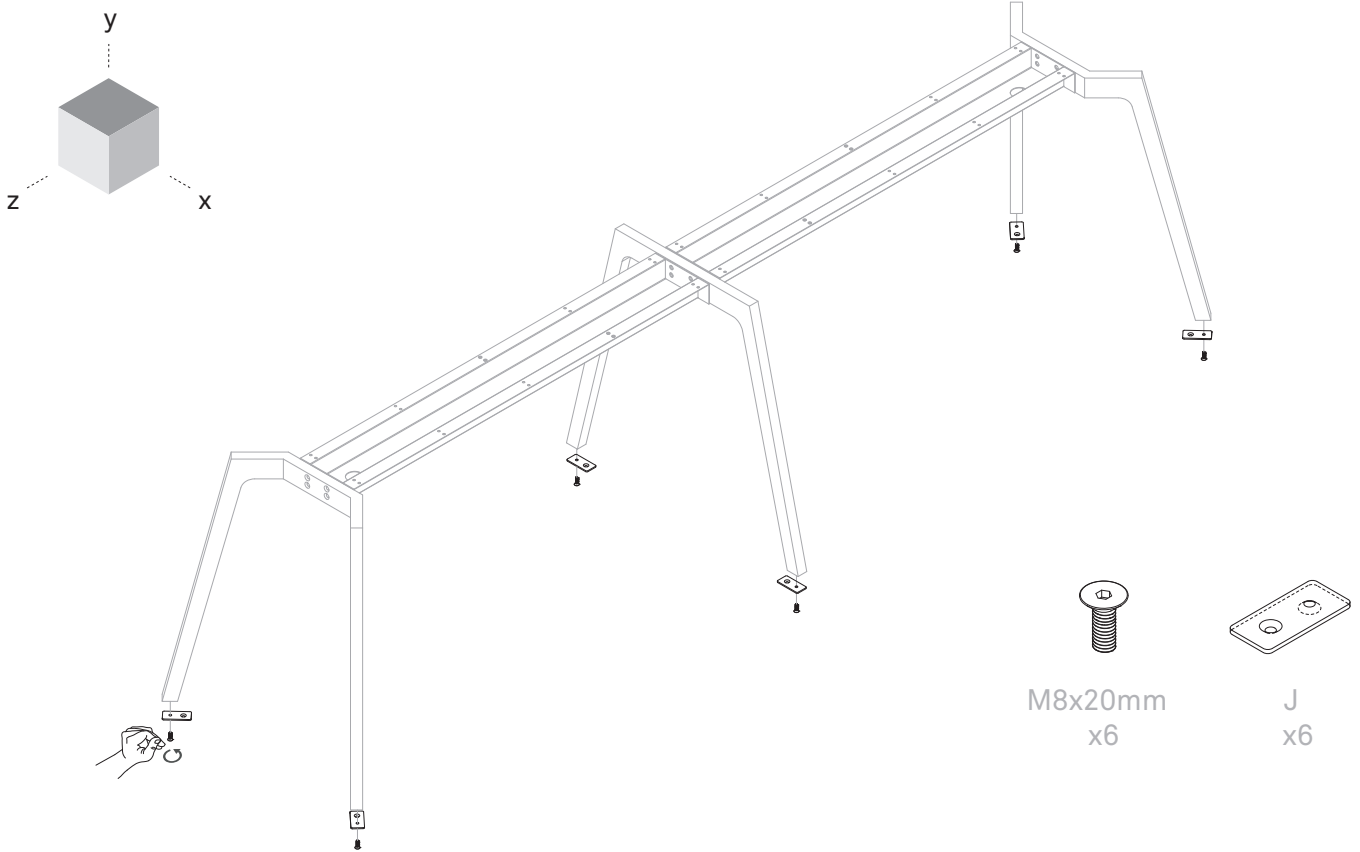
true

Step 4

If you have the floor mounting kit, secure the element J on each leg with the M8x20mm screw.
Then, mark the point where to drill on the floor, in correspondence with the free hole of element J.

Se si dispone del kit fissaggio a pavimento, fissare l'elemento J su ciascuna gamba con la vite M8x20mm.
Successivamente, segnare il punto dove forare nel pavimento, in corrispondenza del foro libero dell'elemento J.

Si vous avez le kit de fixation au sol, fixez l'élément J sur chaque pied avec la vis M8x20mm.
Ensuite, marquez le point où percer dans le sol, au niveau de l'endroit libre de l'élément J.



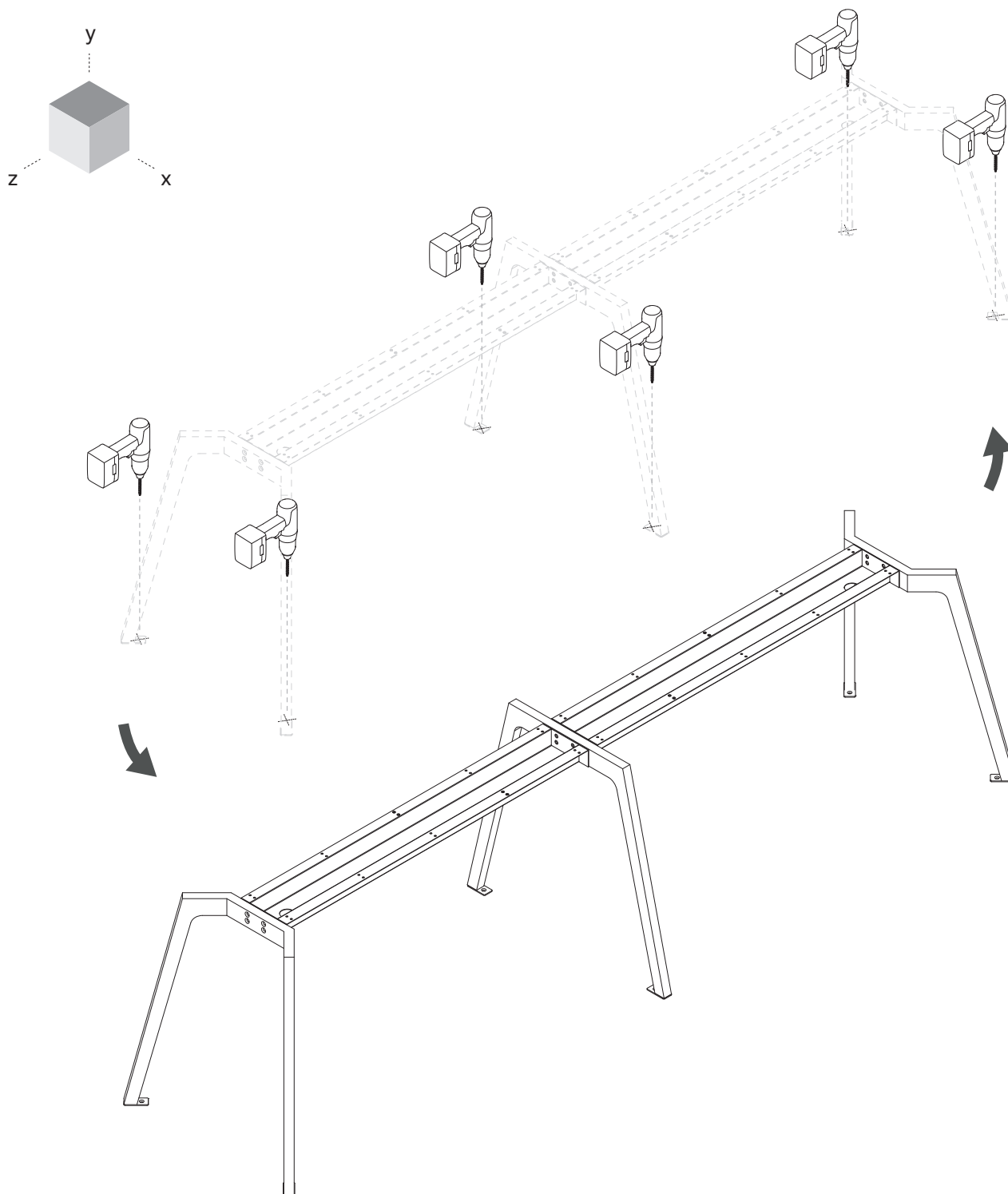
true

Step 5

Move the table and drill the floor on the previously marked points. At the end, replace the table making the holes of the floor coincide with the free holes of the elements J.

Spostare il tavolo e forare il pavimento nei punti contrassegnati in precedenza.
Al termine, riposizionare il tavolo facendo coincidere i fori del pavimento con i fori liberi degli elementi J.

Déplacez la table et percez le sol dans les points marqués précédemment.
À la fin, repositionnez la table en faisant coïncider les trous du sol avec les trous libres des éléments J.



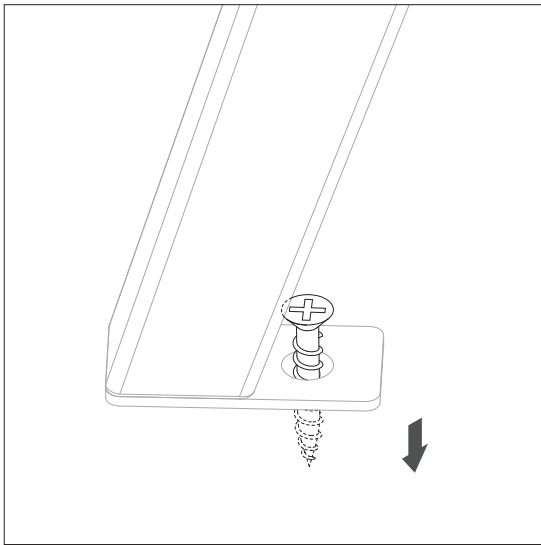
true

Step 6

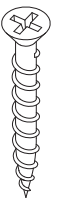
According to the type of the floor, to secure the feet, use the corresponding screws and dowels.

A seconda della tipologia del pavimento, per fissare i piedini, utilizzare le viti e i tasselli corrispondenti.

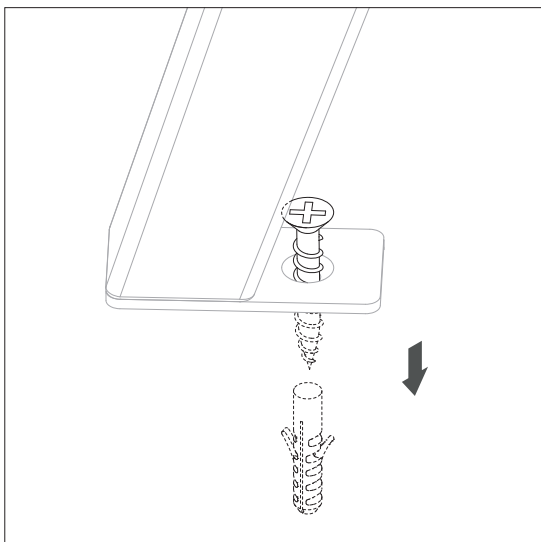
En fonction du type de sol, pour fixer les pieds, utilisez les vis et les chevilles correspondantes.



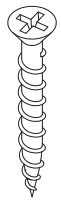
for wood
per legno
pour panneaux d'aggloméré



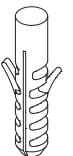
K



for concrete or tiles
per cemento o mattoni
pour le béton ou la brique



L

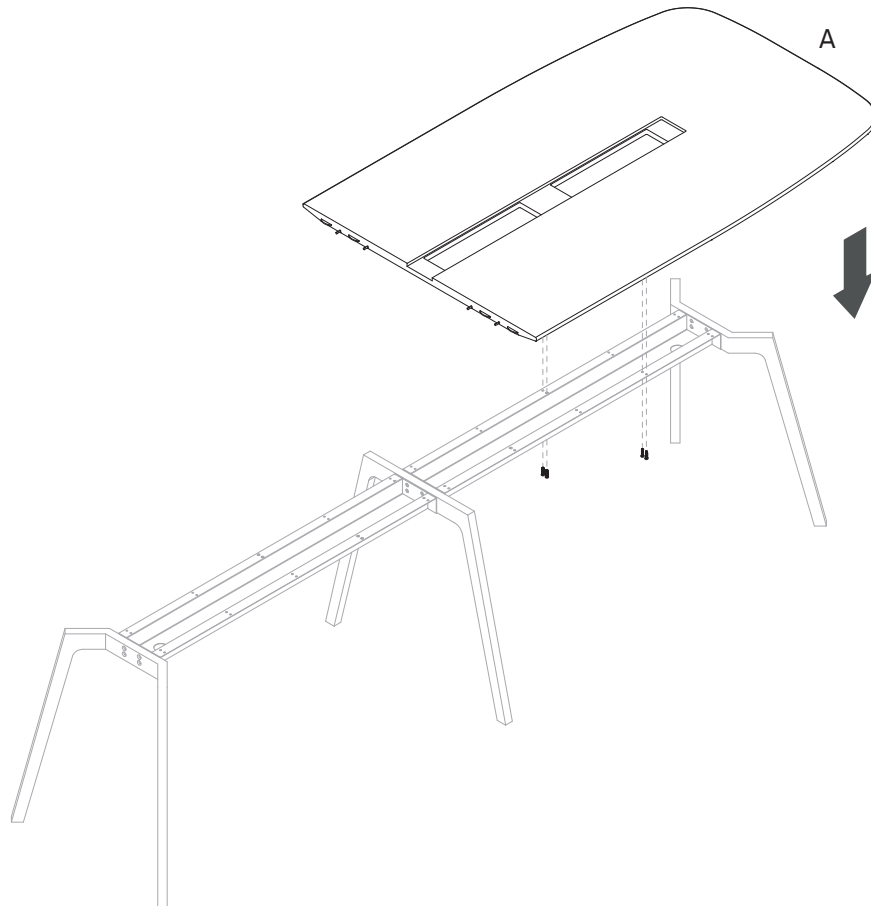
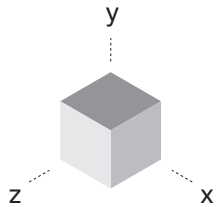


M

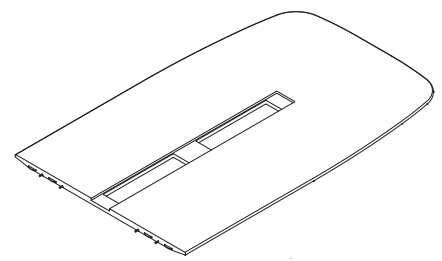
Step 7

Place shelf A on the structure and secure it with at least four M6x16mm screws to ensure stability.

Appoggiare il piano A alla struttura fissandolo con almeno quattro viti M6x16mm per garantirgli stabilità.
Placez le plateau A sur la structure et fixez-le avec au moins quatre vis M6x16mm pour assurer la stabilité.



M6x16mm
x4



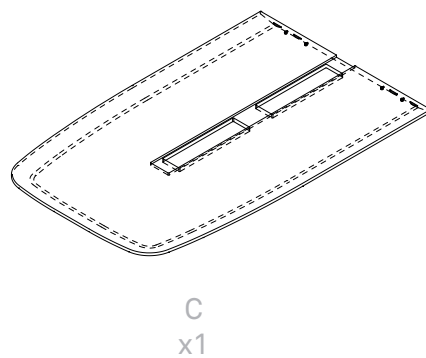
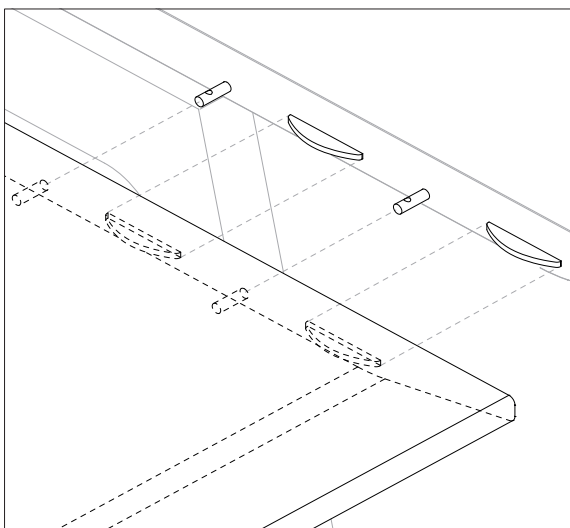
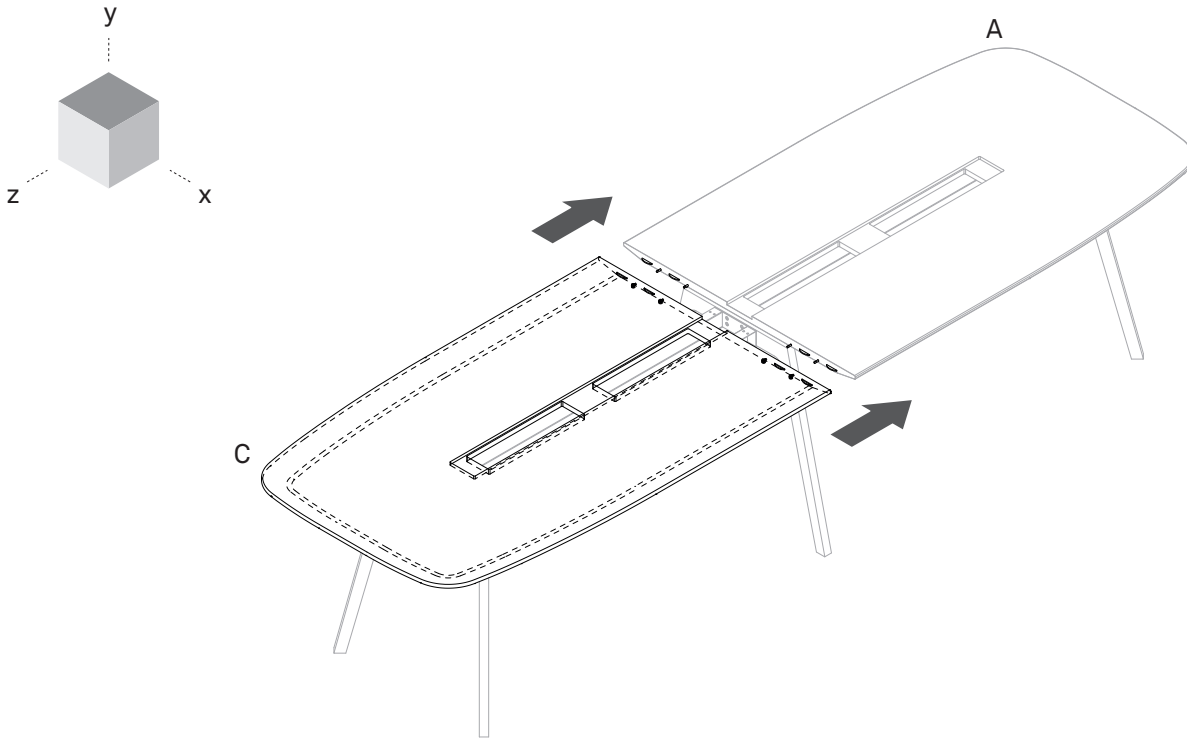
A
x1

true

Step 8

Place shelf C on the structure and fit it with shelf A in the corresponding holes and slots.

Appoggiare il piano C alla struttura e incastrarlo con il piano A inserendolo negli appositi fori e fessure corrispondenti.
Placez l'étagère C sur la structure et ajustez-la avec l'étagère A dans les trous et fentes correspondants.

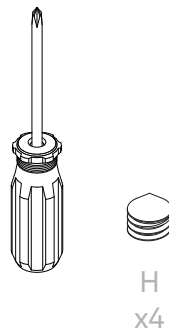
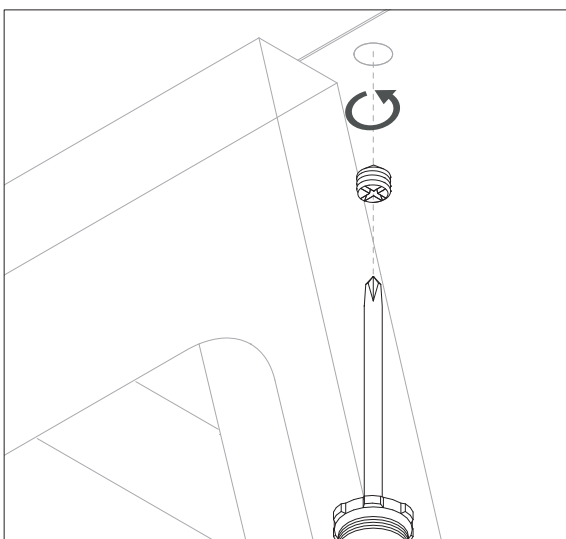
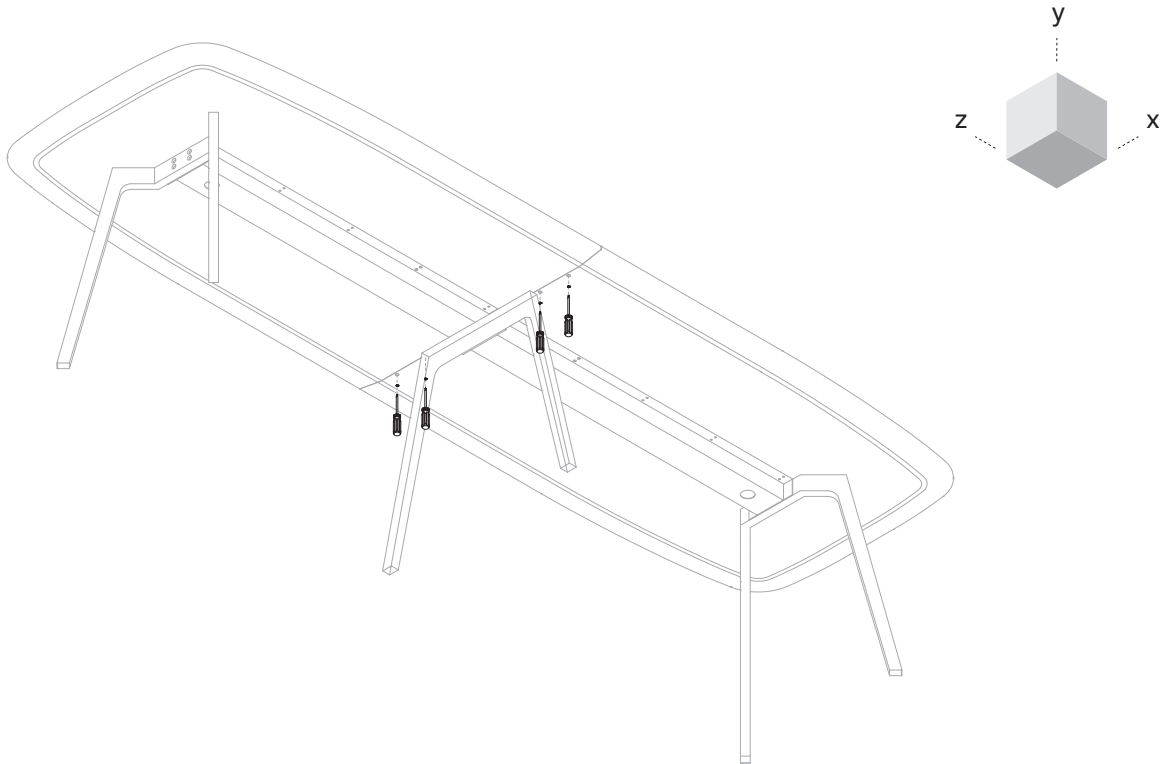


true

Step 9

To ensure stability to top A and C, use a Phillips head screwdriver to screw the 4 dowels H into the four holes located inside top C.

Per garantire stabilità ai due piani A e C, avvitare con un cacciavite a stella i 4 grani H nei quattro fori presenti all'interno del piano C.
Pour assurer la stabilité des deux plateaux A et C, utilisez un tournevis cruciforme pour visser les 4 chevilles H dans les quatre trous présents à l'intérieur du plateau C.

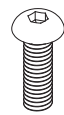
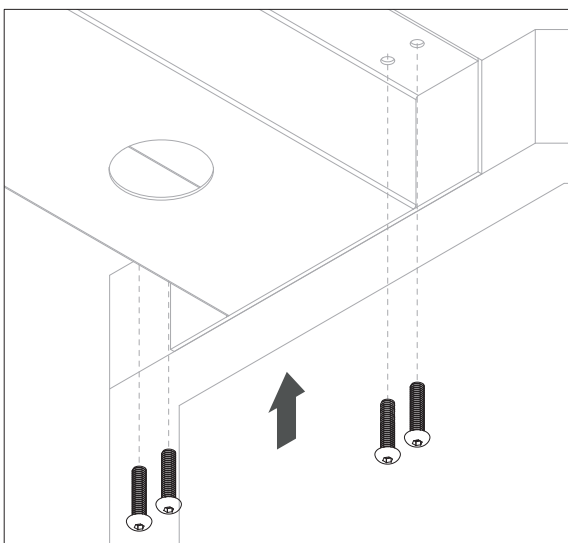
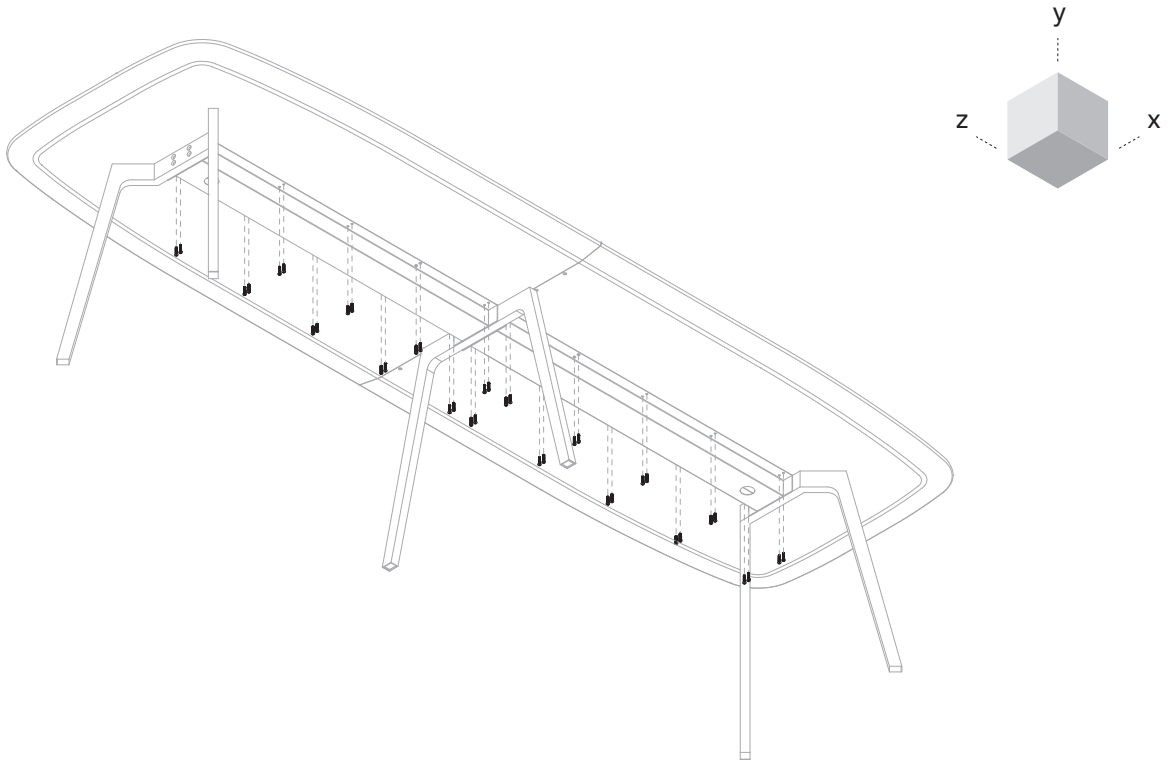


true

Step 10

Secure the two shelves A and C to the structure using the 36 M6x16mm screws.

Fissare i due piani A e C alla struttura tramite le 36 viti M6x16mm.
Fixez les deux étagères A et C à la structure avec les 36 vis M6x16mm.



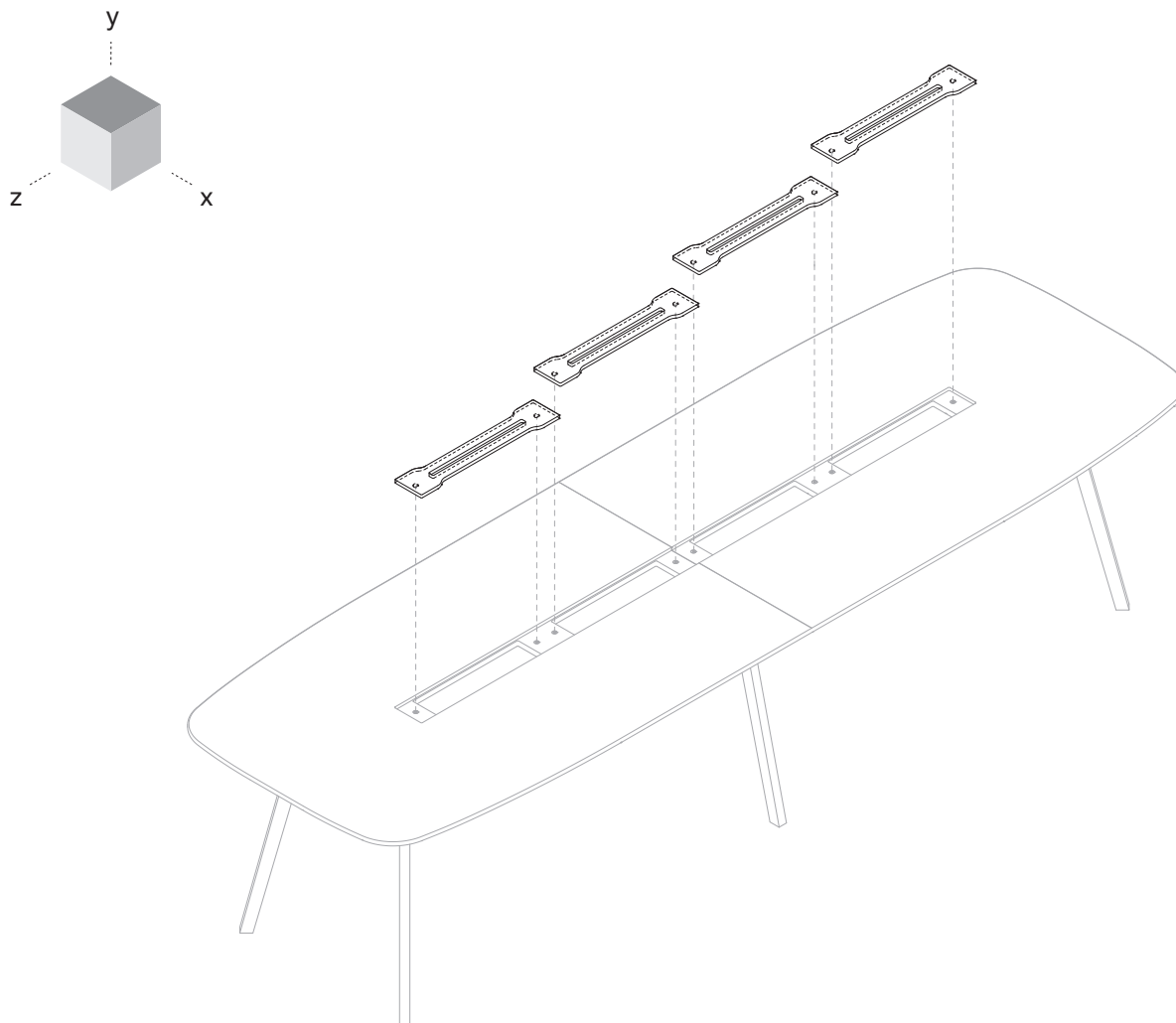
M6x16mm
x36

true

Step 11

Insert or remove the 4 top access to the central channel traverse by magnets system according to specific necessity.

A seconda della necessità, inserire o rimuovere i 4 top access, fissati nella cavità centrale del piano tramite calamite.
Selon les besoins, insérez ou retirez les 4 accès supérieurs, qui sont fixés dans la cavité centrale du plateau par d'aimants.



true

WING

Care and Maintenance

In order to keep the product in good condition for as long as possible, we recommend that you do not lean on the edges of the surfaces or use the table tops as seats. The table tops should not be used as a base to retrieve objects that are placed on top. We recommend to use two or more people to move the table to new positions, taking care not to drag it along the floor but to lift it from the ground. For daily cleaning, avoid abrasive sponges and always use a microfibre cloth soaked only in a neutral, non-abrasive detergent without additives. In the event of minor scratches, apply beeswax. To clean the steel legs, use a cloth soaked in warm water and neutral detergent and wipe thoroughly.

Cura e Manutenzione

Al fine di mantenere in buone condizioni il prodotto più a lungo possibile, sconsigliamo di appoggiarsi sui bordi delle superfici e di non utilizzare i piani dei tavoli come sedute. Gli stessi piani poi non vanno impiegati come base d'appoggio per recuperare oggetti situati in alto. Raccomandiamo di servirsi di due o più persone per ricollocare il tavolo in nuove posizioni, avendo cura di non trascinare lungo il pavimento bensì di sollevarlo da terra. Per la pulizia quotidiana, evitare spugne abrasive e utilizzare sempre un panno in microfibra imbevuto esclusivamente con un detergente neutro, non abrasivo e senza additivi. In caso di graffi lievi, applicarvi la cera d'api. Per pulire le gambe in acciaio, servirsi di un panno bagnato con acqua calda e detergente neutro, strofinando a fondo.

Entretien et Maintenance

Afin de conserver le produit en bon état le plus longtemps possible, nous vous recommandons de ne pas vous appuyer sur les bords des surfaces ni d'utiliser les plateaux de la table comme sièges. Les plateaux de la table ne doivent pas être utilisés comme base pour récupérer des objets qui sont placés au-dessus. Nous recommandons d'utiliser deux personnes ou plus pour déplacer la table vers de nouvelles positions, en prenant soin de ne pas la traîner sur le sol mais de la soulever du sol. Pour le nettoyage quotidien, évitez les éponges abrasives et utilisez toujours un chiffon en microfibre imbibé uniquement d'un détergent neutre, non abrasif et sans additifs. En cas de petites rayures, appliquez de la cire d'abeille. Pour nettoyer les pieds en acier, utilisez un chiffon imbibé d'eau chaude et de détergent neutre en frottant en profondeur.

Inspire. Create. Deliver.